

Snap-on INDUSTRIAL BRANDS

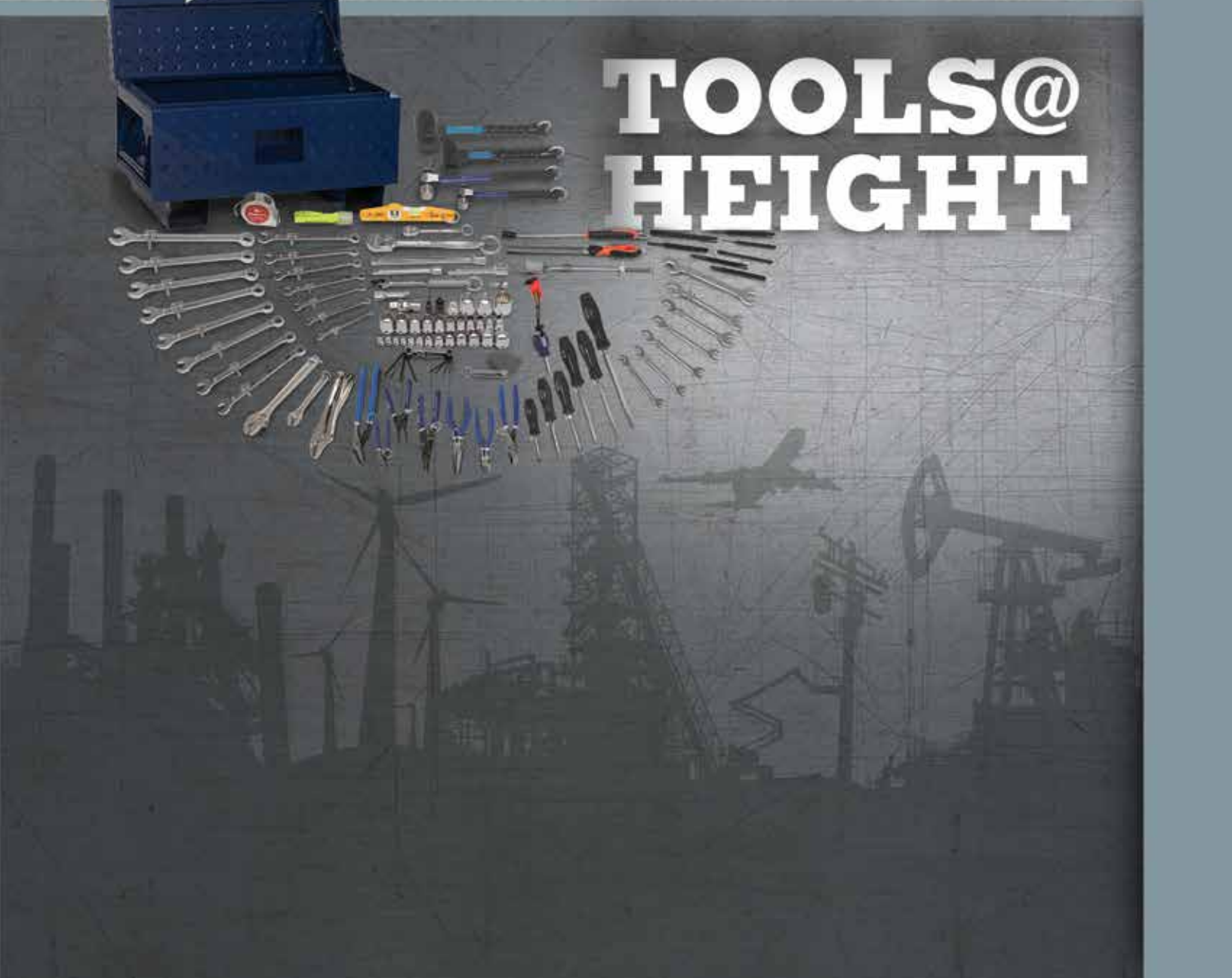
WILLIAMS®



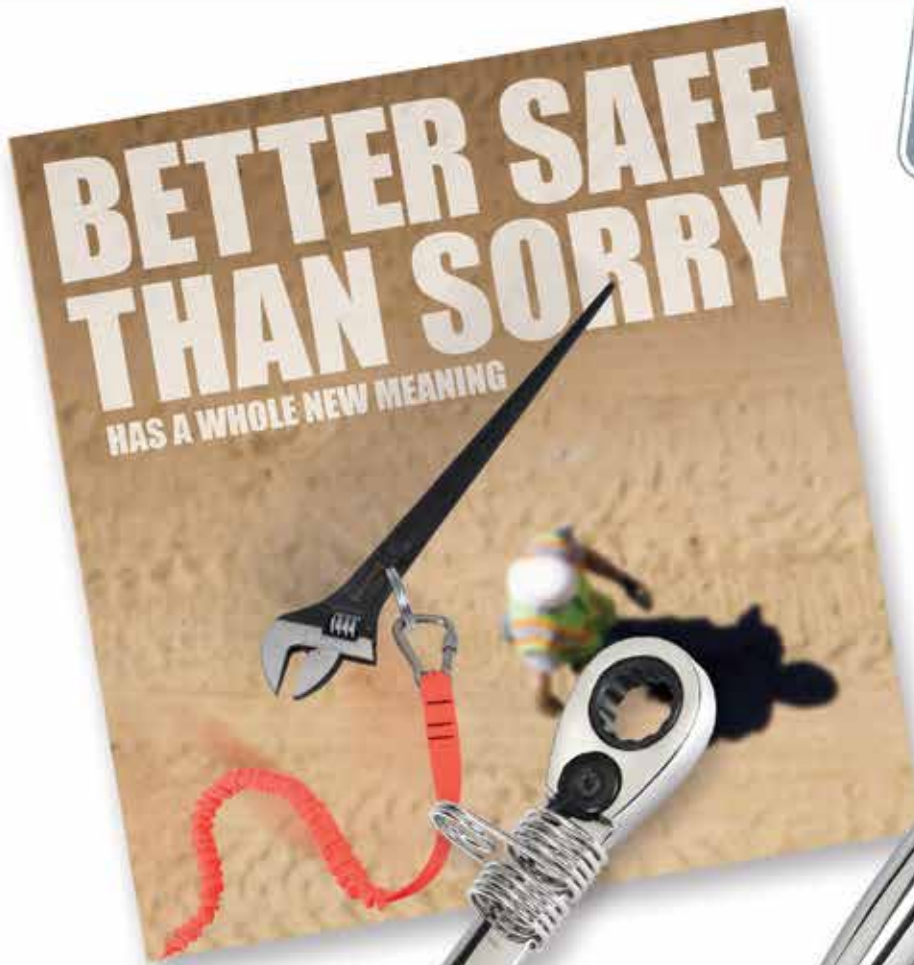
CDI TORQUE
PRODUCTS®



TOOLS@ HEIGHT



TOOLS@HEIGHT



REVERSIBLE RATCHETING
COMBINATION WRENCHES P.20



1/2" DRIVE ENCLOSED
HEAD RATCHET P.32



SLOTTED SCREWDRIVERS P.38

**WE CONTINUE TO INNOVATE TO DELIVER SAFETY
AND PRODUCTIVITY TO OUR CUSTOMERS**

QUICK REFERENCE

Snap-on INDUSTRIAL BRANDS



MASTER SETS	PAGES 6-9
LANYARDS/ANCHOR STRAPS	PAGES 10-11
COIL TETHERS/RETRACTABLE TETHERS	PAGE 12
WRISTBANDS	PAGE 13
HOLSTERS/POUCHES	PAGES 14-15
TOOL BELTS/BELT LOOPS/SAFE BUCKLES	PAGES 16-17
WRENCHES	PAGES 18-25
T-HANDLE HEX DRIVERS	PAGE 25
SLUGGING WRENCH RETAINERS	PAGE 26
HEX KEYS SETS/TORQUE WRENCH	PAGE 26
SOCKETS & DRIVE TOOLS	PAGES 27-37
SCREWDRIVERS & NUT DRIVERS	PAGES 38-39
PLIERS/WIRE TOOLS/CABLE CUTTER	PAGES 40-43
C-CLAMPS/PIPE WRENCHES	PAGE 44
HAMMERS/PUNCHES/CHISEL	PAGES 45-48
HANDSAW/HACKSAWS	PAGES 48-49
FILES/MISCELLANEOUS TOOLS	PAGES 50-52
UNIVERSAL ATTACHMENT POINTS	PAGES 53-54



ENGINEERED. TESTED. CERTIFIED.

DROPPED TOOLS CAN CREATE SIGNIFICANT HUMAN AND ASSET DAMAGE

- In 2012, people being struck by objects replaced people falling as the 3rd leading cause of death in the workplace.¹
- A 3lb object falling 200ft carries more than 1,000lbs of force per square inch on impact.
- It is very common for falling objects to deflect and travel significant distances from their original path.

¹ Bureau of Labor Statistics

KEEP YOUR PEOPLE SAFE AND ASSETS SECURE WITH SNAP-ON INDUSTRIAL BRANDS TOOLS@HEIGHT PROGRAM

SNAP-ON INDUSTRIAL BRANDS TOOLS@HEIGHT PROGRAM OFFERS UNIQUE ADVANTAGES

ENGINEERED, TESTED and CERTIFIED SYSTEM to maintain or enhance functionality of tools when used at height

- 4 side lock holes
- Safety coils
- Screwdriver tabs
- Pipe wrenches
- Differentiated proposition; engineered attachment points + tool transportation products
- With over 1,000 products, the industry's most comprehensive drop prevention system
- Turnkey provider of customized solutions
- Worldwide sales and service
- Stocked selection to ensure fast delivery
- Same warranty as standard tools



Be sure to use a lanyard that has more weight capacity than the tool you are attaching because drop forces are greater than actual tool weight.



Wrench with safety coil – Secure lanyard attachments need to withstand tough site use, including low temperature, so structural integrity is critical

- Superior design - no welds to fail
- High performance - made from polished stainless steel, they have superior flexibility and shock-absorbing qualities over welded attachments
- Seven sizes available to support wrenches up to 1½” or 55mm
- Slides out of the way along the wrenches handle to provide full use of the handle and achieve greatest leverage

Rotating screwdriver tabs – Tab is located for secure retention and allow full use of the screwdriver handle

- Stainless steel tab is corrosion resistant
- Tab rotates freely 360° so the lanyard does not wrap around the users hand
- Nylon bushing has a shoulder so the tab will not bind between the handle and shank bolster



Pipe wrenches – We pin the tang of the removable pipe wrench jaw so it cannot become separated from the handle

Square drive tools and accessories – Square drive tools are designed and manufactured with spring loaded lock buttons. The lock button engages with side lock holes drilled in sockets, extensions, and adaptors ensuring positive retention.

1 Hole
Competitor's socket

4 Holes
Williams' socket

Williams T@H sockets, extensions, and adaptors feature a locking hole on all four sides, not just one. Williams T@H ratchets and drive tools feature a locking pin which mates with the side lock hole for positive retention. This reduces the risk of misaligning the socket that typical competitor's sockets with just one side hole create.

Release pin with WTHPRT – Pin Release Tool for William's Square Drive Tools

Do not use quick release tools with locking collars or push button release. These tools can be disengaged inadvertently.

WTHPRT





409 PIECE TOOLS@HEIGHT MASTER MAINTENANCE TOOL SET

Contains the following tools:

Product Category	Number of Pieces	Product Category	Number of Pieces
Adjustable & Miscellaneous Wrenches	17	Miscellaneous Tools	15
Combination, Box, & Open End Wrenches	71	Pliers	15
Hammers	12	Pry Bars, Punches & Chisels	24
Hand Sockets, Ratchets, & Accessories	155	Screwdrivers & Nut drivers	17
Hex Keys & Sockets	24	Tool Storage	2
Impact Sockets & Accessories	35	Tools@Height Tethers, Lanyards, & Specialities	22

Note: Complete set contents are listed in Appendix A

Set Configurations Available

Product Code	Description
WSC-409-THTB	Complete Tools@Height Master Maintenance Tool Set With Tool Boxes (409 Pieces Total)
WSC-409-TH	Complete Tools@Height Master Maintenance Tool Set Only (407 Pieces Total)

Tool Boxes Included

Product Code	Description
W40TC4	40" Wide x 20" Deep 4 Drawer Top Chest
W40RC7	40" Wide x 20" Deep 7 Drawer Tool Cabinet

Features

- The Tools@Height Master Maintenance set provides a great assortment of tools for all types of maintenance applications. All tools are designed to be used with our tethering and retention systems which maintain or enhance the tools' functionality when used at height or near critical assemblies. Productivity and safety right out of the box.
- Many applications - any industry where a dropped tool could harm personnel, damage machinery or cost production time.
 - High level uses - drilling derricks, wind turbines, cranes, buildings, bridges, masts, powerlines, hangars, scaffold builders
 - Low level uses - stop tools dropping onto flight hardware, into engines, machinery, food production lines, vats, mine shafts, even under water uses
- Set is available with foamed tool control drawers on a special order basis

Tools@Height sets contain an assortment of pouches and lanyards designed for use with a suitable belt such as the Comfort and Utility belts on page 122.



W40TC4

W40RC7



WSC-409-TH



Be sure to use a lanyard that has more weight capacity than the tool you are attaching because drop forces are greater than actual tool weight.



225 PIECE TOOLS@HEIGHT INTERMEDIATE MAINTENANCE SERVICE SET

Contains the following tools:

Product Category	Number of Pieces	Product Category	Number of Pieces
Adjustable & Miscellaneous Wrenches	4	Miscellaneous Tools	14
Combination, Box, & Open End Wrenches	45	Pliers	10
Hammers	7	Pry Bars, Punches & Chisels	13
Hand Sockets, Ratchets, & Accessories	90	Screwdrivers & Nut drivers	8
Hex Keys & Sockets	9	Tool Storage	2
Impact Sockets & Accessories	1	Tools@Height Tethers, Lanyards, & Specialties	22

Note: Complete set contents are listed in Appendix A Set Configurations Available

Product Code	Description
WSC-225-THTB	Complete Tools@Height Intermediate Tool Set With Tool Boxes (225 Pieces Total)
WSC-225-TH	Complete Tools@Height Intermediate Tool Set Only (223 Pieces Total)

Tool Boxes Included

Product Code	Description
W26TC4	26" Wide x 20" Deep 4 Drawer Top Chest
W26RC7	26" Wide x 20" Deep 7 Drawer Tool Cabinet

Features

- The Tools@Height Intermediate Maintenance set provides a full complement of tools. All tools are designed to be used with our tethering and retention systems which maintain or enhance the tools' functionality when used at height or near critical assemblies. Productivity and safety right out of the box.
- Many applications - any industry where a dropped tool could harm personnel, damage machinery or cost production time.
 - High level uses - drilling derricks, wind turbines, cranes, buildings, bridges, masts, powerlines, hangars, scaffold builders
 - Low level uses - stop tools dropping onto flight hardware, into engines, machinery, food production lines, vats, mine shafts, even under water uses
- Set is available with foamed tool control drawers on a special order basis

Tools@Height sets contain an assortment of pouches and lanyards designed for use with a suitable belt such as the Comfort and Utility belts on page 122.



WSC-225-TH

Any tool that weighs more than 5 pounds should be attached to an anchor point such as a work platform or utility bucket rather than the operator.



116 PIECE TOOLS@HEIGHT GENERAL MAINTENANCE SERVICE SET

Contains the following tools:

Product Category	Number of Pieces
Adjustable & Miscellaneous Wrenches	2
Combination, Box, & Open End Wrenches	22
Hammers	4
Hand Sockets, Ratchets, & Accessories	37
Hex Keys & Sockets	1
Miscellaneous Tools	6
Pliers	8
Pry Bars, Punches & Chisels	7
Screwdrivers & Nut drivers	6
Tool Storage	1
Tools@Height Tethers, Lanyards & Specialties	22

**Note: Complete set contents are listed in Appendix A
Set Configurations Available**

Product Code	Description
WSC-116-THTB	Complete Tools@Height General Service Tool Set With Tool Box (116 Pieces Total)
WSC-116-TH	Complete Tools@Height General Service Tool Set Only (115 Pieces Total)

Tool Boxes Included

Product Code	Description
50950	32" Wide x 19" Deep Job Site Box

Features

- The Tools@Height General Maintenance Service set provides a solid complement of tools. All tools are designed to be used with our tethering and retention systems which maintain or enhance the tools' functionality when used at height or near critical assemblies. Productivity and Safety right out of the box.
- Many applications - any industry where a dropped tool could harm personnel, damage machinery or cost production time.
 - High level uses - drilling derricks, wind turbines, cranes, buildings, bridges, masts, powerlines, hangars, scaffold builders
 - Low level uses - stop tools dropping onto flight hardware, into engines, machinery, food production lines, vats, mine shafts, even under water uses
- Set is available with foamed tool control drawers on a special order basis

Tools@Height sets contain an assortment of pouches and lanyards designed for use with a suitable belt such as the Comfort and Utility belts on page 122.



50950



WSC-116-TH



Be sure to use a lanyard that has more weight capacity than the tool you are attaching because drop forces are greater than actual tool weight.



72 PIECE TOOLS@HEIGHT BASIC MAINTENANCE SERVICE SET

Contains the following tools:

Product Category	Number of Pieces	Product Category	Number of Pieces
Adjustable & Miscellaneous Wrenches	1	Miscellaneous Tools	5
Combination, Box, & Open End Wrenches	13	Pliers	5
Hammers	2	Pry Bars, Punches & Chisels	3
Hand Sockets, Ratchets, & Accessories	18	Screwdrivers & Nut drivers	3
Hex Keys & Sockets	1	Tools@Height Tethers, Lanyards, & Specialties	21

Note: Complete set contents are listed in Appendix A Set Configurations Available

Product Code	Description
WSC-72-TH	Complete Tools@Height Basic Maintenance Tool Set in Safe Bucket

Features

- Furnished in Safe Bucket for easy portability. Productivity and safety right out of the box.
- The Tools@Height Basic Maintenance set provides a good start to a Tools@Height tool program. All tools are designed to be used with our tethering and retention systems which maintain or enhance the tools' functionality when used at height or near critical assemblies.
- Many applications - any industry where a dropped tool could harm personnel, damage machinery or cost production time.
 - High level uses - drilling derricks, wind turbines, cranes, buildings, bridges, masts, powerlines, hangars, scaffold builders
 - Low level uses - stop tools dropping onto flight hardware, into engines, machinery, food production lines, vats, mine shafts, even under water uses

Tools@Height sets contain an assortment of pouches and lanyards designed for use with a suitable belt such as the Comfort and Utility belts on page 122.



WSC-72-TH



TOOLS@HEIGHT SCAFFOLD BUILDING KITS

Scaffold builders literally open the box, put on the belt, and go to work with a kit that keeps them safe and increases productivity.

Product Code	Description	Product Code	Description
WTHSCAFFWSA	Small	WTHSCAFFWLA	Large
WTHSCAFFWMA	Medium	WTHSCAFFWXL	X-Large

Contents of Scaffold Building Kits:

Product Code	Description	Product Code	Description
SOTTHFSNE3-22SM	Hammer	HOL-POUCHRET	Tape measure Holster
SOTTHFSN25100	Level	HOL-SCAFFWCOMBO	Scaffold Ratchet Holster w/Bungee Lanyard
BS-63B	Scaffold Ratchet	HOL-1TOOLBLTRET	Single Tool Holster
SOTHTPMA25EM	Tape Measure	HOL-2TOOLBLTRET	Dual Tool Holster
13625-TH	Construction Wrench	BELT-COMFORT	Belt (Small, Medium, Large or X-Large)
PL-204C-TH	Linesman's Pliers	PCH-PARTS-CB	Small Parts pouch w/ Self-closing system
HOL-HAMMERCOMBO	Hammer Holster with Coil Lanyard		

Features

- Each tool is independently tethered, any tool can be used and returned to its' holster while still maintaining three points of contact.
- System is completely modular and can be arranged in any order on the tool belt based on the user's preference.
- Holsters are designed with built-in attachment points or retractors.
- Tools are tethered to the holster at all times so the risk of dropping a tool while transferring from bag to lanyard is eliminated
- Several holsters also feature hook and loop flaps that secure the tool while being transported



Any tool that weighs more than 5 pounds should be attached to an anchor point such as a work platform or utility bucket rather than the operator.


Tools@Height Carabiner

Made of Stainless Steel or Aluminum to withstand corrosive environments

Carabiners, triggers, and clips cannot be removed from lanyards for an extra measure of safety

Load rated carabiners for safety and durability

Screw gate locking mechanisms provide positive retention




Competitive Carabiner

Carabiners, triggers, and clips can easily be removed from lanyards

Not load rated

No screw gate to provide positive retention




EXT-H2L1X72HD



EXT-H2R1X72HD



EXT-H2L1X72MD



EXT-H2LBUNGEEMD



WTHCARA30



WTHCARA25



WTHCARA15



WTHUNI15



WTHUNI12

LANYARDS

Product Code	Description	Load Rating (lbs)	Extension Length (Inches)	Retracted Length (Length)	QTY
EXT-H2L1X72HD	Carabiner to loop web lanyard, Heavy Duty	80	72	n/a	1
EXT-H2R1X72HD	Carabiner to rail hook web lanyard, Heavy Duty	80	72	n/a	1
EXT-H2L1X72MD	Carabiner to loop web lanyard, Medium Duty	35	72	n/a	1
EXT-H2LBUNGEEMD	Carabiner to loop bungee lanyard, Medium Duty	35	49	30	1
WTHCARA30	SST Carabiner to carabiner bungee lanyard, Medium Duty	30	40	18	1
WTHCARA25	SST Carabiner to carabiner bungee lanyard, Medium Duty	25	124	37-45	1
WTHCARA15	SST Carabiner to carabiner bungee lanyard, Standard Duty	15	47	27	1
WTHUNI15	SST Carabiner to loop bungee lanyard, Standard Duty	15	50	30	1
WTHUNI12	SST Carabiner to loop bungee lanyard, Standard Duty	12	124	37-45	1



Be sure to use a lanyard that has more weight capacity than the tool you are attaching because drop forces are greater than actual tool weight.



EXT-H2LBUNGEE



EXT-T2T0.5X12



EXT-T2T0.5X24



EXT-T2T0.5X36



EXT-T2T0.5X18NC



WTHUNI5



WTHL1



WTHL2



WTHANCHOR

LANYARDS AND ANCHOR STRAPS

Product Code	Description	Load Rating (lbs)	Extension Length (Inches)	Retracted Length (Length)	QTY
EXT-H2LBUNGEE	Carabiner to loop bungee lanyard, Standard Duty	10	47	31	1
EXT-H2LBUNGEE-10PK	Carabiner to loop bungee lanyard, Standard Duty 10 pack	10	47	31	10
EXT-T2T0.5X12	Trigger to trigger web lanyard, Standard Duty	10	12	n/a	1
EXT-T2T0.5X12-10PK	Trigger to trigger web lanyard, Standard Duty 10 pack	10	12	n/a	10
EXT-T2T0.5X24	Trigger to trigger web lanyard, Standard Duty	10	24	n/a	1
EXT-T2T0.5X24-10PK	Trigger to trigger web lanyard, Standard Duty 10 pack	10	24	n/a	10
EXT-T2T0.5X36	Trigger to trigger web lanyard, Standard Duty	10	36	n/a	1
EXT-T2T0.5X36-10PK	Trigger to trigger web lanyard, Standard Duty 10 pack	10	36	n/a	10
WTHUNI5	SST Carabiner to loop bungee lanyard, Personal Duty	5	53	33	1
WTHL1	SST Clip to clip web lanyard, Personal Duty	5	14	n/a	1
WTHL2	SST Clip to loop w/barrell lock lanyard, Personal Duty	5	14	n/a	1
EXT-T2T0.5X18NC-10PK	Clip to clip web lanyard, non conductive 10 pack	2	18	n/a	10
WTHANCHOR	Anchor Strap	25	n/a	n/a	1

* Tool Lanyards not included with Tool Holsters unless otherwise stated.

** Tools not included with Tool Holsters.

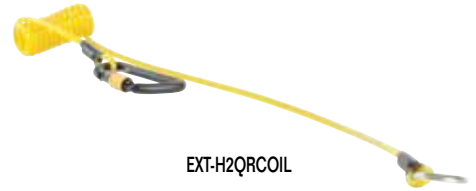
Any tool that weighs more than 5 pounds should be attached to an anchor point such as a work platform or utility bucket rather than the operator.



EXT-H2HCOIL



EXT-T2TCOIL



EXT-H2QRCOIL



EXT-C2CCOIL



EXT-C2LCOIL



EXT-HARDHAT

COIL TETHERS

Product Code	Description	Load Rating (lbs)	Extension Length (Inches)	Retracted Length (Length)	QTY
EXT-H2HCOIL	Patented carabiner to carabiner vinyl coated braided steel tether, Personal Duty	5	67.5	16.5	1
EXT-H2HCOIL-10PK	Carabiner to carabiner vinyl coated braided steel tether, Personal Duty 10 pack	5	67.5	16.5	10
EXT-T2TCOIL	Trigger to Trigger tether, Personal Duty	5	30	9	1
EXT-T2TCOIL-10PK	Trigger to Trigger tether, Personal Duty 10 pack	5	30	9	10
EXT-H2QRCOIL	Carabiner to quick ring tether, Personal Duty	2	65.5	25	1
EXT-H2QRCOIL-10PK	Carabiner to quick ring tether, Personal Duty 10 pack	2	65.5	25	10
EXT-C2CCOIL-10PK	Clip to clip tether, Personal Duty 10 pack	2	44	9	10
EXT-C2LCOIL-10PK	Clip to side release loop tether, Personal Duty 10 pack	2	45.25	10	10
EXT-HARDHAT-10PK	Clip to loop hard hat tether 10 pack	2	44.5	12	10
EXT-HARDHAT-100PK	Clip to loop hard hat tether 100 pack	2	44.5	12	100



WTHUNIRET2



WTHUNIRET2CLIPS



WTHUNIRET1



WTHUNIRET1CLIPS



WTHWSRET1

RETRACTABLE TETHERS

Product Code	Description	Load Rating (lbs)	Extension Length (Inches)	Retracted Length (Length)	QTY
WTHUNIRET2	Self flushing retractable tether with disconnectable loop	2	42	17	1
WTHRET2CLIPS	25 pack of disconnectable clips/loop for WTHUNIRET2	2	n/a	8	25
WTHUNIRET1	Self flushing retractable tether with disconnectable loop	1	36	14	1
WTHRET1CLIPS	25 pack of disconnectable clips/loop for WTHUNIRET1 and WTHWSRET1	1	n/a	7 3/4	25
WTHWSRET1	Adjustable wrist strap with self flushing retractable tether and disconnectable loop	1	49	10	1



Be sure to use a lanyard that has more weight capacity than the tool you are attaching because drop forces are greater than actual tool weight.



WB-S

WB-M

WB-L



WB-SLIM-S

PULLAWAY WRISTBANDS

Product Code	Size	Load Rating (lbs)	QTY
WB-S	Small	5	1
WB-S-10PK	Small	5	10
WB-M	Medium	5	1
WB-M-10PK	Medium	5	10
WB-L	Large	5	1
WB-L-10PK	Large	5	10
WB-SLIM-S-10PK	Slim / Small	5	10
WB-SLIM-M-10PK	Slim / Medium	5	10
WB-SLIM-L-10PK	Slim / Large	5	10

Features

- Pullaway wristbands are designed so that they can be escaped from in emergency situations
- Pullaway Wristbands feature an elastic strap that conform to the users wrist size automatically.

ADJUSTABLE WRISTBANDS

Product Code	Load Rating (lbs)	QTY
WTHWS1	5	1
WB-ADJ	5	1
WB-ADJ-10PK	5	10
WB-ADJCORD	5	1
WB-ADJCORD-10PK	5	10
WB-ADJRET	1.5	1
WB-ADJRET-10PK	1.5	10
WTHWSRET1	1	1

Features

- Adjustable Wristbands can be sized to virtually any wrist size with Hook and Loop closure straps.

Tools not included with Wristbands.



WTHWS1



WB-ADJCORD



WB-ADJ



WB-ADJRET



WTHWSRET1

Any tool that weighs more than 5 pounds should be attached to an anchor point such as a work platform or utility bucket rather than the operator.



HOL-ADJRADIOCOMBO



HOL-BOTTLE



HOL-HAMMER



HOL-1TOOLBLTRET



HOL-1TOOLHAR



HOL-1TOOLXD



HOL-2TOOLBLTRET



HOL-2TOOLHAR



HOL-BOXWHARRET



HOL-POUCHRET



HOL-SCAFFWRET



HOL-TAPECOMBO



RET-52STEEL

TOOL HOLSTERS

Product Code	Description	Product Code	Description
HOL-ADJRADIO [†]	Adjustable Radio Holster	HOL-2TOOLHAR	Dual Tool Harness Holster
HOL-ADJRADIOCOMBO	Adjustable Radio Holster Combo (Includes EXT-C2LCOIL)	HOL-2TOOLHARRET [†]	Dual Tool Harness Holster with Retractors
HOL-BOTTLE	Bottle / Spray Can Holster	HOL-BOXWHARRET [†]	Box Wrench Holster with Retractor (Harness)
HOL-BOTTLECOMBO	Bottle / Spray Can Holster Combo (Includes EXT-C2CCOIL)	HOL-POUCHRET [†]	Pouch Holster with Retractor
HOL-HAMMER [†]	Hammer Holster	HOL-SCAFFWRET [†]	Scaffold Wrench Holster with Retractor
HOL-HAMMERCOMBO	Hammer Holster Combo (Includes EXT-H2QRCOIL)	HOL-SCAFFWCOMBO	Scaffold Wrench Holster with Retractor Combo (Includes EXT-H2LBUNGEE)
HOL-1TOOLBLT	Single Tool Belt Holster	HOL-TAPERET [†]	Tape Measure Holster with Retractor
HOL-1TOOLBLTRET [†]	Single Tool Belt Holster with Retractor	HOL-TAPESLEEVE [†]	Tape Measure Sleeve
HOL-1TOOLHAR	Single Tool Harness Holster	HOL-TAPECOMBO	Tape Measure Holster with Retractor Combo (Includes HOL-TAPESLEEVE)
HOL-1TOOLHARRET [†]	Single Tool Harness Holster with Retractor	RET-52STEEL	52' Steel Cable Retractor with Polycarbonate Body
HOL-1TOOLXD [†]	Extra-Deep Single Tool Holster		
HOL-2TOOLBLT	Dual Tool Belt Holster		
HOL-2TOOLBLTRET [†]	Dual Tool Belt Holster with Retractors		

* Tool Lanyards not included with Tool Holsters unless otherwise stated.

** Tools not included with Tool Holsters.

[†]Patent Pending



Be sure to use a lanyard that has more weight capacity than the tool you are attaching because drop forces are greater than actual tool weight.



PCH-PARTS-CC



PCH-UTILITY



PCH-INSPECT



PCH-TOOL

PCH-TOOLXD

EXT-H2LBUNGEE

SMALL PARTS POUCH

Product Code	Description
PCH-PARTS-CB	Small Parts Pouch - Canvas Black
PCH-PARTS-CC	Small Parts Pouch - Canvas Camo
PCH-PARTS-CO	Small Parts Pouch - Canvas Orange
PCH-PARTS-VY	Small Parts Pouch - Vinyl Yellow
PCH-PARTSXD-CB	Small Parts Pouch Extra-Deep - Canvas Black

Features

- The patented Small Parts Pouch stops accidental drops with an innovative self-closure system that traps objects inside making it nearly impossible for objects to fall out once placed in the bag.
- Easy to retrieve objects since no opening or closing is necessary.
- Available in several colors, and a vinyl variant.
- Extra-deep Small Parts Pouch is also available for extra storage space.

UTILITY POUCH

Product Code	Description
PCH-UTILITY	Utility Pouch

Features

- Two welded D-Rings on front of pouch to tie off tools.
- One additional D-Ring inside pouch.
- Two inner pouch pockets for storing tools.
- Belt loop on back of pouch.
- Two side ears are perfect for holding spud wrenches and sleeve bars.
- Drain vent on the bottom of the pouch.

INSPECTION POUCH

Product Code	Description
PCH-INSPECT	Inspection Pouch

Features

- Provisional patent pending

TOOL POUCHES

Product Code	Description
PCH-TOOL	Tool Pouch with D-Ring
PCH-TOOLRET	Tool Pouch with D-Ring and Retractors
PCH-TOOLTRIG	Tool Pouch with D-Ring and Triggers
PCH-TOOLXD	Extra Deep Tool Pouch with D-Ring
PCH-TOOLXDRET	Extra Deep Tool Pouch with D-Ring and Retractors
PCH-TOOLXDTRIG	Extra Deep Tool Pouch with D-Ring and Triggers

Any tool that weighs more than 5 pounds should be attached to an anchor point such as a work platform or utility bucket rather than the operator.

COMFORT TOOL BELTS

Product Code	Waist Size (Inches)
BELT-COMFORT-S	28" - 32"
BELT-COMFORT-M	32" - 36"
BELT-COMFORT-L	36" - 40"
BELT-COMFORT-XL	40" - 44"
BELT-COMFORT-2XL	44" - 48"
BELT-COMFORT-3XL	48" - 52"



BELT-COMFORT-S

Features

- A drop prevention tool belt system that's both durable and comfortable
- Modular design allowing the user to customize their own personal holster and pouch set up.

UTILITY BELTS

Product Code	Waist Size (Inches)
BELT-UTILITY-SL	28" - 46"
BELT-UTILITY-XL	40" - 54"



BELT-UTILITY-SL

Features

- Utility tool belt features a high strength grommet closure system with padding inside two layers of cordura that provides for durability and comfort.

BELT LOOPS

Product Code	Description	Load Rating (lbs)	QTY
BELT-DRLOOP	Belt Loop D-Ring	5	1
BELT-DRLOOP-10PK	Belt Loop D-Ring	5	10
BELT-TRLOOP	Belt Loop Trigger	5	1
BELT-TRLOOP-10PK	Belt Loop Trigger	5	10

Features

- Compatible with all tool belts above
- D-Ring Belt Loop Attachment creates an instant attachment point that is third-party load-rated for 5 lbs.
- Belt Loop Trigger creates an instant staging point that is third-party load-rated for 5 lbs. A thumb release steel trigger snap allows for quick tool transfers while maintaining a secure connection, even while wearing work gloves. Modular design allowing the user to customize their own personal holster and pouch set up.



BELT-DRLOOP



BELT-TRLOOP



Be sure to use a lanyard that has more weight capacity than the tool you are attaching because drop forces are greater than actual tool weight.



BKT-100HLC



BKT-250DRAWV



BKT-48SCAF



BKT-HBINSERT

SAFE BUCKETS

Product Code	Closure System	Body Material	Load Rating (lbs)
BKT-100HLC	Hook and Loop	Canvas	100
BKT-100DRAWC	Drawstring	Canvas	100
BKT-250HLV	Hook and Loop	Vinyl	250
BKT-250DRAWV	Drawstring	Vinyl	250

Features

- Every Safe Bucket is manufactured with either a hook and loop or drawstring closure system which helps prevent accidental drops.
- All Safe Buckets are third-party load rated.
- Sewn into the bottom of every Safe Bucket is hard composite plating that protects the bucket from accidental punctures. A protective leather sleeve covers the inserts that is resilient to the elements and harsh work environments.
- The Safe Bucket was engineered to be used with tools at height, and includes multiple connection points that can be tethered to. Workers can tether their tools directly to the Safe Bucket when being used, and store their tools for transport when finished.
- Instead of rope which is susceptible to fraying, a heavy-duty hoisting/shoulder strap is built into every Safe Bucket. Each bucket is also equipped with a high-quality and lightweight aluminum twist-lock carabiner load rated for 30 kN (6,700 lbs). There is no need to worry about a knot failing, or a non-locking carabiner which may slip off a connection point.
- Safe Buckets are 15 inches tall and have a 12.5 inch Diameter.

HARD BODY SAFE BUCKET INSERT

Product Code

BKT-HBINSERT

Features

- The Hard Body Safe Bucket Insert converts the standard soft body Safe Bucket into a hard body bucket with four inner pockets for staging tools and small parts. The insert can be removed and reused, and is compatible with all standard Safe Buckets.

Tools not included

EXTRA DEEP SAFE BUCKETS

Product Code	Length (Inches)	Load Rating (lbs)
BKT-48SCAF	48	100
BKT-72SCAF	72	100
BKT-120SCAF	120	100

Features

- Extra Deep Safe Buckets feature a hook and loop closure system allowing for the safe transport of scaffold poles and large tools.
- Available in three different lengths.
- Third-party load rated for 100 pounds.
- A heavy duty webbing hoisting strap comes with a built in twist-lock aluminum carabiner for lifting.

Any tool that weighs more than 5 pounds should be attached to an anchor point such as a work platform or utility bucket rather than the operator.



TOOLS@HEIGHT SUPERCOMBO® COMBINATION WRENCHES

High Polish Chrome and Satin Chrome Finish, 12 Point, SAE

Product Code	Size (Inches)	A Overall Length (Inches)	B Open End Width (Inches)	C Open End Thickness (Inches)	D Box End Diameter (Inches)	E Box End Thickness (Inches)	Weight (lbs)
1208SC-TH +	1/4	4 1/4	9/16	1/8	13/32	3/16	0.04
1210SC-TH +	5/16	5 3/4	1 1/16	5/32	1/2	7/32	0.08
1212SC-TH ++	3/8	6 1/2	1 3/16	3/16	9/16	1/4	0.12
1214SC-TH ++	7/16	7 1/4	1 5/16	7/32	1 1/16	5/32	0.17
1216SC-TH ++	1/2	8	1 1/16	1/4	3/4	11/32	0.23
1218SC-TH ++	9/16	8 3/4	1 1/4	1/4	7/8	3/8	0.31
1220SC-TH ++	5/8	9 1/2	1 3/8	5/32	15/16	13/32	0.43
1222SC-TH ++	11/16	10 1/4	1 1/2	5/16	1 1/32	7/16	0.51
1224SC-TH ++	3/4	11	1 5/8	3/16	1 1/8	1/2	0.62
1226SC-TH ++	13/16	11 3/4	1 3/4	3/8	1 7/32	17/32	0.79
1228SC-TH ++	7/8	12 1/2	1 7/8	13/32	1 5/16	9/16	0.96
1230SC-TH ++	15/16	13 1/4	2	7/16	1 3/8	19/32	1.20
1232SC-TH ++	1	14	2 1/8	15/32	1 19/32	5/8	1.48
1234SC-TH ++	1 1/16	14 3/4	2 1/4	1/2	1 9/16	21/32	1.65
1236SC-TH ++	1 1/8	15 1/2	2 13/32	17/32	1 23/32	1 1/16	1.94
1240SC-TH ++	1 1/4	17	2 21/32	9/16	1 13/16	3/4	2.58
1242-TH **	1 5/16	17 3/4	2 13/16	19/32	1 29/32	3/4	2.96
1244-TH **	1 3/8	18 1/2	2 15/16	5/8	2	3/4	3.45
1246-TH **	1 7/16	19 1/4	3 1/16	5/8	2 3/32	7/8	3.85
1248-TH **	1 1/2	20 1/32	3 3/16	11/16	2 3/16	7/8	4.29
1180-TH **	1 5/8	21 1/2	3 1/16	11/16	2 11/32	7/8	3.70
1182-TH **	1 11/16	22 9/32	3 7/16	23/32	2 7/16	7/8	5.22
1184-TH **	1 3/4	22 7/8	3 9/16	23/32	2 17/32	1 1/32	5.62
1186-TH **	1 13/16	23 15/32	3 11/16	3/4	2 5/8	1 1/32	6.34
1188-TH **	1 7/8	24 1/32	3 13/16	25/32	2 23/32	1 1/32	6.92
1190-TH **	2	25 1/4	4 1/16	27/32	2 7/8	1 1/32	8.20

+ High Polish Chrome Finish with SUPERTORQUE® Box End.

++ High Polish Chrome Finish with SUPERCOMBO® Open End and SUPERTORQUE® Box End.

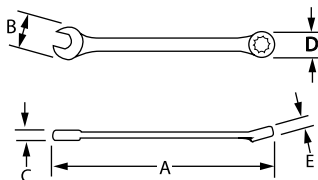
** Satin Chrome Finish with SUPERTORQUE® Box End and Standard Open End.

* Satin Chrome Finish with Standard Open and Box Ends.

Fed. Spec.: ANSI B107.6; SAE AS 954

Features

- SUPERCOMBO® open end has specially designed grooves that direct wrench force away from fastener corners.
- SUPERTORQUE® box opening design allows application of higher torque without rounding or deforming hex fastener points. No contact is made at the corners. Instead, wrenching forces are placed on the flat surfaces behind the points.
- Meets or exceeds aerospace specification AS 954 for 12 point fasteners (as defined by AS 870) to provide accurate torque/tension relationship for precision application.
- May be used on all common hex (6 point) fasteners with considerable advantage over conventional box end wrenches to increase both hand tool flexibility and economy.
- Box and open end openings are identical.



1222SC-TH



1180-TH



Wrench with Safety Coil -

Secure lanyard attachments need to withstand tough site use, including low temperature, so structural integrity is critical

- Superior Design - No welds to fail
- High Performance - Made from polished stainless steel, they have superior flexibility and shock-absorbing qualities over welded attachments
- Seven sizes available to support wrenches up to 1 1/2" or 55mm
- Slides out of the way along the wrenches handle to provide full use of the handle and achieve greatest leverage



Be sure to use a lanyard that has more weight capacity than the tool you are attaching because drop forces are greater than actual tool weight.



TOOLS@HEIGHT SUPERCOMBO® COMBINATION WRENCHES

High Polish Chrome Finish, 12 Point, Metric



1215MSC-TH

Product Code	Size (Inches)	A Overall Length (Inches)	B Open End Width (Inches)	C Open End Thickness (Inches)	D Box End Diameter (Inches)	E Box End Thickness (Inches)	Weight (lbs)
1207MSC-TH ++	7	5 5/16	5/8	5/32	15/32	7/32	0.06
1208MSC-TH ++	8	5 25/32	23/32	5/32	1/2	7/32	0.08
1209MSC-TH ++	9	6 9/32	19/16	3/16	9/16	1/4	0.10
1210MSC-TH ++	10	6 3/4	7/8	3/16	5/8	9/32	0.13
1211MSC-TH ++	11	7 1/4	31/32	7/32	11/16	5/16	0.18
1212MSC-TH ++	12	7 11/16	1 1/32	7/32	3/4	5/16	0.20
1213MSC-TH ++	13	8 1/32	1 1/8	1/4	25/32	11/32	0.23
1214MSC-TH ++	14	8 5/8	1 7/32	1/4	21/32	3/8	0.32
1215MSC-TH ++	15	9 9/32	1 9/32	9/32	29/32	13/32	0.35
1216MSC-TH ++	16	9 1/2	1 3/8	9/32	15/16	13/32	0.41
1217MSC-TH ++	17	10 1/16	1 15/32	5/16	1	7/16	0.47
1218MSC-TH ++	18	10 17/32	1 17/32	5/16	1 1/16	15/32	0.56
1219MSC-TH ++	19	11 1/32	1 5/8	11/32	1 1/8	1/2	0.67
1220MSC-TH ++	20	11 1/2	1 23/32	3/8	1 3/16	1/2	0.77
1221MSC-TH ++	21	11 25/32	1 3/4	3/8	1 7/32	17/32	0.82
1222MSC-TH ++	22	12 1/2	1 29/32	13/32	1 5/16	9/16	1.08
1223MSC-TH ++	23	12 7/8	1 31/32	7/16	1 11/32	9/16	1.08
1224MSC-TH ++	24	13 9/32	2	7/16	1 3/8	19/32	1.20
1225MSC-TH ++	25	14 1/32	2 5/32	15/32	1 15/32	5/8	1.49
1226MSC-TH +	26	14 5/16	2 3/16	1/2	1 1/2	21/32	1.51
1227MSC-TH +	27	14 25/32	2 9/32	1/2	1 9/16	11/16	1.64
1229MSC-TH +	29	15 17/32	2 13/32	17/32	1 21/32	23/32	2.00
1230MSC-TH +	30	16 9/32	2 17/32	17/32	1 3/4	3/4	2.30
1232MSC-TH +	32	17 1/32	2 11/16	9/16	1 13/16	3/4	2.76
1234MSC-TH +	34	17 29/32	2 13/16	19/32	1 29/32	3/4	2.92
1236MSC-TH +	36	19 9/32	3 1/16	21/32	2 3/32	7/8	3.86

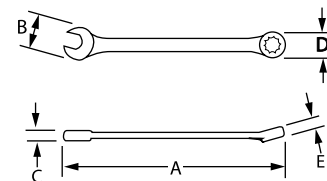
+ High Polish Chrome Finish with SUPERTORQUE® Box End

++ High Polish Chrome Finish with SUPERCOMBO® Open End and SUPERTORQUE® Box End
Fed. Spec.: ANSI B107.6; SAE AS 954



Features

- SUPERCOMBO® open end has specially designed grooves that direct wrench force away from fastener corners.
- SUPERTORQUE® box opening design allows application of higher torque without rounding or deforming hex fastener points.
No contact is made at the corners. Instead, wrenching forces are placed on the flat surfaces behind the points.
- Meets or exceeds aerospace specification AS 954 for 12 point fasteners (as defined by AS 870) to provide accurate torque/tension relationship for precision application.
- May be used on all common hex (6 point) fasteners with considerable advantage over conventional box end wrenches to increase both hand tool flexibility and economy.
- Box and open end openings are identical.



Wrench with Safety Coil -

Secure lanyard attachments need to withstand tough site use, including low temperature, so structural integrity is critical

- Superior Design - No welds to fail
- High Performance - Made from polished stainless steel, they have superior flexibility and shock-absorbing qualities over welded attachments
- Seven sizes available to support wrenches up to 1 1/2" or 55mm
- Slides out of the way along the wrenches handle to provide full use of the handle and achieve greatest leverage

Any tool that weighs more than 5 pounds should be attached to an anchor point such as a work platform or utility bucket rather than the operator.



TOOLS@HEIGHT REVERSIBLE RATCHETING COMBINATION WRENCHES

High Polish Chrome Finish, 12 Point, Metric

Product Code	Size (Inches)	A Overall Length (Inches)	B Open End Width (Inches)	C Open End Thickness (Inches)	D Box End Diameter (Inches)	E Box End Thickness (Inches)	Weight (lbs)
1208MRC-TH	8	5 1/4	23/32	3/16	23/32	9/32	0.08
1209MRC-TH	9	5 7/8	19/16	5/32	25/32	5/16	0.14
1210MRC-TH	10	6 1/4	7/8	7/32	7/8	11/32	0.15
1211MRC-TH	11	6 5/8	19/16	7/32	29/32	11/32	0.22
1212MRC-TH	12	6 13/16	1	7/32	31/32	3/8	0.00
1213MRC-TH	13	7	1 1/32	1/4	1	13/32	0.36
1214MRC-TH	14	7 3/8	1 3/16	1/4	1 3/32	13/32	0.42
1215MRC-TH	15	7 3/4	1 1/4	9/32	1 5/32	7/16	0.56
1216MRC-TH	16	8 3/16	1 11/32	9/32	1 7/32	7/16	0.77
1217MRC-TH	17	9	1 7/16	9/32	1 9/32	1/2	0.93
1218MRC-TH	18	9 3/8	1 17/32	5/16	1 3/8	15/32	1.15
1219MRC-TH	19	9 3/4	1 17/32	11/32	1 7/16	17/32	1.33

Features

- High-polished chrome finish cleans easily.
- Ratchet lever is easily accessible for quick direction changes.
- Recessed corners in ends provide extra turning power.



1210MRC-TH



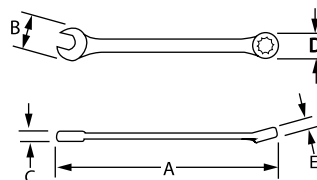
TOOLS@HEIGHT REVERSIBLE RATCHETING COMBINATION WRENCHES

High Polish Chrome Finish, 12 Point, SAE

Product Code	Size (Inches)	A Overall Length (Inches)	B Open End Width (Inches)	C Open End Thickness (Inches)	D Box End Diameter (Inches)	E Box End Thickness (Inches)	Weight (lbs)
1208RC-TH	8	5 1/4	23/32	3/16	23/32	9/32	.06
1210RC-TH	5/16	5 1/4	23/32	5/32	23/32	9/32	0.08
1212RC-TH	3/8	6 1/4	7/8	3/16	7/8	5/16	0.10
1214RC-TH	7/16	6 5/8	19/16	7/32	29/32	11/32	0.13
1216RC-TH	1/2	7	1 1/32	1/4	1	13/32	0.16
1218RC-TH	9/16	7 3/8	1 3/16	1/4	1 3/32	13/32	0.18
1220RC-TH	5/8	8 7/32	1 11/32	9/32	1 7/32	7/16	0.00
1222RC-TH	11/16	9	1 7/16	9/32	1 11/16	1/2	0.27
1224RC-TH	3/4	9 3/4	1 17/32	11/32	1 15/32	17/32	0.00
1226RC-TH	13/16	10 1/2	1 23/32	3/8	1 9/16	17/32	0.36
1228RC-TH	7/8	11 13/32	1 7/8	11/32	1 21/32	19/32	0.44
1230RC-TH	15/16	12	1 31/32	15/32	1 27/32	5/8	0.50
1232RC-TH	1	13	2 3/32	15/32	1 7/8	5/8	0.56

Features

- High-polished chrome finish cleans easily.
- Ratchet lever is easily accessible for quick direction changes.
- Recessed corners in ends provide extra turning power.



1232RC-TH



Wrench with Safety Coil -

Secure lanyard attachments need to withstand tough site use, including low temperature, so structural integrity is critical

- Superior Design - No welds to fail
- High Performance - Made from polished stainless steel, they have superior flexibility and shock-absorbing qualities over welded attachments
- Seven sizes available to support wrenches up to 1 1/2" or 55mm
- Slides out of the way along the wrenches handle to provide full use of the handle and achieve greatest leverage



Be sure to use a lanyard that has more weight capacity than the tool you are attaching because drop forces are greater than actual tool weight.



3732-TH



TOOLS@HEIGHT 15°-60° DOUBLE OPEN END ANGLE-HEAD WRENCHES

Chrome Satin Finish, SAE

Product Code	Size (Inches)	A Head Diameter	B Head Thickness	C Overall Length (Inches)	Weight (lbs)
3716-TH	1/2	1	7/32	5 1/2	0.10
3718-TH	9/16	1 1/8	1/4	6	0.14
3720-TH	5/8	1 3/16	9/32	6 1/4	0.14
3722-TH	11/16	1 5/16	9/32	7	0.21
3724-TH	3/4	1 7/16	9/32	7 1/4	0.28
3726-TH	13/16	1 19/32	9/32	7 1/2	0.27
3728-TH	7/8	1 21/32	9/32	8 1/4	0.35
3732-TH	1	1 19/16	5/16	9 3/4	0.41
3734-TH	1 1/16	2 1/16	5/16	10	0.50
3736-TH	1 1/8	2 1/4	5/16	11	0.61
3740-TH	1 1/4	2 3/8	11/32	11 1/2	0.70
3744-TH	1 3/8	2 11/16	13/32	12 1/2	0.85
3746-TH	1 7/16	2 11/16	13/32	12 1/2	1.25
3748-TH	1 1/2	2 11/16	13/32	12 1/2	1.19

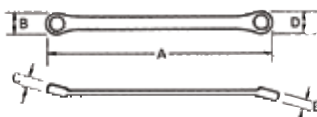
Fed. Spec. ANSI B107.39 Type 2 Class 3

Features

- Wrench heads are offset at 15° and 60° to the handle
- Both ends are the same size to permit the wrench to be used in four different positions
- 45° chamfer on wrench ends allow easy placement of wrench on the fastener
- Continuous arc design minimizes spreading and is stronger than "V" design
- Thin head is perfect for tight clearances
- Satin chrome finish provides good grip and cleans easily



7731B-TH



TOOLS@HEIGHT DOUBLE HEAD 10° OFFSET BOX END WRENCHES

Chrome Satin Finish, 12 Point, SAE

Product Code	Size (Inches)	A Overall Length (Inches)	B Box End Diameter (Inches)	C Box End Thickness (Inches)	D Box End Diameter (Inches)	E Box End Thickness (Inches)	Weight (lbs)
7723-TH	3/8 x 7/16	7 5/8	19/32	5/16	21/32	11/32	0.11
7725B-TH	1/2 x 9/16	8 11/16	3/4	3/8	27/32	3/8	0.30
7727A-TH	5/8 x 11/16	10 3/32	29/32	7/16	1	15/32	0.47
7029B-TH	11/16 x 3/4	10 15/16	1	15/32	1 3/32	1/2	0.53
7731A-TH	3/4 x 7/8	12 1/32	1 3/32	1/2	1 1/4	9/16	0.73
7731B-TH	13/16 x 7/8	12 13/32	1 3/16	17/32	1 1/4	9/16	0.80
7033C-TH	15/16 x 1	14 1/8	1 11/32	19/32	1 7/16	5/8	0.94
7038-TH	1 1/8 x 1 3/16	16 3/32	1 19/32	11/16	1 11/16	11/16	1.66
7039B-TH	1 1/4 x 1 9/16	17 5/8	1 25/32	23/32	1 27/32	3/4	0.00

Fed. Spec. ANSI B107.6

Features

- SUPERTORQUE® box opening design allows application of higher torque without rounding or deforming hex fastener points. No contact is made at the corners. Instead, wrenching forces are placed on the flat surfaces behind the points.
- 10° offset box end allows clearance in tight areas.
- Sizes are clearly marked on handle ends.



Any tool that weighs more than 5 pounds should be attached to an anchor point such as a work platform or utility bucket rather than the operator.



TOOLS@HEIGHT DOUBLE HEAD 10° OFFSET BOX END WRENCHES

Chrome Satin Finish, 12 Point, Metric

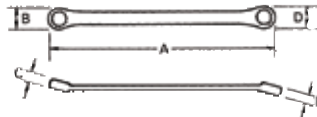
Product Code	Size (MM)	A Overall Length (Inches)	B Box End Diameter (Inches)	C Box End Thickness (Inches)	D Box End Diameter (Inches)	E Box End Thickness (Inches)	Weight (lbs)
BWM-0810-TH	8 x 10	7 5/16	1/2	9/32	19/32	5/16	0.15

Fed. Spec. ANSI B107.9M



Features

- SUPERTORQUE® box opening design allows application of higher torque without rounding or deforming hex fastener points. No contact is made at the corners. Instead, wrenching forces are placed on the flat surfaces behind the points.
- 10° offset box end allows clearance in tight areas.
- Sizes are clearly marked on handle ends.



BMW-0810-TH



TOOLS@HEIGHT DOUBLE HEAD FLARE NUT WRENCHES

Chrome Satin Finish, 6 Point, SAE

Product Code	Size (Inches)	A Overall Length (Inches)	B Open End Dia (Inches)	C Open End Thickness (Inches)	D Open End Dia (Inches)	E Open End Thickness (Inches)	Weight (lbs)
XFN-0810-TH	1/4 x 5/16	4 27/32	18/32	1/4	5/8	8/32	0.12
XFN-1214-TH	3/8 x 7/16	5 13/16	25/32	5/16	27/32	11/32	0.14
XFN-1618-TH	1/2 x 9/16	6 13/16	15/16	3/8	1	13/32	0.23
XFN-2022-TH	5/8 x 1 1/16	7 3/4	1 3/32	7/16	3/16	15/32	0.38
XFN-2432-TH	3/4 x 1	9 1/2	1 1/4	1/2	19/32	5/8	0.70
XFN-2836-TH	7/8 x 1 1/8	10.5	1 7/16	9/16	1 3/4	11/16	0.99

Fed. Spec.: ANSI B107.6

WS-14-TH 5 Piece Double Head Flare Nut Wrench Set, 6 Point, SAE, in Pouch - R-4 2.71 lbs

Contents Include:

Product Code	Size (Inches)	Product Code	Size (Inches)	Product Code	Size (Inches)
XFN-1214-TH	3/8 x 7/16	XFN-2022-TH	5/8 x 1 1/16	XFN-2836-TH	7/8 x 1 1/8
XFN-1618-TH	1/2 x 9/16	XFN-2432-TH	3/4 x 1		

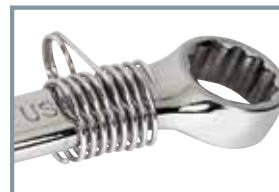
Features

- Will not mar fittings on pipes and tubing.
- Satin chrome textured finish provides great feel and extra gripping power.
- Recessed corners in ends provide extra turning power.



XFN-2836-TH

WS-14-TH



Wrench with Safety Coil -

Secure lanyard attachments need to withstand tough site use, including low temperature, so structural integrity is critical

- Superior Design - No welds to fail
- High Performance - Made from polished stainless steel, they have superior flexibility and shock-absorbing qualities over welded attachments
- Seven sizes available to support wrenches up to 1 1/2" or 55mm
- Slides out of the way along the wrenches handle to provide full use of the handle and achieve greatest leverage



Be sure to use a lanyard that has more weight capacity than the tool you are attaching because drop forces are greater than actual tool weight.



TOOLS@HEIGHT DOUBLE HEAD FLARE NUT WRENCHES

Chrome Satin Finish, 6 Point, Metric

Product Code	Size (MM)	A	B	C	D	E	Weight (lbs)
		Overall Length (Inches)	Open End Dia (Inches)	Open End Thickness (Inches)	Open End Dia (Inches)	Open End Thickness (Inches)	
10650-TH	9 x 11	5 11/16	13/16	11/32	15/16	5/16	0.11
10652-TH	10 x 12	6 1/8	7/8	3/8	29/32	5/16	0.15
10654-TH	13 x 14	6 7/8	1	3/8	1 3/32	3/8	0.20
10656-TH	15 x 17	7 7/8	1 1/16	7/16	1 7/32	1/2	0.28
10658-TH	19 x 21	8 7/8	1 9/32	1/2	1 13/32	17/32	0.43

Fed. Spec.: ANSI B107.9M

11692-TH 5 Piece Double Head Flare Nut Wrench Set, 6 Point, Metric, in Pouch - 50001 1.43 lbs.

Contents Include:

Product Code	Size (MM)	Product Code	Size (MM)	Product Code	Size (MM)
10650-TH	9 x 11	10654-TH	13 x 14	10658-TH	19 x 21
10652-TH	10 x 12	10656-TH	15 x 17		

Features

- Will not damage fittings on pipes and tubing.
- Satin chrome textured finish provides great feel and extra gripping power.
- Recessed corners in ends provide extra turning power.



TOOLS@HEIGHT DOUBLE HEAD RATCHETING BOX WRENCHES

High Polish Chrome Finish, 6 & 12 Point, SAE

Product Code	Number of Points	Size (Inches)	A	B	C	D	E	Weight (lbs)
			Overall Length (Inches)	Box End Diameter (Inches)	Box End Thickness (Inches)	Box End Diameter (Inches)	Box End Thickness (Inches)	
RB-810-TH	6	1/4 x 3/16	4 1/4	19/32	3/8	1 1/16	3/8	.12
RB-1214-TH	6	3/8 x 7/16	5 1/2	25/32	3/8	7/8	3/8	.18
RB-1618-TH	6	1/2 x 9/16	6 3/4	1	1/2	1 5/8	1/2	.33
RB-2022-TH	12	5/8 x 1 1/16	8 1/8	1 5/16	1/2	1 7/16	1/2	.44
RB-2428-TH	12	3/4 x 7/8	9 1/4	1 13/32	1/2	1 9/16	1/2	.48

Features

- Allows fast removal of fasteners with a ratcheting action at each end.
- Ideal for long "bolt-through" applications.
- Flat handle allows access to tight clearance areas.





TOOLS@HEIGHT ADJUSTABLE WRENCH

Chrome Finish

Product Code	Length (Inches)	Maximum Jaw Opening (Inches)	Head Thickness (Inches)	Weight (lbs.)
AP-6A-TH	6	3/4	7/16	.30
AP-8A-TH	8	1	1/2	.57
AP-10A-TH	10	1 1/64	39/64	.98
AP-12A-TH	12	1 5/16	23/32	1.53
AP-15A-TH	15	1 11/16	51/64	2.95

Features

- Chrome plated finish allows for easy cleaning after each use.
- Serrated knurl is designed for quick and smooth adjustments.
- I-Beam designed handle provides strength and durability.
- Inch (SAE) scale is laser-etched on head face for easy determination of bolt head width.



AP-8A-TH



TOOLS@HEIGHT ADJUSTABLE CONSTRUCTION WRENCH

Heavy-Duty With Polished Head and Measurement Scales

Product Code	Length (Inches)	Maximum Jaw Opening (Inches)	Head Thickness (Inches)	Weight (lbs.)
13625-TH	15	1 1/2	23/32	2.24

Features

- Tapered spud handle locates and aligns bolts and rivets.
- Hole in handle permits tethering wrench for safety.
- Measurement scale on head conveniently shows fastener size.
- Economical black phosphate finish resists rust.



13625-TH



TOOLS@HEIGHT ADJUSTABLE PIN SPANNER WRENCHES

Industrial Black Finish, SAE

Product Code	Span Diameter (Inches)	Pin Diameter (Inches)	Pin Length (Inches)	Overall Length (Inches)	Weight (lbs.)
O-471-TH	3/4 to 2	1/8	1/8	5 3/8	.27
O-472-TH	1 1/4 to 3	3/16	3/16	6 7/8	.48
O-474-TH	2 to 4 3/4	1/4	1/4	9 1/2	.93
O-474A-TH	4 1/2 to 6 1/4	3/8	1/4	9 7/8	1.10

Features

- Ideal for adjusting collars, lock nut rings, and bearings.
- Specifically engineered to hold up under the most rigorous industrial use.



O-472-TH



O-474-TH



Be sure to use a lanyard that has more weight capacity than the tool you are attaching because drop forces are greater than actual tool weight.



471-TH



TOOLS@HEIGHT ADJUSTABLE HOOK SPANNER WRENCHES
Industrial Black Finish, SAE

Product Code	Span Diameter (Inches)	Hook Depth (Inches)	Hook Thickness (Inches)	Overall Length (Inches)	Weight (lbs.)
471-TH	3/4 to 2	1/8	1 1/32	5 3/8	.26
472-TH	1 1/4 to 3	5/32	1 3/32	7 1/4	.49
474-TH	2 to 4 3/4	3/16	1 5/32	11 1/2	.97
474A-TH	4 1/2 to 6 1/4	1/4	1 5/32	17 1/2	1.05

Features

- Ideal for adjusting collars, lock nut rings, and bearings.
- Specifically engineered to hold up under the most rigorous industrial use.



483-TH



484-TH



TOOLS@HEIGHT ADJUSTABLE FACE SPANNER WRENCHES
Industrial Black Finish, SAE

Product Code	Span Diameter (Inches)	Pin Diameter (Inches)	Pin Length (Inches)	Overall Length (Inches)	Weight (lbs.)
482-TH	2	3/16	1/4	6 1/4	.31
483-TH	3	1/4	1/4	8 1/8	.63
484-TH	4	5/16	1/2	10 3/8	1.01

Features

- Ideal for adjusting collars, lock nut rings, and bearings.
- Specifically engineered to hold up under the most rigorous industrial use.



TOOLS@HEIGHT T-HANDLE HEX DRIVERS

SAE & Metric

Product Code	Shaft Length (Inches)	Size (Inches)	Weight (lbs.)
900T-094-TH	4 1/8	3/32	0.09
900T-109-TH	4 1/8	7/64	0.08
900T-125-TH	4 1/8	1/8	0.12
900T-141-TH	4 1/8	9/64	0.09
900T-156-TH	5 1/2	5/32	0.11
900T-188-TH	5 1/2	3/16	0.19
900T-219-TH	5 1/2	7/32	0.23
900T-250-TH	7 1/4	1/4	0.28
900T-313-TH	7 1/4	5/16	0.39
900T-375-TH	7 1/4	3/8	0.51

Features

- Comfort grip handle for durability and flexibility in all types of work applications
- Black oxide tips prevent chipping of chrome to reduce possible contamination at work location
- For use with optional WTHUNIRET1 Retractable Lanyard



900T-250-TH

TOOLS@HEIGHT

WRENCH RETAINERS/HEX KEY/ TORQUE WRENCH

Snap-on INDUSTRIAL BRANDS



TOOLS@HEIGHT SLUGGING WRENCH RETAINERS

Product Code	Stud Size	Length	C	D
SWR-24	3/8	1 29/32	1 15/16	1 3/4
SWR-28	7/8	2	2 3/16	1 29/32
SWR-32	1	2 1/8	2 1/2	2 1/32
SWR-36	1 1/8	2 1/4	2 1/2	2 5/32
SWR-40	1 1/4	2 3/8	2 7/8	2 9/32
SWR-44	1 3/8	2 15/32	3 1/8	2 3/8
SWR-48	1 1/2	2 5/8	3 1/8	2 1/2
SWR-52	1 5/8	2 3/4	3 5/8	2 21/32
SWR-56	1 3/4	2 7/8	3 7/8	2 3/4
SWR-60	1 7/8	3	4 1/2	2 7/8

Features

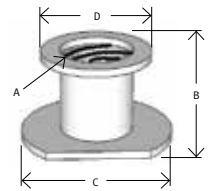
- SWR-SET includes one of each retainer in a plastic box.
- Retainers feature attachment point to prevent drop during use.
- Slugging Wrench Retainers thread onto the end of the stud over the slugging wrench to ensure the wrench stays affixed to the fastener
- A spring loaded plate allows for easy adjustment of the wrench without having to unscrew the retainer.
- Increased productivity and safer operation by eliminating the need for a second worker to hold and slugging wrench in place
- Available in 10 sizes, marked with stud sizes (not hex sizes)
- Configured to work with offset and straight handle slugging wrenches



SWR-52



SWR-24



SWR-SET



TOOLS@HEIGHT FOLDING HEX KEY SETS

SAE and Metric

Product Code	WS-45-TH		WS-46-TH		MWS-47-TH	
	8		9		7	
Number of Pieces	Hex Size (Inches)	Key Length (Inches)	Hex Size (Inches)	Key Length (Inches)	Includes Hex Size (MM)	Key Length (Inches)
	.050	1 1/4	5/64	1 1/2	1.5	1 3/8
	1/16	1 3/8	3/32	1 9/16	2	1 1/2
	5/64	1 7/16	7/64	1 11/16	2.5	1 5/8
	3/32	1 9/16	1/8	1 15/16	3	1 3/4
	7/64	1 5/8	9/64	2	4	2
	1/8	1 11/16	5/32	2 1/4	5	2 1/4
	9/64	1 13/16	3/16	2 1/2	6	2 1/2
	5/32	2	7/32	2 5/8		
			1/4	2 7/8		



WS-45-TH

Features

- Steel case is chrome plated to resist corrosion.
- Keys are black oxide finish.
- Convenient item for pocket or tool box.
- Modified to prevent disassembly during use.



TOOLS@HEIGHT METAL HANDLE CLICK TYPE TORQUE WRENCHES - DUAL SCALE

Metal Handle Dual Scale. The metal handle series offers the user a rugged, industrial strength torque wrench able to withstand the rigors of professional use. Handles are lightly knurled for a tough, non-slip grip. There are 21 models of metal handle micrometer adjustable torque wrenches available.

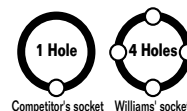
Product Code	Drive Size	English Range	Incr.	Num Range	Incr.	A in.	B in.	C in.	D in.	Wt. Lbs.
2503MFRMH-TH	1/2"	30-250 ft. lb.	1	47-332 Nm	1.4	24.40	1.70	1.40	1.40	4.73

Features

- Dual scale, calibrated dual direction
- Positive lock with spring loaded pull down lock ring
- Fast, accurate and easy to set
- Easy-to-read laser marked scales
- Most feature quick release buttons which provide good socket retention as well as easy socket removal
- Accuracy: ± 3% CW ± 4% CCW of indicated value, CW, from 20% to 100% of full scale
- Individually serialized with matching certificate of calibration traceable to N.I.S.T.



2503MFRMH-TH



Competitor's socket Williams' socket

Williams T@H sockets, extensions, and adaptors feature a locking hole on all four sides, not just one. Williams T@H ratchets and drive tools feature a locking pin which mates with the side lock hole for positive retention. This reduces the risk of misaligning the socket that typical competitor's sockets with just one side hole create.

Release pin with WTHPRT - Pin Release Tool for William's Square Drive Tools

Do not use quick release tools with locking collars or push button release. These tools can be disengaged inadvertently.



WTHPRT



Be sure to use a lanyard that has more weight capacity than the tool you are attaching because drop forces are greater than actual tool weight.



M-52EHA-TH



MB-52EHA-TH

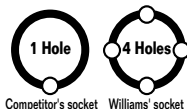


M-115-TH



30210-TH

30206-TH



Competitor's socket

Williams' socket

Williams T@H sockets, extensions, and adaptors feature a locking hole on all four sides, not just one. Williams T@H ratchets and drive tools feature a locking pin which mates with the side lock hole for positive retention. This reduces the risk of misaligning the socket that typical competitor's sockets with just one side hole create.

Release pin with WTHPRT - Pin Release Tool for William's Square Drive Tools

Do not use quick release tools with locking collars or push button release. These tools can be disengaged inadvertently.



WTHPRT



TOOLS@HEIGHT 1/4" DRIVE ENCLOSED HEAD RATCHETS

Sealed Narrow Head Design, Chrome and Black Industrial Finish

Product Code	Description	Length (Inches)	Number of Teeth	Weight (lbs)
M-52EHA-TH	Chrome Finish Enclosed Head Ratchet	5 1/4	36	0.00
MB-52EHA-TH	Black Industrial Finish Enclosed Head Ratchet	5 1/4	36	0.21

Fed. Spec: ANSI B107.10M



Features

- Enclosed head is sealed to prevent dust, dirt, and liquids from entering head, preserving internal lubrication.
- Forged one-piece ratchet provide strength and safety for industrial applications.
- 36 tooth gear with 10 degree of engagement allows engagement in tight working areas.
- Nickel/Chrome plating provides increase protection from rust and corrosion.
- Chrome finish models feature mirror-like exterior that can be easily cleaned after each use.
- Single Pawl ratchet design:
- Designed for tighter tolerances between pawl and gear which reduces metal fatigue and slippage under load.
- Does not require as many working parts, reducing possible breakage and parts to repair.
- Easy access reverse lever allows user to change working direction quickly and easily with only one hand.



TOOLS@HEIGHT 1/4" DRIVE EXTENSIONS

High-Polished Chrome Finish

Product Code	Description	Length (Inches)	Weight (lbs.)
M-102-TH	Extension	2	.06
M-104-TH	Extension	4	.11
M-115-TH	Extension	6	.15
M-140A-TH	U-Joint		.11

Fed. Spec: ANSI B107.10M



Features

- Chrome plating provides increased protection from rust and corrosion.
- Flexible extension is designed for low torque applications in limited access areas.
- Ball and spring socket retention.



TOOLS@HEIGHT 1/4" DRIVE SHALLOW SOCKETS, 12 POINT, SAE

High-Polished Chrome Finish

Product Code	Size (Inches)	OAL (Inches)	A Drive End Diameter (Inches)	B Working End Diameter (Inches)	C Broach Depth (Inches)	D Clearance Depth (Inches)	E Bolt Clearance Diameter (Inches)	F Bolt Nose Length (Inches)	Weight (lbs)
30206-TH	3/16	1	15/32	5/16	9/32	19/32	3/16	1/2	0.03
30207-TH	7/32	1	15/32	11/32	5/16	19/32	7/32	1/2	0.03
30208-TH	1/4	1	15/32	3/8	9/16	19/32	7/32	1/2	0.03
30209-TH	9/32	1	15/32	7/16	5/16	19/32	1/4	1/2	0.03
30210-TH	5/16	1	15/32	15/32	5/16	19/32	1/4	-	0.03
30211-TH	11/32	1	1/2	1/2	5/16	19/32	11/32	-	0.04
30212-TH	3/8	1	9/16	9/16	11/32	19/32	3/8	-	0.04
30214-TH	7/16	1	5/8	5/8	7/16	19/32	7/16	-	0.05
30216-TH	1/2	1	11/16	11/16	7/16	19/32	1/2	-	0.06
30218-TH	9/16	1	3/4	3/4	7/16	19/32	17/32	-	0.07

Fed. Spec: ANSI B107.1

Features

- SUPERTORQUE® lobular openings for greater turning power without deforming the fastener.
- Designed for maximum engagement on both 6 and 12 point fasteners.

Any tool that weighs more than 5 pounds should be attached to an anchor point such as a work platform or utility bucket rather than the operator.



TOOLS@HEIGHT 1/4" DRIVE DEEP SOCKETS, 12 POINT, SAE

High-Polished Chrome Finish

Product Code	Size (Inches)	A OAL (Inches)	B Drive End Diameter (Inches)	C Working End Diameter (Inches)	D Broach Depth (Inches)	E Bolt Clearance Depth (Inches)	F Bolt Clearance Diameter (Inches)	Nose Length (Inches)	Weight (lbs)
30406-TH	3/16	1 3/32	15/32	5/16	5/16	1 5/16	1/8	1 1/32	0.04
30407-TH	7/32	1 3/32	15/32	11/32	3/8	1 5/16	3/16	15/16	0.05
30408-TH	1/4	1 3/32	15/32	7/16	13/16	1 11/32	7/32	1 1/32	0.05
30409-TH	9/32	1 3/32	15/32	7/16	25/32	1 11/32	1/4	31/32	0.05
30410-TH	5/16	1 3/32	15/32	15/32	13/16	1 5/16	9/32	-	0.05
30411-TH	11/32	1 3/32	1/2	1/2	23/32	1 5/16	9/32	-	0.07
30412-TH	3/8	1 3/32	9/16	9/16	7/8	1 11/32	5/16	-	0.09
30414-TH	7/16	1 3/32	5/8	5/8	7/8	1 1/2	13/32	-	0.10
30416-TH	1/2	1 3/32	11/16	11/16	27/32	1 17/32	7/16	-	0.11
30418-TH	9/16	1 3/32	3/4	3/4	29/32	1 9/16	17/32	-	0.14

Fed. Spec: ANSI B107.1

Features

- SUPERTORQUE® lobular openings for greater turning power without deforming the fastener.
- Designed for maximum engagement on 12 point fasteners.



30410-TH 30406-TH



TOOLS@HEIGHT 1/4" DRIVE STANDARD LENGTH HEX BIT SOCKETS, SAE

High-Polished Chrome Finish

Product Code	Size (Inches)	Socket Length (Inches)	Socket Outside		Overall Length (Inches)	Bit Length (Inches)	Weight (lbs)
			Diameter (Inches)				
35000-TH	1/8	19/16	15/32		1 13/32	5/8	0.04
35001-TH	5/32	19/16	15/32		1 13/32	5/8	0.04
35002-TH	3/16	19/16	15/32		1 13/32	5/8	0.04
35003-TH	7/32	19/16	15/32		1 13/32	5/8	0.04
35004-TH	1/4	19/16	15/32		1 13/32	5/8	0.04
35005-TH	5/16	19/16	15/32		1 13/32	5/8	0.04

30902-TH 6 Piece Hex Bit Socket Set on Clip Rail .51 lbs

Contents Include:

Product Code	Size (Inches)	Product Code	Size (Inches)	Product Code	Size (Inches)
35000-TH	1/8	35002-TH	3/16	35004-TH	1/4
35001-TH	5/32	35003-TH	7/32	35005-TH	5/16

Features

- High-polished chrome finish socket cleans easily.



30902-TH



TOOLS@HEIGHT 1/4" DRIVE STANDARD LENGTH HEX BIT SOCKETS, METRIC

High-Polished Chrome Finish

Product Code	Size (MM)	Socket Length (Inches)	Socket Outside		Overall Length (Inches)	Bit Length (Inches)	Weight (lbs)
			Diameter (Inches)				
35070-TH	3	13/16	15/32		1 13/32	5/8	0.04
35071-TH	4	13/16	15/32		1 13/32	5/8	0.04
35072-TH	5	13/16	15/32		1 13/32	5/8	0.04
35073-TH	6	13/16	15/32		1 13/32	5/8	0.04
35074-TH	7	13/16	15/32		1 13/32	5/8	0.04
35075-TH	8	13/16	15/32		1 13/32	5/8	0.04



35072-TH

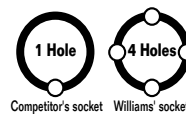
30904-TH 6 Piece Hex Bit Socket Set on Clip Rail .51 lbs

Contents Include:

Product Code	Size (MM)	Product Code	Size (MM)	Product Code	Size (MM)
35070-TH	3	35072-TH	5	35074-TH	7
35071-TH	4	35073-TH	6	35075-TH	8

Features

- High-polished chrome finish socket cleans easily.



Competitor's socket Williams' socket

Williams T@H sockets, extensions, and adaptors feature a locking hole on all four sides, not just one. Williams T@H ratchets and drive tools feature a locking pin which mates with the side lock hole for positive retention. This reduces the risk of misaligning the socket that typical competitor's sockets with just one side hole create.

Release pin with WTHPRT - Pin Release Tool for William's Square Drive Tools

Do not use quick release tools with locking collars or push button release. These tools can be disengaged inadvertently.



WTHPRT



Be sure to use a lanyard that has more weight capacity than the tool you are attaching because drop forces are greater than actual tool weight.



TOOLS@HEIGHT 3/8" DRIVE ENCLOSED HEAD RATCHETS

Williams® Sealed Narrow Head Design, Chrome and Black Industrial Finish

Product Code	Description	Length (Inches)	Number of Teeth	Weight (lbs)
BB-52EHA-TH	Black Industrial Finish Enclosed Head Ratchet	8	36	.76
B-52EHA-TH	Chrome Finish Enclosed Head Ratchet	8	36	.76
B-52EHLA-TH	Chrome Finish Enclosed Head Ratchet, Long	10 1/4	36	.87

Fed. Spec: ANSI B107.10M



Features

- Enclosed head is sealed to prevent dust, dirt, and liquids from entering head, preserving internal lubrication.
- Forged one-piece ratchet provide strength and safety for industrial applications.
- Smooth comfort-grip handle permits all-day use without gloves.
- 36 tooth gear with 10 degree of engagement allows engagement in tight working areas.
- Nickel/Chrome plating provides increase protection from rust and corrosion.
- Chrome finish models feature mirror-like exterior that can be easily cleaned after each use.
- Single Pawl ratchet design:
 - 1) Designed for tighter tolerances between pawl and gear which reduces metal fatigue and slippage under load.
 - 2) Does not require as many working parts, reducing possible breakage and parts to repair.
- Easy access reverse lever allows user to change working direction quickly and easily with only one hand.



TOOLS@HEIGHT 3/8" DRIVE EXTENSIONS AND ACCESSORIES

High-Polished Chrome Finish

Product Code	Description	Length (Inches)	Weight (lbs)
B-108-TH	Extension	3	.19
B-110-TH	Extension	6	.34
B-115-TH	Extension	11	.61
B-118-TH	Extension	18	.93
B-140A-TH	Universal Joint	2	.15
B-70-TH	Ratchet Spinner Disk	1 1/4	.14

Fed. Spec: ANSI B107.10M



Features

- Chrome plating provides increased protection from rust and corrosion.
- Flexible extension is designed for low torque applications in limited access areas.
- Ball and spring socket retention.
- Spinner disk is ideal for fast turn down of fasteners.



TOOLS@HEIGHT 3/8" DRIVE HANDLE

Knurled Handle, High-Polished Chrome Finish

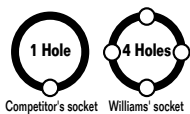
Product Code	Description	Length (Inches)	Weight (lbs)
B-40A-TH	Flex Handle	8 9/16	.67

Fed. Spec: ANSI B107.10M



Features

- Chrome plating provides increased protection from rust and corrosion.
- Drive handles provide extra leverage with greater strength than ratchets.



Williams T@H sockets, extensions, and adaptors feature a locking hole on all four sides, not just one. Williams T@H ratchets and drive tools feature a locking pin which mates with the side lock hole for positive retention. This reduces the risk of misaligning the socket that typical competitor's sockets with just one side hole create.



Release pin with WTHPRT – Pin Release Tool for William's Square Drive Tools

Do not use quick release tools with locking collars or push button release. These tools can be disengaged inadvertently.



Any tool that weighs more than 5 pounds should be attached to an anchor point such as a work platform or utility bucket rather than the operator.



TOOLS@HEIGHT 3/8" DRIVE SHALLOW SOCKETS, 12 POINT, SAE

High-Polished Chrome Finish

Product Code	Size (Inches)	A		B		C		D		E		F		Weight (lbs.)
		OAL (Inches)	Drive End Diameter (Inches)	Working End Diameter (Inches)	Broach Depth (Inches)	Bolt Clearance Depth (Inches)	Bolt Clearance Diameter (Inches)	Nose Length (Inches)						
31208-TH	1/4	1	1 1/16	7/16	1 1/32	9/16	7/32	1 1/32	17/32	0.04				
31210-TH	5/16	1	1 1/16	15/32	3/8	17/32	1/4	17/32	0.05					
31212-TH	3/8	1	1 1/16	9/16	3/8	1/2	9/32	17/32	0.05					
31214-TH	7/16	1	1 1/16	5/8	1 1/32	17/32	13/32	17/32	0.05					
31216-TH	1/2	1	3/4	3/4	13/32	19/32	7/16	-	0.07					
31218-TH	9/16	1 1/16	25/32	25/32	17/32	5/8	17/32	-	0.08					
31220-TH	5/8	1 1/16	7/8	7/8	19/32	1 1/16	19/32	-	0.09					
31222-TH	1 1/16	1 1/16	15/16	15/16	1/2	1 1/16	2 1/32	-	0.11					
31224-TH	3/4	1 1/8	1	1	9/16	23/32	23/32	-	0.15					
31226-TH	13/16	1 1/8	1 1/8	1 1/8	9/16	23/32	25/32	-	0.17					
31228-TH	7/8	1 7/32	1 3/16	1 3/16	2 1/32	19/16	2 1/32	-	0.21					
31230-TH	15/16	1 7/32	1 1/4	1 1/4	2 1/32	19/16	2 1/32	-	0.23					
31232-TH	1	1 7/32	1 5/16	1 5/16	1 1/16	13/16	3 1/32	-	0.26					

Fed. Spec: ANSI B107.1

Features

- SUPERTORQUE® lobular openings for greater turning power without deforming the fastener.
- Designed for maximum engagement on 12 point fasteners.



31216-TH

31208-TH



TOOLS@HEIGHT 3/8" DRIVE DEEP SOCKETS, 12 POINT, SAE

High-Polished Chrome Finish

Product Code	Size (Inches)	A		B		C		D		E		F		Weight (lbs)
		OAL (Inches)	Drive End Diameter (Inches)	Working End Diameter (Inches)	Broach Depth (Inches)	Bolt Clearance Depth (Inches)	Bolt Clearance Diameter (Inches)	Nose Length (Inches)						
31408-TH	1/4	2 1/2	1 1/16	7/16	1 11/16	7/32	1 1/16	1 1/16	0.11					
31410-TH	5/16	2 1/2	1 1/16	15/32	3/8	1 11/16	5/16	1 1/16	0.11					
31412-TH	3/8	2 1/2	1 1/16	9/16	3/8	1 11/16	3/8	1 1/16	0.12					
31414-TH	7/16	2 1/2	1 1/16	5/8	1 11/16	1 1/16	7/16	1 1/16	0.12					
31416-TH	1/2	2 1/2	3/4	3/4	13/32	1 11/32	15/32	-	0.15					
31418-TH	9/16	2 1/2	25/32	25/32	17/32	1 9/16	17/32	-	0.18					
31420-TH	5/8	2 1/2	7/8	7/8	19/32	1 9/16	19/32	-	0.21					
31422-TH	1 1/16	2 1/2	15/16	15/16	1/2	1 11/16	2 1/32	-	0.25					
31424-TH	3/4	2 1/2	1	1	9/16	1 11/16	23/32	-	0.27					
31426-TH	13/16	2 1/2	1 1/8	1 1/8	9/16	2 1/32	25/32	-	0.34					
31428-TH	7/8	2 1/2	1 3/16	1 3/16	2 1/32	2 1/32	27/32	-	0.38					
31430-TH	15/16	2 1/2	1 1/4	1 1/4	2 1/32	2 1/32	27/32	-	0.44					
31432-TH	1	2 1/2	1 5/16	1 5/16	1 1/16	2	3 1/32	-	0.49					

Fed. Spec: ANSI B107.1

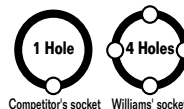
Features

- SUPERTORQUE® lobular openings for greater turning power without deforming the fastener.
- Designed for quick engagement on both 6 and 12 point fasteners.



31416-TH

31408-TH



Competitor's socket Williams' socket

Williams T@H sockets, extensions, and adaptors feature a locking hole on all four sides, not just one. Williams T@H ratchets and drive tools feature a locking pin which mates with the side lock hole for positive retention. This reduces the risk of misaligning the socket that typical competitor's sockets with just one side hole create.

Release pin with WTHPRT - Pin Release Tool for William's Square Drive Tools

Do not use quick release tools with locking collars or push button release. These tools can be disengaged inadvertently.



WTHPRT



Be sure to use a lanyard that has more weight capacity than the tool you are attaching because drop forces are greater than actual tool weight.



TOOLS@HEIGHT 3/8" DRIVE STANDARD LENGTH HEX BIT SOCKETS, SAE

High-Polished Chrome Finish



35100-TH

Product Code	Size (Inches)	Socket Length (Inches)	Socket Outside Diameter (Inches)	Overall Length (Inches)	Bit Length (Inches)	Weight (lbs.)
35100-TH	1/8	1 3/16	3/4	1 27/32	2 1/32	0.09
35101-TH	9/64	1 3/16	3/4	1 27/32	2 1/32	0.09
35102-TH	5/32	1 3/16	3/4	1 27/32	2 1/32	0.10
35103-TH	3/16	1 3/16	3/4	1 27/32	2 1/32	0.09
35104-TH	7/32	1 3/16	3/4	1 27/32	2 1/32	0.10
35105-TH	1/4	1 3/16	3/4	1 27/32	2 1/32	0.09
35106-TH	9/16	1 3/16	3/4	1 31/32	13/16	0.11
35107-TH	3/8	1 3/16	3/4	1 31/32	13/16	0.12

Features

- High-polished chrome finish socket cleans easily.



TOOLS@HEIGHT 3/8" DRIVE UNIVERSAL SOCKETS, 6 POINT, SAE

High-Polished Chrome Finish



31154-TH

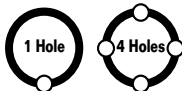
31142-TH

Product Code	Size (Inches)	OAL (Inches)	Drive End Diameter (Inches)	Open End Diameter (Inches)	Broach Depth (Inches)	Bolt Clearance		Nose Length (Inches)	Weight (lbs.)
						Depth (Inches)	Diameter (Inches)		
31142-TH	3/8	1 53/64	3/4	9/16	3/8	35/64	2 1/64	5/16	0.11
31144-TH	7/16	1 53/64	3/4	5/8	3/8	35/64	2 1/64	5/16	0.11
31146-TH	1/2	1 57/64	3/4	45/64	13/32	37/64	2 1/64	13/32	0.12
31148-TH	9/16	1 57/64	3/4	29/32	7/16	43/64	2 1/64	33/64	0.13
31150-TH	5/8	2	3/4	55/64	7/16	45/64	2 1/64	33/64	0.14
31152-TH	11/16	2 3/64	3/4	15/16	3/16	3/4	2 1/64	17/32	0.15
31154-TH	3/4	2 3/64	3/4	1 1/64	1/2	51/64	2 1/64	17/32	0.16

Fed. Spec: ANSI B107.1

Features

- Ideal for work in confined areas where fastener is inaccessible to standard sockets



Competitor's socket Williams' socket

Williams T@H sockets, extensions, and adaptors feature a locking hole on all four sides, not just one. Williams T@H ratchets and drive tools feature a locking pin which mates with the side lock hole for positive retention. This reduces the risk of misaligning the socket that typical competitor's sockets with just one side hole create.

Release pin with WTHPRT – Pin Release Tool for William's Square Drive Tools

Do not use quick release tools with locking collars or push button release. These tools can be disengaged inadvertently.



Any tool that weighs more than 5 pounds should be attached to an anchor point such as a work platform or utility bucket rather than the operator.



TOOLS@HEIGHT 1/2" DRIVE SCAFFOLDING RATCHET

Product Code	Description	Weight (lbs)	Product Code	Description
BS-62	Scaffolding Ratchet with out pry bar	2.55	BS-63BTIP	Hammer Tip
BS-63B	Scaffolding Ratchet with pry bar	2.74	BS-63BBAR	Pry Bar
			BS-63BRK	Repair Kit

Features

- 1/2" Drive with pinned 7/8" 6-point socket
- 36 tooth gear with 10 degree of engagement allows engagement in tight working areas
- Bronze hammer head reduces rebound
- Pry bar handle provide alignment option
- Socket feature SUPERTORQUE lobular opening for greater turning power without deforming the fastener
- Easy access reversing lever allows user to change working direction quickly and easily with only one hand
- Tethering device attached to handle



TOOLS@HEIGHT 1/2" DRIVE ENCLOSED HEAD RATCHETS

Williams® Sealed Narrow Head Design, Chrome and Black Industrial Finish

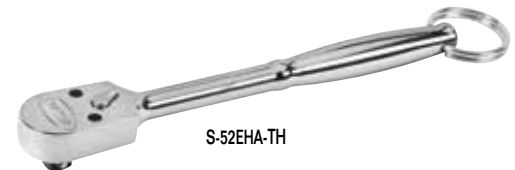
Product Code	Description	Length (Inches)	Number of Teeth	Weight (lbs)
S-52EHA-TH	Chrome Finish Enclosed Head Ratchet	10 1/4	36	1.61
S-52EHLA-TH	Chrome Finish Enclosed Head Ratchet, Long	15	36	1.94
SB-52EHA-TH	Black Industrial Finish Enclosed Head Ratchet	10 1/4	36	1.61

Fed. Spec: ANSI B107.10M



Features

- Enclosed head is sealed to prevent dust, dirt, and liquids from entering head, preserving internal lubrication.
- Forged one-piece ratchet provide strength and safety for industrial applications.
- Smooth comfort-grip handle permits all-day use without gloves.
- 36 tooth gear with 10 degree of engagement allows engagement in tight working areas.
- Nickel/Chrome plating provides increase protection from rust and corrosion.
- Chrome finish models feature mirror-like exterior that can be easily cleaned after each use.



TOOLS@HEIGHT 1/2" DRIVE HANDLES

Knurled Handle, Chrome and Black Industrial Finish

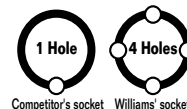
Product Code	Description	Length (Inches)	Weight (lbs)
S-40AA-TH	Chrome Flex Handle	10 13/16	1.34
S-41AA-TH	Chrome Flex Handle	15 1/2	2.07
BS-41AA-TH	Black Industrial Finish Flex Handle	15 1/2	2.06

Fed. Spec: ANSI B107.10M



Features

- Chrome plating provides increased protection from rust and corrosion.
- Drive handles provide extra leverage with greater strength than ratchets.
- Speeder handle is ideal for fast turn down of fasteners.



Competitor's socket Williams' socket

Williams T@H sockets, extensions, and adaptors feature a locking hole on all four sides, not just one. Williams T@H ratchets and drive tools feature a locking pin which mates with the side lock hole for positive retention. This reduces the risk of misaligning the socket that typical competitor's sockets with just one side hole create.

Release pin with WTHPRT - Pin Release Tool for William's Square Drive Tools

Do not use quick release tools with locking collars or push button release. These tools can be disengaged inadvertently.



Be sure to use a lanyard that has more weight capacity than the tool you are attaching because drop forces are greater than actual tool weight.



S-140A-TH



S-121P-TH



TOOLS@HEIGHT 1/2" DRIVE EXTENSIONS AND ACCESSORIES

High-Polished Chrome Finish

Product Code	Description	Length (Inches)	Weight (lbs.)
S-102P-TH	Extension	2	.38
S-110P-TH	Extension	5	.50
S-115P-TH	Extension	10	.93
S-121P-TH	Extension	20	1.76
S-140A-TH	Universal Joint	2 1/16	.29

Fed. Spec: ANSI B107.10M

Features

- Chrome plating provides increased protection from rust and corrosion.



TOOLS@HEIGHT 1/2" DRIVE SHALLOW 12 POINT SOCKETS, SAE

High-Polished Chrome Finish



32220-TH

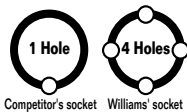
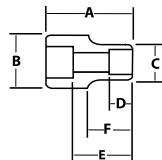
32212-TH

Product Code	Size (Inches)	OAL (Inches)	A		B		C		D		E		F		Weight (lbs.)
			Drive End Diameter (Inches)	Working End Diameter (Inches)	Broach Depth (Inches)	Bolt Clearance Depth (Inches)	Bolt Clearance Diameter (Inches)	Nose Length (Inches)							
32212-TH	3/8	1 1/2	7/8	5/8	1/2	25/32	5/16	23/32	0.11						
32214-TH	7/16	1 1/2	7/8	1 1/16	1/2	27/32	13/32	1 1/16	0.12						
32216-TH	1/2	1 1/2	7/8	3/4	17/32	27/32	15/32	23/32	0.12						
32218-TH	9/16	1 1/2	7/8	13/16	17/32	27/32	17/32	1 1/16	0.12						
32220-TH	5/8	1 1/2	29/32	29/32	17/32	27/32	9/16	-	0.14						
32222-TH	1 1/16	1 1/2	31/32	31/32	9/16	27/32	21/32	-	0.16						
32224-TH	3/4	1 1/2	1	1	3/4	29/32	23/32	-	0.19						
32226-TH	13/16	1 1/2	1 1/8	1 1/8	25/32	31/32	25/32	-	0.21						
32228-TH	7/8	1 5/8	1 3/16	1 3/16	7/8	1 1/32	7/8	-	0.25						
32230-TH	15/16	1 5/8	1 1/4	1 1/4	7/8	1 3/32	29/32	-	0.29						
32232-TH	1	1 5/8	1 3/16	1 5/16	7/8	1 3/16	31/32	-	0.32						
32234-TH	1 1/16	1 3/4	1 3/16	1 7/16	31/32	1 9/32	1 1/16	-	0.40						
32236-TH	1 1/8	1 3/4	1 1/2	1 1/2	31/32	1 9/16	1 5/32	-	0.44						
32238-TH	1 3/16	1 3/4	1 9/16	1 9/16	31/32	1 9/16	1 1/4	-	0.50						
32240-TH	1 1/4	1 3/4	1 11/16	1 21/32	31/32	1 5/16	1 1/4	-	0.55						
32242-TH	1 5/16	1 47/64	1 1/2	1 47/64	59/64	59/64	1 3/16	-	0.56						
32244-TH	1 3/8	1 47/64	1 37/64	1 53/64	59/64	59/64	1 17/64	-	0.64						
32246-TH	1 7/16	1 31/32	1 21/32	1 57/64	1 1/16	1 1/16	1 11/32	-	0.66						
32248-TH	1 1/2	1 31/32	1 11/16	1 31/32	1 1/8	1 1/2	1 1/8	-	0.72						

Fed. Spec: ANSI B107.1

Features

- SUPERTORQUE® lobular openings for greater turning power without deforming the fastener.
- Designed for quick engagement on both 6 and 12 point fasteners.



Competitor's socket Williams' socket

Williams T@H sockets, extensions, and adaptors feature a locking hole on all four sides, not just one. Williams T@H ratchets and drive tools feature a locking pin which mates with the side lock hole for positive retention. This reduces the risk of misaligning the socket that typical competitor's sockets with just one side hole create.

Release pin with WTHPRT - Pin Release Tool for William's Square Drive Tools

Do not use quick release tools with locking collars or push button release. These tools can be disengaged inadvertently.



Any tool that weighs more than 5 pounds should be attached to an anchor point such as a work platform or utility bucket rather than the operator.



TOOLS@HEIGHT 1/2" DRIVE DEEP SOCKETS, 12 POINT, SAE

High-Polished Chrome Finish

Product Code	Size (Inches)	A OAL (Inches)	B Drive End Diameter (Inches)	C Working End Diameter (Inches)	D Broach Depth (Inches)	E Bolt Clearance Depth (Inches)	Bolt Clearance Diameter (Inches)	F Nose Length (Inches)	Weight (lbs.)
32412-TH	3/8	3	7/8	5/8	1	2 7/32	1 1/32	1 15/32	0.23
32414-TH	7/16	3 1/32	7/8	1 1/16	1 1/8	2 9/32	1 3/32	1 15/32	0.24
32416-TH	1/2	3 1/32	7/8	3/4	3 1/32	2 7/32	7/16	1 15/32	0.24
32418-TH	9/16	3 1/32	7/8	13/16	1 3/32	2 7/32	1/2	1 15/32	0.26
32420-TH	5/8	3 1/32	29/32	29/32	1 3/16	2 3/16	9/16	-	0.27
32422-TH	1 1/16	3 1/32	15/16	15/16	1 3/8	2 3/16	2 1/32	-	0.27
32424-TH	3/4	3 1/32	1 1/16	1 1/16	1 1/4	2 1 1/2	2 3/32	-	0.27
32426-TH	13/16	3 1/32	1 1/8	1 1/8	1 15/32	2 3/16	3/4	-	0.41
32428-TH	7/8	3 1/32	1 3/16	1 3/16	1 13/32	2 1/4	2 7/32	-	0.45
32430-TH	15/16	3 1/32	1 1/4	1 1/4	1 13/32	2 5/32	2 9/32	-	0.50
32432-TH	1	3 1/32	1 11/32	1 11/32	1 13/32	2 5/32	1 9/16	-	0.58
32434-TH	1 1/16	3 1/32	1 13/32	1 13/32	1 3/8	2 1 1/2	1 1/32	-	0.64
32436-TH	1 1/8	3 1/32	1 1/2	1 1/2	1 7/16	2 3/8	1 1/16	-	0.75
32438-TH	1 3/16	3 1/32	1 9/16	1 9/16	1 7/16	2 3/16	1 1/16	-	0.81
32440-TH	1 1/4	3 1/32	1 21/32	1 21/32	1 7/16	2 3/16	1 1/16	-	0.88
32442-TH	1 5/16	3 1/32	1 47/64	1 47/64	1 3/8	2 1 1/4	1 3/16	-	0.98
32444-TH	1 3/8	3 1/32	1 59/64	1 59/64	1 3/8	2 1 1/4	1 7/64	-	1.12
32446-TH	1 7/16	3 1/32	1 57/64	1 57/64	1 3/8	2 1 1/4	1 11/32	-	1.19
32448-TH	1 1/2	3 1/32	1 15/16	1 31/32	1 7/16	2 3/16	1 1/16	-	1.38

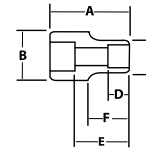
Fed. Spec: ANSI B107.1

Features

- SUPERTORQUE® lobular openings for greater turning power without deforming the fastener.
- Designed for quick engagement on both 6 and 12 point fasteners.



32420-TH 32412-TH



TOOLS@HEIGHT 1/2" DRIVE SHALLOW SOCKETS, 8 POINT, SAE

High-Polished Chrome Finish

Product Code	Size (Inches)	A OAL (Inches)	B Drive End Diameter (Inches)	C Working End Diameter (Inches)	D Broach Depth (Inches)	E Bolt Clearance Depth (Inches)	Bolt Clearance Diameter (Inches)	F Nose Length (Inches)	Weight (lbs.)
ST-812-TH	3/8	1 1/2	7/8	23/32	5/16	2 7/32	5/16	7/8	0.14
ST-814-TH	7/16	1 1/2	7/8	13/16	3/8	2 7/32	5/16	7/8	0.13
ST-816-TH	1/2	1 1/2	29/32	29/32	13/32	2 7/32	1 1/32	-	0.16
ST-818-TH	9/16	1 1/2	3 1/32	3 1/32	7/16	2 7/32	7/16	-	0.18
ST-820-TH	5/8	1 1/2	1 1/16	1 1/16	1/2	2 7/32	7/16	-	0.24
ST-822-TH	1 1/16	1 1/2	1 3/16	1 3/16	1/2	2 7/32	1 7/32	-	0.37
ST-824-TH	3/4	1 1/2	1 9/32	1 9/32	9/16	13/16	23/32	-	0.37
ST-826-TH	13/16	1 5/8	1 7/16	1 7/16	9/16	3 1/32	2 7/32	-	0.49
ST-828-TH	7/8	1 3/4	1 1/2	1 1/2	5/8	1 1/16	1 5/16	-	0.53
ST-830-TH	15/16	1 13/16	1 5/8	1 5/8	1 1/16	1 1/8	1 1/32	-	0.63
ST-832-TH	1	1 15/16	1 1 1/16	1 1 1/16	1 1/16	1 1/4	1 1/32	-	0.78

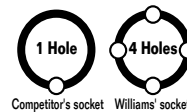
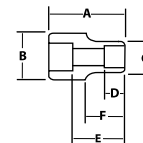
Fed. Spec: ANSI B107.1

Features

- SUPERTORQUE® lobular openings for greater turning power without deforming the fastener.
- 8 point sockets are designed for quick engagement on 4 point fasteners.



ST-812-TH



Competitor's socket Williams' socket

Williams T@H sockets, extensions, and adaptors feature a locking hole on all four sides, not just one. Williams T@H ratchets and drive tools feature a locking pin which mates with the side lock hole for positive retention. This reduces the risk of misaligning the socket that typical competitor's sockets with just one side hole create.

Release pin with WTHPRT - Pin Release Tool for William's Square Drive Tools

Do not use quick release tools with locking collars or push button release. These tools can be disengaged inadvertently.



Be sure to use a lanyard that has more weight capacity than the tool you are attaching because drop forces are greater than actual tool weight.

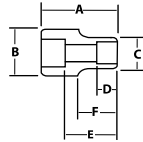


TOOLS@HEIGHT 1/2" DRIVE DEEP SOCKETS, 12 POINT, METRIC

High-Polished Chrome Finish



32820-TH



Product Code	Size (MM)	A OAL (Inches)	B Drive End Diameter (Inches)	C Working End Diameter (Inches)	D Broach Depth (Inches)	E Bolt Clearance Depth (Inches)	F Bolt Clearance Diameter (Inches)	Nose Length (Inches)	Weight (lbs)
32809-TH	9	3 1/4	29/32	19/32	5/16	2 15/32	11/32	2 19/32	0.22
32810-TH	10	3 1/4	29/32	19/32	5/16	2 15/32	11/32	2 19/32	0.22
32811-TH	11	3 1/4	29/32	11/16	5/16	2 15/32	13/32	2 19/32	0.22
32812-TH	12	3 1/4	29/32	23/32	13/32	2 15/32	7/16	2 19/32	0.23
32813-TH	13	3 1/4	29/32	29/32	3/8	2 15/32	15/32	2 19/32	0.24
32814-TH	14	3 1/4	29/32	27/32	3/8	2 15/32	15/32	2 19/32	0.24
32815-TH	15	3 1/4	29/32	7/8	3/8	2 11/32	15/32	-	0.24
32816-TH	16	3 1/4	29/32	29/32	9/16	2 11/32	15/32	-	0.27
32817-TH	17	3 1/4	31/32	31/32	9/16	2 11/32	15/32	-	0.31
32818-TH	18	3 1/4	1	1	13/16	2 11/32	15/32	-	0.34
32819-TH	19	3 1/4	1 1/32	1 1/32	13/16	2 5/16	23/32	-	0.37
32820-TH	20	3 1/4	1 1/16	1 1/16	13/16	2 5/16	23/32	-	0.40
32821-TH	21	3 1/4	1 1/8	1 1/8	13/16	2 5/16	3/4	-	0.41
32822-TH	22	3 1/4	1 3/16	1 3/16	13/16	2 5/16	25/32	-	0.46
32823-TH	23	3 1/4	1 1/4	1 1/4	29/32	2 5/16	27/32	-	0.49
32824-TH	24	3 1/4	1 9/32	1 9/32	13/16	2 5/16	7/8	-	0.52
32825-TH	25	3 1/4	1 5/16	1 5/16	13/16	2 1/4	15/16	-	0.55
32826-TH	26	3 1/4	1 3/8	1 3/8	29/32	2 1/4	1	-	0.57
32827-TH	27	3 1/4	1 7/16	1 7/16	31/32	2 1/4	1	-	0.66
32828-TH	28	3 1/4	1 1/2	1 1/2	1	2 1/4	1 1/32	-	0.73
32829-TH	29	3 1/4	1 9/16	1 9/16	1 1/32	2 1/4	1 1/16	-	0.78
32830-TH	30	3 1/4	1 5/8	1 5/8	1 1/32	2 1/4	1 3/32	-	0.83
32832-TH	32	3 1/4	1 11/16	1 11/16	1 1/8	2 1/4	1 3/16	-	0.93
32836-TH	36	3 1/4	1 15/16	1 15/16	7/8	2 1/4	1 13/32	-	1.16

Fed. Spec: ANSI B107.5

32949-TH - 24 Piece 1/2" Drive Deep 12 Point Socket Set on Clip Rail 12.02 lbs.

Features

- SUPERTORQUE® lobular openings for greater turning power without deforming the fastener.
- Designed for quick engagement on both 6 and 12 point fasteners.



35274-TH



35212-TH



TOOLS@HEIGHT 1/2" DRIVE STANDARD LENGTH HEX BIT SOCKETS, SAE

High-Polished Chrome Finish

Product Code	Size (Inches)	Socket Length (Inches)	Socket Outside Diameter (Inches)	Overall Length (Inches)	Bit Length (Inches)	Weight (lbs)
35208-TH	1/4	1 1/16	29/32	2 13/32	27/32	0.17
35210-TH	5/16	1 1/16	29/32	2 13/32	27/32	0.17
35212-TH	3/8	1 7/16	29/32	2 13/32	27/32	0.19
35214-TH	7/16	1 7/16	29/32	2 13/32	27/32	0.22
35202-TH	1/2	1 19/32	7/8	2 13/32	27/32	0.26
35203-TH	9/16	1 19/32	1	2 13/32	27/32	0.33
35204-TH	5/8	1 19/32	1 1/16	2 13/32	27/32	0.39
35206-TH	3/4	1 19/32	1 3/16	2 13/32	27/32	0.51



TOOLS@HEIGHT 1/2" DRIVE STANDARD LENGTH HEX BIT SOCKETS, METRIC

High-Polished Chrome Finish

Product Code	Size (MM)	Socket Length (Inches)	Socket Outside Diameter (Inches)	Overall Length (Inches)	Bit Length (Inches)	Weight (lbs)
35274-TH	8	1 19/32	29/32	2 13/32	27/32	0.17
35275-TH	10	1 19/32	29/32	2 7/16	27/32	0.19
35276-TH	12	1 19/32	29/32	2 7/16	27/32	0.22
35277-TH	14	1 19/32	1	2 7/16	27/32	0.32
35278-TH	17	1 19/32	1 3/32	2 7/16	27/32	0.43
35279-TH	19	1 19/32	1 3/16	2 7/16	27/32	0.51

Features

- High-polished chrome finish socket cleans easily.

Any tool that weighs more than 5 pounds should be attached to an anchor point such as a work platform or utility bucket rather than the operator.



Williams T@H sockets, extensions, and adaptors feature a locking hole on all four sides, not just one. Williams T@H ratchets and drive tools feature a locking pin which mates with the side lock hole for positive retention. This reduces the risk of misaligning the socket that typical competitor's sockets with just one side hole create.

Release pin with WTHPRT - Pin Release Tool for William's Square Drive Tools

Do not use quick release tools with locking collars or push button release. These tools can be disengaged inadvertently.





TOOLS@HEIGHT 3/4" DRIVE INTEGRATED HANDLE RATCHETS

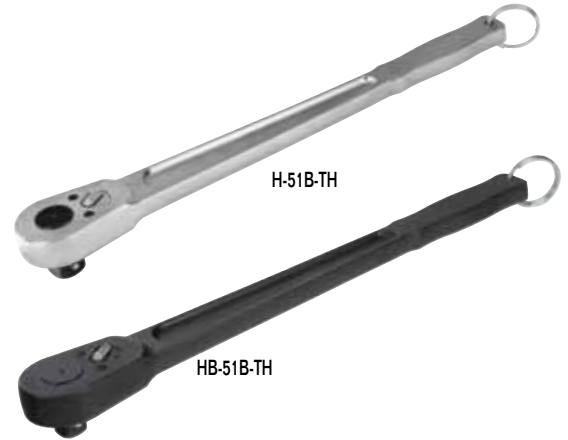
Chrome and Black Industrial Finish

Product Code	Description	Length (Inches)	Number of Teeth	Weight (lbs)
H-51B-TH	Chrome Finish Ratchet	20 1/2	24	6.04
HB-51B-TH	Black Industrial Finish Ratchet	20 1/2	24	6.04

Fed. Spec: ANSI B107.10M

Features

- Forged one-piece ratchet provide strength and safety for industrial applications.
- Smooth comfort-grip handle permits all-day use without gloves.



TOOLS@HEIGHT 3/4" DRIVE EXTENSIONS

Chrome and Black Industrial Finish

Product Code	Description	Length (Inches)	Weight (lbs)
H-104B-TH	Black Industrial Finish Drive Extension	3	0.73
H-110B-TH	Black Industrial Finish Drive Extension	8	1.70
H-110-TH	Chrome Finish Drive Extension	8	1.72
H-115-TH	Chrome Finish Drive Extension	16	3.25

Fed. Spec: ANSI B107.10M

Features

- Chrome plating provides increased protection from rust and corrosion.
- Ball and spring socket retention.



TOOLS@HEIGHT 3/4" DRIVE HANDLE

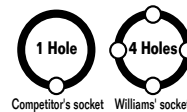
Chrome and Black Industrial Finish

Product Code	Description	Length (Inches)	Finish
H-41AA-TH	Flex Handle Breaker Bar, Knurled Grip	22 1/2	Chrome

Fed. Spec: ANSI B107.10M

Features

- Chrome plating provides increased protection from rust and corrosion.
- Drive handles provide extra leverage with greater strength than ratchets.
- Square drive slides on T-Handles for versatility.
- Flex handle flex drive swivels 110° in either direction.



Competitor's socket Williams' socket

Williams T@H sockets, extensions, and adaptors feature a locking hole on all four sides, not just one. Williams T@H ratchets and drive tools feature a locking pin which mates with the side lock hole for positive retention. This reduces the risk of misaligning the socket that typical competitor's sockets with just one side hole create.

Release pin with WTHPRT - Pin Release Tool for William's Square Drive Tools

Do not use quick release tools with locking collars or push button release. These tools can be disengaged inadvertently.



Be sure to use a lanyard that has more weight capacity than the tool you are attaching because drop forces are greater than actual tool weight.



TOOLS@HEIGHT 3/4" DRIVE SHALLOW 12 POINT SOCKETS, SAE

High-Polished Chrome Finish



33244-TH

33228-TH

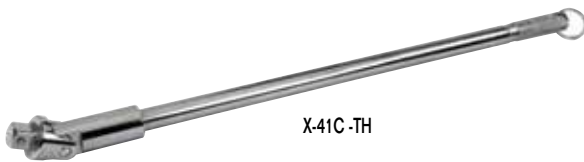
Product Code	Size (Inches)	A OAL (Inches)	B Drive End Diameter (Inches)	C Working End Diameter (Inches)	F Nose Length (Inches)	Weight (lbs)
33228-TH	7/8	1 15/16	1 7/16	1 1/4	35/64	0.46
33230-TH	15/16	2	1 7/16	1 3/8	5/8	0.49
33232-TH	1	2 1/16	1 7/16	1 7/16	5/8	0.49
33234-TH	1 1/16	2 1/16	1 7/16	1 1/2	7/8	0.49
33236-TH	1 1/8	2 1/16	1 1/2	1 9/16	7/8	0.54
33238-TH	1 3/16	2 1/8	1 1/2	1 11/16	15/16	0.60
33240-TH	1 1/4	2 3/16	1 1/2	1 3/4	15/16	0.64
33242-TH	1 9/16	2 3/16	1 1/2	1 13/16	1	0.69
33244-TH	1 3/8	2 1/4	1 5/8	1 7/8	1	0.83
33246-TH	1 7/16	2 1/4	1 5/8	1 31/32	1 7/64	0.90
33248-TH	1 1/2	2 3/8	1 3/4	2 1/16	1 7/64	1.01
33252-TH	1 5/8	2 1/2	1 3/4	2 3/16	1 3/16	1.17
33256-TH	1 3/4	2 9/16	1 13/16	2 5/16	1 1/4	1.37
33258-TH	1 13/16	2 11/16	1 13/16	2 3/8	1 1/4	1.37
33260-TH	1 7/8	2 3/4	1 7/8	2 1/2	1 11/32	1.57
33264-TH	2	2 13/16	1 7/8	2 11/16	1 13/32	1.64

Fed. Spec: ANSI B107.1



TOOLS@HEIGHT 1" DRIVE HANDLE

Chrome and Black Industrial Finish



X-41C-TH

Product Code	Description	Length (Inches)	Finish	Weight (lbs)
X-41C-TH	Flex Handle Breaker Bar, Knurled Grip	34 3/16	Chrome	10.93

Fed. Spec: ANSI B107.10M

Features

- Chrome plating provides increased protection from rust and corrosion.
- Drive handles provide extra leverage with greater strength than ratchets.
- Square drive slides on T-Handles for versatility.
- Flex handle flex drive swivels 110° in either direction.
- Spring and plunger socket retention.



TOOLS@HEIGHT 1" DRIVE RATCHET

Integrated Handle, Chrome Finish



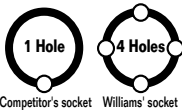
X-51B-TH

Product Code	Description	Length (Inches)	Number of Teeth	Weight (lbs)
X-51B-TH	Chrome Ratchet	20 1/8	24	6.25

Fed. Spec: ANSI B107.10M

Features

- Forged one-piece ratchet provide strength and safety for industrial applications.
- Smooth comfort-grip handle permits all-day use without gloves.
- 24 tooth gear with 15 degree of engagement allows engagement in tight working areas.
- Chrome finish with mirror-like exterior can be easily cleaned after each use.



Competitor's socket Williams' socket

Williams T@H sockets, extensions, and adaptors feature a locking hole on all four sides, not just one. Williams T@H ratchets and drive tools feature a locking pin which mates with the side lock hole for positive retention. This reduces the risk of misaligning the socket that typical competitor's sockets with just one side hole create.

Release pin with WTHPRT – Pin Release Tool for William's Square Drive Tools

Do not use quick release tools with locking collars or push button release. These tools can be disengaged inadvertently.



Any tool that weighs more than 5 pounds should be attached to an anchor point such as a work platform or utility bucket rather than the operator.



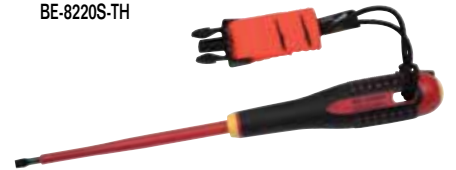
TOOLS@HEIGHT 1000V ERGO® SCREWDRIVERS

Three Component Handle with Black Oxide Tips

Product Code	Overall Length (Inches)	Blade Length (Inches)	Tip Width (Inches)	Weight (lbs)
SLOTTED				
BE-8220S-TH	9	4	1/8	.089
BE-8040S-TH	8 3/4	4	5/32	.136
BE-8050S-TH	8 3/4	4	7/32	.089
PHILLIPS				
BE-8610S-TH	8	3 5/32	1	.141
BE-8620S-TH	8 3/4	4	2	.241

Features

- The three component ergonomically designed handle provides comfort and maximum grip even with oily hands.
- For use with optional WTHUNIRET1 retractable lanyard



TOOLS@HEIGHT SLOTTED SCREWDRIVERS

Premium Comfort Grip Handles and Blades

Product Code	Overall Length (Inches)	Blade Length (Inches)	Tip Width (Inches)	Weight (lbs)
SDS-62-TH	3 7/8	1 1/2	3/16	0.09
SDR-22-TH	6 1/8	3	3/16	0.17
SDR-24-TH	7 7/8	4	1/4	0.26
SDR-26-TH	10 11/16	6	5/16	0.38
SDR-28-TH	12 11/16	8	3/8	0.59
SDR-30-TH	14 3/4	10	7/16	0.66

Features

- Comfort-grip handle with thumb stop allow for added turning power without discomfort or slippage.
- Hi-polish chrome blades prevent corrosion and can be easily cleaned.
- Vapor-blasted tips grip fasteners and prevent chipping, extending tool life.
- Blades are made from special alloy steel for extra strength.



Rotating screwdriver tabs –

tab is located for secure retention and allow full use of the screwdriver handle

- Stainless steel tab is corrosion resistant
- Tab rotates freely 360° so the lanyard does not wrap around the users hand
- Nylon bushing has a shoulder so the tab will not bind between the handle and shank bolster



Be sure to use a lanyard that has more weight capacity than the tool you are attaching because drop forces are greater than actual tool weight.



**TOOLS@HEIGHT PHILLIPS® SCREWDRIVERS
W/ROUND BLADES**

Premium Comfort Grip Handles and Blades

Product Code	Overall Length (Inches)	Blade Length (Inches)	Point Size	Weight (lbs)
SDP-2-ST-TH	3 7/8	1 1/2	2	0.10
SDP-1-3-TH	6 1/4	3	1	0.15
SDP-2-4-TH	7 15/16	4	2	0.25
SDP-2-8-TH*	12	8	2	0.30
SDP-3-6-TH	10 1/2	6	3	0.39
SDP-4-6-TH	10 3/4	6	4	0.53

* Does not have Bolster



Features

- Comfort-grip handle with thumb stop allow for added turning power without discomfort or slippage.
- Hi-polish chrome blades prevent corrosion and can be easily cleaned.
- Vapor-blasted tips grip fasteners and prevent chipping, extending tool life.
- Blades are made from special alloy steel for extra strength.



SDP-2-4-TH



SDP-2-ST-TH



TOOLS@HEIGHT NUTDRIVERS, SAE

Cushion Grip Handle

Product Code	Overall Length (Inches)	Blade Length (Inches)	Size (Inches)	Weight (lbs)
24401-TH	7	3	3/16	0.21
24403-TH	7	3	1/4	0.22
24405-TH	7	3	5/16	0.23
24407-TH	7	3	11/32	0.24
24409-TH	7	3	3/8	0.25
24411-TH	7	3	7/16	0.26
24413-TH	7	3	1/2	0.28

Features

- Hollow shaft accommodates long bolts or studs.
- Precision machined socket end.
- Cushion grip handle for comfort.
- Size imprinted on color coded ends for easy identification.



24401-TH



TOOLS@HEIGHT ERGO® ADJUSTABLE JOINT PLIERS

True Ergonomic Handles with Bi-Molded Grips

Product Code	Overall Length (Inches)	Maximum Jaw Opening (Inches)	Tip Width (Inches)	Weight (lbs)
8223-TH	8	1 1/2	9/32	0.62
8224-TH	10	1 3/4	5/16	0.75
8225-TH	12	2 5/32	3/8	1.25
8226-TH	16	3	7/16	2.07

Features

- Comfortable ergonomic two-component handles which combines durability and a secure non-slip grip.
- Hardened jaws and teeth for exceptionally tough gripping surface.
- One-button setting provides fast and secure jaw width changes with a single touch of the thumb.
- Wide, deep opening jaws have flat and pipe grip jaw so one pair of pliers can be used for more jobs.



8224-TH



TOOLS@HEIGHT PHILLIPS® UTILITY SUPERJOINT PLIERS

Double-Dipped Plastic Handles

Features	Overall Length (Inches)	Maximum Opening (Inches)	Tip Width (Inches)	Weight (lbs)
PL-1519C-TH	5	1/2	3/16	0.22
PL-1520C-TH	10	1 1/2	5/16	0.92
PL-1523C-TH	12	2 5/8	1/2	1.50
PL-1524C-TH	16	4	1/2	2.78

Features

- Multiple parallel jaw positions are locked in to proper groove for superior non-slip performance.
- Serrated jaws for maximum gripping power.
- Polished heads resist rust and corrosion, extending the tool life.



PL-1520C-TH



TOOLS@HEIGHT COMBINATION SLIP-JOINT PLIERS

Double-Dipped Plastic Handles

Product Code	Overall Length (Inches)	Jaw Length (Inches)	Tip Width (Inches)	Weight (lbs)
PL-8C-TH	8	1 13/32	3/8	0.73
PL-10C-TH	10	1 13/32	1/2	1.04

Features

- Multiple parallel jaw positions are locked in to proper groove for superior non-slip performance.
- Serrated jaws for maximum gripping power.
- Polished heads resist rust and corrosion, extending the tool life.
- Shear type wire cutter extends tool use.



PL-10C-TH



TOOLS@HEIGHT INDUSTRIAL GRADE LINESMAN'S PLIERS

Double-Dipped Plastic Handles

Product Code	Description	Overall Length (Inches)	Jaw Length (Inches)	Weight (lbs)
PL-204C-TH	Electrician's	7	1/2	.62

Features

- Designed for wiring, electrical equipment installation and maintenance for utility linemen.
- Polished faces look good and resist corrosion.
- Induction hardened cutting edges stay sharp longer.
- Diamond serrated jaws provide solid grip on wire.
- Double-dipped plastic handle grips are comfortable yet durable.



PL-204C-TH



Be sure to use a lanyard that has more weight capacity than the tool you are attaching because drop forces are greater than actual tool weight.



PL-57C-TH



TOOLS@HEIGHT HIGH LEVERAGE DIAGONAL CUTTING PLIERS

Double-Dipped Plastic Handles

Product Code	Description	Overall Length (Inches)	Cutting Blade Length (Inches)	Weight (lbs)
PL-57C-TH	High Leverage Head	7 1/4	1 9/16	0.50

Features

- Handles are designed to cut wire with ease.
- Polished heads resist rust and corrosion, extending the tool life.
- Induction hardened cutting edges.



PL-46C-TH



TOOLS@HEIGHT INDUSTRIAL GRADE DIAGONAL CUTTING PLIERS

Double-Dipped Plastic Handles

Product Code	Overall Length (Inches)	Cutting Blade Length (Inches)	Weight (lbs)
PL-46C-TH	6	3/4	.37
PL-47C-TH	7	1 1/16	.50

Features

- Handles are designed to cut wire with ease.
- Polished heads resist rust and corrosion, extending the tool life.
- Induction hardened cutting edges.
- Regular flush cutters are used for cutting hard wire.



PL-76C-TH



TOOLS@HEIGHT CHAIN NOSE PLIERS

Double-Dipped Plastic Handles

Product Code	Description	Overall Length (Inches)	Jaw Length (Inches)	Weight (lbs)
PL-76C-TH	Long Nose w/cutter	6 1/2	1 5/16	.38

Features

- Polished heads resist rust and corrosion, extending the tool life.
- Diamond serrated jaws with industrial hardened cutting edges.



PL-149C-TH



TOOLS@HEIGHT DUCK BILL PLIERS

Double-Dipped Plastic Handles

Product Code	Description	Overall Length (Inches)	Jaw Length (Inches)	Weight (Inches)
PL-149C-TH	High Leverage	8	1 1/4	.44

Features

- Jaws are polished with rust-protective coating.
- Flat wide nose provides a better grip than the regular needle nose models.



Any tool that weighs more than 5 pounds should be attached to an anchor point such as a work platform or utility bucket rather than the operator.



TOOLS@HEIGHT THIN BENT CHAIN NOSE PLIERS

Double-Dipped Plastic Handles

Product Code	Description	Overall Length (Inches)	Jaw Length (Inches)	Weight (lbs)
PL-126C-TH	73° Bent Thin Nose	6 1/4	1 1/4	0.33

Features

- Polished heads resist rust and corrosion, extending the tool life.
- Serrated jaws for extra gripping power.
- 73° bent nose model featured thin jaws angled to reach around obstacles and hard-to-reach spaces.



PL-126C-TH



TOOLS@HEIGHT HEAVY DUTY FRONT END WIRE STRIPPERS

Double-Dipped Plastic Handles

Product Code	Overall Length (Inches)	Capacity (AWG-solid wire)	Capacity (stranded wire)	Weight (lbs)
23506-TH	6 1/4	10-20	12-20	.24

Features

- Double-dipped handles with air cushion pockets provide comfortable grip, reducing hand fatigue.
- Spring-loaded handles speed work and reduce hand effort.
- Serrated gripping jaws in nose for use as pliers.
- 2-piece hardened steel pivot for long life service.
- Lock protects cutting edges in storage.



23506-TH



TOOLS@HEIGHT MULTI-PURPOSE COMBINATION WIRE TOOLS

Double-Dipped Plastic Handles with Curved Wire Cutter

Product Code	Description	Overall Length (Inches)	Nose Style	Weight (lbs)
23503-TH	Front-end Stripper	8 1/4	Serrated Pliers	0.45

Features

- Crimp and strip wire sizes 10-22 AWG.
- Double-dipped handles with air cushion pockets provide comfortable grip, reducing hand fatigue.
- 23503 cuts 6 bolt sizes: 4-40 / 5-40 / 6-32 / 8-32 / 10-32 / 10-24.
- 23524 cuts 5 bolt sizes: 4-40 / 6-32 / 8-32 / 10-32 / 10-24.



23503-TH



TOOLS@HEIGHT WIRE TWISTER / CUTTER

Produces Right Hand (clockwise) Twists

Product Code	Overall Length (Inches)	Jaw Length (Inches)	Cutting Blade Length (Inches)	Weight (lbs)
WTC-11-TH	8.5	1 1/16	1/4	.53

Features

- Diamond-shaped, flat top jaw serrations hold wire firmly and resist knicking material being worked on.
- Diagonal nose configurations & "mini" frame allows access in tight quarters.
- Automatic return feature retracts automatically, speeding up operation use and reducing operator fatigue.
- Heat-treated cutting edge holds it edge for cutting tough (up to .041) stainless steel and safety wire.
- One hand operation allows for operator closing and locking with minimum of handle force.
- High carbon alloy steel forging are used for maximum durability and long life.



WTC-11-TH



Be sure to use a lanyard that has more weight capacity than the tool you are attaching because drop forces are greater than actual tool weight.



2520-TH



TOOLS@HEIGHT CABLE CUTTER FOR FERROUS MATERIALS

With Rubber Grips

Product Code	Overall Length (Inches)	Cable Cutting Capacity (Inches)	Replacement Blade Kit	Weight (lbs)
2520-TH	22 1/2	1 3/16 Aluminum/Copper with 1/4 Messenger Wire	2520-SH	4.45

Features

- Lightweight handles provide ease of control while offering solid durability.
- Rubber grips offer control and comfort during working application.
- Cutting notch below top cutting blades provided for cuts on ferrous material.
- Replacement blade kit includes blades, screws, and nuts.



23303-TH



TOOLS@HEIGHT LOCKING PLIERS

Locking Pliers

Product Code	Overall Length (Inches)	Weight (lbs)
23302-TH	7	0.71
23303-TH	10	1.15

Features

- Convenient one-hand release lever
- Heavy-duty jaw surfaces provide extra gripping power



23310-TH



TOOLS@HEIGHT LOCKING PLIERS

Long Nose with Wire Cutter Locking Pliers

Product Code	Overall Length (Inches)	Weight (lbs)
23310-TH	9	0.80

Locking C-Clamps

Product Code	Overall Length (Inches)	Throat Depth	Capacity (Lbs.)	Weight (lbs)
23321-TH	11	2 1/4"	900	1.65

Features

- Convenient one-hand release lever
- Heavy-duty jaw surfaces provide extra gripping power



23321-TH

Any tool that weighs more than 5 pounds should be attached to an anchor point such as a work platform or utility bucket rather than the operator.



TOOLS@HEIGHT DROP FORGED C-CLAMPS

Deep Throat Design, Copper Plated Screw

Product Code	Capacity (Inches)	Throat Depth (Inches)	Screw Diameter (Inches)	Min Test Load (lbs)	Weight (lbs)
CC-402C-TH	2	2 1/32	1/2	3500	1.50
CC-404C-TH	4	3 3/16	3/4	6500	3.15

Features

- Copper plated screw resists weld splatter.
- Drop-forged and heat treated for maximum strength and greater rigidity.
- I-Beam design for extra strength.
- Highly resistant to "springing".



TOOLS@HEIGHT PIPE WRENCHES

Aluminum, Heavy Duty

Product Code	Overall Capacity (Inches)	Maximum jaw Opening	Weight (lbs)
R31090-TH	10	1 1/2	1
R47057-TH	12	2	2.5
R31095-TH	14	2	2.5
R31100-TH	18	2 1/2	3.75

Features

- Professional strength in lightweight aluminum.
- Offers the durability and ease-of-use.



TOOLS@HEIGHT PIPE WRENCHES

Cast Iron, Heavy Duty

Product Code	Overall Capacity (Inches)	Maximum jaw Opening	Weight (lbs)
R31000-TH	6	3/4	0.5
R31005-TH	8	1	0.75
R31010-TH	10	1 1/2	1.75
R31015-TH	12	2	2.75
R31020-TH	14	2	3.5

Features

- Sturdy, cast-iron housing and I-beam handle with full floating forged hook jaw, featuring self-cleaning threads with replaceable hook and heel jaws.
- Heavy-duty pipe wrenches comply with federal specifications GGG-W65IE, Type II, Class A.



We pin the tang of the removable pipe wrench jaw so it cannot become separated from the handle



TOOLS@HEIGHT PIPE CHAIN WRENCH

Heat Treated

Product Code	Pipe Diameter Minimum - Maximum (Pipe Size)		Handle Length (Inches)	Chain Length (Inches)	Weight (lbs)
CW-4-TH	3/8	4	11	15	1.80

Features

- Forged handle is fully heat-treated.
- Ideal for use in close quarters and where space is at a premium.
- Successive "bites" can be taken without removal of wrench from the work piece.
- Fully adjustable to fit any shape pipe.



Be sure to use a lanyard that has more weight capacity than the tool you are attaching because drop forces are greater than actual tool weight.



SOTTHFSNE3-22SM



HDP-1-TH



20543-TH



20678-TH



HSB-1.5A-TH



TOOLS@HEIGHT CLAW HAMMER

Solid steel hammer with Cushion Grip

Product Code	Handle Length (Inches)	Overall Length (Inches)	Weight (lbs.)
SOTTHFSNE3-22SM	7 1/4	15 3/4	2.13

Features

- Cushion grip handle provides greater comfort and safety.
- Durable design for a long lasting hammer.



TOOLS@HEIGHT POWER DRIVE HAMMERS

Fiberglass Handles with Cushion Grip and Shot-Filled Heads

Product Code	Handle Length (Inches)	Overall Length (Inches)	Face Diameter (Inches)	Weight (lbs.)
HPD-1-TH	9 5/8	12 1/2	1 1/2	1.43
HPD-2-TH	10 3/4	13 7/8	2	1.83
HPD-3-TH	10 3/4	14 1/8	2 1/4	2.61
HPD-4-TH	10 3/8	15 1/4	2 5/8	3.20

Features

- Shot-loaded head delivers more striking force per blow and reduces vibration as well as rebound.
- Cushion grip handle provides greater comfort and safety.
- Durable design for a long lasting hammer.



TOOLS@HEIGHT BALL PEIN HAMMERS

Fiberglass Handles with Cushion Grip

Product Code	Handle Length (Inches)	Overall Length (Inches)	Face Diameter (Inches)	Weight (lbs.)
20542-TH	9 1/2	10 3/4	7/8	1.84
20543-TH	10 1/4	11 3/4	7/8	1.23
20544-TH	11 1/4	13	1 7/8	1.67
20545-TH	13	15	1 1/4	2.31
20546-TH	12 3/4	15	1 1/4	2.69

Features

- Ideal for driving punches, chisels and other metal work.
- Fiberglass handle has a cushion grip for greater comfort and safety.
- Hammer heads are drop-forged from specially selected steel and carefully heat treated for dependable strength, hardness and uniformity.



TOOLS@HEIGHT DRILLING HAMMER

Fiberglass Handles with Cushion Grip

Product Code	Handle Length (Inches)	Overall Length (Inches)	Weight (lbs.)
20678-TH	8 1/2	10 1/4	2.55

Features

- Handles are durable and comfortable.
- Heavy duty construction for strength and durability.



TOOLS@HEIGHT BRONZE HAMMER

Fiberglass Handles with Cushion Grip

Product Code	Handle Length (Inches)	Overall Length (Inches)	Face Diameter (Inches)	Weight Class (lbs)
HSB-1.5A-TH	10 3/8	12	1	1.91

Features

- Ideal for applications which require non-sparking conditions.
- The flat surface brass head absorbs impact blows, reduces rebound and helps eliminate marred work surfaces.
- Non-slip cushion grip provides greater comfort and safety.



Any tool that weighs more than 5 pounds should be attached to an anchor point such as a work platform or utility bucket rather than the operator.



TOOLS@HEIGHT 17 PIECE PUNCH & CHISEL SET

Packed in a Roll Pouch

Product Code	Description	Weight (lbs)
PC-17-TH	17 Piece Punch & Chisel Set	4.93

Contents Include:

Product Code	Description	Point Diameter (Inches)	Product Code	Description	Blade Width (Inches)
P-4-TH	Pin Punch	1/8	C-10-TH	Cold Chisel	3/16
P-6-TH	Pin Punch	3/16	C-12-TH	Cold Chisel	3/8
P-8-TH	Pin Punch	1/4	C-16-TH	Cold Chisel	1/2
P-14-TH	Solid Punch	1/8	C-20-TH	Cold Chisel	5/8
P-15-TH	Solid Punch	5/32	C-24-TH	Cold Chisel	3/4
P-16-TH	Solid Punch	3/16	C-42-TH	Cape Chisel	1/4
P-25-TH	Long Taper Punch	5/32	C-62-TH	Diamond Point Chisel	3/8
P-28-TH	Long Taper Punch	1/4			
P-32-TH	Prick Punch	-			
P-40-TH	Center Punch	-			

Features

- Heavy duty construction for strength and durability.



PC-17-TH



TOOLS@HEIGHT COLD CHISELS

Heavy Duty Industrial Grade

Product Code	Stock Size	Blade Width (Inches)	Length (Inches)	Weight (lbs)
C-10-TH	1/4	3/16	5	0.07
C-12-TH	5/16	3/8	5 1/2	0.13
C-15-TH	3/8	7/16	6	0.20
C-16-TH	7/16	1/2	6	0.26
C-20-TH	1/2	5/8	6 1/2	0.33
C-24-TH	5/8	3/4	7	0.59
C-32-TH	7/8	1	8	1.28

Features

- The most commonly used chisels in the chisel line.
- For cutting, shaping and removing metal softer than the cutting edge of the chisel.



C-10-TH



TOOLS@HEIGHT CAPE CHISELS

Heavy Duty Industrial Grade

Product Code	Stock Size	Blade Width (Inches)	Length (Inches)	Weight (lbs)
C-42-TH	3/8	1/4	5	0.15

Features

- Designed for cutting or grooving keyholes or slots.



C-42-TH



TOOLS@HEIGHT DIAMOND POINT CHISELS

Heavy Duty Industrial Grade

Product Code	Stock Size	Square Cut	Length (Inches)	Weight (lbs)
C-62-TH	5/8	3/8	7	.56

Features

- Designed for making a V-groove in metal and to clean out inside corners.



C-62-TH



Be sure to use a lanyard that has more weight capacity than the tool you are attaching because drop forces are greater than actual tool weight.



P-4-TH



TOOLS@HEIGHT PIN PUNCHES

Heavy Duty Industrial Grade

Product Code	Stock Size	Point Diameter	Length (Inches)	Weight (lbs)
P-4-TH	5/16	1/8	4 3/4	0.09
P-5-TH	5/16	5/32	5	0.10
P-6-TH	5/16	3/16	5 1/4	0.15
P-8-TH	3/8	1/4	5 3/4	0.17
P-10-TH	7/16	5/16	6	0.24

Features

- For driving out and removing already loosened pins and keys after initial movement by a solid or starter punch.



Made in U.S.A.



P-16-TH



TOOLS@HEIGHT SOLID PUNCHES

Heavy Duty Industrial Grade

Product Code	Stock Size	Point Diameter	Length (Inches)	Weight (lbs)
P-14-TH	3/8	1/8	5	0.15
P-15-TH	3/8	5/32	5	0.15
P-16-TH	3/8	3/16	5	0.16
P-17-TH	1/2	1/4	5	0.16
P-18-TH	3/8	7/32	5	0.15

Features

- For loosening frozen or tight pins and keys or knocking out rivets.
- Also called starter punches because they are ideal for loosening frozen pins.



Made in U.S.A.



C-32-TH



TOOLS@HEIGHT PRICK PUNCHES

Heavy Duty Industrial Grade

Product Code	Stock Size	Length (Inches)	Weight (lbs)
P-32-TH	1/2	6	.28

Features

- For scribing lines into metal before cutting or riveting, and for punching starting holes for short metal screws.
- Point is more tapered than center punch.



Made in U.S.A.



P-40-TH



TOOLS@HEIGHT CENTER PUNCHES

Heavy Duty Industrial Grade

Product Code	Stock Size	Blade Width (Inches)	Weight (lbs)
P-38-TH	1/4	4	.05
P-39-TH	3/8	4 1/2	.08
P-40-TH	3/8	5	.09
P-42-TH	1/2	6	.07

Features

- Pierces or marks work by indentation for starting pilot drills in metal or other materials.



Made in U.S.A.

Any tool that weighs more than 5 pounds should be attached to an anchor point such as a work platform or utility bucket rather than the operator.



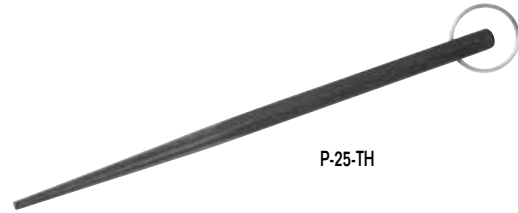
TOOLS@HEIGHT LONG TAPER PUNCHES

Heavy Duty Industrial Grade

Product Code	Stock Size	Point Diameter	Length (Inches)	Weight (lbs)
P-25-TH	3/8	1/32	9	0.25
P-28-TH	5/8	1/4	12	0.82
P-28A-TH	3/4	1/4	15	1.50

Features

- Designed for aligning the holes in metal pieces through which rivets, bolts, or screws will be inserted.
- Not intended for driving pins as punch may become stuck in work.
- Also called line-up aligning or drift punches.



P-25-TH



TOOLS@HEIGHT PUNCH AND CHISEL HOLDER

Comfort Grip Handle

Product Code	Description	Weight (lbs)
28449-TH	7/8	0.50

Features

- Holds chisel and punch securely
- Protect user from hand injury



28449-TH



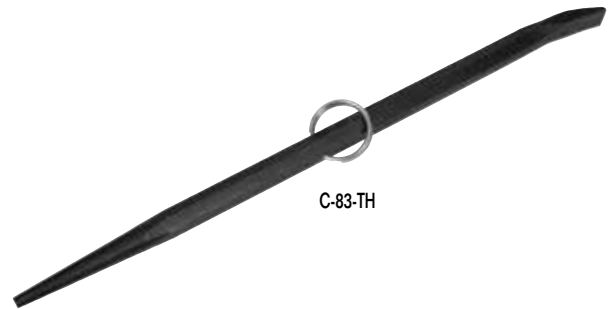
TOOLS@HEIGHT PINCH BARS

Heavy Duty Industrial Grade

Product Code	Overall Length (Inches)	Stock Size	Width of Flat (Inches)	Weight (lbs)
C-83-TH	19 3/8	3/4	7/8	2.32
C-84-TH	30	7/8	1	5.0

Features

- Used for aligning, prying and positioning.



C-83-TH



TOOLS@HEIGHT SUPERIOR HANDSAWS WITH XT TOOTHING

ERGO® handle - Unique XT toothing - Low Friction Coating

Product Code	Blade Length (Inch)	Teeth Per Inch (TPI)	Type of cut	Weight (lbs)
2700-24-XT7-HP-TH	24	7	Aggressive	1.24

Features

- Hard point saw with substantially thicker blade which results in less power-consuming side vibrations.
- Bevel ground teeth on thick blade for height precision and straight cutting with exceptionally good stability.
- Screwed, one piece two-component ergo® handle.
- Handle placement provides even distribution of power along the tooth line.
- Comes with reusable plastic patented tooth protector.



2700-24-XT7-HP-TH



Be sure to use a lanyard that has more weight capacity than the tool you are attaching because drop forces are greater than actual tool weight.



319-TH



TOOLS@HEIGHT PROFESSIONAL HAND HACKSAW

Non-Slip Handles Ensures a Solid and Secure Grip.

Product Code	Description	Blade Length (Inches)	Weight (lbs)
319-TH	Professional Hand Hacksaw	12	1.26

Features

- Alternative 55° blade mounting for flush cutting.
- Offers a strong steel frame that is covered with a protective dual component plastic.
- Comfortable, non-slip back handle and front grip ensures a solid, secure grip.
- Tension mechanism is fully integrated into the handles so there is no obstruction during use.
- Supplied with reliable and shatterproof 12 inch bi-metal blade, 24 TPI.



225-PLUS-TH



TOOLS@HEIGHT TRADITIONAL HAND HACKSAW

Heavy Duty Frame with Blade Storage

Product Code	Description	Blade Length (Inches)	Weight (lbs)
225-PLUS-TH	Traditional Hand Hacksaw	12	1.48

Features

- Allows very high blade tension for accurate and fast cuts.
- Strong rectangular back section for blade storage with easy-to-handle retaining screws.
- Can also be used as a compass saw.
- Alternative 55° blade mounting for flush cutting.
- Supplied with reliable and shatterproof 12 inch bi-metal blade, 24 TPI.



40000-TH



TOOLS@HEIGHT GASKET SCRAPER

Bi-Mold Comfort Grip Handle

Product Code	Blade Length (Inch)	Overall Length	Blade Width	Weight (lbs)
40000-TH	6	9 3/4	7/8	.32

Features

- Bi-mold handle provides comfortable grip, reducing hand fatigue.
- Ideal for gasket removal and cleaning rust and corrosion.





TOOLS@HEIGHT 6 PIECE ENGINEERING FILE SET 1-476-04-3-2-TH

Plastic Handled Files
Contents Include:

Description	Length (Inch)	Type of Cut	Weight (lbs)
Hand Smooth	4	Smooth	.15
Warding Smooth	4	Smooth	.15
Square Smooth	4	Smooth	.15
Three Square Smooth	4	Smooth	.15
Half Round Smooth	4	Smooth	.15
Round Smooth	4	Smooth	.15

Features

- Files are smooth, double cut and designed for the fine filing and polishing applications.
- Supplied with pouch
- For use with optional WTHUNIRET1 Retractable Lanyard



1-476-04-3-2



TOOLS@HEIGHT MILL FILE (USA TYPE)-TWO FLAT EDGES

Engineering File With Bi-Molded ERGO® Handle

Product Code	Length (Inch)	Width (Inch)	Height (Inch)	Teeth Per Inch (TPI)	Type of Cut	Weight (lbs)
1-143-08-1-2-TH	8	2 ⁵ / ₃₂	1/8	44	Bastard	.31

Features

- Surfaces and edges are single cut.
- Suitable for engineering and sharpening file applications.
- Can be used for polishing and deburring work in lathes.
- Widely used for sharpening tools and implements such as spades, shovels, hoes, scrapers, etc.



1-143-08-1-2-TH



TOOLS@HEIGHT ROUND FILE

Engineering File With Bi-Molded ERGO® Handle

Product Code	Length (Inch)	Width (Inch)	Height (Inch)	Teeth Per Inch (TPI)	Type of Cut	Weight (lbs)
1-230-08-2-2-TH	8	5/16	-	36	Second	.25

Features

- Regularly used for filing holes, large fillets and concave surfaces.
File is tapered to a point and has a double cut.



1-230-08-2-2-TH



Be sure to use a lanyard that has more weight capacity than the tool you are attaching because drop forces are greater than actual tool weight.



TOOLS@HEIGHT MAGNETIC PICK-UP TOOL WITH LIGHT

Product Code	Description	Extended Length (Inches)	Weight (lbs)
2535L-TH	Magnetic Pick-up Tool with Light	30	.23

Features

- Wide area lighting
- Soft grip handle
- Powerful magnetic tip
- Pick-up weight is 1 1/4 pounds



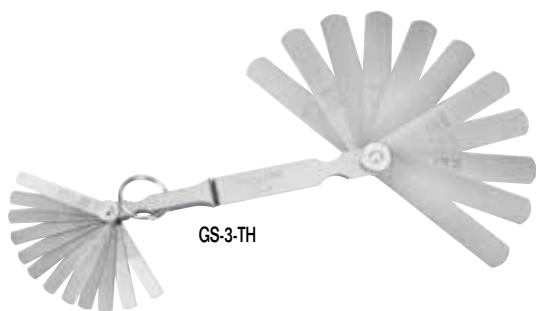
TOOLS@HEIGHT FEELER GAUGE SET

Heavy Duty Machine Shop Tools

Product Code	Description	Thickness	Number of Blades	Weight (lbs)
GS-1-TH	Master Feeler Gauge Set	.0015 - 1/32	25	.19

Features

- 25 blades 3-5/16" x 1/2" in the following thicknesses: .0015, .002, .003, .004, .005, .006, .007, .008, .009, .010, .011, .012, .013, .014, .015, .016, .018, .020, .022, .024, .025, .028, .030, .032, and .035.
- Both decimal and equivalent metric size etched in each blade.
- Gauges supplied in holder with knurled lock-nut which allows the user to select the required blade size and lock it into position.



Product Code	Description	Thickness	Number of Blades	Weight (lbs)
GS-3-TH	Combination Feeler Gauge Set	.002 - .025	22	.11

Features

- Contains total of 22 blades.
- 10 blades 3" x 1/2" in the following thicknesses: .002, .003, .004, .005, .006, .007, .008, .010, .013, .015.
- 12 blades 1-3/4" x 1/4" in the following thicknesses: .011, .012, .013, .014, .015, .016, .017, .018, .019, .020, .022, .025.
- Overall length 5"
- Both decimal and equivalent metric size etched in each blade.
- Gauges supplied in holder with knurled lock-nut which allows the user to select the required blade size and lock it into position.



TOOLS@HEIGHT AVIATION SNIPS

Bi-Mold Comfort Grip Handles

Product Code	Cutting Direction	Overall Length (Inches)	Cut Length (Inches)	Cutting Capacity (cold-rolled/stainless)	Weight (lbs)
28201-TH	Left	9 3/4	1 3/8	18 ga.CR / 22 ga.SS	.93
28203-TH	Right	9 3/4	1 3/8	18 ga.CR / 22 ga.SS	.93
28205-TH	Straight	9 13/16	1 1/2	18 ga.CR / 22 ga.SS	.96

Features

- Color-coded handles help quickly identify the cutting direction.
- Bi-mold handles provide comfortable grip, reduces hand fatigue.
- Meet ANSI and DIN standards.



Any tool that weighs more than 5 pounds should be attached to an anchor point such as a work platform or utility bucket rather than the operator.



TOOLS@HEIGHT TETHERED FLASHLIGHT

Product Code	Description	Weight (lbs.)
FL1-TH	Tethered LED Flashlight	.65

Features

- White collimated beam is as bright as an incandescent flashlight
- Provides 10,000 hours of lamp life and extended battery burn time
- Class I, II, III Div. 1
- Groups ABCDFG operating temperature



FL1-TH



TOOLS@HEIGHT TORPEDO LEVEL

Product Code	Description	Weight (lbs.)
SOTTHFSN25100	10" Magnetic Torped Level	.52

Features

- Big, bright easy to read vials
- Heavy-duty, die-cast frame
- Certified Level accuracy; in top read position: (1/32" over 72")
- Level accuracy guaranteed for life; vials will never fog, leak or require adjustment
- Ideal for scaffolding as well as general construction and maintenance



SOTTHFSN25100



TOOLS@HEIGHT TAPE MEASURE

Product Code	Description	Weight (lbs.)
SOTHTPMA25EM	25' Tether-Ready Tape Measure	1.45

Features

- 1" x 25' / 7m tape measure with inch/metric scale



SOTHTPMA25EM

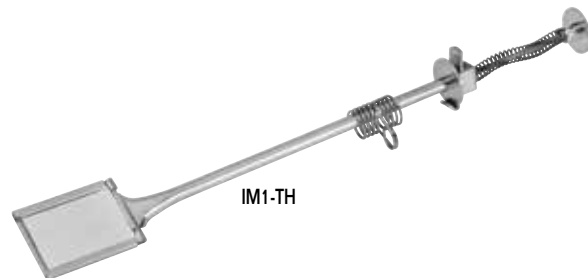


TOOLS@HEIGHT INSPECTION MIRROR

Product Code	Description	Weight (lbs.)
IM1-TH	Tools@Height Tether-Ready Inspection Mirror	.25

Features

- Installed safety-coil can be tethered to prevent dropping
- Hinged rectangular glass mirror
- Mirror is 1-3/16" x 1-1/2"



IM1-TH

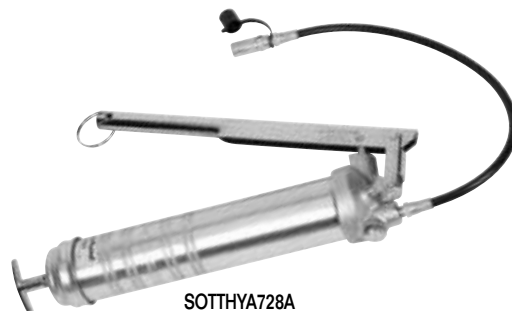


TOOLS@HEIGHT GREASE GUN

Product Code	Description	Weight (lbs.)
SOTTHYA728A	Tools@Height Tether-Ready Grease Gun	4.14

Features

- Lever-operated large capacity gun develops 6,000 PSI
- Accepts 16 oz. bulk or 14-1/4 oz. cartridge grease
- Includes 18" flexible whip hose with coupler and 6" rigid extension



SOTTHYA728A



Be sure to use a lanyard that has more weight capacity than the tool you are attaching because drop forces are greater than actual tool weight.



DR-1X3.5
Max Load: 5 pounds



DR-0.5X2.25
Max Load: 2 pounds



DR-0.5X2.25NC
Max Load: 2 pounds

D-RINGS

Product Code	Description	Quantity
DR-0.5X2.25-10PK	D-Ring 0.5" X 2.25"	10
DR0.5X2.25-100PK	D-Ring 0.5" X 2.25"	100
DR-0.5X2.25NC-10PK	D-Ring 0.5" X 2.25" Non-Conductive	10
DR-0.5X2.25NC-100PK	D-Ring 0.5" X 2.25" Non-Conductive	100
DR-1X3.5-10PK	D-Ring 1" X 3.5"	10
DR-1X3.5-50PK	D-Ring 1" X 3.5"	50

Features

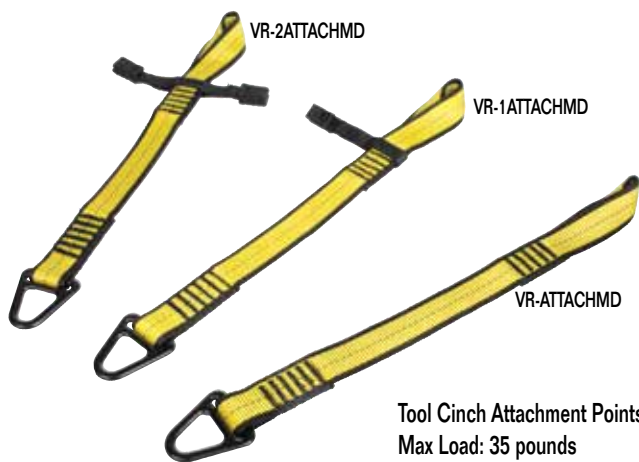
- D-Rings combined with Quick Wrap Tape can create attachment points on tools that are otherwise impossible to tether.
- Non-conductive variant also available (DR-0.5X2.25NC-10PK)
- Third-party load rated for 5 pounds and 2 pounds

TOOL CINCH ATTACHMENTS

Product Code	Description	Quantity
VR-ATTACHMD-10PK	Tool Cinch Medium Duty	10
VR-1ATTACHMD-10PK	Tool Cinch Single Wing Medium Duty	10
VR-2ATTACHMD-10PK	Tool Cinch Dual Wing Medium Duty	10

Features

- Patent-pending Tool Cinch Attachment Points are third-party load rated for 35 pounds.
- The VR-1ATTACHMD and VR-2ATTACHMD feature stabilization wings that can be taped down using Quick Wrap Tape to create a strong connection that won't slide off a tool.
- With a Tool Cinch, it's possible to create attachment points on heavy, difficult to tether tools and equipment.
- The VR-ATTACHMD is perfect for tools with closed handles, or pre-drilled holes.
- The VR-1ATTACHMD is designed to be used with tools that do not have pre-drilled holes or closed handles. It can even be used on tools with triggers such as grinders, bandsaws, or drills.
- The VR-2ATTACHMD is intended to be used on long cylindrical tools where there is at least 5.5 inches of space available for the stabilization wings to be taped down.



Tool Cinch Attachment Points
Max Load: 35 pounds

QUICK SPINS

Product Code	Diameter (Inches)	Load Rating (Pounds)	Quantity
QS-S-10PK	0.6	1	10
QS-M-10PK	0.8	1	10
QS-L-10PK	1	1	10
QS-XL-10PK	1.2	1	10
QS-P-10PK	0.3	No Rated	10
QS-PCOIL-10PK	0.3	No Rated	10
QS-PM-10PK	0.5	No Rated	10
QS-PMCOIL-10PK	0.5	No Rated	10

Features

- The unique, patented Quick Spins accommodate a wide selection of tools, making them tether-ready in seconds
- Reusable, and suitable for non-conductive use, the tangle-resistant spin tops make Quick Spins an outstanding drop prevention solution that doesn't deface tools
- Body is made from a Thermoplastic Rubber and Polyester material (TPU), while the spin tops are made of polyacetal and black carbon (POM)



Any tool that weighs more than 5 pounds should be attached to an anchor point such as a work platform or utility bucket rather than the operator.

QUICK WRAP TAPE

Product Code	Length (Inches)	Width (Inches)	Color	Quantity
QW-HDBLU1	108	1	Blue	1
QW-HDBLU1-10PK	108	1	Blue	10
QW-HDBLU1-CASE	108	1	Blue	240
QW-HDBLU1X2	216	1	Blue	1
QW-HDBLU2	108	2	Blue	1
QW-HDGRN1	108	1	Green	1
QW-HDGRN1-10PK	108	1	Green	10
QW-HDGRN1-CASE	108	1	Green	240
QW-HDYLW1	108	1	Yellow	1
QW-HDYLW1-10PK	108	1	Yellow	10
QW-HDYLW1-CASE	108	1	Yellow	240

Features

- Quick Wrap Tape is made from a self-fusing silicone rubber, and features inner fiberglass webbing reinforcement.
- Quick Wrap Tape is intended to be used with D-Rings and Tool Cinch Attachment Points.

HEAT SHRINK

Product Code	Length (Inches)	Diameter (Inches)	Quantity
HS-0.75X1.75-25PK	1.75	0.75	25
HS-1X1.75-25PK	1.75	1	25
HS-1.5X2-25PK	2	1.5	25
HS-1.5X3-25PK	3	1.5	25
HS-2X4-10PK	4	2	10
HS-3X4-10PK	4	3	10

Features

- Heat Shrink is used to create an even stronger connection that is more resistant to abrasives and harsh environments
- Links shrink 300% in size, while an inner adhesive securely fastens itself to whatever is being wrapped.

Tools not included

D-RING CORD

Product Code	Load Rating (Pounds)	Quantity
DR-CORD-10PK	5	10

Features

- The D-Ring cord (patent pending) easily cinches to tools weighing under 5 pounds, creating an instant attachment point for many tools

Tools not included

MICRO D-RING

Product Code	Quantity
DR-MICRO-10PK	10

Features

- The Micro D-Ring is an attachment point that can be used on small tools and equipment that are otherwise not possible to tether.
- The DR-MICRO is a flexible piece of ballistic plastic that can conform to the shape of many objects. A piece of industrial grade double-sided adhesive tape sticks to the bottom of the Micro D-Ring, allowing it to be attached to a clean surface.

QUICK RINGS

Product Code	Diameter (Inches)	Load Rating (Pounds)	Quantity
QR-00.75-25PK	0.75	2	25
QR-01-25PK	1	2	25
QR-01.5-25PK	1.5	2	25



QW-HDYLW1



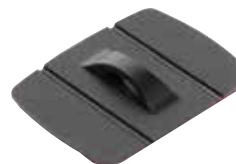
Tape is always used with D-Rings and cinches. Heat Shrink is added to make a more durable surface



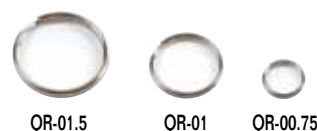
DR-CORD



EXT-C2LCOIL
(see page 118)



DR-MICRO



QR-01.5

QR-01

QR-00.75



Be sure to use a lanyard that has more weight capacity than the tool you are attaching because drop forces are greater than actual tool weight.

WARRANTIES

Safety

Hand tools are generally designed to perform one function — do not use them improperly. Screwdrivers are not chisels, adjustables are not hammers and pliers are not intended to replace wrenches. Each of our product groups contains specific safety tips for proper tool usage. Additionally, wear appropriate clothing for the job, and always wear safety glasses. A special note on safety ... use of hand sockets (chrome finish) with power drive (impact) equipment is a misuse of the tool and can result in serious injury.

Trademarks

The following are trademarks of Snap-on Incorporated in the United States, and some are registered in other countries. All other Snap-on trademarks, service marks, domain names, logos, and company names referred to in this catalog are either trademarks, registered trademarks, service marks, domain names, logos, company names of or are otherwise the property of Snap-on Incorporated or its affiliates. In countries where any of the Snap-on trademarks, service marks, domain names, logos and company names are not registered, Snap-on Incorporated claims other rights associated with unregistered trademarks, service marks, domain names, logos, and company names. Other product or company names referred to in this catalog may be trademarks of their respective owners.

Williams®	SUPER SOCKET®
Wms.®	SUPERRATCHET®
ATI® TOOLS	SUPERRENCH®
Bahco®	SUPERTORQUE®
SIOUX™ TOOLS	SUPER-WMS®
CDI Torque Products®	PHILLIPS®
SUPERECTOR®	TORX®
SUPERADJUSTABLE®	POZIDRIV®
SUPERBLACK®	ROBERTSON®
SUPERCOMBO®	

Limited Warranty:

Snap-on Industrial Brands warrants that its' products shall be free from defects in workmanship and materials for the usable life of the product. This warranty is limited to products purchased from authorized Snap-on Industrial Brands distributors. Snap-on Industrial Brands, at its sole option, will repair, replace or grant a credit for product that does not comply with this warranty. The product must be returned to the Snap-on Industrial Brands distributor from whom the product was purchased for warranty service. If the distributor is unavailable, the product should be returned to Snap-on Industrial Brands, 6969 Jamesson Rd, Midland, GA 31820, freight prepaid. Include a contact name, phone number and a return address; please do not supply a post office box. Snap-on Industrial Brands, does not provide any warranty for: 1) consumable products, 2) products subjected to abnormal use, 3) normal wear and tear of products. Consumable products are goods reasonably expected to be used up or damaged during use. Abnormal use includes misuse, modification, neglect or lack of maintenance.

Torque Products Warranty:

Snap-on Industrial Brands warrants to the original purchaser of CDI Torque Products that the company's torque products are free from defects in workmanship and materials. Snap-on Industrial Brands will repair or replace CDI Torque Products which fail to give satisfactory service due to defective workmanship or

materials (excluding calibration) for 12 months from the date of original purchase. Snap-on Industrial Brands warrants "initial, out of box calibration" of each new, unused CDI Torque Product. Repair, replacement or recalibration shall be at the election and expense of Snap-on Industrial Brands, and is your exclusive remedy in place of all other rights and remedies. Products must be returned with proof of purchase, freight prepaid, to a CDI Torque Products repair center for warranty service. Snap-on Industrial Brands will repair or replace Williams' Torque Multipliers which fail to give satisfactory service due to defective workmanship or material for 90 days from the date of original purchase. Snap-on Industrial Brands does not provide any warranty for products subjected to abnormal use. Abnormal use includes misuse, accident, modification, unreasonable use, neglect, lack of maintenance, or use after the tool is significantly worn.

Toolbox Warranties:

All toolboxes sold under the Williams brand will be warranted for a period of one (1) year from the date of purchase against defects in materials and workmanship. Any part(s) which are determined by Snap-on Industrial Brands to be defective in material or workmanship, will be, at Snap-on Industrial Brands discretion, repaired, replaced, or granted a credit. Any toolboxes that are to be returned, must be done through Snap-on Industrial Brands current Return Goods Policy, be sent back freight prepaid, and accompanied with a dated copy of the purchase order.

Ratchets:

Ratchets purchased new will be replaced with new ratchets. All broken ratchets must be returned to Snap-on Industrial Brands, 6969 Jamesson Rd, Midland, GA 31820 with a Returned Goods Authorization number (RGA #), freight pre-paid, in order to receive credit. Field destroyed ratchets will not be eligible for credit.

TO THE EXTENT ALLOWED BY APPLICABLE LAW, THIS WARRANTY IS IN LIEU OF ALL OTHER WARRANTIES, EXPRESSED OR IMPLIED, INCLUDING THE IMPLIED WARRANTIES OF MERCHANTABILITY AND FITNESS FOR A PARTICULAR PURPOSE. SNAP-ON INDUSTRIAL BRANDS AND ITS AFFILIATED COMPANIES SHALL NOT BE LIABLE FOR ANY INCIDENTAL, SPECIAL OR CONSEQUENTIAL COSTS OR DAMAGES INCURRED BY THE PURCHASER OR OTHERS.

This warranty gives you specific legal rights, and you may also have other rights which vary from state to state or country.

Snap-on Industrial Brands
Warranty Information Center
6969 Jamesson Road
Midland, GA 31820

Snap-on INDUSTRIAL BRANDS



Snap-on Industrial Brands is a division of IDSC Holdings, LLC

Sales Headquarters

Snap-on Industrial Brands
2801 80th Street
Kenosha, WI 53143

Customer Service

Toll Free: USA 800-446-7404
Canada: 800-296-4787
Fax: 800-877-5687
Email: industrialbrands@snapon.com

Distribution Center

Snap-on Industrial Brands
6969 Jamesson Road
Midland, GA 31820

Snap-on Incorporated

©2014 Snap-on Incorporated

snapon.com/industrialbrands