

products for the

Agriculture Industry





hydraulic hose
 hose assemblies
 chemical transfer hose
 suction / discharge hose
 pressure washer products
 spray hose
 eva tubing

Past
 Present
 Future

We're committed to you!

Dear Agricultural Products User:

Apache Inc. is privileged to have you as a customer. You are one of the reasons that we are the industry's premier supplier of agricultural hoses and hose accessories. Apache takes great pride in stocking the items you need, shipping them to you on-time, and introducing new and innovative products.

We value you as our business partner and look forward to serving you now and in the future.

Tom Pientok
 President and COO

www.apache-inc.com



Apache is proud to participate in programs offered by the only individual-membership organization in the grain operations industry, GEAPS is an international professional society dedicated to providing its members with forums to generate leadership, innovation and excellence in grain-related industry operations.



Apache is proud to be a participating distributor in the NAHAD Listed Members Program. As a NAHAD Listed Member, Apache utilizes and follows the association hose assembly guidelines for the Fabrication of Industrial Hose Products and the Fabrication of Hydraulic Hose Products. These hose assembly guidelines offer an important base-line performance measure to ensure safer and higher quality assemblies. Another reason why... Apache is the premier provider of agricultural products to the agricultural market.

AIR HOSE

300# EPDM Premium Red Rubber 24
 300# Premium PVC 24
 Air Tank Hose (PVC)..... 24
 Couplers, Plugs & Accessories 25
 Hose Reels 25
 Industrial PVC Yellow..... 24
 Xtreme Flex 24

BELT PRODUCTS

Agricultural Belting, Accessories & Services..... 46-48
 Belts – Baler, PVC..... 44-45
 Flexco® Fasteners..... 45

CHEMICAL HOSE

Ag Chemical Transfer Pump 13
 Anhydrous Ammonia Care/Maintenance 14
 Anhydrous Ammonia Hose (Nylon, Stainless Steel) 13-14
 Modified X-Link 12
 Nylon Tube Chemical 13
 Smart-Hose™ 15
 UHMW 12

DISCHARGE HOSE

Heavy-Duty PVC Layflat 10
 Mill Wash Down..... 10
 PVC Layflat Blue, Brown Medium-Duty..... 9
 Rubber Medium/Heavy-Duty 11

HOSE ACCESSORIES

Ball Valves – Polypropylene 36
 Band-It® – Clamps, Tools 42
 Clamps – H-D Super 41
 Clamps – Ultra T-Bolt..... 41
 Clamps – Worm Gear & Micro Worm Gear 41
 Couplings – Cam & Groove (Aluminum & Stainless) 33
 Couplings – Cam & Groove (Polypropylene) 38
 Couplings – Cam & Groove Replacement Parts 33
 Couplings – Hose Menders..... 34
 Couplings – King Nipples..... 34
 Couplings – Pin-Lug..... 34
 Foot Valves 35
 Gauges..... 43
 Polypropylene Schedule 80 Threaded Fittings ... 39-40
 Pump V-Belts – Ace/Hypro 43
 Strainers – Plated Steel Skimmer Strainers 35
 Strainers – Plated Steel and Polypropylene Suction 35
 Strainers – Polypropylene Line Strainers 37

HYDRAULIC

Accessories 32
 Hydraulic QD's & Adapters..... 30-31
 Hydraulic Crimpers..... 29
 Universal/Gates Hose 27-28

MISCELLANEOUS HOSE PRODUCTS

Air Seeder/Ducting 16
 Curb Pump..... 17
 Ducting – GPE, HT & UFD..... 16
 Farm Fuel Transfer 17
 Fuel Nozzles & Accessories 18-19
 Grainvac Hose 16
 LPG 19
 Twin Line Welding 19

SPRAY HOSE

EPDM Rubber 2-3
 PVC 600#, 800# 3

SUCTION HOSE

Drag Hose 6
 EPDM Rubber 4
 Enforcer 4
 Fertilizer Solution..... 5
 Liquid Manure/PVC Sludge 5
 PVC Water Style G, Style K 7
 Spiralite 6200 Hose & 3000 Clamp 6
 Transfer Pump Hose Kits. 8

TUBING

Clear Vinyl (Non-Reinforced, Reinforced) 20-21
 EVA (Non-Reinforced, Reinforced) 20
 Linear Low Density Polyethylene 21
 Push-In Fittings 22-23
 Push-In Valves 22
 Tube Cutter & Blades..... 21

WATER HOSE

Contractors Industrial Water/Garden Hose 26
 Garden Hose Accessories 26

Due to continual product improvement, We reserve the right to alter specs and prices without prior notice. Specifications listed are approximations for use as a guide only.

EPDM RUBBER SPRAY HOSE (BLACK)



BULK HOSE

AG 200 (also available in red)

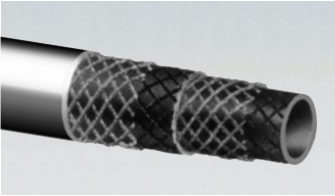
Apache P/N	I.D. x O.D.	Length	Spiral	Wt. 100'
10031600	1/4" x 1/2"	500'	2	9.0#
10031620	3/8" x 11/16"	500'	2	14.0#
10031630	1/2" x 13/16"	500'	2	21.0#
10031640	5/8" x 15/16"	500'	2	24.0#
10031650	3/4" x 1-1/8"	500'	2	32.0#
10031660	1" x 1-25/64"	500'	2	44.0#

AG 300 (also available in red)

Apache P/N	I.D. x O.D.	Length	Spiral	Wt. 100'
10031700	1/4" x 9/16"	500'	2	12.0#
10031720	3/8" x 23/32"	500'	2	17.0#
10031730	1/2" x 27/32"	500'	4	25.0#
10031740	5/8" x 1"	500'	4	30.0#
10031750	3/4" x 1-5/32"	500'	4	37.0#
10031760	1" x 1-25/64"	500'	4	53.0#



AG 200 Hose



AG 300 Hose

3000 SERIES (also available in red)

Apache P/N	I.D. x O.D.	Length	Spiral	W.P.	Wt. 100'
10040507	1-1/4" x 1-25/32"	250'	4	200#	77.0#
10041007	1-1/2" x 2-1/32"	200'	4	200#	86.0#
10041011	2" x 2-1/2"	300'	4	150#	108.1#

Applications: Versatile general purpose hose, which is excellent for air and water service as well as many agricultural chemicals including LASSO® herbicide. The EPDM tube and cover resists heat, sunlight, ozone and weathering. Exceeds RMA class C medium oil resistance requirements.

Suitable for applications such as oil mist lubricating air lines, but NOT suitable for the transfer of petroleum products. **Construction:** Closely plied reinforcement of 2 or 4 spiral high tensile textile cord provides excellent coupling retention and kink resistance. **Working Pressure:** AG 200 is 200 P.S.I., AG 300 is 300 P.S.I. **Fittings:** Universal quick couplings, long or short shank, insert type, reusable. **Note:** 85% of 1/4"-1" reels come in a single 500' length. The reels may have up to 3 pieces, the minimum length of any one piece is 50'. **Contact Apache for pricing on red cover hose.**

WARNING: Not for use with anhydrous ammonia.

SHRINK WRAPPED COIL w/LABEL

AG 200

Apache P/N	I.D. x O.D.	Length	Spiral	Wt. 100'
10031548	1/4" x 1/2"	10'	2	0.9#
10031550	3/8" x 11/16"	10'	2	1.4#
10031552	1/2" x 13/16"	10'	2	2.1#
10031553	5/8" x 15/16"	10'	2	2.4#
10031554	3/4" x 1-1/8"	10'	2	3.2#
10031556	1" x 1-25/64"	10'	2	4.4#
10031560	1/4" x 1/2"	25'	2	2.3#
10031562	3/8" x 11/16"	25'	2	3.5#
10031564	1/2" x 13/16"	25'	2	5.3#
10031566	5/8" x 15/16"	25'	2	6.0#
10031568	3/4" x 1-1/8"	25'	2	8.0#
10031570	1" x 1-25/64"	25'	2	11.0#
10031574	1/4" x 1/2"	50'	2	4.5#
10031576	3/8" x 11/16"	50'	2	7.0#
10031578	1/2" x 13/16"	50'	2	10.5#
10031580	5/8" x 15/16"	50'	2	12.0#
10031582	3/4" x 1-1/8"	50'	2	16.0#
10031584	1" x 1-25/64"	50'	2	22.0#

AG 300

Apache P/N	I.D. x O.D.	Length	Spiral	Wt. 100'
10031670	1/4" x 9/16"	10'	2	1.2#
10031671	3/8" x 23/32"	10'	2	1.7#
10031672	1/2" x 27/32"	10'	4	2.6#
10031673	5/8" x 1"	10'	4	3.0#
10031674	3/4" x 1-5/32"	10'	4	3.8#
10031675	1" x 1-25/64"	10'	4	5.3#
10031676	1/4" x 9/16"	25'	2	3.0#
10031678	3/8" x 23/32"	25'	2	4.3#
10031682	1/2" x 27/32"	25'	4	6.3#
10031684	5/8" x 1"	25'	4	7.5#
10031686	3/4" x 1-5/32"	25'	4	9.3#
10031688	1" x 1-25/64"	25'	4	13.3#
10031689	1/4" x 9/16"	50'	2	6.0#
10031690	3/8" x 23/32"	50'	2	8.5#
10031692	1/2" x 27/32"	50'	4	12.5#
10031694	5/8" x 1"	50'	4	15.0#
10031696	3/4" x 1-5/32"	50'	4	18.2#
10031698	1" x 1-25/64"	50'	4	26.5#

Packaged: Shrink wrapped coil with point of purchase color label for convenient retail sale.



AG 200 Hose



AG 300 Hose

EPDM RUBBER SPRAY HOSE (BLACK)



REELS AVAILABLE TO SHIP UPS

AG 200			AG300		
Apache P/N	I.D. x Ft.	Wt. Ea.	Apache P/N	I.D. x Ft.	Wt. Ea.
10031664	3/8" x 400'	60.4#	10031713	3/8" x 350'	61.3#
10031665	1/2" x 250'	60.0#	10031714	1/2" x 200'	48.2#
10031666	5/8" x 225'	64.4#	10031715	5/8" x 200'	57.4#
10031667	3/4" x 150'	54.5#	10031716	3/4" x 150'	59.6#
10031668	1" x 125'	54.1#	10031717	1" x 100'	51.8#

Note: Reels meet UPS weight and size criteria.



BOXED

AG 200			AG300		
Apache P/N	I.D. x Ft.	Wt. Ea.	Apache P/N	I.D. x Ft.	Wt. Ea.
10031850	3/4" x 100'	36.3#	10031950	3/4" x 100'	42.8#
10031860	1" x 100'	43.3#	10031960	1" x 100'	53.7#
			10041119	1-1/4" x 100'	78.5#
			10041120	1-1/2" x 100'	90.4#

PVC 600# SPRAY HOSE



BULK HOSE

Apache P/N	I.D. x O.D.	Length	Braid	W.P.	Wt. 100'
15010002	3/8" x 0.65"	300'	1	600#	13.4#
15010006	1/2" x 0.79"	300'	1	600#	17.6#
15010008	5/8" x 0.96"	300'	1	600#	25.6#
15010009	3/4" x 1.14"	300'	1	600#	34.5#

Applications: PVC high pressure spray hose for use with fertilizers, herbicides, and insecticides in agricultural and lawn spray service, carpet cleaning, and roof cleaning industries. **Construction:** PVC tube and cover; co-extruded with a single braided synthetic cord.

Features: Black tube and yellow ribbed non-marking cover, lightweight, flexible/abrasion resistant hose. **Fittings:** Hydraulic type crimp-on fittings.

Temp. Range: 25°F to 150°F. **W.P.:** Applicable @68°F.

WARNING: Not for transfer of anhydrous ammonia. Not for use with aromatic based hydrocarbons (Xylene).

PVC 800# SPRAY HOSE



BULK HOSE

Apache P/N	I.D. x O.D.	Length	Braid	W.P.	Wt. 100'
15010016	3/8" x 0.687"	300'	1	800#	13.7#
15010017	1/2" x 0.844"	300'	1	800#	18.0#
15010020	5/8" x 1.03"	300'	1	800#	32.0#
15010019	3/4" x 1.14"	300'	1	800#	30.3#

Applications: PVC high pressure spray hose for use with fertilizers, herbicides, and insecticides in agricultural and lawn spray service, carpet cleaning, and roof cleaning industries. **Construction:** PVC tube and cover; co-extruded with a single braided synthetic cord.

Features: Black tube and green non-marking cover, lightweight, flexible/abrasion resistant hose. **Fittings:** Hydraulic type crimp-on fittings.

Temp. Range: -10°F to 130°F. **W.P.:** Applicable @68°F.

WARNING: Not for transfer of anhydrous ammonia. Not for use with aromatic based hydrocarbons (Xylene).

EPDM RUBBER SUCTION HOSE



BULK HOSE

Apache P/N	I.D. x O.D.	Length	M.B.R.	W.P.	Wt. 100'
12003485	1" x 1-1/2"	100'	4.0"	150#	50#
12003490	1-1/4" x 1-23/32"	100'	6.0"	150#	60#
12003501	1-1/2" x 2"	100'	8.0"	150#	82#
12004001	2" x 2-1/2"	100'	10.0"	150#	101#
12004106	2-1/2" x 3"	100'	14.0"	150#	150#
12004508	3" x 3-17/32"	100'	22.0"	150#	175#
12005700	3-1/2" x 4"	100'	14.0"	150#	235#
12005008	4" x 4-3/4"	100'	22.0"	100#	240#
12005504	6" x 6-7/8"	100'	30.0"	100#	484#

ASSEMBLIES

CPLD. ALUM MALE x FEMALE SHORT SHANK WITH BAND-IT® CLAMPS

Apache P/N	I.D.	Length	Wt. 100'
98128195	1-1/2"	20'	16.8#
98128300	2"	20'	17.2#
98128320	3"	20'	48.3#
98128332	4"	20'	64.8#
98128344	6"	20'	109.4#

Applications: A lightweight and flexible suction/discharge hose for the agriculture and construction industries. Will handle full vacuum ratings and pressures up to 150 P.S.I. **Construction:** EPDM tube reinforced with synthetic cord and dual spiral helix wire. EPDM cover is resistant to abrasion and weathering. **Assemblies:** Coupled with male x female aluminum short shanks with Band-It® clamps. **Std. Length:** 100' bulk. **Assemblies in other lengths available upon request.**

WARNING: Not for transfer of anhydrous ammonia. For undiluted chemicals, consult Apache customer service for hose recommendations.



Coupled Male x Female Short Shank



Coupled Cam and Groove

ENFORCER – REINFORCED FERTILIZER SOLUTION HOSE



BULK HOSE

Apache P/N	I.D. x O.D.	Length	Vac. Rat.	M.B.R.	W.P.	Wt. Ea.
R12012962	1-1/2" x 1.87"	50'	29.8in/HG	3.0"	100#	23.5#
R12012964	2" x 2.66"	50'	29.8in/HG	5.5"	100#	43.5#
R12012966	3" x 3.86"	50'	29.8in/HG	7.0"	85#	102.5#
R12012968	4" x 4.87"	50'	29.8in/HG	12.0"	70#	114.5#
12012960	1-1/4" x 1.60"	100'	29.8in/HG	3.0"	100#	34#
12012962	1-1/2" x 1.87"	100'	29.8in/HG	3.0"	100#	47#
12012964	2" x 2.66"	100'	29.8in/HG	5.5"	100#	87#
12012966	3" x 3.86"	100'	29.8in/HG	7.0"	85#	205#
12012968	4" x 4.87"	100'	29.8in/HG	12.0"	70#	229#

Applications: A reinforced, flexible suction/discharge hose for the agricultural and construction industries. Hose is resistant to diluted herbicides and pesticides with good flexibility in sub-zero weather. **Construction:** EPDM tube with polyethylene helix and a high tensile fabric reinforcement. **Temp. Range:** -30°F to 140°F. **W.P., M.B.R., and Vac. Rating:** Applicable @72°F. **Assemblies available upon request.**



While Supplies Last!
Special 50' Bulk Lengths
Call 1-800-553-5455

New improved helix!



FERTILIZER SOLUTION SUCTION / DISCHARGE HOSE



While Supplies Last!
Special 50' Bulk Lengths
Call 1-800-553-5455

BULK HOSE

EPDM RUBBER WITH POLYETHYLENE HELIX (Yellow)

Apache P/N	I.D. x O.D.	Length	Vac. Rat.	M.B.R.	W.P.	Wt. Ea.
R12012795	1" x 1.34"	50'	28 in/HG	4.0"	80#	11.5#
R12012797	1-1/4" x 1.61"	50'	28 in/HG	5.0"	70#	15.0#
R12012800	1-1/2" x 1.96"	50'	28 in/HG	6.0"	60#	23.5#
R12012805	2" x 2.49"	50'	28 in/HG	9.0"	60#	34.5#
R12012807	2-1/2" x 3.00"	50'	28 in/HG	11.0"	50#	46.5#
R12012810	3" x 3.60"	50'	28 in/HG	12.0"	50#	59.5#
R12012815	4" x 4.69"	50'	28 in/HG	17.0"	45#	90.5#
12012795	1" x 1.34"	100'	28 in/HG	4.0"	80#	23.0#
12012797	1-1/4" x 1.61"	100'	28 in/HG	5.0"	70#	30.0#
12012800	1-1/2" x 1.96"	100'	28 in/HG	6.0"	60#	47.0#
12012805	2" x 2.49"	100'	28 in/HG	9.0"	60#	69#
12012807	2-1/2" x 3.00"	100'	28 in/HG	11.0"	50#	93#
12012810	3" x 3.60"	100'	28 in/HG	12.0"	50#	119#
12012815	4" x 4.69"	100'	28 in/HG	17.0"	45#	181#
12012928	6" x 6.86"	100'	28 in/HG	27.0"	35#	348#

ASSEMBLIES

CPLD. ALUM MALE X FEMALE SHORT SHANK WITH BAND-IT® CLAMPS

Apache P/N	I.D. x Length	Wt. Ea.
98128170	1-1/2" x 20'	10.3#
98128180	2" x 20'	14.9#
98128185	2-1/2" x 20'	20.3#
98128190	3" x 20'	27.0#
98128194	4" x 20'	43.0#

Applications: A lightweight, rugged, flexible suction/discharge hose for the agricultural, rental, mining, and construction industries. Hose is resistant to herbicides and pesticides, including Lasso® and has good flexibility even in cold weather.

Construction: EPDM with polyethylene helix reinforcement that serves as a scuff strip. **Assemblies:** Coupled with male x female aluminum short shanks with Band-It® clamps. **Temp. Range:** -30°F to 140°F. **W.P., M.B.R., and Vac. Rating:** Applicable @68°F.

Assemblies in other lengths and coupling options available upon request.

WARNING: Not for transfer of anhydrous ammonia. For undiluted chemicals, consult Apache Customer Service for hose recommendations.



LIQUID MANURE SUCTION HOSE – PVC SLUDGE / LOW TEMP (GRAY / GREEN)



BULK HOSE

Apache P/N	I.D. x O.D.	Length	M.B.R.	W.P.	Wt. 100'
12026115	1-1/2" x 1.80"	100'	2.7"	70#	47#
12026116	2" x 2.40"	100'	3.5"	70#	68#
12026118	3" x 3.45"	100'	5.0"	55#	114#
12026119	4" x 4.55"	100'	7.0"	45#	174#
12026120	6" x 6.60"	20'/25'/30'	10.0"	35#	322#

Applications: A low temp PVC suction and discharge hose for water, light chemicals, and sludge pumping service in the construction, rental, marine, agricultural, and irrigation industries. **Construction:** A smooth bore hose for maximum flow with a PVC helix for increased flexibility and abrasion resistance. **Temp. Range:** -15°F to 140°F (under static conditions). **W.P. and M.B.R.:** Applicable @68°F. **Bulk Length:** 6" I.D. is available only in lengths of 20', 25', or 30'. The maximum bulk length for all other sizes is 100'.

Assemblies in other lengths and coupling options available upon request.

WARNING: For undiluted chemicals, contact Apache customer service for hose recommendations.

DRAG HOSE

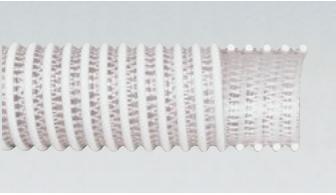


SLUDGE & IRRIGATION FEEDER HOSE

Applications: A high performance layflat hose for agricultural slurry disposal, industrial sludge disposal to land, dirty water distribution systems or non-portable water transfer. **Construction:** Features unique "through-the-weave" one piece construction comprising a circular woven high tenacity polyester reinforcement totally encapsulated in a tough vulcanized rubber cover and lining. The integral woven construction imparts extremely high tensile strength to withstand all practical loading conditions. **Features:** Flexible, lightweight, compact and excellent coilability for economical storage. Long continuous lengths can be quickly deployed and retrieved using light duty reels. Unique tensile construction for minimum pressure loss and maximum hydraulic efficiency. Designed for long service life on a wide variety of ground conditions with minimal maintenance.

SLUDGE & IRRIGATION DRAG HOSE

Applications: A flexible layflat drag hose for disposal of dirty water and soil injection of sludge and slurries. **Construction:** A unique "through-the-weave" one piece construction. **Features:** Strength and durability of polyurethane combined with the flexibility and easy handling of a traditional PVC / Nitrile rubber hose with exceptional resistance to abrasion, cutting, ozone, UV, weathering, and microbiological attack from untreated sludges and slurries. Unique "fine weave" construction increases capacity of reeler by up to 30%. Quick and easy to deploy and retrieve long continuous lengths without twisting using light duty reels. Highly flexible for minimum pressure loss and maximum hydraulic efficiency. Designed for long service life with minimal maintenance.



SPIRALITE 6200 HOSE

Apache P/N	I.D. x O.D.	Length	Vac. Rat. @ 68°F	B.P. @ 68°F	M.B.R. @ 68°F	W.P. @ 68°F	Wt. Ft.
12026108	4" x 4.73"		28 in/HG	200	8	75	1.74#
12026109	6" x 7.13"		28 in/HG	180	12	70	3.81#
12026110	8" x 9.30"	25'	28 in/HG	150	30	50	5.00#
12026111	10" x 11.50"	25'	28 in/HG	105	44	35	7.48#

Applications: General suction for water and light chemical solutions. **Construction:** Clear PVC corrugated hose with a white helix containing a braided reinforcement. Clear wall allows easy inspection of material flow. Smooth inside prevents material blockage. Exposed helix, less resistance to dragging. Braided wall handles higher pressure. Braided construction reduces elongation during applications. **Temp. Range:** -10°F to 130°F. **Standard Lengths:** 1" thru 6" is 100'. 8" and greater 20', 25', 30', 35' or 40'.

SPIRALITE 3000 CLAMPS

Apache P/N	I.D.
43101113	4"
43101114	6"
43101115	8"
43101116	10"

Applications: Specially designed to fit Spiralite corrugated hoses. Prevents leaks. **Construction:** Cadmium plated steel.



PVC WATER SUCTION HOSE – STYLE K (CLEAR)



While Supplies Last!
Special 50' Bulk Lengths
Call 1-800-332-3243

BULK HOSE

Apache P/N	I.D. x O.D.	Length	M.B.R.	W.P.	Wt. Ea.
R12013590	3/4" x 1.00"	50'	2.0"	100#	10#
R12015003	1" x 1.25"	50'	3.0"	90#	13#
R12016506	1-1/4" x 1.515"	50'	4.0"	70#	16#
R12017006	1-1/2" x 1.81"	50'	5.0"	70#	22.5#
R12017502	2" x 2.34"	50'	7.0"	60#	31.5#
R12017507	2-1/2" x 2.88"	50'	8.0"	60#	45#
R12017515	3" x 3.42"	50'	10.0"	50#	58#
R12017516	4" x 4.49"	50'	14.0"	45#	91#
12013590	3/4" x 1.00"	100'	2.0"	100#	20#
12015003	1" x 1.25"	100'	3.0"	90#	26#
12016506	1-1/4" x 1.515"	100'	4.0"	70#	32#
12017006	1-1/2" x 1.81"	100'	5.0"	70#	45#
12017502	2" x 2.34"	100'	7.0"	60#	63#
12017507	2-1/2" x 2.88"	100'	8.0"	60#	90#
12017515	3" x 3.42"	100'	10.0"	50#	116#
12017516	4" x 4.49"	100'	14.0"	45#	182#
12017517	5" x 5.58"	100'	23.0	45#	311#
12017518	6" x 6.80"	100'	28.0	45#	458#

Applications: A PVC suction/discharge hose for water, light chemicals, and pumping service in the agricultural, rental, construction, marine, and irrigation industries. **Construction:** A smooth bore hose made of flexible abrasion resistant extruded clear PVC with a rigid PVC helix.

Temp. Range: -10°F to 130°F (under static conditions). **W.P. and M.B.R. (continuous service):** Applicable @68°F.

Std. Length: 100' bulk. **Assemblies available upon request. Also available with black or green helix.**

PVC WATER SUCTION HOSE – STYLE G (GREEN)



BULK HOSE

Apache P/N	I.D. x O.D.	Length	M.B.R.	W.P.	Wt. Ea.	Apache P/N	I.D. x O.D.	Length	M.B.R.	W.P.	Wt. Ea.
12022501	1" x 1.25"	100'	3"	90#	26#	12024002	3" x 3.42"	100'	10"	50#	116#
12022505	1-1/4" x 1.51"	100'	4"	70#	32#	12024509	4" x 4.49"	100'	14"	45#	182#
12022506	1-1/2" x 1.81"	100'	5"	70#	45#	12025009	6" x 6.80"	100'	28"	45#	458#
12023006	2" x 2.34"	100'	7"	60#	63#	12025505	8" x 8.94"	30'	40"	40#	212#
12023502	2-1/2" x 2.88"	100'	8"	60#	90#						

ASSEMBLIES

CPLD. ALUM MALE X FEMALE SHORT SHANK WITH BAND-IT® CLAMPS

Apache P/N	I.D.	Length	Wt. Ea.	Apache P/N	I.D.	Length	Wt. Ea.
98128005	1-1/2"	15'	7.5#	98128053	3"	15'	21.0#
98128010	1-1/2"	20'	9.8#	98128055	3"	20'	27.0#
98128015	1-1/2"	25'	12.0#	98128057	3"	25'	33.0#
98128035	2"	15'	10.5#	98128058	4"	15'	34.0#
98128040	2"	20'	13.7#				
98128045	2"	25'	16.8#				
98128046	2-1/2"	20'	21.0#				

Applications: A PVC suction and discharge hose for water, light chemicals, and pumping service in the agricultural, rental, construction, marine, and irrigation industries. **Construction:** A smooth bore hose made of flexible abrasion resistant extruded PVC with a rigid PVC helix.

Assemblies: Coupled with male x female aluminum short shanks with Band-It® clamps. **Temp. Range:** -10°F to 130°F (under static conditions).

W.P. and M.B.R.: Applicable @68°F. **Assemblies in other lengths and coupling options available upon request.**

WARNING: For undiluted chemicals, contact Apache customer service for hose recommendations.



TRANSFER PUMP HOSE KITS



1" I.D. KIT WITH POLYPROPYLENE FITTINGS

Apache P/N	Wt. Ea.	
98128609	9.25#	

KIT INCLUDES ONE EACH OF THE FOLLOWING:

1" I.D. x 20' PVC suction hose coupled 1" Polypropylene FSPT; 1" I.D. x 25' PVC discharge hose coupled 1" Polypropylene MxFSPT; 1" MPT poly suction strainer. **Applications:** For general water transfer around the home, shop and farm. Drain garden ponds and swimming pools, water large areas when landscaping, control brush burns, light flooding (drain basements and excavations). **Packaged:** Kraft box with a full color label.



1-1/2" & 2" I.D. KIT WITH ALUMINUM FITTINGS

Apache P/N	I.D.	Wt. Ea.
98128612	1-1/2"	19.0#
98128615	2"	25.0#

KIT INCLUDES ONE EACH OF THE FOLLOWING:

1" I.D. x 20' PVC suction hose coupled 1" Polypropylene FSPT; 1" I.D. x 25' PVC discharge hose coupled 1" Polypropylene MxFSPT; 1" MPT poly suction strainer. **Applications:** For general water transfer around the home, shop and farm. Drain garden ponds and swimming pools, water large areas when landscaping, control brush burns, light flooding (drain basements and excavations). **Packaged:** Kraft box with a full color label.



2" I.D. KIT WITH POLYPROPYLENE QUICK COUPLERS

Apache P/N	Wt. Ea.
98128600	25.0#

KIT INCLUDES ONE EACH OF THE FOLLOWING:

2" I.D. x 20' PVC suction hose coupled 2" C Poly x Poly K.C. nipple; 2" I.D. x 25' PVC discharge hose coupled 2" C Poly, one end only; 2" 90° F Poly coupling, 2" F Poly coupling, and 2" Poly strainer. **Applications:** Pump out basements, excavations, water crops or lawns, spray agricultural liquids, or use for swimming pool maintenance. **Packaged:** Kraft box with a diagram label listing of enclosed items.



2" I.D. KIT WITH ALUMINUM & POLYPROPYLENE FITTINGS

Apache P/N	Wt. Ea.
98128604	25.0#

KIT INCLUDES ONE EACH OF THE FOLLOWING:

2" I.D. x 20' PVC suction hose coupled male x female aluminum short shank; 2" I.D. x 25' PVC discharge hose coupled male x female aluminum short shank; 2" 90° Poly male x female elbow; 2" Poly male x male nipple; and 2" Poly strainer. **Applications:** Pump out basements, excavations, water crops or lawns, spray agricultural liquids, or use for swimming pool maintenance. **Packaged:** Kraft box with a diagram label listing of enclosed items.



3" & 4" I.D. KIT WITH ALUMINUM FITTINGS

Apache P/N	I.D.	Wt. Ea.
98128660	3"	42.0#
98128665	4"	54.0#

KIT INCLUDES ONE EACH OF THE FOLLOWING:

15' PVC suction hose coupled male x female aluminum short shank; 25' PVC discharge hose coupled male x female aluminum short shank; plated steel strainer. **Applications:** For the large volume transfer of water in agricultural, construction, industrial, municipal/government, and rental applications; dewatering excavations, flood water removal, trash applications, and field irrigation. **Packaged:** Kraft box with a full color label.

TRASH PUMP KITS ALSO AVAILABLE

Call 1-800-553-5455 for details

PVC LAY FLAT DISCHARGE HOSE (BLUE)



Coupled Aluminum Short Shank



Coupled Poly Cam and Groove

ASSEMBLIES

CPLD. ALUM M x F SHORT SHANK w/BAND-IT® CLAMPS

BULK HOSE

Apache P/N	I.D.	Length	W.P.	Wt. 100'	Apache P/N	I.D. x Length	Wt. Ea.
13026504	1-1/4"	300'	80#	14#	98138010	1-1/2" x 25'	4.2#
13026505	1-1/2"	300'	75#	14#	98138040	2" x 25'	5.3#
13027005	2"	300'	70#	17#	98138060	3" x 25'	10.0#
13027501	2-1/2"	300'	60#	22#	98138072	4" x 25'	13.9#
13028001	3"	300'	55#	28#	98138095	6" x 25'	25.2#
13028508	4"	300'	55#	36#	98138015	1-1/2" x 50'	8.0#
13029008	6"	300'	50#	65#	98138045	2" x 50'	10.2#
13029504	8"	300'	40#	110#	98138065	3" x 50'	19.5#
13030006	10"	100'	35#	200#	98138075	4" x 50'	26.4#
13030008	12"	100'	35#	243#	98138100	6" x 50'	49.8#

Applications: Discharge hose for water, light chemicals, and pumping service in the agricultural, rental, construction, marine, and irrigation industries. Recommended for open-end discharge, connect to the discharge side of pump system only. **Construction:** Tube/cover are PVC, reinforced with 3 ply polyester yarns, one longitudinal ply and two spiral plies. Both tube/cover are extruded simultaneously to obtain maximum bonding.

Assemblies: Coupled with male x female aluminum short shanks with Band-It® clamps. **Features:** Strong, lightweight, non-water absorbing, and mildew proof hose that rolls up flat for easy storage. Resistant to oils, grease, many chemicals, and acids.

Temp. Range: -5°F to 130°F. **Assemblies in other lengths and coupling options available upon request.**

Warning: Coupling shank type and method of attachment can reduce the working pressure of the assembly to less than the hose's maximum working pressure.

MEDIUM DUTY PVC LAY FLAT DISCHARGE HOSE (BROWN)



ASSEMBLIES

CPLD. ALUM M x F SHORT SHANK w/BAND-IT® CLAMPS

BULK HOSE

Apache P/N	I.D.	Length	W.P.	Wt. 100'	Apache P/N	I.D. x Length	Wt. Ea.
13030014	1-1/2"	300'	120#	21.3#	98138120	1-1/2" x 25'	6.0#
13030022	2"	300'	120#	28.3#	98138126	2" x 25'	8.2#
13030030	2-1/2"	300'	120#	39.6#	98138138	3" x 25'	16.2#
13030049	3"	300'	120#	52.6#	98138144	4" x 25'	23.6#
13030103	4"	300'	120#	75.0#	98138150	6" x 25'	40.3#
13030154	6"	300'	120#	125.0#	98138124	1-1/2" x 50'	11.6#
13030175	8"	300'	90#	188.6#	98138129	2" x 50'	15.6#
					98138141	3" x 50'	29.7#
					98138147	4" x 50'	41.9#
					98138153	6" x 50'	72.2#

Applications: Discharge hose for water, light chemicals, and pumping service in the agricultural, rental, construction, mining, marine, and irrigation industries. Recommended for open-end discharge, connect to the discharge side of pump system only. **Construction:** Tube/cover are PVC, reinforced with 3 ply polyester yarns, one longitudinal ply and two spiral plies. Both tube/cover are extruded simultaneously to obtain maximum bonding.

Assemblies: Coupled with male x female aluminum short shanks and Band-It® clamps. **Features:** Strong, lightweight, non-water absorbing, and mildew proof hose that rolls up flat for easy storage. Resistant to oils, grease, many chemicals, and acids. **Temp. Range:** -5°F to 130°F.

Flame Resistant: USMSHA IC-150/1 (size 1-1/2", 2", and 2-1/2"). **W.P.:** Applicable @70°F.

Assemblies in other lengths and coupling options available upon request.

Warning: Coupling shank type and method of attachment can reduce the working pressure of the assembly to less than the hose's maximum working pressure.

MILL WASH DOWN / DISCHARGE HOSE



Special Order 100'
Bulk Lengths
Call 1-800-553-5455

BULK HOSE

Apache P/N	I.D. x Length	W.P.	Wt. Ft.	Apache P/N	I.D. x Length	W.P.	Wt. Ft.
16000500	1-1/2" x 50'	112#	0.20#	16001503	3" x 50'	112#	0.42#
16000507	2" x 50'	112#	0.23#	16002003	4" x 50'	112#	0.80#
16001007	2"-1/2" x 50'	112#	0.34#	16002006	6" x 50'	112#	1.50#

ASSEMBLIES

CPLD. ALUM M x F SHORT SHANK w/BAND-IT® CLAMPS

Apache P/N	I.D. x Length	Wt. Ea.	Apache P/N	I.D. x Length	Wt. Ea.
98168078	1-1/2" x 25'	6.0#	98168080	1-1/2" x 50'	11.0#
98168085	2" x 25'	7.0#	98168090	2" x 50'	13.0#
98168095	2-1/2" x 25'	11.0#	98168097	2-1/2" x 50'	19.5#
98168098	3" x 25'	14.5#	98168100	3" x 50'	25.0#
98168108	4" x 25'	26.0#	98168110	4" x 50'	46.0#

CPLD. ALUM C x E CAM & GROOVE w/BAND-IT® CLAMPS

Apache P/N	I.D. x Length	Wt. Ea.	Apache P/N	I.D. x Length	Wt. Ea.
98168196	1-1/2" x 25'	7.0#	98168197	1-1/2" x 50'	12.0#
98168199	2" x 25'	8.0#	98168200	2" x 50'	14.0#
98168205	2-1/2" x 25'	12.0#	98168210	2-1/2" x 50'	21.5#
98168220	3" x 25'	15.0#	98168225	3" x 50'	25.5#
98168245	4" x 25'	26.5#	98168250	4" x 50'	46.5#

Applications: A lightweight, easy-to-handle general purpose hose for clean up and wash down in factories and mill yards. An ideal contractors/ industrial use discharge hose. **Construction:** 100% polyester single jacket cover. Reinforcement will not mildew or decay. Lining is weather resistant extruded synthetic rubber. **Assemblies in other lengths and coupling options available upon request.**



Coupled Aluminum Short Shank



Coupled Aluminum Cam and Groove

HEAVY-DUTY PVC LAY FLAT DISCHARGE HOSE

BULK HOSE

Apache P/N	I.D. x Length	W.P.	Wt. Ft.
13030323	4" x 100'	200#	1.24#
13030327	6" x 100'	200#	1.88#
13030330	8" x 100'	150#	2.55#

ASSEMBLIES

CPLD. ALUM M x F SHORT SHANK w/BAND-IT® CLAMPS

Apache P/N	I.D. x Length	Wt. Ea.	Apache P/N	I.D. x Length	Wt. Ea.
98138376	4" x 50'	68.0#	98138377	4" x 100'	130.0#
98138379	6" x 50'	105.0#	98138380	6" x 100'	199.0#

CPLD. ALUM C x E CAM & GROOVE w/BAND-IT® CLAMPS

Apache P/N	I.D. x Length	Wt. Ea.	Apache P/N	I.D. x Length	Wt. Ea.
98138394	4" x 50'	69.0#	98138395	4" x 100'	131.0#
98138397	6" x 50'	110.0#	98138398	6" x 100'	204.0#
98138400	8" x 50'	149.0#	98138401	8" x 100'	276.5#

CPLD. BALL & SOCKET w/BAND-IT® CLAMPS

Apache P/N	I.D. x Length	Wt. Ea.	Apache P/N	I.D. x Length	Wt. Ea.
98138403	4" x 50'	75.0#	98138404	4" x 100'	137.0#
98138406	6" x 50'	118.0#	98138407	6" x 100'	212.0#
98138409	8" x 50'	169.0#	98138410	8" x 100'	297.0#

Applications: Designed for the toughest discharge applications in construction, mining, jetting, and agriculture. Recommended for open-end discharge, connect to the discharge side of pump system only. **Construction:** Black rubber and PVC compounds with a polyester cord reinforced heavy wall, provide the ultimate in heavy-duty discharge hose. **Features:** Heavy-duty, non water absorbing and mildew proof hose that rolls up flat for easy storage and movement. **Assemblies in other lengths and coupling options available upon request.**

Warning: Coupling shank type and method of attachment can reduce the working pressure of the assembly to less than the hose's maximum working pressure.



Coupled Aluminum Short Shank



Coupled Aluminum Cam and Groove

MEDIUM-DUTY RUBBER WATER DISCHARGE HOSE



BULK HOSE

Apache P/N	I.D. x O.D.	Length	Plies	W.P.	Wt. 100'
13021007*	1-1/2" x 2"	100'	2	150#	122#
13021503*	2" x 2-1/2"	100'	2	120#	146#
13022003	2-1/2" x 3"	100'	2	100#	170#
13023506	3" x 3-1/2"	100'	2	85#	219#
13023606	4" x 4-3/4"	100'	2	75#	348#

Applications: A general service water discharge hose especially designed for the agricultural, light industrial, and construction industries. Recommended for open-end discharge, connect to the discharge side of pump system only. **Construction:** Smooth, high quality EPDM tube/cover reinforced with synthetic cord plies. **Temp. Range:** -40°F to 190°F.

Assemblies in other lengths and coupling options available upon request. *Also see 1-1/4", 1-1/2", & 2" Series 3000 EPDM Spray Hose on page 2.
WARNING: Coupling shank type and method of attachment can reduce the working pressure of the assembly to less than the hose's maximum working pressure. For undiluted chemicals, consult Apache customer service for hose recommendations.

HEAVY-DUTY RUBBER WATER DISCHARGE HOSE



BULK HOSE

Apache P/N	I.D. x O.D.	Length	Plies	W.P.	Wt. 100'
13024008	3" x 3-1/2"	100'	4	200#	146#
13024030	3-1/2" x 4"	100'	4	150#	230#
13024009	4" x 4-1/2"	100'	4	150#	219#
13024011	6" x 6-1/2"	100'	4	150#	389#
13024117	8" x 8-1/2"	100'	4	120#	510#
13024013	10" x 10-1/2"	50'	4	120#	634#

Applications: A top grade water hose for general discharge service for agricultural, construction, mining, marine, and industrial applications.

Recommended for open-end discharge, connect to the discharge side of pump system only. **Construction:** Good quality rubber tube reinforced with plies of synthetic tire cord and an abrasion and weather resistant cover. **Temp. Range:** -40°F to 190°F.

Assemblies in other lengths and coupling options available upon request.

WARNING: Coupling shank type and method of attachment can reduce the working pressure of the assembly to less than the hose's maximum working pressure. For undiluted chemicals, consult Apache customer service for hose recommendations.

APACHE MODIFIED X-LINK CHEMICAL HOSE



BULK HOSE

Apache P/N	I.D. x O.D.	Length	Suction	M.B.R.	W.P.	Wt. Ft.
12096400	3/4" x 1.25"	100'	30 in/HG	4"	200#	0.45#
12096401	1" x 1.50"	100'	30 in/HG	5"	200#	0.56#
12096402	1-1/4" x 1-15/16"	100'	30 in/HG	6"	200#	0.68#
12096403	1-1/2" x 2-3/16"	100'	30 in/HG	8"	200#	0.87#
12096404	2" x 2-13/16"	100'	30 in/HG	9"	200#	1.10#
12096405	3" x 3-29/32"	100'	30 in/HG	18"	150#	1.79#

Applications: Tank truck, barge, ship, or storage tank transfer of a variety of chemical products. Over 950 basic chemicals that are building blocks for numerous chemicals used in a variety of industries. **Construction:** Contains a wire helix for full suction capability, as well as for routing hoses through tight bends. Its modified cross-linked polyethylene tube stock is best in class for maintaining a tight seal with stainless steel fittings, and is designed for cleaning with open end 50 PSI steam or in a bath containing 10% (NaOH) at 212°F. Cleaning methods while in place may be used.

Tube: Tan modified cross-linked polyethylene. **Cover:** Green EPDM with white spiral stripe. **Reinforcement:** Synthetic high tensile textile with dual steel wire helix. **Temp. Range:** -40°F to 250°F (Check with customer service for chemical compatibility for temperatures above 125°F).

Recommended Couplings: Tri-Lokt, quick-connecting for fluid transfer up to 125°F. Permanently swaged or crimped solid male, ferrule, or cam and groove for fluid transfer.

Note: For applications requiring greater than 90% sulfuric acid contact customer service. Not recommended for "closed steam" cleaning.

APACHE UHMW HOSE (BLUE)



BULK HOSE

Apache P/N	I.D. x O.D.	Length	Plies/Braids	M.B.R.	W.P.	Wt. Ft.
12096001	1" x 1.52"	100'	2	3.5"	200#	0.63#
12096002	1-1/2" x 2.13"	100'	2	4.0"	200#	1.03#
12096003	2" x 2.64"	100'	2	6.0"	200#	1.33#
12096004	2-1/2" x 3.13"	100'	2	7.0"	200#	1.78#
12096005	3" x 3.73"	100'	2	9.0"	200#	2.12#
12096006	4" x 4.68"	100'	2	10.0"	150#	2.83#

Construction: The most flexible UHMW hose available. Durable, corrugated cover full suction and discharge hose. Clear ultra high molecular weight polyethylene tube conveys 98% of the most common chemicals without leaching/contamination. **Tube:** Clear ultra high molecular weight polyethylene (UHMW). **Cover:** Corrugated EPDM. **Reinforcement:** Textile plies with dual steel helix wires. **Temp. Range:** -40°F to 250°F (Warning! Check chemical temperature and concentration). **Recommended Couplings:** CamLok, crimped ferrules, or banded

APACHE UHMW CRUSH AND KINK RESISTANT HOSE (GREEN)



BULK HOSE

Apache P/N	I.D. x O.D.	Vac.	M.B.R.	W.P.	Wt. Ft.
12095600	1" x 1.50"	Full	4"	200#	0.49#
12095601	1-1/2" x 2.00"	Full	5"	200#	0.67#
12095602	2" x 2.66"	Full	8"	200#	1.28#
12095604	3" x 3.67"	Full	10"	200#	1.92#

Applications: Apache Crush & Kink Resistant UHMW Chemical Hose is designed to reduce hose failures due to abusive transfer applications where kinking or accidental crushing of the hose is common. With its special dual monofilament helix wire construction, this hose stands up to the most difficult applications and bounces back to its original shape. Depending on specific size, this chemical hose is lighter and easier to handle (between 4% and 65%) lighter than old fashioned UHMW chemical hoses. To utilize the maximum temperature and pressure ratings of this hose use permanently crimped couplings. **Tube:** Clear Ultra High Molecular Weight Polyethylene. **Reinforcement:** Multiple plies of polyester tire cord with dual monofilament helix wires with static wire. **Cover:** Green EPDM with orange mylar brand. **Length:** To 100'. **Temp. Range:** -40°F to +180°F (may be used at +212°F intermittent). Consult Apache Chemical Resistance Chart for chemical compatibility and temperature.

Warning: Elevated temperatures can change the chemical resistance rating of Apache Crush and Kink Resistant UHMW chemical hose. Check your Apache Chemical Resistance charts to verify that the chemical to be transferred is rated for use with the UHMW tube at the temperature and concentration listed. Most chemicals become more aggressive at higher the temperatures, reducing the ability of the tube to withstand them. Compatibility information is available from Apache. If no data exists, it is the user's responsibility to determine if the hose is compatible with the chemicals to be transferred. NEVER USE APACHE CRUSH AND KINK RESISTANT UHMW CHEMICAL HOSE ABOVE THE PRESSURE RATINGS LISTED.

NYLON TUBE CHEMICAL HOSE



BULK HOSE

Apache P/N	I.D. x O.D.	Braid	W.P.	Wt. 100'
10075202	1/4" x 0.51'	1	500#	10#
10075204	3/8" x 0.67'	1	500#	15#
10075206	1/2" x 0.86'	2	500#	26#
10075208	3/4" x 1.15'	2	750#	40#
10075505	1" x 1.50'	2	500#	56#

Applications: Recommended for use in air, water, oil base products, butane, propane, chemicals, paints, ammonia, and agricultural sprays.
Construction: Molded and vertically braided with a nylon tube reinforced by braided rayon yarn. The cover is oil resistant neoprene.

Temp. Range: -40°F to 150°F

AG CHEMICAL TRANSFER PUMP HOSE



ASSEMBLIES

Apache P/N	I.D. x FT.	Spiral	Fittings	Color	Wt. 100'
98108992	1" x 12'	4	Poly	Red	6.5#
98108993	1" x 14'	4	Poly	Red	7.6#
98108743	1" x 12'	2	Die Cast Steel	Black	7.0#

Applications: General purpose EPDM chemical transfer pump hose for various agricultural herbicides and insecticides. Consult Apache for resistance to specific undiluted chemicals. Hose has limited oil resistance. **Construction:** EPDM cover with a black tube, reinforced with multi-spiral polyester yarn. **Poly Coupled:** Male pipe thread hex head hose barbs with 5/8" wide smooth I.D. clamp on each end.

Die Cast Coupled: Male pipe thread hex head hose barbs with crimp-on aluminum ferrules on each end.

WARNING: Not for transfer of anhydrous ammonia.

ANHYDROUS AMMONIA HOSE - NYLON



ASSEMBLIES SERIES 7262

Apache P/N	I.D. x Feet	Apache P/N	I.D. x Feet	Apache P/N	I.D. x Feet	Apache P/N	I.D. x Feet
98108005	1/2" x 2'	98108190	3/4" x 25'	98108240	1" x 9'	98108340	1-1/4" x 8'
98108015	1/2" x 3'	98108195	3/4" x 30'	98108245	1" x 10'	98108350	1-1/4" x 9'
98108020	1/2" x 4'	98108202	3/4" x 50'	98108247	1" x 10.5'	98108355	1-1/4" x 10'
98108025	1/2" x 5'	98108203	1" x 1.46'	98108250	1" x 12'	98108360	1-1/4" x 12'
98108030	1/2" x 6'	98108204	1" x 1.63'	98108255	1" x 12.5'	98108365	1-1/4" x 12.5'
98108035	1/2" x 8'	98108208	1" x 1.67'	98108258	1" x 13'	98108370	1-1/4" x 14'
98108045	1/2" x 10'	98108214	1" x 1.83'	98108260	1" x 14'	98108375	1-1/4" x 15'
98108050	1/2" x 12'	98108205	1" x 2'	98108265	1" x 15'	98108380	1-1/4" x 16'
98108065	1/2" x 15'	98108210	1" x 2.5'	98108270	1" x 16'	98108390	1-1/4" x 18'
98108070	1/2" x 16'	98108211	1" x 2.7'	98108275	1" x 17'	98108395	1-1/4" x 20'
98108085	1/2" x 20'	98108212	1" x 2.8'	98108280	1" x 18'	98108400	1-1/4" x 25'
98108090	1/2" x 25'	98108215	1" x 3'	98108290	1" x 25'	98108405	1-1/4" x 30'
98108095	1/2" x 30'	98108218	1" x 3.5'	98108295	1" x 30'	98118005	1-1/2" x 12'
98108100	1/2" x 50'	98108219	1" x 3.75'	98108305	1-1/4" x 2'	98118030	1-1/2" x 20'
98108125	3/4" x 5'	98108220	1" x 4'	98108310	1-1/4" x 2.5'	98118045	2" x 12'
98108130	3/4" x 6'	98108223	1" x 4.5'	98108315	1-1/4" x 2.7'	98118060	2" x 15'
98108145	3/4" x 10'	98108225	1" x 5'	98108317	1-1/4" x 2.8'	98118065	2" x 18'
98108155	3/4" x 12.5'	98108230	1" x 6'	98108320	1-1/4" x 3'	98118067	2" x 19'
98108160	3/4" x 14'	98108233	1" x 7'	98108325	1-1/4" x 4'	98118070	2" x 20'
98108170	3/4" x 16'	98108235	1" x 8'	98108330	1-1/4" x 5'	98118075	2" x 30'
98108185	3/4" x 20'	98108236	1" x 8.7'	98108335	1-1/4" x 6'		

Construction: Designed to handle anhydrous ammonia to 350 P.S.I. working pressure with a 5:1 safety factor (1750 P.S.I. minimum burst).

Degradation resistant, nylon reinforcement provides flexibility with high tensile strength. High quality synthetic compound cover provides excellent ozone and abrasion resistance. Compatible with N-Serve® when used in recommended concentrations. Meets or exceeds RMA/TFI/ANSI. **Tube:** High quality synthetic compound. **Cover:** Perforated black with green stripe. **Reinforcement:** Multiple nylon braids. **Temp. Range:** -40°F to 180°F.

Branding: (Side 1 embossed) Parker Dayco USA 7262 Nylon Anhydrous Ammonia - (mfg. year) - Remove No Later Than (year) - 350 P.S.I. MAX W.P. RMA (s/n) - Caution Anhydrous Ammonia Use Only. (Side 2) Green identification stripe. **Length:** Various lengths on reels for 1/2" to 1". Various 45'-100' lengths for 1-1/4" to 2". **Fittings:** Series 7661 or Parker Dayco hydraulic crimp couplings. **Usage:** This hose provides the flexibility required for farm or field applications.

WARNING: For anhydrous ammonia use only. Do not use in LPG, natural gas or refrigeration applications. Do not use with male swivel couplings.

Contact Apache for additional sizes and lengths.

ANHYDROUS AMMONIA HOSE – STAINLESS STEEL



**ASSEMBLIES
SERIES 7261**

Apache P/N	I.D. x Feet	Apache P/N	I.D. x Feet	Apache P/N	I.D. x Feet	Apache P/N	I.D. x Feet
98118085	1" x 2'	98118150	1" x 16'	98118230	1-1/4" x 12'	98118365	1-1/2" x 20'
98118090	1" x 2.5'	98118160	1" x 18'	98118235	1-1/4" x 12.5'	98118370	1-1/2" x 25'
98118095	1" x 3'	98118165	1" x 20'	98118240	1-1/4" x 14'	98118375	1-1/2" x 30'
98118100	1" x 4'	98118192	1-1/4" x 2.7'	98118245	1-1/4" x 15'	98118383	2" x 8'
98118105	1" x 5'	98118195	1-1/4" x 3'	98118250	1-1/4" x 16'	98118385	2" x 12'
98118125	1" x 10'	98118200	1-1/4" x 4'	98118260	1-1/4" x 18'	98118400	2" x 15'
98118130	1" x 12'	98118205	1-1/4" x 5'	98118265	1-1/4" x 20'	98118403	2" x 16'
98118135	1" x 12.5'	98118210	1-1/4" x 6'	98118270	1-1/4" x 25'	98118405	2" x 18'
98118140	1" x 14'	98118215	1-1/4" x 8'	98118275	1-1/4" x 30'	98118410	2" x 20'
98118145	1" x 15'	98118225	1-1/4" x 10'	98118345	1-1/2" x 15'	98118412	2" x 25'

Construction: Designed to handle anhydrous ammonia to 350 P.S.I. working pressure with a 5:1 safety factor (1750 P.S.I. minimum burst). Degradation resistant, nylon reinforcement provides flexibility with high tensile strength. High quality synthetic compound cover provides excellent ozone and abrasion resistance. Compatible with N-Serve® when used in recommended concentrations. Meets or exceeds RMA/TFI/ANSI. **Tube:** High quality synthetic compound. **Cover:** Perforated black with silver stripe. **Reinforcement:** Stainless steel and nylon braids. **Temp. Range:** -40°F to 180°F. **Branding:** (Side 1 embossed) Parker Dayco USA 7261 SS Anhydrous Ammonia - (mfg. year) - Remove No Later Than (year) - 350 P.S.I. MAX W.P. RMA (s/n) - Caution Anhydrous Ammonia Use Only. (Side 2) Silver identification stripe. **Length:** Various lengths on reels for 1/2" to 1". Various 45'-100' lengths for 1-1/4" to 2". **Fittings:** Series 7661 or Parker Dayco hydraulic crimp couplings. **Usage:** This hose provides the flexibility required for farm or field applications.
WARNING: For anhydrous ammonia use only. Do not use in LPG, natural gas or refrigeration applications. Do not use with male swivel couplings. Contact Apache for additional sizes and lengths.

ANHYDROUS AMMONIA HOSE CARE AND MAINTENANCE



IMPORTANT – READ CAREFULLY

Anhydrous Ammonia hose has a limited life and the user must be alert to signs of impending failure. Periodic inspection and testing, as described in Rubber Manufacturers Association (RMA) publication: IP-11-2, Anhydrous Ammonia Hose Manual for Maintenance, Testing, and Inspection, is recommended to detect signs indicating hose deterioration or loss of performance before conditions leading to malfunction or failure are reached. All new hose assemblies should be inspected prior to use to determine if they have been damaged in storage or shipment. Hose subjected to severe usage - for example: dragging over sharp rock surfaces, or sharply bent in storage or continually exposed to weather - will deteriorate more rapidly than carefully handled hose. The hose should be visually inspected each day before use.

INSPECTION PROCEDURE:

Lay out the full length of the hose in a clean and preferably dry area. Inspect the outside cover of the hose for blistering, excessive abrasion or cuts, and coupling slippage. (This inspection should be made when the hose is not under pressure.)

1. Cuts in hose cover which expose or damage the reinforcement are cause for immediate replacement. Small cuts, nicks, or gouges in the cover, which do not go completely through the cover, are not cause for replacement of the hose. Hose strength is controlled by the plies of reinforcement, and for this reason, damage in this area cannot be tolerated.
Note: Pricking the hose cover is necessary for satisfactory hose performance. A uniformly pricked cover should not be viewed with alarm.
2. Damage to the textile or wire braid is cause for immediate hose replacement. Wire braid reinforced hose that has been kinked or flattened, permanently deforming the wire braid in the depressurized state, should be removed from service.
3. A blistered or loose outer cover is cause for immediate hose replacement.
4. Examine couplings for slippage. Only permanently attached fittings are to be used with anhydrous ammonia hose. Bolted on or clamped on fittings must not be used. Slippage is evidenced by the misalignment of the hose and coupling and/or the scored or exposed area where slippage has occurred. Any evidence of slippage is cause for immediate hose replacement.

WARNING: A failure in service can result in injury to personnel or damage to property. Do not use at temperatures or pressures above those recommended by Parker Dayco. Anhydrous ammonia is extremely volatile - and poisonous - in both liquid and gaseous (vapor) states. Contact with either state of anhydrous ammonia will burn skin, and is especially damaging to the eyes and lungs. Improper hose applications or failure to inspect the hose may lead to life-threatening situations - poisonous gas leakages, fires, or explosions. Do not use anhydrous ammonia hose for LP gas, natural gas or refrigeration applications. Do not use with male swivel couplings. Do not use LP gas hose for anhydrous ammonia applications.

Assemblies are available with stainless steel or nylon reinforcement and come with 2 male x male crimp-on fittings. Apache coupled hoses carry a PRORATED WARRANTY.

Note: Warranty on bulk anhydrous ammonia hose is valid ONLY when coupled by a Parker Dayco certified coupler, using Parker Dayco specified couplings.



Our Circle of Safety program establishes Parker's Industrial Hose Division as a single, accountable source with a specific performance guarantee to protect distributors and end users from accidents, unplanned downtime and increased liability associated with failed industrial hose assemblies.

SMART-HOSE™ SAFETY SYSTEMS FOR NH3 AND LPG

The World's Safest Hose Assembly

The Smart-Hose™ safety system features a unique, patented design that eliminates the potential for catastrophic consequences resulting from the uncontrolled release of product due to coupling ejection, hose stretching to an unsafe condition and/or hose separation. Each Smart-Hose™ assembly utilizes a plunger, wedge or flapper valve to shut off the flow of product instantly in both directions in these instances.

FEATURES

- Maintenance Free
- User Friendly
- Simplicity - No training necessary and no maintenance required. It always works and Smart-Hose™ technology lowers maintenance costs as compared to expensive valves and secondary containment concepts.
- History - Over 300,000 hoses using this technology are in service.

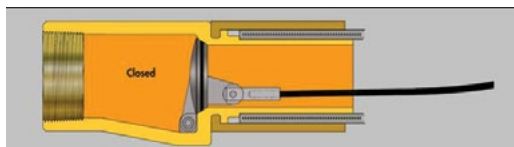
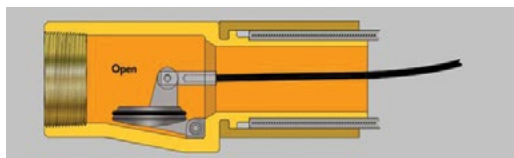
HOW DOES IT WORK

Smart-Hose™ incorporates a coated cable within the hose bore that is connected to the valve plunger, wedges or flapper. This cable acts as a compression spring providing thrust in the direction of both ends of the hose, holding the plunger, wedges, or flapper valves open. Should this thrust be eliminated due to coupling ejection, hose stretching, or hose separation, the valve plunger, wedges, or flappers are released and instantly seat, stopping the flow in both directions.

Applications:

Chemical Processing • Petroleum Processing • Rail Car Loading/Unloading • Ship to Shore Loading • Chlorine Pharmaceutical Food Processing • Hydraulic • Steam Transfer • Compressed Gas

Contact Apache for the hose to fit your application.



SMART-HOSE™ DOT HOSE ASSEMBLIES



NH3-TEXTILE REINFORCED

Apache P/N	I.D. x Length	Wt. Ea.
11035509	1-1/4" x 19'	30.0#
11035650	2" x 18.5'	46.0#

Applications: For the transfer of NH3 in bulk storage tanks and bulk truck services. Each assembly is tested under water to check pressure.

Construction: 350 P.S.I., Low permeation rubber compound is reinforced with high strength nylon textile. Abrasion and weather resistant compound. Coupled female pipe thread. **Temp. Range:** -40°F to 180°F **Other I.D. / Lengths Available:** 1" - 2" I.D. textile reinforced **Note:** Smart-Hose™ recommends the use of spiral wear sleeve to prolong hose life.



LPG

Apache P/N	I.D. x Length	Wt. Ea.
11036010	1-1/4" x 19'	30.0#
11037050	2" x 18.5'	46.0#

Applications: For transfer of LPG in bulk storage tanks and bulk truck services. UL-21 approved. Lifeline safety system attached. Each assembly is tested and certified to DOT requirements, test certificate is enclosed with each hose. **Construction:** 350 P.S.I., oil resistant, withstands petroleum gas penetration. High strength textile reinforcement, abrasion and weather resistant compound. Coupled female pipe thread. **Temp. Range:** -40°F to 180°F **Other I.D. / Lengths Available:** 1" - 3" I.D. textile reinforced and 1" - 4" I.D. SS metal hose.



HOSE CONNECTIONS - BRASS / STEEL

Apache P/N	Description	Wt. Ea.
39045012	1-1/4" Steel NH3 (gray nut)	1.8#
39045022	2" Steel NH3 (gray nut)	3.9#
39045014	1-1/4" Brass LPG	1.9#
39045024	2" Brass LPG	4.2#

Vapor Line Filler Couplings: Female ACME x Male Pipe Thread



DUST PLUG w/RING AND CHAIN - YELLOW PLASTIC

Apache P/N	Description	Wt. Ea.
39045074	2-1/4" for 1-1/4" Hose (ACME)	1.5 oz.
39045080	3-1/4" for 2" hose (ACME)	4.1 oz.

Spiral wear sleeve is available for all hose. Protective wrapping is the perfect outside hose protection for transport hose to resist the effects of abrasion, (due to pump vibration) cutting, and gouging. **Also available in 1". See page 19 for LPG hose assemblies.**



SMARTHOSE UHMW HOSE



Applications: Used for the transfer of petroleum based products in all types of service conditions. **Construction:** All purpose rubber compound cover with excellent ozone and weather resistance. UHMPW (Ultra High Molecular Weight Polyethylene) tube compound designed to resist the effects of common industrial chemicals. Spiral wire helix between plies of synthetic fabric provides reinforcement. Available in 1"-4" I.D.

Temp. Range: -25°F to 200°F.

DUCTING



**BULK HOSE
GPE**

Apache P/N	I.D.	Length	Wt. Ft.
14010313	2-1/2"	50'	0.24#
14010314	3"	50'	0.30#
14010315	4"	50'	0.40#

Application: Suited for low pressure air movement and fume extraction applications such as insulation blowing, dust collection, also used as bilge pump hose. Excellent for light vacuum applications. **Construction:** Very flexible and lightweight polyethylene.

HT / COTTON PICKING

Apache P/N	I.D.	Length	Wt. Ft.
14050218	4"	25'/50'	0.72#
14050222	6"	25'/50'	1.05#
14050224	8"	25'/50'	1.40#

Application: Suitable for more demanding positive and negative pressure applications such as lawn/leaf/dust collection, straw blowing, fertilizer broadcasting, powder, and bulk material handling. **Construction:** Resistant to abrasion, ozone, UV rays, chemicals and weathering. Very flexible and lightweight hose with true rubber like qualities with a steel wire helix reinforcement.

UFD

Black Apache P/N	Clear Apache P/N	I.D. x O.D.	Length	M.B.R.	W.P.	Wt. Ft.
14010640	14010588	2" x 2.29"	25'/50'	2.5"	33#	0.28#
14010642	14010593	3" x 2.79"	25'/50'	3.0"	30#	0.42#
14010644	14010595	4" x 3.32"	25'/50'	3.5"	27#	0.53#
	14010597	5" x 4.34"	25'/50'	4.5"	18#	0.69#
14010646	14010598	6" x 5.34"	25'/50'	5.5"	16#	0.81#

Application: Suitable for more demanding positive and negative pressure applications such as lawn/leaf/dust collection, straw blowing, fertilizer broadcasting, powder, and bulk material handling. **Construction:** Resistant to abrasion, ozone, UV rays, chemicals and weathering. Very flexible and lightweight hose with true rubber like qualities with a steel wire helix reinforcement.

AIR SEEDER / DUCTING HOSE (GRAY)



BULK HOSE

Apache P/N	I.D. x O.D.	Length	M.B.R.	W.P.	Wt. 100'
12026190	2" x 2.42"	100'	4.0"	27#	45#
12026191	2-1/2" x 3.00"	100'	5.0"	25#	65#
12026192	3" x 3.59"	100'	6.0"	24#	89#
12026193	4" x 4.68"	100'	7.0"	22#	127#

Applications: Air and corrosive atmosphere ducting. Not recommended for abrasive service. **Construction:** EPDM with a polyethylene helix. **Temp. Range:** -30°F to 140°F. **W.P. and M.B.R. (continuous service):** Applicable @68°F.

GRAINVAC HOSE



**BULK HOSE
L-18 RUBBER DUCT**

Apache P/N	I.D. x O.D.	Length	M.B.R. @ 68°F	W.P. @ 68°F	Wt. 100'
12026740	2" x 2.37"	100'	4.0"	35#	49#
12026741	3" x 3.48"	100'	6.0"	30#	91#
12026742	4" x 4.55"	100'	9.0"	25#	145#
12026750	5" x 5.65"	100'	10.0"	25#	208#
12026752	6" x 6.78"	100'	12.0"	25#	286#

Applications: Designed for lightweight material that can be moved by air, such as rockwool, fiberglass, dust, etc. Suitable for dust control in wood working, grain/cement handling, and as ventilation ducting where dust is a work hazard. **Construction:** Abrasion resistant rubber compounds to dissipate static with a rigid PVC helix. **Temp. Range:** -30°F to 140°F.

R-18 RUBBER SUCTION

Apache P/N	I.D. x O.D.	Length	M.B.R. @ 68°F	W.P. @ 68°F	Wt. 100'
12026791	1-1/2" x 1.88"	100'	3.0"	50#	38#
12026792	2" x 2.41"	100'	4.0"	40#	54#
12026793	2-1/2" x 2.98"	100'	5.0"	35#	77#
12026794	3" x 3.54"	100'	6.0"	35#	105#
12026795	3-1/2" x 4.04"	100'	8.0"	30#	125#
12026796	4" x 4.65"	100'	8.0"	30#	168#
12026798	5" x 5.77"	100'	9.0"	30#	240#
12026800	6" x 6.86"	100'	12.0"	25#	321#
12026802	8" x 9.10"	50'	16.0"	25#	577#

Applications: Designed for lightweight material that can be moved by air, such as rockwool, fiberglass, dust, etc. Suitable for dust control in wood working, grain/cement handling, and as ventilation ducting where dust is a work hazard. **Construction:** Abrasion resistant rubber compounds to dissipate static with a rigid PVC helix. **Temp. Range:** -30°F to 140°F.

FARM FUEL TRANSFER HOSE – w/STATIC WIRE



ASSEMBLIES

Apache P/N	I.D. x Length	Wt. Ea.	Apache P/N	I.D. x Length	Wt. Ea.
98108445	3/4" x 8'	2.6#	98108470	1" x 8'	4.6#
98108450	3/4" x 10'	4.0#	98108475	1" x 10'	5.8#
98108455	3/4" x 12'	5.0#	98108480	1" x 12'	7.0#
98108460	3/4" x 14'	6.0#	98108485	1" x 14'	8.0#
98108465	3/4" x 15'	7.0#	98108490	1" x 15'	9.0#
98108468	3/4" x 20'	6.5#	98108495	1" x 20'	11.1#

Applications: Required for use with 12 or 110 volt "Electric" pumps. Recommended for dispensing gasoline, up to 15% ethanol, diesel fuel, kerosene, and oil. Not recommended for bio-diesel. **Construction:** Oil resistant tube/cover. Spiral reinforced with synthetic yarn. Includes static wire built into hose wall. **Assemblies:** Coupled male x male with a built in "static wire" to dissipate static electricity associated with electric pumps. 8" internal "spring guards" on each end, prevents the hose from kinking at the coupling, extending the life of the hose three to four times.

WARNING: Not for commercial pump use, or where UL approval is required.

CURB PUMP HOSE



ASSEMBLIES

SOFT WALL: CPLD. MALE x MALE

Apache P/N	I.D. x Length	W.P.	Wt. Ea.	Apache P/N	I.D. x Length	W.P.	Wt. Ea.
98108610	3/4" x 10'	200#	3.7#	98108646	1" x 10'	150#	5.0#
98108620	3/4" x 12'	200#	4.3#	98108648	1" x 12'	150#	5.8#
98108635	3/4" x 15'	200#	4.3#	98108650	1" x 14'	150#	6.6#
98108638	3/4" x 16'	200#	5.7#	98108651	1" x 15'	150#	7.0#
98108643	3/4" x 18'	200#	6.2#	98108652	1" x 16'	150#	7.5#
98108645	3/4" x 20'	200#	6.9#	98108656	1" x 18'	150#	8.3#
				98108658	1" x 20'	150#	9.2#

Application: Designed for curb pump self serve stations and highly sensitive electronic fuel pumps. **Construction:** Tube is NBR reinforced with a spiral polyester cord. Cover is oil and weather resistant. UL 330/ULC approved. **Assemblies:** Coupled with MPT internally expanded fittings that are capped to protect the threads. Assemblies tested for static conductivity.

HARD WALL: CPLD. MALE x MALE

Apache P/N	I.D. x Length	W.P.	Wt. Ea.	Apache P/N	I.D. x Length	W.P.	Wt. Ea.
98108675	3/4" x 10'	250#	4.8#	98108711	1" x 10'	150#	6.0#
98108685	3/4" x 12'	250#	5.7#	98108712	1" x 12'	150#	7.0#
98108695	3/4" x 14'	250#	6.6#	98108713	1" x 14'	150#	8.0#
98108703	3/4" x 16'	250#	7.4#	98108715	1" x 16'	150#	9.0#
98108710	3/4" x 20'	250#	9.2#	98108718	1" x 20'	150#	11.1#

Application: Designed for curb pump self serve stations and highly sensitive electronic fuel pumps. Recommended up to 15% ethanol. Not recommended for bio-diesel. **Construction:** Tube is NBR reinforced with one-wire braid. Cover is oil and weather resistant. UL 330/ULC approved. **Assemblies:** Coupled with MPT internally expanded fittings that are capped to protect the threads. Assemblies tested for static conductivity.



FUEL NOZZLES



AUTO SHUT-OFF NOZZLES

Apache P/N	Description	Spout	Flo Rate GPM @ 43.5 psi	Wt. Ea.
99000247	1" Female Pipe Thread - Diesel Nozzle/Green UL	1-3/16"	29.062	3.50#
99000246	3/4" Female Pipe Thread - Unleaded Nozzle/Red UL	13/16"	14.531	2.60#
99000239	3/4" Female Pipe Thread - Farm Fuel Nozzle/Blue UL	15/16"	15.852	2.45#

Application: Designed for fuel applications requiring an auto shut-off. For use with gasoline, 15% ethanol, methanol and gasoline blends, and diesel fuel. **Construction:** Inlet: 3/4" female pipe thread* and 1" female pipe thread (diesel). Hold-open handle clip for fast, effortless filling. Small, trim, and lightweight with a low profile aluminum body and a full hand insulator that protects the vehicle from scratches and nicks, and insulates hand when in use. UL listed. **Features:** A minimum of 10 P.S.I. is required to operate the auto shut-off. Do not use on gravity flow systems. *(Unleaded and farm).

MANUAL (GRAVITY FLOW NOZZLES)

Apache P/N	Description	Wt. Ea.
99000228	3/4" Female Pipe Thread Swivel with 15/16" Spout UL	2.1#
99000229	1" Female Pipe Thread Swivel with 15/16" Spout UL	2.1#

Application: Designed for fueling off-road and farm equipment from a gravity flow tank. For use with gasoline, kerosene, diesel, and most petroleum based products. **Construction:** 1" Female pipe thread inlet includes a 3/4" female reducer adapter. Lightweight aluminum body, full flow nozzle shuts-off with minimal line shock. UL listed.



FUEL PRODUCT KITS

Apache P/N	Description	Wt. Ea.
99000275	1" Manual Fuel Products Kit	10.4#
99000276	3/4" Manual Fuel Products Kit	7.4#
99000277	1" Automatic Fuel Products Kit	13.0#
99000278	3/4" Automatic Fuel Products Kit	9.0#

Applications: Required for use with 12 or 110 volt "electric" pumps. Recommended for dispensing gasoline, up to 15% ethanol, diesel fuel, kerosene and oil. Not recommended for bio-diesel. **Kits Include:** Farm fuel transfer hose with static wire, nozzle splash guard, UL approved manual or automatic nozzle. Swivel included in automatic kits.



Manual fuel kit



1" Auto fuel kit



3/4" Auto fuel kit

FUEL NOZZLE ACCESSORIES

HOSE BREAKAWAYS (SINGLE USE)

Apache P/N	Description	Wt. Ea.
99000235	3/4" Fuel Breakaway 801	1.05#
99000236	1" Fuel Breakaway 803	1.65#

Application: Whip hose and breakaway system installs between the fuel tank/supply and fill hose/nozzle. If an accidental pull-away occurs, the fuel saver separates and seals off the fuel line on both sides of the breakaway, helping to prevent major fuel spills, equipment damage, costly downtime and fires. Hose breakaway requires 200# of pull-away force to separate. Universal Fuel Saver will operate on gravity flow and 12 or 15 volt systems.

NOZZLE HOOKS

Apache P/N	Description	Wt. Ea.
99000241	Unleaded - 3/4" O.D. Spout	0.6#
99000249	Diesel - 1" O.D. Spout	0.8#

Application: Designed for use with auto shut off fuel nozzles. Creates a safe/clean way to store nozzle. Quick and easy installation. **Construction:** Metal with Allen screw attachment.

BUSHINGS - NOZZLE TO HOSE

Apache P/N	Description	Wt. Ea.
99000270	3/4" Female to 1" Male	0.28#
99000271	1" Female to 3/4" Male	0.40#

Application: Designed for use with auto shut off fuel nozzles. Creates a safe/clean way to store nozzle. Quick and easy installation. **Construction:** Metal with Allen screw attachment.



Nozzle hook / Bushings

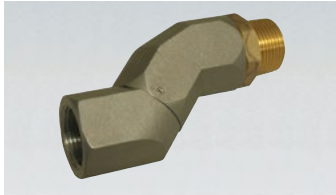
FUEL NOZZLE ACCESSORIES CONTINUED



NOZZLE SPLASH GUARDS

Apache P/N	Description	Color	Wt. Ea.
99000244	Manual or Farm Fuel Splash Guard	Blue	0.12#
99000245	Unleaded Splash Guard	Red	0.12#
99000248	Diesel Splash Guard	Green	0.12#

Application: Helps prevent splashback during nozzle use. Installs easily over nozzle spout.



FUEL SWIVEL

Apache P/N	Description	Wt. Ea.
99000233	3/4" Swivel	0.60#
99000234	1" Swivel	0.70#

Application: Designed for use with most 3/4" and 1" fuel nozzle-hose assemblies respectively. Swivels allow for freer movement and ease while using a fuel nozzle-hose assembly by preventing twisting, binding, and kinking of fuel hoses.

ADDITIONAL PETROLEUM HOSES AVAILABLE

TANK TRUCK HOSE • VAPOR RECOVERY HOSE

Call 1-800-553-5455 for details

LPG HOSE



BULK HOSE STANDARD

Apache P/N	I.D. x O.D.	Spiral	M.B.R.	W.P.	Wt. 100'
10080500	1/4" x 37/64"	4	N/A	350#	13#
10081009	3/8" x 3/4"	4	N/A	350#	21#
10081505	1/2" x 15/16"	4	N/A	350#	30#
10082005	3/4" x 1-1/4"	4	N/A	350#	43#
10082501	1" x 1-1/2"	4	N/A	350#	58#
11036007	1-1/4" x 1-13/16"	4	8.0"	350#	92#
11036503	1-1/2" x 2-1/8"	4	9.0"	350#	103#
11037003	2" x 2-3/4"	4	12.0"	350#	167#

ASSEMBLIES STANDARD

Apache P/N	I.D. x Length	Wt. Ea.
98108582	1/2" x 10'	3.0#
98108583	1/2" x 25'	7.5#
98108584	1/2" x 50'	15#
98108585	1/2" x 100'	30#
11037020	1" x 100'	60#
11037025	1" x 125'	75#
11037030	1" x 150'	87#



Standard Assembly

BULK HOSE LOW TEMP

Apache P/N	I.D. x O.D.	Spiral	W.P.	Wt. 100'
10082450	1" x 1-1/2"	4	350#	58#

ASSEMBLIES LOW TEMP

Apache P/N	I.D. x Length	Wt. Ea.
11037031	1" x 100'	60#
11037033	1" x 125'	75#
11037035	1" x 150'	87#



Low Temp Assembly

Applications: A flexible, heavy-duty, high pressure hose for handling LPG. 1/4" and 3/8" sizes are used on portable heaters, weed burners, etc. Intermediate sizes are used in home delivery service, filling tanks, bottles, and cylinders. Sizes 1-1/2" and larger are used for unloading and transporting LPG between tank trucks, storage tanks and delivery trucks. Meets requirements of N.F.P.A. Code 58 and is UL listed. **Construction:** Smooth, permeation resistant, nitrile tube. Braid is synthetic cord reinforcement with neoprene cover. **Assemblies:** 1/2" hoses are coupled with male x male pipe thread plated steel fittings and the 1" hoses are coupled male x male. **Minimum Burst:** 1,750#, continuous indented brand on all hose.

Std. Length: As required. **Note:** Remains flexible in sub zero temperatures (-50° to 180°). Pro-Sur fittings are non-sparking, brass, one-piece fittings that are designed to virtually eliminate any possibility of gas leaking behind the hex nut.

WARNING: LP gas has volatile characteristics that require special hose construction. The rubber compounds must be designed to handle LP gas, and the cover must be pin-pricked to prevent gas buildup among the various layers of the hose. Using the wrong hose may lead to early/sudden failure. Do not use reusable couplings with this product.

TWIN LINE WELDING HOSE



ASSEMBLIES

Apache P/N	I.D. x Length	Wt. Ea.	Apache P/N	I.D. x Length	Wt. Ea.
10066840	3/16" x 12.5'	2.0#	10066865	1/4" x 12.5'	3.0#
10066850	3/16" x 25'	4.0#	10066875	1/4" x 25'	6.0#
10066855	3/16" x 50'	7.0#	10066880	1/4" x 50'	11.0#

Applications: Oxy-acetylene service in steel, metal working, industrial, construction and agricultural industries. **Construction:** Tube is specially compounded for oxy-acetylene service. Vertically braided rayon cord reinforcement. Smooth cover, red and green line bonded securely together for easy handling. Coupled with female x female, brass oxy-acetylene couplings. Meets RMA-IAA Spec. Grade R. Other lengths available upon request.

Male x male welding hose adapters are available by request.

NON-REINFORCED EVA TUBING



**NATURAL BULK HOSE
COILED**

				SHRINK WRAPPED COIL w/LABEL			BOXED COIL		
I.D. x Wall	Apache P/N	Length	Wt. 100'	Apache P/N	Length	Wt. 100'	Apache P/N	Length	Wt. 100'
1/4" x 1/8"	15015610	500'	4.0#						
3/8" x 1/8"	15016000	500'	5.6#	15018622	25'	2.1#	15018525	100'	8.5#
				15018632	50'	4.3#			
7/16" x 1/8"	15016507	500'	6.2#						
1/2" x 1/8"	15017007	500'	7.1#	15018624	25'	2.5#	15018530	100'	10.0#
				15018634	50'	5.0#			
5/8" x 1/8"	15017252	250'	7.8#				15018535	100'	12.0#
3/4" x 1/8"	15017503	250'	14.0#	15018626	25'	3.5#	15018534	100'	14.0#
				15018636	50'	7.0#			
1" x 1/8"	15018003	200'	24.0#	15018628	25'	6.0#	15018537	100'	24.0#
				15018638	50'	12.0#			
1" x 5/32"	15018050	100'	26.0#				15018536	100'	26.0#
1-1/4" x 1/4"							15018518	100'	29.0#

**BLACK BULK HOSE
REEL**

I.D. x Wall	Apache P/N	Length	Wt. 100'
3/8" x 1/8"	15016007	500'	5.6#

Applications: Used in agricultural, lawn and chemical transfer. Handles common herbicides and insecticide solutions, including Monsanto's Lasso®. Used for the application of anhydrous ammonia, aqua ammonia, phosphates and all liquid fertilizers. **Construction:** Ethyl vinyl acetate plastic tubing. **Temp. Range:** For natural EVA tubing -30°F to 140°F. **Features:** Good chemical/weather resistance. Black tubing has a higher ozone resistance than standard EVA tubing. **W.P.:** 120PSI applicable @ 75°F. **WARNING: Not for transfer of anhydrous ammonia under pressure. Recommended for open-end discharge only.**

REINFORCED EVA TUBING



**BULK HOSE
NATURAL - COIL**

Apache P/N	I.D. x O.D.	Temp. Range	Length	W.P. @ 68°F	Wt. 100'
15018559	1/4" x 0.385"	-50°F to 125°F	300'	250#	3.0#
15018560	3/8" x 0.593"	-50°F to 125°F	300'	250#	10.1#
15018570	1/2" x 0.720"	-50°F to 125°F	300'	250#	12.3#
15018572	5/8" x 0.87"	-50°F to 125°F	300'	200#	11.8#
15018574	3/4" x 1"	-50°F to 125°F	300'	150#	16.1#
15018576	1" x 1.312"	-50°F to 125°F	200'	150#	24.7#

UNIVERSAL BRAIDED (BLACK) - COIL

Apache P/N	I.D. x O.D.	Temp. Range	Length	W.P. @ 68°F	Wt. 100'
15018540	3/8" x 0.593"	-50°F to 125°F	5000'	250#	10.1#
15018543	1/2" x 0.720"	-50°F to 125°F	5000'	250#	12.3#
15018546	3/4" x 1"	-50°F to 125°F	5000'	150#	16.1#

Applications: Used in agricultural, lawn and chemical transfer. Handles common herbicides and insecticide solutions, including Monsanto's Lasso®. Used for the application of anhydrous ammonia, aqua ammonia, herbicides, phosphates and all liquid fertilizers. **Construction:** Ethyl vinyl acetate plastic tubing with polyester textile yarn reinforcement. **Features:** Good chemical and weather resistance. Solid black coloring of this tubing cover provides better UV and ozone resistance than the standard natural colored tubing. **WARNING: Not for transfer of anhydrous ammonia under pressure. Recommended for open-end discharge only.**

NON-REINFORCED CLEAR VINYL TUBING



**BULK HOSE
BOXED**

Apache P/N	I.D. x Wall	Length	W.P.	Wt. 100'	Apache P/N	I.D. x Wall	Length	W.P.	Wt. 100'
15003006	1/4" x 1/16"	100'	50#	3.2#	15007008	3/4" x 1/8"	100'	35#	18.0#
15004002	3/8" x 1/16"	100'	40#	4.5#	15007508	7/8" x 1/8"	100'	30#	22.0#
15004509	1/2" x 1/16"	100'	25#	5.8#	15008012	1" x 1/8"	100'	25#	24.0#
15005009	1/4" x 1/8"	100'	70#	7.7#	15008055	1-1/4" x 1/4"	50'	40#	32.5#
15005505	3/8" x 1/8"	100'	60#	10.3#	15008910	1-1/2" x 1/4"	50'	35#	38.1#
15006005	1/2" x 1/8"	100'	45#	12.9#	15009027	2" x 1/4"	50'	30#	46.5#
15006501	5/8" x 1/8"	100'	40#	15.5#					

Applications: Ideal for liquids and also used as sight gauge on storage tanks. **Construction:** Polyvinyl chloride. **Temp. Range:** For open end discharge 5°F to 149°F. **Features:** A clear, flexible, and lightweight tubing that provides full-flow viewing. **Benefits:** Good to excellent resistance to acids, fair to excellent resistance to alkalis, and excellent resistance to most solvents, except ketones, esters, and some aromatic hydrocarbons.

REINFORCED CLEAR VINYL TUBING



BULK HOSE COILS

Apache P/N	I.D. x O.D.	Length	W.P.	Wt. Ea.	Apache P/N	I.D. x O.D.	Length	W.P.	Wt. Ea.
15011505	1/4" x 0.438"	300'	250#	5.6#	15014504	1" x 1.312"	200'	125#	31.2#
15012501	3/8" x 0.594"	300'	225#	9.2#	15015004	1-1/4" x 1.656"	100'	100#	51.0#
15013001	1/2" x 0.750"	300'	200#	13.5#	15015500	1-1/2" x 1.937"	100'	100#	65.0#
15013508	5/8" x 0.875"	300'	200#	16.2#	15015608	2" x 2.50"	100'	75#	98.0#
15014008	3/4" x 1.025"	300'	150#	21.1#					



150# INDUSTRIAL GRADE - COILS

Apache P/N	I.D. x O.D.	Length	W.P.	Wt. Ea.	Apache P/N	I.D. x O.D.	Length	W.P.	Wt. Ea.
15005646	1/4" x 0.438"	300'	150#	21.0#	15005650	1/2" x 0.750"	300'	150#	39.0#
15005648	3/8" x 0.594"	300'	150#	30.0#	15010983	1/2" x 0.750"	25'	150#	3.4#
15010988	5/8" x 0.875"	25'	150#	3.8#	15010984	1/2" x 0.750"	50'	150#	6.8#
15010989	5/8" x 0.875"	50'	150#	7.6#	15010985	1/2" x 0.750"	100'	150#	13.5#
15010990	5/8" x 0.875"	100'	150#	15.2#					



SHRINK WRAPPED COIL w/LABEL

Apache P/N	I.D. x O.D.	Length	W.P.	Wt. Ea.	Apache P/N	I.D. x O.D.	Length	W.P.	Wt. Ea.
15010978	3/8" x 0.594"	25'	225#	2.2#	15011003	1" x 1.312"	25'	150#	7.6#
15010979	3/8" x 0.594"	50'	225#	4.4#	15011004	1" x 1.312"	50'	150#	15.1#
15010980	3/8" x 0.594"	100'	225#	8.8#	15011005	1" x 1.312"	100'	150#	30.2#
15010998	3/4" x 1.025"	25'	150#	5.4#					
15010999	3/4" x 1.025"	50'	150#	9.8#					
15011000	3/4" x 1.025"	100'	150#	19.7#					

Applications: Use when a clear hose needing reinforcement and higher working pressures is required. Good for applications such as air, water and pneumatic lines. **Construction:** Profile formulated to comply with FDA requirements. Clear polyvinyl chloride reinforced with synthetic cord. **Temp. Range:** -20°F to 150°F (higher temperatures = lower working pressures). **Recommended Couplings:** Standard shank fittings with ferrules or clamps, normally use on rubber hoses. **WARNING: Not for transfer of anhydrous ammonia.**

LINEAR LOW DENSITY POLYETHYLENE TUBING



Apache P/N	Tube O.D.	Tube I.D.	Wall	P.S.I. @ 75°F	Std. Length
15018882	1/4"	0.170"	0.040"	250#	100' Roll
15018883	1/4"	0.170"	0.040"	250#	500' Reel
15018884	1/4"	0.170"	0.040"	250#	1000' Reel
15018885	5/16"	0.187"	0.062"	170#	100' Roll
15018886	5/16"	0.187"	0.062"	170#	500' Reel
15018887	3/8"	1/4"	0.062"	170#	100' Roll
15018889	3/8"	1/4"	0.062"	170#	500' Reel
15018893	1/2"	3/8"	0.062"	170#	100' Roll
15018894	1/2"	3/8"	0.062"	170#	250' Reel

Applications: Has a superior environmental stress crack resistance that greatly exceeds ordinary polyethylene tubing as measured by ASTM D 1963/IGEPAL test. Environmental stresses that can shorten the service life of tubing include chemical exposure, aging, connections to barb type fittings, or high vibration connections with compression fittings. This tubing is compliant to NGS 51/FDS requirements for food contact applications. **Tube Tolerance:** +/-0.05mm. **Temp. Range:** -20°F to 150°F. **Benefits:** Dimensional stability, uniformity and long term strength, higher burst strength and greater tensile strength. **Colors:** Black, other colors available upon request.

INSTALLATION

Reusable Tubing and Fittings:

1. When cutting the tubing make sure the ends are cut squarely. The outer surface of the tube should be clean, smooth, and free of scratches.
2. Make sure tubing is fully inserted (even though it may feel blocked) all the way to tube stop.
3. To insure the tube and fitting are fully connected, pull on the tubing to verify that the tubing and fitting are locked.
4. Stainless steel teeth on collet prevent tube from separating from the O-ring and ensures a leak-free seal.

Separating Reusable Tubing and Fittings:

1. To remove the tube from the fitting, push the collet in and hold it, then pull the tubing out.

ACCESSORIES



TUBE CUTTER AND REPLACEMENT BLADES

Apache P/N	Item	Tube O.D.	Apache P/N	Item	Pack Qty.
44103218	Cutter	up to 1/2"	44103219	Blades	5 Pack

Features: Precision cutter makes quick, clean/square cuts on all plastic tubing materials up to 1/2" O.D.

PUSH-IN VALVES – PLASTIC



CONTROL VALVE UNION CONNECTOR – IN-LINE NEEDLE VALVE

Apache P/N	Tube O.D.	Tube O.D.	P.S.I.	Temp. Range
44103286	1/4"	1/4"	230	-20°F to +185°F
44103287	3/8"	3/8"	170	-20°F to +185°F

Features: Highly durable and resistant to pressure. Allows control of flow in both directions. The collar on adjustable valve stem locks the flow control. Sold 1 per bag.



HAND VALVE UNION CONNECTOR – IN-LINE SHUT OFF VALVE NSF CERTIFIED

Apache P/N	Tube O.D.	Tube O.D.	P.S.I.	Temp. Range
44103288	1/4"	1/4"	230	-20°F to +185°F
44103289	3/8"	3/8"	170	-20°F to +185°F
44103290	1/2"	1/2"	170	-20°F to +185°F

Features: For use with portable water. Allows for partial flow control. Plastic shut off valve body is fabricated from food grade white acetal copolymer. Seals are nitrile rubber (epdm also available). The collet is also food grade polypropylene with stainless steel teeth. Sold 1 per bag.

WARNING: Not for use with compressed air, petroleum spirits, fuels, explosive gases or heating systems.



CHECK VALVE – IN-LINE NSF CERTIFIED

Apache P/N	Tube O.D.	Tube O.D.	P.S.I.	Temp. Range
44103291	1/4"	1/4"	230	-20°F to +185°F
44103292	5/16"	5/16"	230	-20°F to +185°F
44103293	3/8"	3/8"	170	-20°F to +185°F
44103294	1/2"	1/2"	170	-20°F to +185°F

Features: Used to control fluid in one direction. The free flow of the check valve is from port 1 to 2, the check function is from 2 to 1. This valve prevents reverse flow. Sold 1 per bag. **Above data is for air with nylon tubing, for other fluids or materials contact Apache.**

PUSH-IN FITTINGS – PLASTIC MEETS NSF REQUIREMENTS



MALE CONNECTOR

Apache P/N	Tube O.D.	NPTM Thread	Apache P/N	Tube O.D.	NPTM Thread
44103220	1/4"	1/8"	44103224	3/8"	1/4"
44103206	1/4"	1/4"	44103207	3/8"	3/8"
44103221	1/4"	3/8"	44103225	3/8"	1/2"
44103222	5/16"	1/4"	44103226	1/2"	3/8"
44103223	5/16"	3/8"	44103227	1/2"	1/2"



ELBOW UNION

Apache P/N	Tube O.D.	Tube O.D.	Apache P/N	Tube O.D.	Tube O.D.
44103200	1/4"	1/4"	44103201	3/8"	3/8"
44103234	5/16"	1/4"	44103237	1/2"	3/8"
44103235	5/16"	5/16"	44103238	1/2"	1/2"
44103236	3/8"	1/4"			



MALE ELBOW

Apache P/N	Tube O.D.	NPTM Thread	Apache P/N	Tube O.D.	NPTM Thread
44103210	1/4"	1/8"	44103230	3/8"	1/4"
44103211	1/4"	1/4"	44103231	3/8"	3/8"
44103295	1/4"	3/8"	44103232	1/2"	3/8"
44103228	5/16"	1/4"	44103233	1/2"	1/2"
44103229	5/16"	3/8"			



TEE UNION

Apache P/N	Run O.D.	Stem O.D.	Apache P/N	Run O.D.	Stem O.D.
44103208	1/4"	1/4"	44103209	3/8"	3/8"
44103245	5/16"	5/16"	44103247	1/2"	3/8"
44103246	3/8"	1/4"	44103248	1/2"	1/2"

PUSH-IN FITTINGS – PLASTIC CONTINUED MEETS NSF REQUIREMENTS



STEM ADAPTER

Apache P/N	Stem O.D.	NPTM Thread	Apache P/N	Stem O.D.	NPTM Thread
44103204	1/4"	1/8"	44103215	3/8"	1/4"
44103212	1/4"	1/4"	44103205	3/8"	3/8"
44103213	5/16"	1/4"	44103216	1/2"	3/8"
44103214	5/16"	3/8"	44103217	1/2"	1/2"



TUBE ELBOW BARB CONNECTOR

Apache P/N	Stem O.D.	Tube I.D.	Apache P/N	Stem O.D.	Tube I.D.
44103249	1/4"	1/4"	44103252	5/16"	5/16"
44103250	1/4"	5/16"	44103253	3/8"	1/4"
44103251	5/16"	1/4"	44103254	3/8"	5/16"



TUBE BARB CONNECTOR

Apache P/N	Stem O.D.	Tube I.D.	Apache P/N	Stem O.D.	Tube I.D.
44103255	1/4"	1/4"	44103260	3/8"	1/4"
44103256	1/4"	5/16"	44103261	3/8"	3/8"
44103257	5/16"	1/4"	44103262	3/8"	1/2"
44103258	5/16"	5/16"	44103263	1/2"	3/8"
44103259	5/16"	3/8"	44103264	1/2"	1/2"



FEMALE ADAPTER

Apache P/N	Tube O.D.	NPTM Thread	Apache P/N	Tube O.D.	NPTM Thread
44103239	1/4"	1/8"	44103242	5/16"	1/4"
44103240	1/4"	1/4"	44103243	3/8"	1/8"
44103241	5/16"	1/8"	44103244	3/8"	1/4"



TWO WAY DIVIDER

Apache P/N	Tube In	Tube Out	Apache P/N	Tube In	Tube Out
44103276	1/4"	1/4"	44103279	3/8"	3/8"
44103277	5/16"	5/16"	44103281	1/2"	1/2"



CROSS

Apache P/N	Tube O.D.	Apache P/N	Tube O.D.
44103272	1/4"	44103274	3/8"
44103273	5/16"	44103275	1/2"



UNION CONNECTOR

Apache P/N	Tube O.D.	Tube O.D.	Apache P/N	Tube O.D.	Tube O.D.
44103202	1/4"	1/4"	44103268	3/8"	5/16"
44103265	5/16"	1/4"	44103203	3/8"	3/8"
44103266	5/16"	5/16"	44103270	1/2"	3/8"
44103267	3/8"	1/4"	44103271	1/2"	1/2"



TUBE END STOP

Apache P/N	Tube O.D.	Apache P/N	Tube O.D.
44103282	1/4"	44103284	3/8"
44103283	5/16"	44103285	1/2"

Specifications listed below apply to all push-in plastic fittings listed above.

Temp. Range: -20°F to +185°F. **P.S.I.:** Both the 1/4" and 5/16" are rated at 230 P.S.I., the 3/8" and 1/2" are rated at 170 P.S.I.

Features: Suitable for inert gases, liquids and vacuum with metal or plastic tube. For fast connection and disconnection without tools. A wide range of sizes and configurations for use and reuse. Collet cover prevents accidental removal of tube and allows color coding.

WARNING: Not recommended for use in heating systems or with explosive gases, petroleum spirits, or other fuels. Contact Apache for chemical (or potentially aggressive liquid) resistance information.

PVC AIR TANK / WHIP HOSE



ASSEMBLIES

Apache P/N	I.D. x Length	Hose Color	Cpld.	W.P.	Wt. Ea.
98108747	1/4" x 4'	Blue	1/4" Male x Male	300#	0.4#
98108750	1/4" x 6'	Blue	1/4" Male x Male	300#	0.6#
98108755	1/4" x 15'	Red	1/4" Male x Male	300#	0.6#
98108753	1/4" x 4'	Blue	1/4" Male x BTC	300#	0.8#

Applications: Use on air tanks, workbenches and workstations where a short hose is needed. **Assemblies:** Coupled male x male or male x BTC (brass tire chuck).

300# PREMIUM PVC AIR HOSE



ASSEMBLIES

Apache P/N	I.D. x Length	Hose Color	W.P.	Wt. Ea.
98108760	1/4" x 25'	Blue	300#	2.3#
98108765	1/4" x 50'	Blue	300#	4.3#
98108775	3/8" x 25'	Red	300#	3.3#
98108780	3/8" x 50'	Red	300#	6.1#
98108781	3/8" x 100'	Red	300#	9.8#
98108792	1/2" x 50'	Orange	300#	7.1#

Applications: For use with air compressors, staplers, nailers and pneumatic tools. **Construction:** Premium PVC air hose assemblies feature oil and abrasion resistant tube and cover, flexible/kink proof construction and excellent temperature range. **Assemblies:** Coupled 1/4" brass male pipe thread. 1/2" hose coupled 3/8" brass male pipe thread. Hose includes PVC bend restrictors. **Packaged:** Shrink wrapped coil with color point of purchase for convenient retail sale.

INDUSTRIAL PVC AIR HOSE (YELLOW)



ASSEMBLIES

Apache P/N	I.D. x Length	W.P.	Wt. Ea.
10130330	3/8" x 50'	300#	5.5#
98108843	3/8" x 100'	300#	11.0#

Applications: For use with air compressors, staplers, nailers and pneumatic tools. **Assemblies:** Coupled 1/4" brass male pipe thread on each end. **Features:** Oil and abrasion resistant tube/cover, flexible/kink proof construction, excellent temperature range and a high visibility "safety yellow" cover.

XTREME FLEX AIR HOSE



ASSEMBLIES

Apache P/N	I.D. x Length	W.P.	Wt. Ea.
10130348	3/8" x 25'	300#	3.2#
10130350	3/8" x 50'	300#	4.8#

Construction: Specially formulated thermoplastic compounds provide extreme flexibility in severe cold temperatures. Highly abrasion resistant, non-marking cover. Stronger wall and tighter fabric reinforcement improve hose kink resistance and working/burst pressures without sacrificing flexibility. 1/4" MPT fittings (includes molded bend restrictors). **Features:** Hose features the light weight of PVC and durability of rubber without cold temperature stiffness for easy handling. **Temp. Range:** -40°F to 150°F.

300# EPDM AIR HOSE - PREMIUM RUBBER (RED)



ASSEMBLIES

Apache P/N	I.D. x Length	W.P.	Wt. Ea.
98108938	1/4" x 25'	300#	4.4#
98108940	1/4" x 50'	300#	8.2#
98108942	3/8" x 25'	300#	5.2#
98108943	3/8" x 50'	300#	10.0#
98108944	3/8" x 100'	300#	19.8#
98108952	1/2" x 25'	300#	5.0#
98108953	1/2" x 50'	300#	10.0#

Applications: For use with air compressors, staplers, nailers and pneumatic tools. **Assemblies:** 1/4" and 3/8" I.D. assemblies are coupled with a 1/4" brass male pipe thread on each end. 1/2" I.D. hose is coupled with 3/8" brass male pipe thread. Hoses include bend restrictors on each end to prolong service life. **Features:** Excellent temperature range. Heat, ozone and abrasion resistant, stays flexible at low temps.

Packaged: Shrink wrapped coil with color point of purchase for convenient retail sale.

AIR HOSE REELS



AUTO REWIND POLYPROPYLENE REEL

Apache P/N	Hose	Reel	I.D. x Length	Use	Hose W.P.	Wt. Ea.
99023441	Polyurethane	Poly	3/8" x 50'	Home/Garage	300#	16.00#

Features: Maintenance free auto rewind mechanism. Positive lock stops hose at desired working length, automatic rewind activates with a tug. Reel can be locked to bracket or easily removed for safe storage. Powder coated steel bracket allows reel to swivel 180°. Can be wall or ceiling mounted. 3/8" x 50' (300#) reinforced polyurethane hose coupled with 1/4" mpt with bend restrictor and adjustable hose stop. Includes 36" reel connection hose and roll of PTFE thread tape. Hose is non-marking, abrasion, kink, oil, and UV/weather resistant. Polypropylene case is corrosion resistant.



AUTO REWIND STEEL REEL

Apache P/N	Hose	Reel	I.D. x Length	Use	Hose W.P.	Wt. Ea.
99023966	PVC	Poly & Steel	3/8" x 50'	Home/Garage	300#	17.50#
99023961	Rubber	Steel	3/8" x 50'	Shop/Ind.	300#	38.25#
99023964	Rubber	Steel	3/8" x 65'	Shop/Ind.	300#	45.00#

Features: Reel is constructed from heavy-duty steel and has an auto-rewind mechanism that automatically locks hose at desired length. Reel includes a 1/4" female pipe thread inlet connection, one stationary mounting bracket with a hose guide arm, and a (300#) 3/8" x 50' air hose coupled with 1/4" male pipe thread with a hose stop and bend restrictor, included 36" reel connection hose and roll of PTFE thread tape.



HAND CRANK STEEL REEL

Apache P/N	Hose	Reel	I.D. x Length	Use	Hose W.P.	Wt. Ea.
99023955	Rubber	Steel	3/8" x 50'	Garage/Shop	300#	17.60#
99023957	Rubber	Steel	3/8" x 100'	Garage/Shop	300#	28.00#

Features: Reel is constructed from heavy-duty steel and has a spring tension brake for smooth operation. Reel includes a 1/4" female pipe thread reel inlet, one stationary mounting bracket, a bolt on hand crank, and a (300#) 3/8" x 50'/100' rubber air hose: coupled with 1/4" male pipe thread. Includes 36" reel connection hose and roll of PTFE tape.

AIR HOSE COUPLERS, PLUGS & ACCESSORIES

Industrial and automotive quick-connect fittings for air service applications up to 300 P.S.I.

- Couplers** **Filters** **Gauges**
- Plugs** **Regulators** **Lubricators**
- Adapters** **Safety Blow Gun** **Manifold**

Contact customer service 1-800-553-5455 for specifications and pricing.



CONTRACTORS INDUSTRIAL WATER / GARDEN HOSE



ASSEMBLIES



Apache P/N	I.D. x Length	Wt. Ea.	Apache P/N	I.D. x Length	Wt. Ea.
98108797	5/8" x 25'	6.6#	98108802	3/4" x 25'	9.2#
98108798	5/8" x 50'	12.8#	98108804	3/4" x 50'	18.1#
98108799	5/8" x 75'	14.1#	98108806	3/4" x 75'	27.0#
98108800	5/8" x 100'	25.3#	98108809	3/4" x 100'	35.8#

Applications: 100% rubber, heavy-duty MGHT x FGHT solid brass couplings and one bend restrictor. **Benefits:** Resists sunlight, abrasion, kinking and cracking; flexible in freezing temperatures. Bend restrictor promotes longer life. **Temp. Range:** -40°F to 200°F (-40°C to 90°C).

Note: Hoses used to transport hot water MUST NOT be used to transport pressurized steam. General and multi-purpose hoses are NOT intended to transport water for human consumption. *Assemblies in other lengths available upon request.*

GARDEN HOSE ACCESSORIES

Variety of accessories and replacement parts for garden hoses.

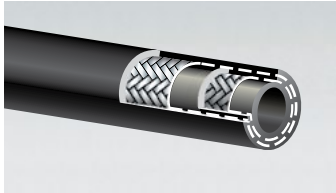
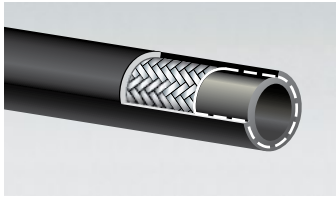
Vinyl Gaskets Quick Disconnect Hose Adapters

Nozzles Fog Nozzles

Contact customer service 1-800-553-5455 for specifications and pricing.



UNIVERSAL HYDRAULIC HOSE



**BULK HOSE
SAE 100R1AT**

Apache P/N	I.D. x O.D.	Burst	M.B.R.	W.P.	Wt. Ft.
39000683	1/4" x 0.53"	11000#	3.94"	2750#	0.15#
39000692	3/8" x 0.69"	11000#	5.12"	2250#	0.21#
39000687	1/2" x 0.81"	8000#	7.09"	2000#	0.27#
39000694	3/4" x 1.09"	5000#	9.45"	1250#	0.38#
39000697	1" x 1.14"	4000#	12.00"	1000#	0.61#

SAE 100R2AT

Apache P/N	I.D. x O.D.	Burst	M.B.R.	W.P.	Wt. 100'
39000654	1/4" x 0.60"	20000#	3.94"	5000#	0.24#
39000658	3/8" x 0.75"	16000#	5.12"	4000#	0.32#
39000660	1/2" x 0.87"	14000#	7.09"	3500#	0.40#
39000664	3/4" x 1.16"	9000#	9.45"	2250#	0.57#
39000666	1" x 1.15"	8000#	12.00"	2000#	0.90#

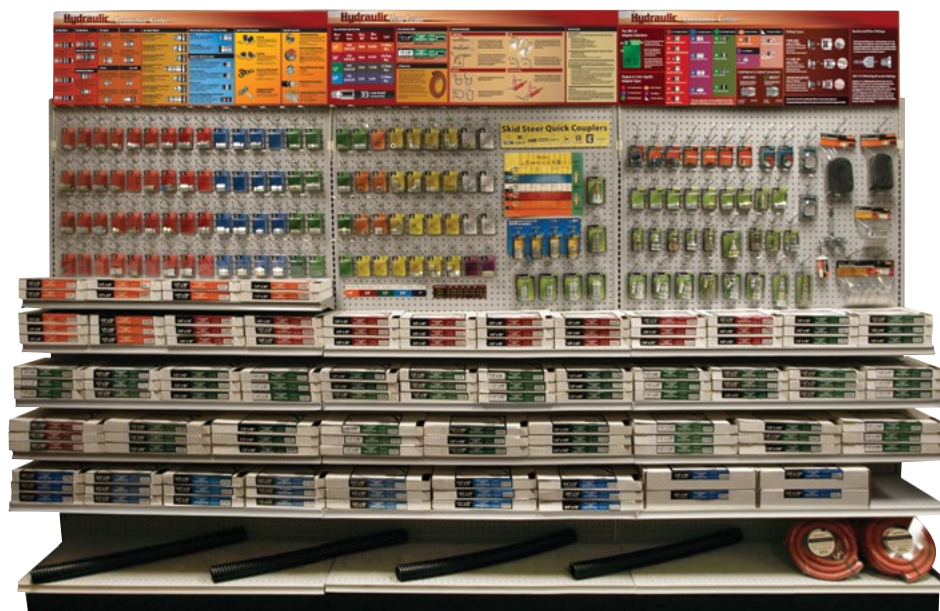
**ASSEMBLIES 2 WIRE
3/8" I.D.**

Apache P/N	Description	Wt. Ea.
98398220	3/8" I.D. x 12"	0.64#
98398221	3/8" I.D. x 15"	0.70#
98398223	3/8" I.D. x 18"	0.76#
98398226	3/8" I.D. x 24"	0.92#
98398229	3/8" I.D. x 30"	1.02#
98398232	3/8" I.D. x 36"	1.20#
98398235	3/8" I.D. x 42"	1.38#
98398238	3/8" I.D. x 48"	1.54#
98398241	3/8" I.D. x 60"	1.78#
98398244	3/8" I.D. x 72"	2.08#
98398247	3/8" I.D. x 84"	2.34#
98398250	3/8" I.D. x 96"	2.68#
98398253	3/8" I.D. x 108"	3.02#
98398256	3/8" I.D. x 120"	3.18#
98398259	3/8" I.D. x 132"	3.54#
98398262	3/8" I.D. x 144"	3.70#

1/2" I.D.

Apache P/N	Description	Wt. Ea.
98398300	1/2" I.D. x 12"	0.86#
98398305	1/2" I.D. x 15"	1.02#
98398303	1/2" I.D. x 18"	1.02#
98398306	1/2" I.D. x 24"	1.20#
98398309	1/2" I.D. x 30"	1.40#
98398312	1/2" I.D. x 36"	1.54#
98398315	1/2" I.D. x 42"	1.84#
98398318	1/2" I.D. x 48"	1.96#
98398321	1/2" I.D. x 60"	2.38#
98398324	1/2" I.D. x 72"	2.76#
98398327	1/2" I.D. x 84"	3.10#
98398330	1/2" I.D. x 96"	3.56#
98398333	1/2" I.D. x 108"	3.76#
98398336	1/2" I.D. x 120"	4.41#
98398339	1/2" I.D. x 132"	4.62#
98398342	1/2" I.D. x 144"	4.98#
98398345	1/2" I.D. x 156"	5.50#
98398351	1/2" I.D. x 168"	5.78#
98398354	1/2" I.D. x 180"	6.22#
98398357	1/2" I.D. x 192"	6.54#

Assemblies: Hose and couplings meet 100R2AT specifications. **3/8" I.D.:** 4000 P.S.I. (W.P.), 16,000 P.S.I. burst, 5.12" minimum bend radius, coupled 3/8" male pipe thread on each end. **1/2" I.D.:** 3500 P.S.I. (W.P.), 14,000 P.S.I. burst, 7.09" minimum bend radius, coupled 1/2" male pipe thread on each end. **Temp. Range:** -40°F to 212°F (-40°C to 100°C). **Packaged:** Coiled, sleeved, and labeled with I.D., length, specifications, and UPC bar code. **Contact Apache for additional sizes and lengths.**



**Retail Displays Available
Call 1-800-459-8423**



GATES HYDRAULIC HOSE

BULK HOSE
SAE 100R1AT (G1)

Apache P/N	I.D. x O.D.	Burst	M.B.R.	W.P.	Wt. Ft.
38000680	1/4" x 0.53"	13100#	4.0"	3275#	0.16#
38000700	3/8" x 0.69"	10400#	5.0"	2600#	0.23#
38000710	1/2" x 0.82"	9300#	7.0"	2325#	0.29#
38000730	3/4" x 1.10"	6100#	9.5"	1525#	0.42#
38000740	1" x 1.41"	5100#	12.0"	1275#	0.62#

Applications: Medium pressure hydraulic oil lines. Meets/exceeds SAE 100R1AT requirements. **Construction:** Tube is black, oil resistant, synthetic rubber (nitrile). Cover is black, oil, and abrasion resistant synthetic rubber (modified nitrile). No skiving required with "Type T," reusable or Power Crimp® couplings. **Reinforced:** One braid of high tensile steel wire. **Recommended Couplings:** MegaCrimp®, reusable "Type T," permanent PC stems & ferrules. **Temp. Range:** -40°F to 212°F (-40°C to 100°C).

SAE 100R2AT (G2)

Apache P/N	I.D. x O.D.	Burst	M.B.R.	W.P.	Wt. Ft.
38000420	1/4" x 0.58"	23200#	4.0"	5800#	0.27#
38000430	3/8" x 0.73"	19200#	5.0"	4800#	0.37#
38000440	1/2" x 0.86"	16000#	7.0"	4000#	0.44#
38000460	3/4" x 1.14"	12400#	9.5"	3100#	0.63#
38000470	1" x 1.48"	9600#	12.0"	2400#	0.96#
38000480	1-1/4" x 1.87"	7300#	16.5"	1825#	1.50#

Applications: High pressure hydraulic oil lines. Meets/exceeds SAE 100R2AT requirements. **Construction:** Black, oil resistant synthetic rubber (nitrile) tube. Cover is black, oil, and abrasion resistant thin synthetic rubber. No skiving required with MegaCrimp®, "Type T," or Power Crimp® couplings. **Reinforced:** Two braids of high tensile steel wire. **Recommended Couplings:** MegaCrimp®, reusable "Type T," and permanent PC stems/ferrules. **Temp. Range:** -40°F to 212°F (-40°C to 100°C).

EXTRA FLEXIBLE 100R17 (M3K)

Apache P/N	I.D. x O.D.	Burst	M.B.R.	W.P.	Wt. Ft.
38000648	1/4" x 0.47"	12000#	2.0"	3000#	0.12#
38000650	3/8" x 0.62"	12000#	2.5"	3000#	0.20#
38000652	1/2" x 0.78"	12000#	3.5"	3000#	0.30#
38000654	5/8" x 0.98"	12000#	4.0"	3000#	0.54#
38000656	3/4" x 1.14"	12000#	4.8"	3000#	0.66#
38000658	1" x 1.48"	12000#	6.0"	3000#	1.04#

Applications: High pressure hydraulic oil lines. Meets SAE 100R17 requirements. MK3 hose has smaller exterior dimensions and significantly tighter bend radii than other SAE 100R1/100R2 hoses. **Construction:** Tube is black, oil resistant synthetic rubber (-4 through -16, nitrile). Cover is black, oil, abrasion, and weather resistant synthetic rubber (-4 to -16, modified nitrile). **Reinforced:** Braided high tensile steel wire. **Sizes:** -4, -6, and -8 are one-braid. **Sizes:** -10, -12, and -16 are two-braid. **Recommended Couplings:** MegaCrimp®, permanent PC stems/ferrules, and 16M3K also uses PCS stems/ferrules. **Temp. Range:** -40°F to 212°F (-40°C to 100°C).

SAE 100R4 (GMV)

Apache P/N	I.D. x O.D.	Burst	M.B.R.	W.P.	Wt. Ft.
38001536	3/4" x 1.22"	1400#	2.5"	350#	0.45#
38001537	1" x 1.45"	1200#	3.0"	300#	0.54#
38001539	1-1/4" x 1.76"	1000#	4.0"	250#	0.77#
38001541	1-1/2" x 2.01"	650#	5.0"	162#	0.91#
38001543	2" x 2.51"	450#	6.0"	112#	1.16#
38001545	2-1/2" x 3.02"	275#	7.0"	68#	1.39#
38001547	3" x 3.51"	250#	9.0"	62#	1.63#
38001549	3-1/2" x 4.01"	225#	10.0"	56#	1.80#

Applications: Petroleum and water based hydraulic fluids in suction lines or in low pressure return lines. Meets/exceeds SAE 100R4 requirements. Uses half the bend radius of SAE 100R4. **Construction:** Black, synthetic nitrile rubber tube specifically designed for resistance to high temperatures. **Reinforced:** Double spiral with helical spiral wire to prevent collapse. **Temp. Range:** -40°F to 275°F (-40°C to 135°C) constant, 300°F (149°C) intermittent (up to 10% of operating time).



POWER CRIMP® 707

The Gates Power Crimp 707 is the most precise, yet simplest crimper made. It was the first crimper with an electronic digital readout to indicate the gauge setting. It takes just a few seconds to make factory-quality hose assemblies with the push of a button. Crimp hydraulic hose from low pressure return lines to ultra high pressure, from 3/16" to 1 1/4" I.D. Crimps straight and bent tube stems, plus 45° and 90° block types.

SPECIFICATIONS

Production Rate: 100 assemblies per hour (using 1/2" I.D. 2-wire straight thread assemblies).

Dimensions: 13" wide by 12" deep by 26 1/2" high.

Weight: 188 lbs.

Power Source: (115 volt, 30 amp circuit. 1 h.p., 60 cycles) or (230 volt, 15 amp circuit. 1 h.p., 60 cycles)
Power source and dies ordered separately.

CONTACT CUSTOMER SERVICE FOR PRICING AND POWER SOURCE DIE INFORMATION.

MOBILE CRIMP® 4-20

The latest in high-tech crimping. Portable (mobile) crimper is light, versatile, and powerful enough to crimp up to 1-1/4" I.D. 4-spiral hose.

FEATURES

Digital accuracy for precise, consistent crimping.

Crimps low pressure return line to high pressure 4-spiral 1/4" I.D. (-4) through 1-1/4" I.D. (-20) hose right on the job site.

Bottom loading feature provides clear view of crimping area.

Unique die design holds coupling in crimping position to free hands.

Light comes on and a buzzer sounds when crimp is complete.

Portable (57 lbs.) or can be mounted permanently on service vehicle or work bench.

SPECIFICATIONS

Dimensions: 12-1/4" wide by 6-1/4" deep by 17-3/4" high.

Weight: 57 lbs.

Power Source: 12 volt DC (1/4 h.p.), 115 volt AC (1/4 h.p.), 115 volt (1/2 h.p.), 115 volt (1 1/2 h.p.)
(power source and dies ordered separately).

CONTACT CUSTOMER SERVICE FOR PRICING AND POWER SOURCE DIE INFORMATION.

ADDITIONAL HYDRAULIC PRODUCTS / SERVICES

Hose • Extremely High to Low Pressure • Thermoplastic • Teflon® • Refrigerant • Hot Oil • Couplings • Permanent • Reusable • Specialty • O-ring Flange • Metric • Adapters • Accessories • Gauges • Protective Sleeves • Spring Guards • Bend Restrictors • Hose Cut Off Blades • Crimpers

CALL APACHE CUSTOMER SERVICE WITH THE BRAND / MODEL# OF YOUR EQUIPMENT FOR A GATES QUICK-PIK™ AND AIM™ HYDRAULIC RECOMMENDATION. 1-800-332-3243



HYDRAULIC QUICK DISCONNECTS



S20 – GENERAL PURPOSE AGRICULTURAL O.E.M. COUPLINGS

Apache P/N	Description	Body	Max P.S.I.	Coupler
39040900	1/4" Female Pipe	1/4"	3000#	Complete
39040910	3/8" Female Pipe	3/8"	3000#	Complete
39040920	1/2" Female Pipe	1/2"	3000#	Complete

Applications: General purpose, double shut-off, fluid transfer quick couplings primarily used on agricultural equipment. Original equipment on snow plows, garden tractors, full size tractors, front-end loaders, skid-steer loaders, earth moving, and mining equipment. **Construction:** One-way sleeve design allows implement break-away when the coupling is clamped or bulkhead mounted. Available with either a rugged ball valve or a high flow poppet valve. All poppet valve models are 100% leak tested before leaving the factory. Critical parts are hardened for long service life.

Note: Interchangeable half-for-half with the Parker/Pioneer 4000 Series.

Other sizes and thread configurations available. Heavy-duty dust plugs and dust caps available.



S40 – ONE-HAND OPERATION AGRICULTURAL O.E.M. COUPLINGS

Apache P/N	Description	Body	Max P.S.I.	Coupler
39041200	1/4" Female Pipe	1/4"	3000#	Complete
39041210	3/8" Female Pipe	3/8"	3000#	Complete
39041235	1/2" Female Pipe	1/2"	3000#	Complete

Applications: General purpose, double shut-off, fluid transfer quick couplings. For use on equipment with a wide variety of agricultural and mobile equipment. **Construction:** Two-way sleeve design allows one-hand hook-up and break-away when clamped or bulkhead mounted. Double shut-off design available with either a rugged ball valve or leak-free, high flow poppet valve. All poppet valve models are 100% leak tested before leaving the factory. Critical parts are hardened for long service life. **Note:** Interchangeable half-for-half with the Parker/Pioneer 4200 Series.

Other sizes and thread configurations available. Heavy-duty dust plugs and dust caps available.



S70 – CONNECT-UNDER-PRESSURE AGRICULTURAL O.E.M. COUPLINGS

Apache P/N	Description	Body	Max P.S.I.	Coupler
39041400	1/2" Female Pipe	1/2"	3000#	Complete
39041425	7/8"-14 Female O-Ring Boss	1/2"	3000#	Complete

Applications: For use on full size tractors and front-end loaders. Use when connection and disconnection under pressure, without the use of tools, is desirable. **Construction:** Two-way sleeve design allows one-hand hook-up and break-away when clamped or bulkhead mounted under pressure. Coupling half can be mated to either a ball valve or poppet valve ISO male tip. All poppet valve models are 100% leak tested before leaving the factory. Critical parts are hardened for long service life. **Note:** Interchangeable half-for-half with the Parker/Pioneer 8200 Series.

Other sizes and thread configurations available.



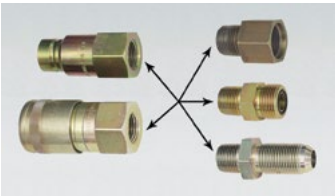
FFE49 – FLUSH FACE NON-SPILL HIGH-FLOW COUPLINGS

Apache P/N	Description	ISO Body	Body	Max P.S.I.	Coupler
39040676	1/2" Female NPT	1/2"	3/4"	4000#	Female body half
39040696	1/2" Female NPT	1/2"	3/4"	4000#	Male tip half
39040680	1-1/16"-12 Female ORB	1/2"	3/4"	4000#	Female body half
39040700	1-1/16"-12 Female ORB	1/2"	3/4"	4000#	Male tip half

Applications: For use on skid-steer loaders, power utility equipment, construction equipment, agricultural equipment, and hydraulic hand tools.

Construction: Smooth, one hand, push-to-connect locking mechanism. Minimum air inclusion during connection and minimum fluid spillage during disconnection. Non-spill, push-to-connect, fluid transfer quick coupling. Couplings are 100% leak tested before leaving the factory.

Note: Interchangeable with quick couplings meeting International Standard ISO 16028 dimensional requirements.



FFE49 – FLUSH FACE NON-SPILL HIGH-FLOW COUPLINGS

Apache P/N	Description
39038972	Female O-Ring Boss (5/8" tube O.D. 7/8-14 thread) x 1/2" Male Pipe Thread
39036468	Male Face Seal (5/8" tube O.D. 1-14 thread) x 1/2" Male Pipe Thread FF2404-10-08
39038452	Male JIC 37° Bulkhead (5/8" tube O.D. 7/8-14) x 1/2" Male Pipe Thread 2706-10-08

Note: Combine this adapter with either the FFE491-4 or FFE495-4 to replace the following fittings: Pioneer: FEM-501-10FO Nipple/Tip or Pioneer: FEM-502-10FO-NL Coupler.

Note: Combine this adapter with either the FFE491-4 or FFE495-4 to replace the following fittings: Pioneer: FEM-501-10BMS Nipple/Tip or Pioneer: FEM-502-10BMS-NL Coupler.

Note: Combine this adapter with either the FFE491-4 or FFE495-4 to replace the following fittings: Pioneer: FEM-501-10BMF Nipple/Tip or Pioneer: FEM-502-10BMF-NL Coupler.



FLUSH FACE COUPLER ADAPTERS

Apache P/N	Description	Adapts to male tip	Adapts to female body
39040720	Pioneer EAS-500	SafeWay FFE491-4 or other 1/2" ISO 16028	SafeWay S20, S40, S56, S70 Series or other 1/2" 1/2" ISO 5675
39040722	Pioneer SAE-500	SafeWay S71 and S561 Series or other 1/2" ISO 5675	SafeWay FFE495-4 or other 1/2" ISO 16028

HYDRAULIC ADAPTERS

**AGRICULTURAL COUPLER ADAPTERS**

Apache P/N	Replaces	Adapts to male tip	Adapts to female body
39041600	Pioneer 4060-4	SafeWay S71 Series or other ISO 5675	John Deer (old style)
39041605	Pioneer 4070-4	SafeWay S71 Series or other ISO 5675	International Harvester (old style)
39041610	Pioneer 4065-4	John Deere Cone (old style)	SafeWay S20, S40 or S70 Series or other ISO 5675
39041615	Pioneer 4065-4L	John Deere Cone (old style)	New Style John Deere ISO Casting or other ISO 5675
39041620	Pioneer 4067-4	John Deere Cone (old style)	International Harvester (old style)
39041625	Pioneer 4076-4	International Harvester (old style)	John Deere Cone (old style)
39041630	Pioneer 4080-4	SafeWay S71 Series or other ISO 5675	J.I. Case (old style)
39041635	Pioneer 4075-4 (old style)	International Harvester or other ISO 5675	New style John Deere ISO Casting
39041640	Pioneer 4075-4L (old style)	International Harvester or other ISO 5675	New Style John Deere ISO Casting
39041645	Pioneer 4085-4	J.L. Case (old style) or other ISO 5675	SafeWay's S20, S40 or S70 Series
39041650	Pioneer 4068-4	John Deere Cone (old style)	J.I. Case (old style)
39041655	N/A	J.I. Case (old style)	John Deere Cone (old style)

**AGRICULTURAL OEM COUPLERS & TIPS (PREVIOUS DESIGNS)**

Apache P/N	Description	Thread	Replacement Female Coupler
39041500	Female body half-ball check (mates with S11-4 Male Tip)	1/2" Pipe	Old Style "Cone" John Deere Interchange
39041505	Female body half-ball check (mates with S11-5 Male Tip)	3/4"-16 ORB	Old Style "Cone" John Deere Interchange
39041520	Female body half-poppet check (mates with S12-4 Male Tip)	1/2" Pipe	Old Style International Harvester

Double breakaway clamps for OEM replacement couplers also available.

**S11 - OLD STYLE "CONE" JOHN DEERE TIP**

Apache P/N	Description	Thread
39041510	Male Tip - Ball Check	1/2" Pipe
39041515	Male Tip - Ball Check	3/4"-16 O-Ring Boss

**S12 - OLD STYLE INTERNATIONAL HARVESTER TIP**

Apache P/N	Description	Thread
39041530	Male Tip - Ball Check	1/2" Pipe
39041535	Male Tip - Ball Check	7/8"-14 O-Ring Boss

**S13 - OLD STYLE J.I. CASE TIP**

Apache P/N	Description	Thread
39041540	Male Tip - Ball Check	1/2" Pipe

Contact Apache (1-800-332-3243) for Skid Steer Brand/Model Coupler information.

HYDRAULIC ACCESSORIES



1/2" BODY DUST PLUG & CAP

Apache P/N	Description	Qty.	M.F.G.#	Wt. Ea.
39041825	Dust Cap with chain	2 ea.	S49-4	0.08#
39041850	Dust Plug with chain	2 ea.	S44-4	0.08#
39041827	Molded Dust Cap	2 ea.	-	0.10#
39041852	Molded Dust Plug	2 ea.	-	0.10#



1/2" BODY REPLACEMENT SEAL / O-RING KIT

Apache P/N	Description	Qty.	M.F.G.#	Wt. Ea.
39041750	QD O-ring Kit	5 ea.	S460-4-5	0.05#



1/2" BODY HEAVY-DUTY DOUBLE BREAK-AWAY CLAMP

Apache P/N	Description	M.F.G.#	Wt. Ea.
39041870	Holds two 1/2" Body Couplers	S42-4-4	0.08#

Bulkhead rings available. Break-away available for 3/8" body agricultural couplers.



FILTER SERVICE INDICATOR GAUGE

Apache P/N	Description	Wt. Ea.
99019340	2" 0-15 P.S.I. Filter Service Indicator Gauge (1/8" Back-center mount)	0.2#
99019342	2" 0-25 P.S.I. Filter Service Indicator Gauge (1/8" Back-center mount)	0.2#

Features: Low pressure return line oil indicating gauges for 15 & 25 P.S.I. filter applications, shows when system needs service. Fits return line filter head castings with a 1/8" FNPT gauge port. **Note:** Green: system operating normally, Yellow: system will need serviced soon, Red: filter and fluid need serviced or replaced.



NYLON PROTECTIVE SLEEVE

Apache P/N	Description	Length	Wt. Ea.
39020504	0.90" I.D.	15' pkg	0.50#
39020506	1.00" I.D.	15' pkg	0.53#
39020508	1.14" I.D.	15' pkg	0.55#
39020510	1.25" I.D.	15' pkg	0.58#
39020522	1.85" I.D.	15' pkg	0.88#

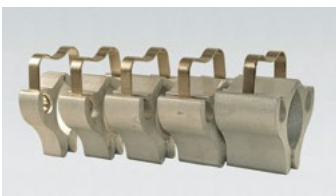
Applications: Sleeve extends hose life in high abrasion and heat applications and safely deflects high pressure oil spray in the event of a hose leak. Protects hose, cables, wiring and chain from damage to both the sleeve contents and contact surfaces. Easy to install, held in place with nylon cables ties or worm gear clamps. **Construction:** Tightly woven continuous filament Nylon Sleeve is resistant to abrasion, cuts, UV / Ozone and heat. MSHA accept, meets ISO 6945 Abrasion Standards, and passes FMVSS 302 Horizontal flame test. **Temp.:** Withstands ambient temperatures up to 250°F.



BREATHER VENT PLUG

Apache P/N	Description	Wt. Ea.
99019237	3/8" MNPT Hydraulic Breather Vent-Plug	0.06#
99019240	1/2" MNPT Hydraulic Breather Vent-Plug	0.10#

Applications: For use as vacuum relief or pressure equalization on gear boxes, oil tanks and reservoirs. Converts double action cylinders to single action and prevents dirt and foreign particles from entering ports open to the atmosphere. 40 Micron filter element in brass body with head and MPNT thread. Permanent element can easily be cleaned by removing vent and rinsing with a degreaser or solvent that removes grease and oily deposits.



CYLINDER CONTROL BLOCKS

Apache P/N	Description	Wt. Ea.
39040850	Farm Kit A: 1/4", 3/8", 1/2", 3/4" & 1" for 1" to 1-1/2" Rods	1.0#
39040851	Farm Kit B: 1/4", 3/8", 1/2", 3/4" & 1" for 1-1/2" to 2" Rods	1.0#
39040852	Kit B: 3/4", 1-1/4", 1-1/4" & 2" for 1-1/2" to 2" Rods	2.0#

Features: Narrow width, extra tough, high grade aluminum, alloy-heat treated for long, tough, durable use. Easy to install and remove, simply snap over cylinder rod and pull off when no longer needed. **Note:** When possible, place the thinner blocks between the thicker ones. (Blocks are also available in individual sizes.)



**GAUGES 2-1/2" FACE
GLYCERINE FILLED 1/4" MNPT LOWER MOUNT**

Apache P/N	Face	Wt. Ea.
99019288	0-3000 P.S.I.	0.45#
99019290	0-5000 P.S.I.	0.45#

CAM & GROOVE COUPLINGS



PART "A" MALE COUPLERS

I.D.	Aluminum	Wt. Ea.	Stainless Steel	Wt. Ea.
1-1/2"	50400000	0.28#	50400505	0.80#
2"	50400010	0.38#	50400506	1.12#
2-1/2"	50400015	0.58#	50027012	1.76#
3"	50400020	0.70#	50400508	2.16#
4"	50400030	1.34#	50400510	3.74#
6"	50400035	2.00#	50027009	8.55#

PART "E" MALE ADAPTERS

I.D.	Aluminum	Wt. Ea.	Stainless Steel	Wt. Ea.
1-1/2"	50400160	0.38#	50400585	0.95#
2"	50400170	0.60#	50400586	1.96#
2-1/2"	50400175	0.86#	50121514	2.44#
3"	50400180	1.32#	50400588	3.90#
4"	50400190	2.10#	50400590	6.38#
6"	50400195	6.16#	50128030	13.49#



PART "B" FEMALE COUPLERS

I.D.	Aluminum	Wt. Ea.	Stainless Steel	Wt. Ea.
1-1/2"	50400040	0.70#	50400525	1.77#
2"	50400050	0.86#	50400526	1.96#
2-1/2"	50400055	1.02#	50045530	2.86#
3"	50400060	1.56#	50400528	3.20#
4"	50400070	2.42#	50400530	6.58#
6"	50400075	4.98#	Available upon request	

PART "F" MALE ADAPTERS

I.D.	Aluminum	Wt. Ea.	Stainless Steel	Wt. Ea.
1-1/2"	50400240	0.46#	50400605	1.28#
2"	50400250	0.68#	50400606	1.82#
2-1/2"	50400255	0.96#	Available upon request	
3"	50400260	1.30#	50400608	3.92#
4"	50400270	2.32#	50400610	6.32#
6"	50400275	3.92#	50153015	8.66#



PART "C" FEMALE COUPLERS

I.D.	Aluminum	Wt. Ea.	Stainless Steel	Wt. Ea.
1-1/2"	50400080	0.74#	50400545	1.76#
2"	50400090	0.98#	50400546	2.28#
2-1/2"	50400095	1.28#	50078515	3.10#
3"	50400100	2.20#	50400548	4.66#
4"	50400110	3.16#	50400550	6.98#
6"	50400115	7.70#	50078525	8.91#

PART "DC" DUST CAPS

I.D.	Aluminum	Wt. Ea.	Stainless Steel	Wt. Ea.
1-1/2"	50400280	0.64#	50400655	1.55#
2"	50400290	0.80#	50400656	1.78#
2-1/2"	50400295	0.94#	50400657	2.06#
3"	50400300	1.44#	50197514	2.53#
4"	50400310	2.34#	50400660	5.02#
6"	50400312	4.66#	50198022	9.92#



PART "D" FEMALE COUPLERS

I.D.	Aluminum	Wt. Ea.	Stainless Steel	Wt. Ea.
1-1/2"	50400120	0.80#	50400565	1.52#
2"	50400130	0.92#	50400566	2.32#
2-1/2"	50400135	1.18#	50099014	3.12#
3"	50400140	1.80#	50400568	3.37#
4"	50400150	2.82#	50400570	6.50#
6"	50400155	5.11#	50400573	11.51#

PART "DP" DUST PLUGS

I.D.	Aluminum	Wt. Ea.	Stainless Steel	Wt. Ea.
1-1/2"	50400315	0.25#	50400625	0.72#
2"	50400320	0.38#	50400626	0.96#
2-1/2"	50400325	0.54#	50400627	1.47#
3"	50400330	0.74#	50400628	1.94#
4"	50400340	1.22#	50400630	3.36#
6"	50400345	2.53#	50400636	9.08#

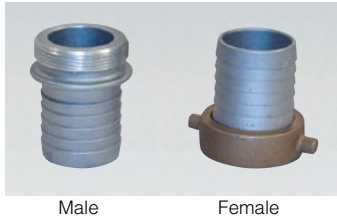
Benefits: No threading, tools, lugs, twisting, springs, ball bearings, or snaps. **Available in:** Aluminum, bronze, stainless steel, monel, cast iron, and polypropylene with stainless steel handles. **Note:** Aluminum only shown in photos. **Other sizes and styles available upon request.**

CAM & GROOVE COUPLING REPLACEMENT PARTS & ACCESSORIES

Gaskets, • Cam Arms • Pins • Safety Chains • Wire Lanyards • Safety Bump Males and Females in black and food grade white • Safety Lock and standard Apache cam and groove female Safety Tie-Downs

CALL APACHE CUSTOMER SERVICE FOR MORE INFORMATION: 1-800-332-3243

PIN-LUG COUPLINGS – ALUMINUM / BRASS



Male Female

PIN-LUG COUPLING SETS

Apache P/N	I.D.	Wt. Ea.
97438100	1-1/2"	0.56#
97438105	2"	0.88#
97438107	3"	2.70#
97438108	4"	4.42#
97438109	6"	8.30#

Applications: For use with hoses handling water and other liquids. Aluminum shanks with brass pin-lug nut. 3"-6" male couplings have pin-lugs. Requires clamps to attach to hose.

MALE – ALUMINUM

Apache P/N	I.D.	Wt. Ea.
43074008	1-1/2"	0.18#
43075500	2"	0.26#
43077007	3"	1.04#
43077260	4"	1.70#
43077287	6"	3.04#

Applications: For use with hoses handling water and other liquids. Male NPSM threads. 3"-6" male couplings have pin-lugs. Requires clamps to attach to hose.

FEMALE – ALUM w/BRASS NUTS

Apache P/N	I.D.	Wt. Ea.
43074504	1-1/2"	0.38#
43076000	2"	0.62#
43077252	3"	1.66#
43077279	4"	2.72#
43077295	6"	5.26#

Applications: For use with hoses handling water and other liquids. Female NPSM threads (requires a gasket to seal). Requires clamps to attach to hose.

GASKETS – EPDM

Apache P/N	I.D.	Wt. Ea.
43081284	1-1/2"	0.01#
43081292	2"	0.02#
43081314	3"	0.05#
43081349	4"	0.06#
43081381	6"	0.08#

Applications: Standard EPDM rubber gaskets for female NPSM pin-lug couplings. Also available in other compounds.



Gasket



SPANNER WRENCHES

Apache P/N	I.D.	Wt. Ea.
43105507	1-1/2"	0.79#
43106007	2"	0.88#
43107003	3"	1.10#
43107518	4"	1.25#
43107520	6"	4.50#

Applications: Plated malleable iron spanner wrench for use on male or female pin-lug couplings.

KING NIPPLES



PLATED STEEL

Apache P/N	I.D.	Wt. Ea.	Apache P/N	I.D.	Wt. Ea.
43050555	1/2"	0.14#	43050585	2-1/2"	1.74#
43050560	3/4"	0.20#	43050590	3"	2.14#
43050565	1"	0.32#	43050600	4"	3.06#
43050570	1-1/4"	0.56#	43050610	5"	4.20#
43050575	1-1/2"	0.72#	43050620	6"	12.24#
43050580	2"	1.10#	43050630	8"	16.44#

Applications: For use with hoses handling water and other liquids. Male pipe threads are the same size as the I.D. of the hose. Clamps are required to attach to hose. **Construction:** Plated steel for rust resistance.

HOSE MENDERS



STEEL

Apache P/N	I.D.	Wt. Ea.	Apache P/N	I.D.	Wt. Ea.
43039008	1/2"	0.07#	43042009	2-1/2"	0.95#
43039504	3/4"	0.13#	43042505	3"	1.44#
43040006	1"	0.27#	43043005	4"	4.39#
43040502	1-1/4"	0.40#	43043501	6"	7.56#
43041002	1-1/2"	0.44#	43043609	8"	14.50#
43041509	2"	0.70#			

Applications: Use to repair or splice damaged hose or extend the length. Mender shanks are the same I.D. on both ends. Clamps are required to attach to hose.

FOOT VALVES



CAST IRON w/LEATHER FLAPPER

Apache P/N	Threads	Wt. Ea.
70003007	1-1/2" Female Pipe Thread	2.75#
70003503	2" Female Pipe Thread	4.50#
70003511	2-1/2" Female Pipe Thread	6.73#
70004003	3" Female Pipe Thread	7.54#
70004518	4" Female Pipe Thread	20.05#
70005018	6" Female Pipe Thread	50.75#

Applications: For use in irrigation, drainage, and construction projects. Valve has leather flapper check to maintain prime.

SUCTION STRAINERS



POLYPROPYLENE

Apache P/N	Threads	Wt. Ea.
70002760	1-1/2" Female Pipe Thread	0.25#
70002780	2" Female Pipe Thread	0.30#
70002800	3" Female Pipe Thread	0.60#

Applications: For use when a foot valve is not required. Strainer helps to keep pump damaging solids from entering the pump.

Construction: Polypropylene strainer is rust, chemical and salt water resistant.



ROUND HOLE - PLATED STEEL

Apache P/N	Threads	Wt. Ea.
70000008	1-1/2" Female Pipe Thread	1.36#
70000504	2" Female Pipe Thread	1.78#
70000700	2-1/2" Female Pipe Thread	2.02#
70001500	3" Female Pipe Thread	3.08#
70002000	4" Female Pipe Thread	2.90#
70002507	6" Female Pipe Thread	6.04#

Applications: For use when a foot valve is not required. Strainer helps to keep pump damaging solids from entering the pump.

Construction: Plated steel for rust resistance.



SQUARE HOLE - PLATED STEEL

Apache P/N	Threads	Wt. Ea.
70009700	1-1/2" Female Pipe Thread	1.12#
70009702	2" Female Pipe Thread	1.74#
70009704	2-1/2" Female Pipe Thread	2.00#
70009706	3" Female Pipe Thread	2.50#
70009708	4" Female Pipe Thread	2.52#

Applications: Suction hose strainer is for use with trash pumps. Large strainer openings allow smaller solids to pass through the pump, but keeps the larger pump damaging solids from entering the pump. **Construction:** Plated steel for rust resistance.

SKIMMER STRAINERS



TOP HOLE - PLATED STEEL

Apache P/N	Threads	Wt. Ea.
70009740	1-1/2" Female Pipe Thread	2.63#
70009732	2" Female Pipe Thread	3.00#
70009734	3" Female Pipe Thread	6.18#



BOTTOM HOLE - PLATED STEEL

Apache P/N	Threads	Wt. Ea.
70009730	1-1/2" Female Pipe Thread	2.63#
70009742	2" Female Pipe Thread	3.00#
70009744	3" Female Pipe Thread	6.18#

Applications: For use when a foot valve is not required. Skimmer helps to keep pump damaging solids from entering the pump.

Construction: Plated steel for rust resistance.

POLYPROPYLENE BALL VALVES

BOLTED

Apache P/N	Description	M.F.G.#	Wt. Ea.	Apache P/N	Description	M.F.G.#	Wt. Ea.
49027950	1/2" FP	61115	0.66#	49030066	3" FP M x F	62047	5.62#
49029950	3/4" FP	61116	0.66#	49030080	1-1/2" FP Nzl	61125	2.58#
49029968	1" FP	61118	1.21#	49030095	2" FP Nzl	61127	3.88#
49029980	1-1/4" FP	61120	1.83#	49029965	1" Std P	61117	0.66#
49030000	1-1/2" FP	61121	1.88#	49029985	1-1/4" Std P	61119	1.17#
49030010	2" FP	61123	2.92#	49030060	2" Std P	61122	1.79#
49030015	2" FP M x F	61876	3.08#	49030090	2" Std P Nzl	61126	2.66#
49030020	3" FP	61124	5.50#	49030063	2" Std P M x F	62046	1.83#

Construction: Manufactured from glass reinforced polypropylene for strength and durability (will never rust or corrode). **Stem Seal:** Viton O-ring. **Body Seal:** EPDM O-ring. **Features:** Unique body-to-flange design allows for low torque on/off operation. Self aligning ball rotates freely against Teflon® seats. **Pressure Rated:** 125 P.S.I. @70°F. **Note:** Replacement parts available. **FP** = Full Port **Std** = Standard Port **Nzl** = Nozzle

COMPACT BOLTED

Apache P/N	Description	M.F.G.#	Wt. Ea.
49030140*	2" FP Male x Female	62308	2.33#
49030142	2" FP Female x Female	62309	2.25#
49030144*	2" FP Male x Male Coupler	62310	2.23#
49030146*	2" FP Female x Male Coupler	62313	2.33#

Construction: Manufactured from glass reinforced polypropylene for strength and durability (will never rust or corrode). **Stem Seal:** Viton O-ring. **Body Seal:** EPDM O-ring. **Features:** Unique body-to-flange design allows for low torque on/off operation. Self aligning ball rotates freely against Teflon® seats. **Pressure Rated:** 125 P.S.I. @70°F. **Note:** Replacement parts available. *Male pipe thread end flange and cam action coupler end flange eliminate the need for additional fittings. **FP** = Full Port.

SINGLE UNION

Apache P/N	Description	M.F.G.#	Wt. Ea.	Apache P/N	Description	M.F.G.#	Wt. Ea.
49015050	1/2"	60409	0.25#	49015150	1-1/2"	60413	1.17#
49015075	3/4"	60410	0.38#	49015200	2"	60414	1.58#
49015100	1"	60411	0.54#	49015300	3"	60415	5.75#
49015125	1-1/4"	60412	0.83#	49015305	1" 45° Nzl Valve	60479	0.58#

Construction: Manufactured from polypropylene with EPDM O-rings. **Features:** Teflon® seats. **Pressure Rated:** 125 P.S.I. @70°F. **Note:** Replacement parts available.

MULTI-PORT

Apache P/N	Description	M.F.G.#	Wt. Ea.
49015310	3/4" True Union	60417	0.63#
49015315	2" Multi-Port	60418	1.80#

Construction: Manufactured from polypropylene with EPDM O-rings. **Features:** Teflon® seats: Three positions settings; bottom to right, bottom to left, or off. **Pressure Rated:** 125 P.S.I. @70°F. **Note:** Replacement parts available.



POLYPROPYLENE LINE STRAINERS

**Y-LINE w/MESH SCREEN**

Apache P/N	I.D. x O.D.	M.F.G.#	Wt. Ea.	Apache P/N	I.D. x O.D.	M.F.G.#	Wt. Ea.
49030181	1/2" I.D.W/20	61472	0.416#	49030200	1-1/4" I.D.W/20	61738	0.916#
49030182	1/2" I.D.W/40	61473	0.416#	49030202	1-1/4" I.D.W/40	61740	0.916#
49030183	1/2" I.D.W/80	61474	0.416#	49030203	1-1/4" I.D.W/80	61741	1.000#
49030184	3/4" I.D.W/20	61475	0.416#	49030204	1-1/2" I.D.W/20	61488	2.000#
49030185	3/4" I.D.W/40	61476	0.416#	49030206	1-1/2" I.D.W/40-20	61489	2.000#
49030190	3/4" I.D.W/80	61477	0.416#	49030207	1-1/2" I.D.W/80-20	61490	2.000#
49030194	1" I.D.W/20	61478	1.000#	49030208	2" I.D.W/20	61493	2.083#
49030195	1" I.D.W/40	61479	1.000#	49030210	2" I.D.W/40-20	61494	2.083#
49030196	1" I.D.W/80	61480	1.083#	49030212	2" I.D.W/80-20	61495	2.083#

Applications: Protects and prevents clogging of pipelines, pumps, and spray tips. **Construction:** Manufactured from glass reinforced polypropylene. EPDM gaskets (standard). **Features:** 20 to 80 mesh 304 stainless steel screens, screen for 3" is polypropylene reinforced and has a 1/2" drain plug in bottom of cap. **Benefits:** Easy access for cleaning **Pressure Rated:** 90 P.S.I. @70°F and (3") 70 P.S.I. @70°F.

Note: Replacement parts available.

**T-LINE w/MESH SCREEN**

Apache P/N	I.D. x O.D.	M.F.G.#	Wt. Ea.	Apache P/N	I.D. x O.D.	M.F.G.#	Wt. Ea.
49030220	1/2" I.D.W/20	61459	0.50#	49030229	3/4" I.D.W/80	61466	0.50#
49030222	1/2" I.D.W/40	61460	0.50#	49030230	1" I.D.W/20	61469	0.50#
49030233	1/2" I.D.W/80	61461	0.50#	49030232	1" I.D.W/40	61470	0.50#
49030225	3/4" I.D.W/20	61464	0.50#	49030234	1" I.D.W/80	61471	0.50#
49030228	3/4" I.D.W/40	61465	0.50#				

Applications: Protects and prevents clogging of pipelines, pumps, and spray tips. **Construction:** Manufactured from polypropylene. **Features:** 20 to 80 mesh 304 stainless steel screens. **Pressure Rated:** 100 P.S.I. @70°F. **Note:** Replacement parts available.

POLYPROPYLENE CAM & GROOVE COUPLINGS

**PART "A" MALE ADAPTER**

Apache P/N	Description	P.S.I. @70°F	M.F.G.#	Wt. Ea.
49010420	1-1/4" I.D.	125#	61223	0.20#
49010425	1-1/2" I.D.	125#	61231	0.21#
49010430	2" I.D.	125#	61239	0.29#
49010450	3" I.D.	90#	61247	0.54#
49010550	4" I.D.	90#	62789	1.50#

**PART "B" FEMALE COUPLER**

Apache P/N	Description	P.S.I. @70°F	M.F.G.#	Wt. Ea.
49030510	1-1/4" I.D.	125#	61267	0.60#
49030515	1-1/2" I.D.	125#	61271	0.62#
49030520	2" I.D.	125#	61275	0.67#
49030525	3" I.D.	90#	61279	1.13#
49010614	4" I.D.	90#	62790	2.10#

**PART "C" FEMALE COUPLER**

Apache P/N	Description	P.S.I. @70°F	M.F.G.#	Wt. Ea.
49030540	1-1/4" I.D.	125#	61268	0.60#
49030545	1-1/2" I.D.	125#	61272	0.62#
49030550	2" I.D.	125#	61276	0.71#
49030555	3" I.D.	90#	61280	1.38#
49010674	4" I.D.	90#	62791	2.50#

**PART "D" FEMALE COUPLER**

Apache P/N	Description	P.S.I. @70°F	M.F.G.#	Wt. Ea.
49030570	1-1/4" I.D.	125#	61269	0.60#
49030575	1-1/2" I.D.	125#	61273	0.62#
49030580	2" I.D.	125#	61277	0.67#
49030585	3" I.D.	90#	61281	1.17#
49010742	4" I.D.	90#	62792	2.20#

**PART "E" MALE ADAPTER**

Apache P/N	Description	P.S.I. @70°F	M.F.G.#	Wt. Ea.
49012370	1-1/4" I.D.	125#	61227	0.20#
49012375	1-1/2" I.D.	125#	61235	0.25#
49012380	2" I.D.	125#	61243	0.38#
49012400	3" I.D.	90#	61251	0.71#
49012500	4" I.D.	90#	62793	2.00#

**PART "F" MALE ADAPTER**

Apache P/N	Description	P.S.I. @70°F	M.F.G.#	Wt. Ea.
49013990	1-1/4" I.D.	125#	61228	0.20#
49013995	1-1/2" I.D.	125#	61236	0.21#
49014000	2" I.D.	125#	61244	0.33#
49014025	3" I.D.	90#	61252	0.67#
49014300	4" I.D.	90#	62794	1.80#

**PART "DC" DUST CAP**

Apache P/N	Description	P.S.I. @70°F	M.F.G.#	Wt. Ea.
49030600	1-1/4" I.D.	125#	61274	0.60#
49030600	1-1/2" I.D.	125#	61274	0.60#
49030610	2" I.D.	125#	61278	0.70#
49030615	3" I.D.	90#	61282	1.04#
49010806	4" I.D.	90#	62795	1.80#

**PART "DP" DUST PLUG**

Apache P/N	Description	P.S.I. @70°F	M.F.G.#	Wt. Ea.
49014745	1-1/4" I.D.	125#	61238	0.20#
49014745	1-1/2" I.D.	125#	61238	0.20#
49014750	2" I.D.	125#	61246	0.21#
49014800	3" I.D.	90#	61254	0.38#
49014850	4" I.D.	90#	62796	0.60#

Construction: Glass reinforced polypropylene with EPDM gaskets and 304 Stainless Steel cam arm/pins. **Features:** Interchangeable with other cam action couplers and adapters. **Note:** 1-1/4" couplers and adapters will interchange with 1-1/2" couplers and adapters. Only the threads and barbs are 1-1/4". +15% attached. **Replacement parts available.** **WARNING: Don't release cam arms when liquid in the line is under pressure.**

POLYPROPYLENE SCHEDULE 80 THREADED FITTINGS



TEES

Apache P/N	Description	M.F.G.#	Wt. Ea.	Apache P/N	Description	M.F.G.#	Wt. Ea.
49030715	1/2"	62209	0.11#	49030723	1-1/2"	62213	0.50#
49030717	3/4"	62210	0.14#	49030725	2"	62190	0.70#
49030719	1"	62211	0.23#	49030727	3"	62214	1.90#
49030721	1-1/4"	62212	0.36#				

Construction: Manufactured from glass reinforced polypropylene for strength and durability. **Features:** Schedule 80 design.
Pressure Rated: 150 P.S.I. @70°F.



90° ELBOWS

Apache P/N	Description	M.F.G.#	Wt. Ea.	Apache P/N	Description	M.F.G.#	Wt. Ea.
49030729	1/2"	62215	0.08#	49030733	1-1/2"	62219	0.31#
49030730	3/4"	62216	0.10#	49030735	2"	62191	0.50#
49030731	1"	62217	0.16#	49030736	3"	62220	1.40#
49030732	1-1/4"	62218	0.25#				

Construction: Manufactured from glass reinforced polypropylene for strength and durability. **Features:** Schedule 80 design.
Pressure Rated: 150 P.S.I. @70°F.



PIPE COUPLINGS

Apache P/N	Description	M.F.G.#	Wt. Ea.	Apache P/N	Description	M.F.G.#	Wt. Ea.
49030737	1/2"	62237	0.11#	49030743	1-1/2"	62241	0.30#
49030739	3/4"	62238	0.09#	49030745	2"	62194	0.37#
49030740	1"	62239	0.12#	49030747	3"	62242	1.00#
49030741	1-1/4"	62240	0.20#				

Construction: Manufactured from glass reinforced polypropylene for strength and durability. **Features:** Schedule 80 design.
Pressure Rated: 150 P.S.I. @70°F.



CROSSES

Apache P/N	Description	M.F.G.#	Wt. Ea.	Apache P/N	Description	M.F.G.#	Wt. Ea.
49030777	3/4"	62262	0.38#	49030783	1-1/2"	62265	0.61#
49030779	1"	62263	0.29#	49030785	2"	62202	0.79#
49030781	1-1/4"	62264	0.76#				

Construction: Manufactured from glass reinforced polypropylene for strength and durability. **Features:** Schedule 80 design.
Pressure Rated: 150 P.S.I. @70°F.



NIPPLES

Apache P/N	Description	M.F.G.#	Wt. Ea.	Apache P/N	Description	M.F.G.#	Wt. Ea.
49030626	1/2" x Short	62221	0.02#	49030641	1-1/4" x 6"	62228	0.23#
49030627	1/2" x 3"	62222	0.04#	49030652	1-1/2" x Short	60547	0.16#
49030628	3/4" x Short	60554	0.04#	49030705	1-1/2" x 4"	62229	0.15#
49030629	3/4" x 4"	62223	0.08#	49030707	1-1/2" x 6"	62230	0.34#
49030631	3/4" x 6"	62224	0.13#	49030657	2" x Short	60548	0.25#
49030700	1" x Short	60555	0.05#	49030658	2" x 4"	62192	0.27#
49030702	1" x 4"	62225	0.01#	49030659	2" x 6"	62193	0.40#
49030703	1" x 6"	62226	0.16#	49030708	3" x Short	61769	0.54#
49030635	1-1/4" x Short	60556	0.08#	49030710	3" x 6"	62232	0.79#
49030638	1-1/4" x 4"	62227	0.15#				

Construction: Manufactured from glass reinforced polypropylene for strength and durability. **Features:** Schedule 80 design.
Pressure Rated: 150 P.S.I. @70°F.



REDUCER NIPPLES

Apache P/N	Description	M.F.G.#	Wt. Ea.	Apache P/N	Description	M.F.G.#	Wt. Ea.
49030646	3/4" x 1/2"	62233	0.04#	49030651	1-1/2" x 1-1/4"	62236	0.16#
49030647	1" x 3/4"	62234	0.06#	49030653	2" x 1-1/2"	60549	0.21#
49030649	1-1/4" x 1"	62235	0.10#	49030654	3" x 2"	61768	0.46#

Construction: Manufactured from glass reinforced polypropylene for strength and durability. **Features:** Schedule 80 design.
Pressure Rated: 150 P.S.I. @70°F.

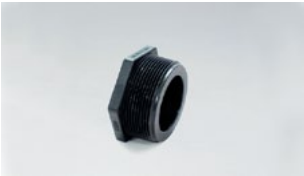
POLYPROPYLENE SCHEDULE 80 THREADED FITTINGS CONTINUED



REDUCER BUSHINGS

Apache P/N	Description	M.F.G.#	Wt. Ea.	Apache P/N	Description	M.F.G.#	Wt. Ea.
49030787	1/2" x 1/4"	62267	0.02#	49030797	1-1/4" x 3/4"	62277	0.08#
49030788	1/2" x 3/8"	62268	0.01#	49030798	1-1/4" x 1"	62278	0.06#
49030789	3/4" x 1/8"	62269	0.04#	49030799	1-1/2" x 3/4"	62279	0.13#
49030790	3/4" x 1/4"	62270	0.04#	49030780	1-1/2" x 1"	62280	0.11#
49030791	3/4" x 3/8"	62271	0.03#	49030782	1-1/2" x 1-1/4"	62281	0.11#
49030792	3/4" x 1/2"	62272	0.03#	49030805	2" x 3/4"	62195	0.20#
49030793	1" x 1/8"	62273	0.07#	49030806	2" x 1"	62196	0.18#
49030794	1" x 1/4"	62274	0.07#	49030807	2" x 1-1/4"	62197	0.13#
49030795	1" x 1/2"	62275	0.06#	49030808	2" x 1-1/2"	62198	0.13#
49030796	1" x 3/4"	62276	0.05#	49030810	3" x 1-1/2"	62282	0.38#
				49030812	3" x 2"	60330	0.33#

Construction: Manufactured from glass reinforced polypropylene for strength and durability. **Features:** Schedule 80 design. **Pressure Rated:** 150 P.S.I. @70°F.



PIPE PLUGS

Apache P/N	Description	M.F.G.#	Wt. Ea.	Apache P/N	Description	M.F.G.#	Wt. Ea.
49030766	1/2"	62255	0.02#	49030771	1-1/2"	62259	0.10#
49030767	3/4"	62256	0.04#	49030770	2"	62201	0.14#
49030768	1"	62257	0.06#	49030772	3"	62260	0.35#
49030769	1-1/4"	62258	0.08#				

Construction: Manufactured from glass reinforced polypropylene for strength and durability. **Features:** Schedule 80 design. **Pressure Rated:** 150 P.S.I. @70°F.



90° STREET ELBOWS

Apache P/N	Description	M.F.G.#	Wt. Ea.	Apache P/N	Description	M.F.G.#	Wt. Ea.
49030750	1/2"	62243	0.06#	49030754	1-1/2"	62247	0.29#
49030751	3/4"	62244	0.08#	49030755	2"	62199	0.42#
49030752	1"	62245	0.13#	49030758	3"	62248	1.30#
49030753	1-1/4"	62246	0.22#				

Construction: Manufactured from glass reinforced polypropylene for strength and durability. **Features:** Schedule 80 design. **Pressure Rated:** 150 P.S.I. @70°F.



PIPE CAPS

Apache P/N	Description	M.F.G.#	Wt. Ea.	Apache P/N	Description	M.F.G.#	Wt. Ea.
49030759	3/4"	62250	0.09#	49030765	2"	62200	0.29#
49030761	1"	62251	0.09#	49030764	3"	62254	0.71#
49030763	1-1/2"	62253	0.12#				

Construction: Manufactured from glass reinforced polypropylene for strength and durability. **Features:** Schedule 80 design. **Pressure Rated:** 150 P.S.I. @70°F.



KING NIPPLES

Apache P/N	Description	M.F.G.#	Wt. Ea.	Apache P/N	Description	M.F.G.#	Wt. Ea.
49030650	1-1/2"	61319	0.17#	49030660	3"	61321	0.67#
49030655	2"	61861	0.25#				

Construction: Manufactured from glass reinforced polypropylene for strength and durability.



HOSE BARBS

Apache P/N	Description	M.F.G.#	Wt. Ea.	Apache P/N	Description	M.F.G.#	Wt. Ea.
49030620	1/2"	61303	0.02#	49030668	1"	61305	0.04#
49030625	3/4"	61304	0.02#				

Construction: Manufactured from polypropylene.



SWITCH ADAPTERS

Apache P/N	Description	M.F.G.#	Wt. Ea.	Apache P/N	Description	M.F.G.#	Wt. Ea.
49030670	3/4" x 1/4"	61326	0.08#	49030675	3/4" x 3/8"	61327	0.08#

Construction: Manufactured from glass reinforced polypropylene for strength and durability. **Features:** Self aligning grooves. **Benefits:** Allows quick changing of spray nozzles. **Note:** Switch adapters may be used with female couplers - 1/2" B# 61255 or 3/4" B# 61259.

MICRO WORM GEAR CLAMPS



300 STAINLESS STEEL

Apache P/N	Band Width	Screw	Min. Dia	Max. Dia
48016998	5/16"	1/4" Hex	1/4"	5/8"
48017000	5/16"	1/4" Hex	5/16"	5/8"
48017001	5/16"	1/4" Hex	5/16"	7/8"
48017002	5/16"	1/4" Hex	7/16"	3/4"
48017004	5/16"	1/4" Hex	1/2"	7/8"
48017006	5/16"	1/4" Hex	1/2"	1"

WORM GEAR CLAMPS



304 STAINLESS STEEL

Apache P/N	Band Width	Screw	Min. Dia	Max. Dia	Apache P/N	Band Width	Screw	Min. Dia	Max. Dia
48000509	1/2"	5/16" Hex	7/16"	29/32"	48006000	9/16"	5/16" Hex	1-5/16"	3-1/4"
48001009	1/2"	5/16" Hex	7/16"	1"	48006507	9/16"	5/16" Hex	1-5/8"	3-1/2"
48001505	1/2"	5/16" Hex	9/16"	1-1/16"	48007007	9/16"	5/16" Hex	1-7/8"	3-3/4"
48002005	1/2"	5/16" Hex	11/16"	1-1/4"	48007252	9/16"	5/16" Hex	2-1/8"	4"
48002501	9/16"	5/16" Hex	3/4"	1-1/2"	48008003	9/16"	5/16" Hex	2-5/8"	4-1/2"
48003001	9/16"	5/16" Hex	3/4"	1-3/4"	48008518	9/16"	5/16" Hex	3-1/8"	5"
48003508	9/16"	5/16" Hex	1"	2"	48009018	9/16"	5/16" Hex	3-5/8"	5-1/2"
48004008	9/16"	5/16" Hex	1-5/16"	1-9/16"	48009506	9/16"	5/16" Hex	4-1/2"	6"
48004504	9/16"	5/16" Hex	1-9/16"	2-1/2"	48010008	9/16"	5/16" Hex	4-3/4"	6-1/2"
48005004	9/16"	5/16" Hex	7/8"	2-3/4"	48010504	9/16"	5/16" Hex	4"	7"
48005500	9/16"	5/16" Hex	1-1/8"	3"					

Applications: Specially suited for agricultural and industrial applications. **Features:** All Stainless Steel construction with a full size 9/16" band. The wider band provides 12-1/2% more sealing surface area than conventional 1/2" bands. **Screw:** 5/16" hex-head. 410 grade Stainless Steel. **Band and Housing:** 9/16" wide and 300 grade Stainless Steel.

ULTRA T-BOLT CLAMPS



304 STAINLESS STEEL

Apache P/N	UT#	Min. Dia	Max. Dia	Apache P/N	UT#	Min. Dia	Max. Dia
43081998	UT-130	1.30"	1.70"	43082022	UT-313	3.13"	3.44"
43082000	UT-162	1.62"	1.87"	43082024	UT-331	3.31"	3.62"
43082002	UT-181	1.81"	2.06"	43082026	UT-343	3.43"	3.75"
43082004	UT-193	1.93"	2.18"	43082028	UT-350	3.50"	3.85"
43082008	UT-218	2.18"	2.50"	43082030	UT-425	4.25"	4.56"
43082012	UT-231	2.31"	2.62"	43082031	UT-438	4.38"	4.75"
43082016	UT-250	2.50"	2.81"	43082032	UT-456	4.56"	4.94"
43082020	UT-287	2.87"	3.18"				

Features: Stainless Steel band, bolt and saddle resist rust, chemicals and corrosion. Clamp rated to 75" lbs. (applied torque). Saddle creates uniform sealing pressure around coupling shank. Sold in bags of ten each. Carbon steel locking nut with nylon insert eliminates nut and bolt sizing. **Construction:** Four spot welds on each end of clamp for extra strength.

Note: Due to possible fluctuations in outer diameter of hose, each individual installation should be checked.

H-D SUPER CLAMPS



300 STAINLESS STEEL

Apache P/N	Band Width	Bolt	Min. Dia	Max. Dia	Apache P/N	Band Width	Bolt	Min. Dia	Max. Dia
43082316	22mm	10 Hex	1.73"	1.85"	43082334	24mm	13 Hex	3.39"	3.58"
43082320	22mm	10 Hex	2.05"	2.17"	43082336	24mm	13 Hex	3.62"	3.82"
43082322	22mm	10 Hex	2.2"	2.32"	43082342	24mm	13 Hex	4.45"	4.76"
43082324	22mm	10 Hex	2.36"	2.48"	43082344	24mm	13 Hex	4.8"	5.12"
43082326	22mm	13 Hex	2.52"	2.64"					

Applications: For rugged service in agricultural, irrigation, municipal, industrial and quarry/mining applications.

Construction: 3 spot welds for extra strength. **Note:** Careful measurement of hose O.D. is critical to selecting the proper clamp size range. **Clamps available in stainless steel or white zinc plated steel. Contact Apache for sizes and specifications.**

ADDITIONAL ITEMS ALSO AVAILABLE

Plated malleable iron single and double bolts clamps

Note: Measure hose O.D. to determine clamp size needed.

BAND-IT® CENTER PUNCH CLAMP & TOOL SYSTEM



CENTER PUNCH PREFORMED CLAMPS – CARBON STEEL



Carbon Steel



Stainless Steel

Apache P/N	Clamp I.D.	M.F.G.#	Band Width	Qty. Bx.	Wt. Bx.
40029100	13/16"	(CP03)	3/8"	100	3.6#
40029105	1-3/8"	(CP311)	3/8"	100	4.6#
40029120	1-1/2"	(CP06)	5/8"	100	9.7#
40029130	2"	(CP08)	5/8"	100	11.5#
40029145	2-3/4"	(CP11)	5/8"	50	7.3#
40029155	3-1/2"	(CP14)	5/8"	50	8.7#
40029160	4"	(CP16)	5/8"	25	4.9#
40029165	5"	(CP20)	5/8"	25	5.9#
40029175	7"	(CP28)	5/8"	25	7.4#

Applications: Use to attach pin-lug couplings, kc nipples, cam and groove couplers, and hose menders to hose. **Construction:** Heat treated galvanized steel band with stainless steel buckles for maximum locking strength. Use Band-It® T300 or S38 center punch tool to install.

Also Available: Sizes 13/16" through 8" I.D.

CENTER PUNCH PREFORMED CLAMPS – STAINLESS STEEL

Apache P/N	Clamp I.D.	M.F.G.#	Band Width	Qty. Bx.	Wt. Bx.
40039625	13/16"	CP3S	3/8"	100	3.6#
40039627	1-3/8"	CP311S	3/8"	100	4.6#
40039629	1-1/2"	CP6S	5/8"	100	9.7#
40039631	2"	CP8S	5/8"	100	11.5#
40039634	2-3/4"	CP11S	5/8"	50	7.3#
40039637	3-1/2"	CP14S	5/8"	50	8.7#
40039639	4"	CP16S	5/8"	25	4.9#
40039642	5"	CP20S	5/8"	25	5.9#
40039645	7"	CP28S	5/8"	25	7.4#

Applications: Used to attach pin-lug couplings, kc nipples, cam and groove couplers, ball and socket couplers, and hose menders.

Construction: High strength stainless steel for maximum locking strength, with better resistance to corrosion than galvanized steel. Use Band-It® T300 or S38 center punch tool to install.



Center Punch Tool



Center Punch Hand Tool

CENTER PUNCH TOOLS

Apache P/N	Description	Wt. Ea.
40049004	T300 Center Punch Tool for 5/8" Bands	3.15#
40049005	3/8" Adapter for T300 Center Punch Tool	0.02#
40049509	Center Punch Hand Tool for 3/8" to 5/8" Bands	1.10#

Applications: Ratchet action tensioning tools are used to tighten and then lock center punch clamps by striking the tool punch with a mallet or hammer.

BAND-IT® JR. SMOOTH ID CLAMPS & TOOLS

PREFORMED CLAMPS – STAINLESS STEEL



Apache P/N	Clamp I.D.	M.F.G.#	Band Width	Qty. Bx.	Wt. Bx.
40029073	13/16"	JS201	3/8"	100	3.6#
40029039	1-3/8"	JS202	3/8"	100	5.0#
40029045	1-1/2"	JS205	5/8"	100	10.4#
40029047	2"	JS207	5/8"	100	12.2#
40029050	2-3/4"	JS210	5/8"	50	9.2#
40029052	3-1/2"	JS212	5/8"	50	10.8#
40029053	4"	JS213	5/8"	25	6.1#
40029068	5"	JS215	5/8"	25	7.2#
40029080	8"	JS219	5/8"	25	11.0#

Applications: Used to attach pin-lug couplings, kc nipples, cam and groove couplers, ball and socket couplers, and hose menders.

Construction: High strength Stainless Steel for maximum locking strength, with better resistance to corrosion than galvanized steel. Use Band-It® C001 or J001 Pok-It II tool to install.

BAND-IT® TOOL

Apache P/N	Description	Wt. Ea.
40047018	C001 Banding Tool	4.40#

Applications: Used to apply Band-It® bands/buckles. Apply preformed jr. smooth I.D. clamps with J001 adapter. **Construction:** Drop forged steel Band-It® tool has a tensioning capability of +2,400# (includes built in band cutter). **Note:** Band-It® steel hose nipples also available.

BAND-IT® JR. TOOL

Apache P/N	Description	Wt. Ea.
40048502	J00169 Band-It® Jr. Adapter – for C00169 Tool	1.44#

Applications: Use with the C001 tool to apply Band-It® Jr. preformed clamps. Fits over tool nose. Clamp is locked under full tension and clamp tail is cut off with adapter cut-off action.



V-BELTS

**ACE PUMP MULTI RIBBED POLY V-BELT**

Apache P/N	Description	# Ribs	Pitch	Width	Wt. Oz.
34007500	BAC-28-8 (400J8)	8	40	3/4"	3.0
34007450	BAC-28-8M (310J8)	8	31	3/4"	2.6
34007504	BAC-28-10 (400J10)	10	40	1"	3.7
34007454	BAC-28-10M (310J10)	10	31	1"	3.0

Features: Quiet vibration free operation on light duty drives, space saving compact design. Higher efficiency than conventional v-belts.

**HYPRO PUMP RUBBER SYNCHRO-LINK TIMING BELTS**

Apache P/N	Description	# Teeth	Pitch	Width	Wt. Oz.
34006230	ST-686 (270L100G)	72	27.0	1"	2.7
34006270	ST-687 (345L100G)	92	34.5	1"	3.2

Features: Minimal noise vibration, non-slip, positive performance belt. Low maintenance/tension requirements, space/weight savings, clean/quiet operation.

GAUGES

**2-1/2" FACE****ANHYDROUS AMMONIA 1/4" MNPT LOWER MOUNT**

Apache P/N	2-1/2" Face	Wt. Ea.
99019150	0-60 P.S.I.	0.35#
99019160	0-150 P.S.I.	0.35#
99019180	0-400 P.S.I.	0.35#

Applications: For use with agricultural ammonia

**1-1/2" FACE****SILICONE LUBRICATED 1/8" MNPT LOWER MOUNT**

Apache P/N	2-1/2" Face	Wt. Ea.
99019276	0-60 P.S.I.	0.15#
99019278	0-100 P.S.I.	0.15#
99019280	0-200 P.S.I.	0.15#

**2-1/2" FACE****DRY PRESSURE 1/4" MNPT LOWER MOUNT**

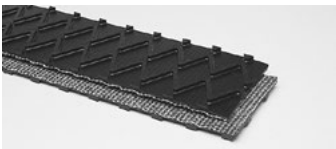
Apache P/N	2-1/2" Face	Wt. Ea.
99019005	0-60 P.S.I.	0.35#
99019268	0-100 P.S.I.	0.35#
99019269	0-160 P.S.I.	0.35#
99019270	0-400 P.S.I.	0.35#
99019272	0-1000 P.S.I.	0.35#

**2-1/2" FACE****GLYCERINE FILLED 1/4" MNPT LOWER MOUNT**

Apache P/N	2-1/2" Face	Wt. Ea.
99019281	0-60 P.S.I.	0.45#
99019282	0-100 P.S.I.	0.45#
99019284	0-400 P.S.I.	0.45#
99019286	0-1000 P.S.I.	0.45#
99019288	0-3000 P.S.I.	0.45#
99019290	0-5000 P.S.I.	0.45#

CONTACT APACHE CUSTOMER SERVICE FOR SPECIFICATIONS, PRICING, AND AVAILABILITY OR FOR INFORMATION ON GAUGES NOT SHOWN ABOVE, AT 1-800-553-5455.

PVC FERTILIZER BELTS



BULK BELTING

Apache P/N	Description	Min. Pulley Dia.	Spec#	Belt Wt.
20033600	PVC 100 Black Bucket Top x FS	2"	62A	0.085

This PVC profile top belt features a multitude of "bucket" projections to aggressively assist the belt in elevating bulk solids. In very wet applications, the belt can run in the opposite direction to assist in draining off fluids.

Temp. Range: 20° F to 180° F. **Thickness:** 15/64". **Recommended Fasteners:** #1A Hook; #125 Staple; #7 Alligator®.

Apache P/N	Description	Min. Pulley Dia.	Spec#	Belt Wt.
20034603	PVC 120 Black CTII x FS	2-1/2"	55A	0.088

The herringbone pattern of alternating rows of solid PVC Chevron profiles form a cover, highly capable of moving free flowing bulk solids. Materials such as grains, food stuffs, feeds and fertilizers can be carried up steep inclines.

Temp. Range: 20° F to 180° F. **Thickness:** 1/4". **Weight:** .088 P.I.W. **Recommended Fasteners:** #1 Hook; #125 Staple; #7 Alligator®.

Apache P/N	Description	Min. Pulley Dia.	Spec#	Belt Wt.
20035525	PVC 120 Low Temp Black Crescent Top x FS	2"	62B	0.085

Crescent top profiles project from the belt surface to aggressively assist belt in moving bulk solids. By running the belt in the opposite direction, the crescent shapes can assist in draining liquids from wet products. Crescents overlap ensuring a smooth and quiet running on return rolls.

Temp. Range: -20° F to 180° F. **Thickness:** 15/64". **Weight:** .085 P.I.W. **Recommended Fasteners:** #1SP Hook; #62 Staple; #7 Alligator®.

Apache P/N	Description	Min. Pulley Dia.	Spec#	Belt Wt.
20034800	PVC 120 Black Z Top	2-1/2"	63B	0.090

Unique profile design for increased capacity and minimal slippage. Special design reduces noise levels on return idlers. Uses include tube conveying, grain, wood work, and seed applications. Strong synthetic carcass and PVC compounds combine for high strength and durability in light oil, grease, water, and industrial chemical applications.

Temp. Range: 20° F to 180° F. **Thickness:** 15/64". **Weight:** .090 P.I.W. **Recommended Fasteners:** #1 Hook; #125 Staple; #7 Alligator®.

Apache P/N	Description	Min. Pulley Dia.	Spec#	Belt P.I.W. Wt.
20035480	120 Blue Polarflex AR Crescent Top x Brush	2"	265	0.085

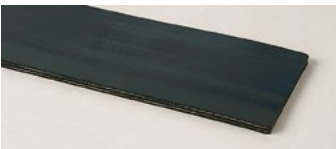
Crescent top with abrasion-resistant qualities that match RMA Grade II covers. Maintains flexibility at low temperatures as low as -40°F, allowing belt to wrap small pulleys. Popular uses include tubeveyors, feed lots, elevators, cold storage, harvesters, abrasive materials, and grain/seed handling. Available in 72" widths.

Temp. Range: -40° F to 180° F. **Thickness:** 15/64". **Weight:** .100 P.I.W. **Recommended Fasteners:** #1 Hook; #125 Staple; #7 Alligator®.

Belts listed above are available in any width (to 72" unless noted) with lengths up to 600'.

For additional belt specifications request the Belting Products and Services catalog AP16a or contact customer service 1-800-553-5455. Bulk or pre-cut and laced replacement round baler belt is available for all makes and models. For belt and baler information contact customer service. Apache stocks a full line of Clipper® and Flexco® lacing for all belt specifications.

BALER BELTS



BULK BELTING

Apache P/N	Description	Min. Pulley Dia.	Spec#	Belt Wt.
20022207	2 Ply 150 Cover x Cover Baler Belt	4"	39	0.100

Popular specification for older model hay balers. Excellent fastener retention, with good impact resistance. Nylon fabric resists moisture and mildew. Special SBR compounds resist weathering and the ozone effects.

Temp. Range: -25° F to 225° F. **Thickness:** 13/64". **Recommended Fasteners:** #3-4½ HT Hook.

Apache P/N	Description	Min. Pulley Dia.	Spec#	Belt Wt.
20029178	3 Ply Diamond Top Baler Belt	4"	38E	0.135
21001810-ARJ	7" x 525" 3 Ply Diamond Top Laced w/Alligator® Rivet Lace			42
21001820-ARJ	7" x 531" 3 Ply Diamond Top Laced w/Alligator® Rivet Lace			43

Excellent profile top cover belt has exceptional stretch characteristics without loss of fastener retention. Ideal choice for replacement belts on various round hay baler equipment requiring a grip top surface. Special SBR compounds resist weathering, sunlight, and the effects of sitting during long periods of no-usage. Special compounds in cover provide excellent flex life.

Temp. Range: -25° F to 225° F. **Thickness:** 1/4". **Recommended Fasteners:** Alligator® Rivet or #4½ RHT Hooks.

BALER BELTS



BULK BELTING

Apache P/N	Description	Min. Pulley Dia.	Spec#	Belt Wt.
20029177	3 Ply Continuous Chevron Baler Belt	4"	36E	0.125
21001803	7" x 420.5" 3 Ply Conti. Chev. Laced w/Clipper® Lace			32
21001826	7" x 562.5" 3 Ply Conti. Chev. Laced w/Clipper® Lace			47
21001826-ARJ	7" x 562.5" 3 Ply Conti. Chev. Laced w/Alligator® Lace			47

Excellent grip, Chevron top cover belt has exceptional stretch characteristics without loss of fastener retention. Ideal choice for replacement belts on various round hay baler equipment requiring a grip top surface. Special SBR compounds resist weathering, sunlight and the effects of sitting during long periods of non-usage. Special compounds in cover provide excellent flex life.

Temp. Range: -25° F to 225° F. **Thickness:** 1/4". **Recommended Fasteners:** Alligator Rivet® or #4½ RHT Hooks.

Apache P/N	Description	Min. Pulley Dia.	Spec#	Belt Wt.
20029176	3 Ply Mini Rougtop Belt		37E	0.188
21001777	7" x 343" 3 Ply MRT Laced w/Clipper® Lace			
21001777-ARJ	7" x 343" 3 Ply MRT Laced w/Alligator® Lace			
21001804	7" x 420.5" 3 Ply MRT Laced w/Clipper® Lace			
21001805	7" x 420.5" 3 Ply MRT Laced w/Alligator® Lace			

Excellent grip, Mini Rougtop cover belt has exceptional stretch characteristics without loss of fastener retention. Ideal choice for replacement belts on various round hay baler equipment requiring a grip top surface. Special SBR compounds resist weathering, sunlight and the effects of sitting during long periods of non-usage. Special compounds in cover provide excellent flex life.

Temp. Range: -25° F to 225° F. **Thickness:** 1/4". **Recommended Fasteners:** Alligator Rivet® or #4½ RHT Hooks.

Apache P/N	Description	Min. Pulley Dia.	Spec#	Belt Wt.
20029175	3 Ply Cover x Cover Baler Belt	4"	35E	0.123

Excellent grip, textured cover belt has exceptional stretch characteristics without loss of fastener retention. Ideal choice for replacement belts on various round hay baler equipment requiring a grip top surface. Special SBR compounds resist weathering, sunlight, and the effects of sitting during long periods of non-usage. Special compounds in cover provide excellent flex life, making it a good buy.

Temp. Range: -25° F to 225° F. **Thickness:** 1/4". **Recommended Fasteners:** #3-4½ HT or #4½ RHT Hooks.

FLEXCO® FASTENERS

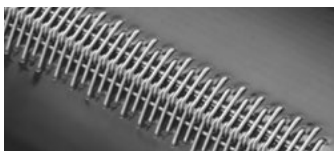


Increase belt conveyor safety and productivity with these belt conveyor maintenance solutions:

Bolt Solid Plate • Rivet Solid Plate • Bolt Hinge • Rivet Hinge • Staple • Lacing • Rivet • Wire Hook • Spiral Lace • Plastic

CONTACT APACHE CUSTOMER SERVICE FOR SPECIFICATION AND PRICING INFORMATION

FLEXCO® FASTENER SOLUTIONS



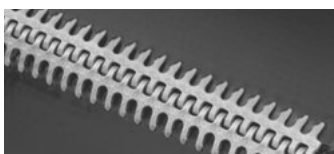
Product	Description
Clipper® Wire Hook System	For belts up to 13/32" (10mm) thick

Applications: Clipper® hooks provide a low-profile, economical splice. The splice is machine-applied for consistency and easier installation. Clipper® offers a variety of lacers available for on-site maintenance repairs, production lacing or other special application needs. Clipper® hooks are designed for belts up to 13/32" (10mm) and are available in a wide array of sizes, configurations and metal types. Typical applications include package/parts handling, food processing, general manufacturing, agriculture, and filter media. **Installation:** Complete instructions come with fastener kits.



Product	Description
Alligator® Ready Set™ Staple Fastener System	For belts up to 1/4" (6.45mm) thick

Applications: The Alligator® Ready Set™ Staple Fastener system is a strong and abrasion-resistant splice. Simple installation only requires that the fastener strip is fitted to the belt end. Insert the special installation tool and the staples should be driven with a hammer for a strong, dependable splice. Ready Set™ fasteners are designed for belts from 1/16" (1.5mm) to 1/4" (6.4mm) thick. Typical applications include package/parts conveying, food/sanitary contact, agricultural harvesting and handling, recycling/crop handling, and wood products. **Installation:** Complete instructions included with fastener kits.



Product	Description
Alligator® Belt Lacing Fastener System	For belts up to 1/2" (13mm) thick

Applications: The Alligator® Belt Lacing is a hammer-applied splice that does not require special installation tools. Ideal for low-volume users and designed for belts up to 1/2" (13mm) thick. Alligator® lacing is available in continuous lengths to fit any belt width. **Installation:** Complete instructions included with fastener kits. No special tools required.



Product	Description
Alligator® Rivet Fastener System	For belts 1/8" to 7/32" (3.2mm to 5.6mm) thick

Applications: Rugged stainless steel design is abrasion and corrosion-resistant and has long life for severe, heavy-duty applications. Can be applied to all types of baler belting, including used belts. **Installation:** Easy installation with portable applicator tool and a hammer.

AGRICULTURAL BELTING, ACCESSORIES AND SERVICES

ON-SITE BELT INSTALLATION, SPLICING, SERVICE, VULCANIZATION, AND BELT TRAINING

Buckets • Bolts • Idlers • Pulleys • Skirtboard Rubber • Scrapers • Elevator • Grain Forage Blower • Tubeveyor • Tub Grinder • Feeder Wagon • Bunk Feeder • Combine Pick-Up Conveyor Covers • Tank Mounting Pad/Strap

CONTACT APACHE CUSTOMER SERVICE FOR SPECIFICATION AND PRICING INFORMATION ON THESE AND OTHER BELT PRODUCTS AND SERVICES 1-800-553-5455

BALER BELT REPAIR SPLICES LACING EQUIPMENT FOR HOOKS

Apache P/N	Description	Width	Lace Hook Size	Wt. Ea.
25049500	R-4 Belt Vise Lacer/4" Alligator® Tool	4"	Reg. Series	1.35#

The 4" Clipper® Vise Lacer is the ideal lacing tool for the user with only a few conveyor belts, while providing the reliability and performance of a machine splice. Simply place the lacer in a vise, load the hooks, insert the belt, and close the vise. The exclusive built-in pressure plate ensures a consistent clinch for long-lasting splices. Offers the continuous lacing feature which, with multiple operations, allows the user to lace belts wider than the width of the lacer. Stores in a regular tool box.

25049505	R-7 Belt Vise Lacer/7" Alligator® Tool	7"	Reg. Series	2.10#
----------	--	----	-------------	-------

The 7" Clipper® Vise Lacer is the ideal lacing tool for the user with only a few conveyor belts, while providing the reliability and performance of a machine splice. Simply place the lacer in a vise, load the hooks, insert the belt, and close the vise. The exclusive built-in pressure plate ensures a consistent clinch for long-lasting splices and offers the continuous lacing feature which (with multiple operations) allows the user to lace belts wider than the width of the lacer. Stores in a regular tool box.

25049590	R-10 Belt Vise Lacer/10" Alligator® Tool	10"	Reg. Series	3.00#
----------	--	-----	-------------	-------

The 10" Clipper® Vise Lacer is the ideal lacing tool for the user with only a few conveyor belts, while providing the reliability and performance of a machine splice. Simply place the lacer in a vise, load the hooks, insert the belt, and close the vise. The exclusive built-in pressure plate ensures a consistent clinch for long-lasting splices and offers the continuous lacing feature which (with multiple operations) allows the user to lace belts wider than the width of the lacer. Stores in a regular tool box.

Apache P/N	Description	Width	Wt. Ea.
25050622	RL-24 Roller Lacer	24"	37#
25050626	RL-36 Roller Lacer	36"	44#
25050633	RL-48 Roller Lacer	48"	52#
25050638	RL-60 Roller Lacer	60"	58#

A manual roller lacer for quick, onsite installation. Made from aircraft aluminum, this lacer remains very lightweight allowing it to be transferred to the job site for quick installations. Simple installation procedures, combined with the ability to clamp and secure the belt, make splicing a one-person job.

Apache P/N	Description	Width	Wt. Ea.
25050605	Baler Belt Lacer 7" (178mm)	7"	50.00#

A manual, lever-action baler belt lacer specially designed for lacing round hay baler belts in the shop or the field. Installs perfect belt splices in hay baler belts every time. Designed to create an optimal hook clinch for long lasting splices that withstand the tugging, scraping, and high abuse situations typical of round hay baler belts. 7" wide.

25050606	Baler Belt Lacer 10" (254mm)	10"	51.02#
----------	------------------------------	-----	--------

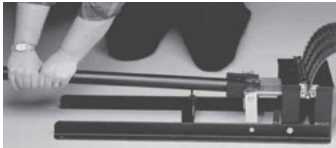
A manual, lever-action baler belt lacer specially designed for lacing round hay baler belts in the shop or the field. Installs perfect belt splices in hay baler belts every time. Designed to create an optimal hook clinch for long lasting splices that withstand the tugging, scraping, and high abuse situations typical of round hay baler belts. 10" wide.

Apache P/N	Description	P.I.W.
25069770	Belt Cutter 14" (350mm)	25.90#

Portable tool cuts belts up to 14" wide, quickly and easily. Table support features a built-in square to ensure proper cut. Belts can be also cut in the middle of the roll by opening the end of the cutter. Cuts belts up to 3/8" (9.5mm) thick. Includes a belt-squaring arm that makes consistently straight cuts, time after time.

BALER BELT LACING

Apache P/N	Description	Wt. Ea.	Apache P/N	Description	Wt. Ea.
25085381	Alligator® Rivet Lace/Pre-Cut	1.00#	25047058	#4.5 Belt Lace/Pre-Cut 7" Card	0.36#
25047057	#3 Belt Lace/Pre-Cut 4" Card	0.30#	25092005	#3 Belt Lace/72" Bulk	1.00#
25047056	#3 Belt Lace/Pre-Cut 7" Card	0.27#	25092016	#4.5 Belt Lace/72" Bulk	1.00#



AGRICULTURAL BELTING, ACCESSORIES AND SERVICES CONTINUED



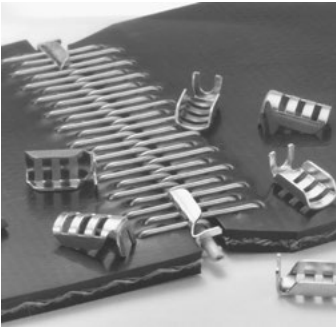
CONNECTING PINS & ACCESSORIES

Apache P/N	Description	Wt. Ea.
25051009	#13 (3/32) Nylon Covered Cable	0.017#
Nylon covering reduces corrosion and simplifies hinge pin insertion.		
25051007	#12 (7/64) Nylon Covered Cable	0.21#
Nylon covering reduces corrosion and simplifies hinge pin insertion.		
97250050	Nylon Covered Cable Connecting Pin	0.05#
25009050	Nylon-Steel Connecting Pin	0.07#
25085402	Alligator® Rivet Connecting Pin	0.24#
25085390	Alligator® Rivets	0.11#



Apache P/N	Description	Wt. Ea.
25050705	Belt Skiver Hand Tool	0.250#

Portable, lightweight, and easy to carry, the FSK™ Belt Skiver adjusts easily to the precise cutting depth you need. The FSK Belt Skiver is compact, so it is easy to use anywhere on the job site – even in cramped operating environments. For use on rubber-covered belts with top covers of 3/16" (4.5 mm) or more. Provides skives from 1/16" (1.5 mm) to 3/8" (10 mm) deep in a single pass. Deeper skives can be achieved with multiple passes. Can be used on most worn or damaged belt surfaces.



Apache P/N	Description	Wt. Ea.
25050698	Smart Lock™ Package	2.00#

Helps prevent common baler belt problems by protecting splices against belt edge wear. Increases end hook/pin life, and can add up to 50% more splice life. Kit contains 20 SmartLocks and 5' of cable pin.



**Contact Apache Customer Service for more information on
Baler Belting displays or for a special order catalog
CALL 1-800-459-8423 or go to www.apache-inc.com/balerprogram**



Standard Terms

1/2% - 10 Days; Net 30 Days

Product Ordering Info

When ordering please specify the Apache part number, quantity, description, and your quoted cost, this will insure the correct items will be shipped to you promptly.

Freight

See the current Ag Catalog price pages for freight terms. Apache reserves the right to specify freight carriers on prepaid shipments.

Warranty

All merchandise manufactured or assembled by Apache is warranted at the time of shipment to be free from defects in material and manufacturing (provided such merchandise is properly installed and used only for the intended purpose and under normal service conditions). Liability with respect to any such merchandise proven defective, is limited to buyer's net purchase price or (at Apache's discretion) to the repair or replacement thereof upon its return to Apache, freight prepaid. In no event shall Apache be liable to supply or pay for labor, downtime, or any loss or damage, either direct, incidental, or consequential. All merchandise supplied by Apache but designed, manufactured and assembled by others shall be accepted by Buyer with only those warranties made by such vendors or manufacturers and in lieu of any additional warranties on the part of Apache. This warranty is expressly made in lieu of any and all other warranties, including the warranty of merchantability and fitness for a particular purpose.

Return Materials

Any customer seeking to return material(s), for any reason, must first secure permission from an authorized customer service representative. A Return Material(s) Authorization number (RMA) will be issued. This number must appear on the material, packing list, and bill of lading so the Receiving Clerk can verify authorization for return. Absence of an RMA number shall constitute the right to refuse shipment.

DUE TO CONTINUAL PRODUCT IMPROVEMENT, APACHE RESERVES THE RIGHT TO ALTER SPECS AND PRICES WITHOUT PRIOR NOTICE.

For complete terms and conditions of sale criteria please visit:

www.apache-inc.com/aboutus/policyinfo.htm#terms





Our expert customer service personnel are available toll free to help recommend belt, belt fabrications, hose, and hose assemblies for your particular requirements. Whether it be belting or hose, we represent a wide variety of vendors who specialize in manufacturing quality goods.

Call us and let us work for you.



www.apache-inc.com

CORPORATE HEADQUARTERS

ISO 9001:2008 CERTIFIED

CEDAR RAPIDS, IA

Phone: 319-365-0471
Toll Free: 800-332-3243
Fax: 319-365-2522

NATIONAL SALES GROUP

Phone: 319-365-0471
Toll Free: 800-553-5455
Fax: 319-365-2522

CONSUMER PRODUCTS DIVISION

Phone: 319-365-0471
Toll Free: 800-459-8423
Fax: 319-365-6714

100% EMPLOYEE OWNED



99002323 / AP3 / rev113012

PROUD MEMBER OF:

