

AERVOE INDUSTRIES

Catalog 1
2021



Industrial, Maintenance and Construction Chemical Products





**CORPORATE OFFICES AND
MANUFACTURING FACILITY IN
GARDNERVILLE, NV.**



Company Profile — AerVOE Industries is a leading manufacturer of paints, specialty coatings, cleaners, lubricants, and MRO chemicals for industrial use. With a 50-year track record packaging all types of formulations and containers, we are committed to quality chemical packaging and the proper representation, use, and design safety of all products under the AerVOE brand name. Production capacity, quality control, product development, and management experience combined with our operating philosophy helps keep our customers ahead of the competition.

In 2012 we began our USA electronic manufacturing operation for 10 products that were previously manufactured by our partner factories in China. We are proud to make this investment in the future, which we feel will bring growth to our local community and beyond as MADE IN USA!

One company with the power of multiple brands. AerVOE Industries is now a leader in providing professional products to the MRO distribution chain.

Mission Statement — “Our customers shall expect and receive products that have consistent quality, reliable performance, and be cost-effective. Product formulas, raw materials, and package forms shall be selected to provide the proper “tool” for the trade professional to do the job right the first time.”

- As a manufacturer we are committed to the highest ethical standards in customer relations
- A documented price policy that ensures mutual profitability and a long-term partnership with our distributors based on integrity
- Field sales support based on knowledge and training provided by salaried and dedicated sales representatives
- Operations conducted with maximum responsiveness, efficiency, and focused to the customers’ needs
- Product development and improvements that define AerVOE as an innovator
- Providing leadership in user product safety and regulatory compliance while maintaining exceptional environmental standards
- Operating a purchasing program that assures the most reliable supply standards
- Maintaining exceptional facility housekeeping, safety, and environmental standards
- Conducting employee communications based on pride and respect

These efforts shall yield a knowledgeable and responsive sales force, consistent deliveries of profitable products that meet the toughest environmental standards, and the strength to grow and diversify, maintaining an edge for our customers within our market base.

Customer Service — AerVOE’s experienced, friendly Customer Service Representatives are assigned specific account responsibility to assure consistent, personalized service. Expedient response to orders allows us to consistently maintain one of the best shipping response times in the industry. Close teamwork among Customer Service, Accounting, and other administrative personnel enable the company to maintain the efficiency and responsiveness vital to our customer-oriented business.

Product Management — Product specialists are available to answer performance questions from basic application to complicated formulative issues. These individuals can assist in competitive evaluation problems based on direct experience with product testing protocol. In special situations, product and/or technical management personnel are available for field site visits to assist in problem solving.

Quality Assurance — AerVOE Industries manufactures and packages its own products. We take a direct, one-on-one approach to quality control with a staff of highly trained and qualified full time employees. In-house lab equipment includes computer color matching, accelerated shelf life testing, gas chromatograph analysis and much more.

Environment — AerVOE is the leader in providing quality products that meet the strictest environmental standards as set forth by the EPA, California’s CARB, European Union’s REACH program, and others. We are dedicated to eliminating greenhouse gases and carcinogens from products; and using materials that are produced in the same manner. Toluene and Xylene have been eliminated as a solvent in our product formulations. All aerosol cans are 100% recyclable and create fewer emissions in their manufacturing process. Packaging materials for all products have been reduced (plastic and cardboard) and selected for their recyclable properties. Our state-of-the-art facility meets or exceeds all regulatory, environmental, and safety standards. Jointly, our regulatory department and chemists work to stay ahead of all new regulation so we continue to produce quality, environmentally friendly products and expand water-based “green” product options.



TABLE OF CONTENTS

Paints and Coatings 4
 Choice of colors in cost effective solutions for indoor and outdoor applications.

Custom Color Matches..... 14

Galvanized and Stainless Steel Coatings ... 15
 Paints that provide the ultimate in protection against rust and corrosion as a primer or final coat.

Marking Products..... 19
 A complete line of inverted marking and coating paints and applicators.

Striping Paint and Applicators 24
 Specialty products for striping safety aisles and parking lots with crisp, long-lasting lines.

M.R.O. Products 26
 Necessary cleaners, lubricants, and other protective coatings for Maintenance, Repair, Operations.

Mold Specialties..... 39
 High quality mold specialties and release agents for molding operations.

Fleet / Utility Service..... 44
 Outside plant maintenance products for utility and municipal applications.

Shipping Essentials..... 47
 Stencil and cover-up inks, and industrial-strength adhesives for shipping and receiving departments.

Miscellaneous 48

Delivery Systems 50
 Applicators that make the application of Aervoe products economical and effective.

Other Aervoe Markets 52

Merchandising 53
 Retail racks and counter shelves with header cards to display the entire Aervoe product line.

Trade References 54
 A succinct dictionary of industry terms and regulations can help you through the alphabetical clutter of purchasing.

Numerical and UPC Product Index..... 56
 Every Aervoe product and container has its own UPC number and they're all listed here.

Customer Support Services 59

User Guides

Aerosol Paints and Coatings..... 18

APWA One-Call..... 22

Lubricants, Greases and Penetrants..... 30

Anti-Seize 31

Cleaners / Degreasers 33

Cutting & Fabricating 37

Mold Releases 42

Fleet / Utility Service 44

PAINTS AND COATINGS

Aerove Paints and Coatings provide quality, cost-effective solutions for every application. Each product offers a wide choice of colors and is formulated for industrial and institutional applications. High gloss, high-hide formulas provide superior performance, both indoors and outdoors, and insure uniform coverage in one application. Rust Proof, Supreme Color Shield, and Engine Enamel lines include OSHA safety, HVAC, and selected O.E.M. touch up colors. An excellent line of specialty coatings is also available for unique surface applications.

SUPREME COLOR SHIELD™ PAINT

Aerove's Supreme Color Shield coating is designed to provide superior appearance and color retention under harsh environments.

- Fast drying. Dries to touch in 15 minutes; dries to handle in 30 minutes
- High gloss, full hide coverage in one coat, with or without a primer
- Durable finish will not crack, chip or peel
- Provides excellent interior and exterior durability
- Ideal for metal parts fabrication, finish coat, and maintenance
- Performs well at temperatures up to 300°F (149°C)
- Not recommended for immersion services

Uses: Steel, metal, aluminum, wood, structural steel, drums, storage tanks, bar joists, steel pipes and railings, racks, conveyors, machinery, equipment, metal doors, ladders, fencing, cabinets, and furniture.

CAN SIZE (NET)	WEIGHT	CASE PACK
20-ounce Aerosol (15 oz.)	8 lbs.	6 Cans

COLOR SELECTION

5001 Aluminum	5012 Safety Red	5020 Light Gray (ANSI-61)
5004 Safety Blue	5014 Sand*	5049 Meter Gray (ANSI-49)*
5006 Safety Green	5016 Flat Black	5050 Padmount Green
5008 Safety Yellow	5017 Black	
5010 Safety Orange	5019 White	

*Features Spray-Any-Way valve

MILD ENVIRONMENTS

Outdoor weathering, mild industrial fumes and normal humidity with mold and mildew conditions.

MODERATE ENVIRONMENTS

Frequent fumes and spills of mild chemicals, occasional product spills, occasional chemical cleaning. Intermittent high humidity, moisture, mold, and mildew conditions.

SEVERE ENVIRONMENTS

Frequent fumes and spills of strong chemicals (acids, alkalis, and solvents), high humidity and moisture conditions. Frequent product spills and frequent chemical cleaning.



GLOSS COMPARISON CHART



SPEED E-NAMEL™

A high quality, fast-dry paint product for today's fast-paced customers. Dries to touch in 15 minutes! Prevents rust. A smooth, professional finish every time! For best results, use with Zynolyte Multipurpose Primers.

- Quick drying
- Rust preventive
- Apply to many substrates from metal and wood to plastic
- Hard finish

Uses: Furniture, metal and wood railings, fences, bicycles, hobbies, crafts, plastic and metal garden accessories, cabinets, doors, patio items, wicker, tools, masonry, bulkheads, and thousands of other items.

CAN SIZE (NET)	WEIGHT	CASE PACK
16-ounce Aerosol (11 oz.)	7 lbs.	6 Cans

COLOR SELECTION

Z275 Semi-Gloss White	Z482 Almond
Z277 Semi-Gloss Black	Z487 Flat Black
Z297 Persimmon	Z489 Light Gray
Z298 Orange	Z506 Antique White
Z307 Acrylic Clear	Z516 Purple
Z317 Aluminum	Z517 Rich Red
Z357 Chocolate Brown	Z518 Pink
Z377 Flat White	Z519 Burgundy
Z387 Gloss Black	Z525 Kelly Green
Z397 Gloss White	Z813 Red
Z467 Lemon Yellow	
Z468 Medium Gray	METALLICS
Z469 Hunter Green	Z308 Silver
Z470 Bermuda Blue	Z407 Gold
Z471 Royal Blue	



ZYNOLYTE® EAGLE SPRAY PAINT

Quick drying, economical acrylic enamels that provide a tough, durable finish on most interior/exterior surfaces.

- Fast-drying, economical paints
- Can be used on a variety of surfaces, interior and exterior
- Ideal for most paint and touch up projects

Uses: Can be used on wood, metal, aluminum, wrought iron, hard plastic, drywall, etc.

CAN SIZE (NET)	WEIGHT	CASE PACK
16-ounce Aerosol (10 oz.)	12 lbs.	12 Cans

COLOR SELECTION

S180 Aluminum	S188 Flat White	S198 Malibu Blue
S182 Chocolate Brown	S190 Gloss Black	S202 Sherwood Green
S184 Fire Red	S191 Semi-Gloss Black	S205 Gray
S185 Orange	S192 Gloss White	S206 Clear
S186 Flat Black	S196 Lemon Yellow	



ZYNOLYTE® MULTIPURPOSE PRIMER

High quality, non-lifting primer coatings for use on surfaces where good adhesion is needed before top/finish coat.

- Fast-drying; dries to touch in 10 minutes
- Tough, sealing primer coat
- Provides adhesion to non-painted surfaces to achieve maximum cohesion of final top coat
- Enhances the quality of any finish
- Bonds extremely well to bare metal surfaces
- Prevents rust and corrosion
- Fills in grain and surface imperfections when used on wood; seals surface

Uses: Metal or wood surfaces, including machinery, railings, electrical motors, presses, shop equipment, shelving, compressors, generators, bicycles, appliances, ladders, furniture, cabinets and automotive body parts.

CAN SIZE (NET)	WEIGHT	CASE PACK
16-ounce Aerosol (11 oz.)	7 lbs.	6 Cans
Gallon Can	23 lbs.	2 Gallons
5-Gallon Pail	62 lbs.	1 Pail
55-Gallon Drum (50 gal.)	615 lbs.	1 Drum

COLOR SELECTION

Z8070 Dark Gray	Z8076 White
Z8072 Gray	Z8078 Black
Z8074 Red Oxide	

ZYNOLYTE® SANDABLE SPRAY PRIMER

Provides a smooth, rust-inhibitive base. This durable automotive primer is best for auto body and parts touch up, either sandable or non-sandable.

- Compatible with lacquers, acrylics, and enamels
- Superior sealing and filling properties for metal surfaces
- Use as primer and or finish coat
- Fast drying
- Lead-free
- 100% non-toxic when dry

Uses: Metal automotive bodies and parts.

CAN SIZE (NET)	WEIGHT	CASE PACK
16-ounce Aerosol (11 oz.)	6 lbs.	6 Cans

COLOR SELECTION

Z1704 Gray
Z1706 Red Oxide

ZYNOLYTE® HI-TEMP PAINT

Zynolyte Hi-Temp Paint is a flame and heat-resistant coating uniquely formulated to produce a lasting finish that is resistant to very high surface temperatures.

- Withstands temperatures up to 1200°F (649°C)
- Provides a fast drying, hard, durable finish
- Offers excellent rust and corrosion resistance as well as interior and exterior durability
- Designed for use on metal surfaces where excessive heat will cause regular paint to blister and crack
- Once cured, will not chip off, peel away, discolor or chalk

Uses: Engine manifolds, mufflers, incinerators, radiators, space heaters, barbecues and fireplaces, steam pipes, boilers, and furnaces.

CAN SIZE (NET)	WEIGHT	CASE PACK
16-ounce Aerosol (11 oz.)	7 lbs.	6 Cans

COLOR SELECTION

Z630 Aluminum
Z635 Black
Z642 Machinery Gray
Z645 White

ZYNOLYTE® SUPER METAL COATING

Zynolyte Super Metal paint is a decorative and durable finish that provides the look of brilliant polished metals.

- Brilliant metallic finish
- Dries to the touch in 5 minutes
- Full dry in 2 hours
- Hard, permanent finish

Uses: Crafts and other interior projects such as decorations, ornaments, frames, toys, lamps, furniture, and decorative accessories.

CAN SIZE (NET)	WEIGHT	CASE PACK
16-ounce Aerosol (11 oz.)	7 lbs.	6 Cans

COLOR SELECTION

Z160 Chrome
Z165 Copper
Z170 Gold



ZYNOLYTE® FLUORESCENT COATING

Zynolyte fluorescent coating is made up of fluorescent particles that deliver color four times brighter than other spray paints.

- Available in an assortment of bright Day-Glo colors
- Increase visibility by up to four times; apply over white base coat for optimum brightness
- Provides maximum visibility and safety; total "glo" effect is obtained under black lights
- Can be used for both interior or exterior applications
- Dries to touch in minutes, full cure in 24 hours

Uses: Metal, wood, concrete, steel bars, safety aisle marking, machinery, signs, posters, emergency and safety equipment, OSHA hazards, production equipment, hobby models, toys, bicycles, sleds, and fly fishing lures. Ideal for engineering and survey painting of wood, stakes, and trees.

CAN SIZE (NET)	WEIGHT	CASE PACK
16-ounce Aerosol (11 oz.)	7 lbs.	6 Cans

COLOR SELECTION

Z1416 Green
Z1417 Lemon Yellow
Z1418 Red
Z1419 Red-Orange
Z1420 Yellow-Orange
Z1421 Hot Pink
Z1422 Orange



ENGINE ENAMEL

This fast drying, heat resistant paint is specially formulated to keep engine surfaces from pitting and rusting while maintaining color and a performance gloss finish.

- Specially made for refinishing engines and transmissions
- Withstands temperatures up to 500°F (260°C)
- Fast drying alkyd enamels match O.E.M. standards
- Excellent adhesion prevents rust, pitting, peeling, and checking
- Oil and gasoline resistant
- Provides superior durability and fade resistance under a variety of harsh conditions

Uses: Cast metal engine blocks, transmissions, pipes, radiators, farm and marine equipment, and other automotive and industrial equipment exposed to high temperatures.

CAN SIZE (NET)

16-ounce Aerosol (12 oz.)

WEIGHT

7 lbs.

CASE PACK

6 Cans

COLOR SELECTION

510 Universal Clear	560 Ford Blue
511 Universal White	561 Chevrolet Blue
512 Flat Black	562 G.M. Blue
513 Satin Black	566 Ford-Merc. Blue
514 Gloss Black	568 Chrysler Blue
520 Chevrolet Orange	570 Universal Silver
530 Cadillac Gold	575 Dull Aluminum
540 Alpine Green	580 Cummins Beige
550 Ford Red	582 Cast Iron Gray
551 Ford Gray	583 Steel Blast Gray

CLEAR ACRYLIC COATINGS

Aervoe's clear acrylic coatings are made with non-yellowing, acrylic resins that provide superior finish retention over painted and non-painted surfaces.

- Forms a flexible, long-lasting coating
- Non-yellowing formula
- Superior gloss retention, both indoors and outdoors
- Clear film preserves and protects against rust, corrosion, and fading
- Fast lacquer dry; dries to touch in just 5 minutes
- Tough protective coating will not flake, chip or peel

Uses: Metal, motors, machine parts, tools, tool boxes, steel bars and railings, metal hoods, lamps, copper or brass bed frames and fixtures, conduit, ducts, artwork and drawings, and to seal chalk markings.

PROD # / CAN SIZE (NET)	WEIGHT	CASE PACK
117 Clear Acrylic, Gloss 16-ounce Aerosol (12 oz.)	14 lbs.	12 Cans
120 Clear Acrylic, Matte 16-ounce Aerosol (12 oz.)	14 lbs.	12 Cans
6004 Kleer Kote 20-ounce Aerosol (15 oz.)	16 lbs.	12 Cans



RUST PROOF ANY-WAY PAINT

A high quality industrial maintenance enamel coating formulated for light to moderate interior/exterior industrial exposures. This product offers lasting protection against corrosion, light abrasion, weathering, and mild chemical fumes.

- Adheres to any surface (even vinyl and plastic)
- Sprays in any direction
- VOC and MIR compliant
- High gloss, high-hide coverage that provides superior corrosion protection especially on metal surfaces
- Can be applied over sound rusted areas; however, loose flakes, dirt, grease, oils, and other surface contaminants or particles should be removed first with a wire brush or sandpaper
- Lead-free
- Primer is not required but recommended over bare steel

Uses: Non-galvanized metal, wood, hard plastic, and other common surfaces, including machinery, motors, tools, cabinets, toolboxes, steel bars and railings, pipelines, drums, conduit, ducts, furniture, electrical equipment. Ideal for marking hazard areas and color coding steel. Also effective on steel, concrete (masonry), and aluminum.

CAN SIZE (NET)	WEIGHT	CASE PACK
16-ounce Aerosol (12 oz.)	7 lbs.	6 Cans
Quart & Gallon sizes available. See pg. 9.		

COLOR SELECTION

157 J.D. Green	307 Safety White	342 Semi Flat Black
167 Caterpillar Yellow (OLD)	308 Brite Red	344 Satin Black
168 Caterpillar Yellow (NEW)	309 Aluminum	348 Meter Green
178 School Bus Yellow	312 Flat Black	349 Meter Gray (ANSI-49)
300 Safety Purple	313 Flat White	361 Light Gray (ANSI-61)
301 Safety Red	314 Brown	
302 Safety Yellow	317 Tan	METALLICS
303 Safety Blue	318 Light Blue	310 Silver (11 oz)
304 Safety Green	319 Royal Blue	311 Gold
305 Safety Orange	320 Forest Green	
306 Safety Black	333 Dark Gray (ANSI-33)	



HVAC Colors - Color designations are currently used by DuPont for its refrigerants. Although refrigerant manufacturers make a concerted effort to select colors to differentiate refrigerant types, color guidelines are not a substitute for reading cylinder labels and markings. Aervoe suggests the following refrigerant colors be used for coding.

Refrigerant	Marking Color	Aervoe Product
R502	Purple	300
R22	Light Green	304/3040/5006
R404A	Orange	305/1305/3050/5010
R409A	Tan	317/5014
R134A	Light Blue	318/5008

OSHA Colors - The Occupational Safety and Health Act (OSHA) stipulates that industrial plants provide color coded safety equipment and hazard areas. The following list identifies the OSHA-designated colors and their meaning.

Application	Application Color	Aervoe Product
Radiation hazard	OSHA Purple	300
Danger, stop, or location of fire protection equipment	OSHA Red	301 3010 5012
Caution and physical hazards	OSHA Yellow	302 3020 5008
Equipment being repaired. Caution against starting or moving	OSHA Blue	303 3030 5004
Location of safety equipment other than fire	OSHA Green	304 3040 5006
Dangerous parts of machinery or energized equipment	OSHA Orange	305 3050 5010
Traffic and housekeeping	OSHA Black	306 3060 5017
Traffic and housekeeping	OSHA White	307 3070 5019

NOTE: OSHA and HVAC colors apply to both aerosol Rust Proof Paint, and bulk Direct To Metal (DTM) Paint.

DIRECT TO METAL RUST PROOFING PAINT Solvent- or Water-Based

AerVOE's high-performance Direct To Metal (DTM) solvent-based and water-based formulations withstand corrosion and exposure from mild to moderate conditions while maintaining high gloss levels. Color selections include **OSHA** safety, **HVAC**, commercial and selected factory equipment touch up colors.

- High gloss, high solids formula
- Ideal for equipment touch up and OEM production applications indoors or outdoors
- Resistant to mild and moderate environments including intermittent exposure to water, salt spray, moisture and temperatures up to 300°F (149°C)
- Can be applied directly over sound rust areas
- Tough, protective coating will not chip or peel
- Provides excellent hiding characteristics with smooth, even coverage
- Water-Based DTM may be used as a top coat on galvanized surfaces*
- Solvent-Based DTM is unacceptable as a top coat over galvanized surfaces*
- Not recommended for immersion services

Uses: Non-galvanized metal*, wood and other common surfaces, including machinery, motors, tools, cabinets, toolboxes, steel bars and railings, pipelines, drums, conduit, ducts, furniture, electrical equipment. Ideal for marking hazard areas and color coding steel.

SOLVENT-BASED COLOR SELECTION

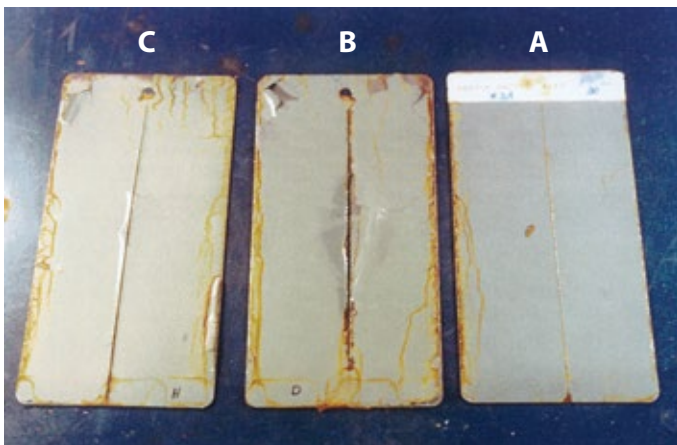
CAN SIZE (NET)	WEIGHT	CASE PACK
Quart Can	12 lbs.	4 Quarts
Gallon Can	23 lbs.	2 Gallons
5-Gallon Pail	49 lbs.	1 Pail
55-Gallon Drum (50 gal.)	478 lbs.	1 Drum

301 Safety Red	305 Safety Orange	312 Flat Black
302 Safety Yellow	306 Safety Black	349 Meter Gray (ANSI-49)
303 Safety Blue	307 Safety White	361 Light Gray (ANSI-61)
304 Safety Green	308 Brite Red	

WATER-BASED COLOR SELECTION

CAN SIZE (NET)	WEIGHT	CASE PACK
Gallon Can	23 lbs.	2 Gallons
5-Gallon Pail	52 lbs.	1 Pail
55-Gallon Drum (50 gal.)	508 lbs.	1 Drum

3010G Safety Red		
3020G Safety Yellow		



For other colors and custom colors in liquid packaging, see page 14 and refer to the Small Batch Bulk Paint Making program.

Scribed Q-panels below represent independent salt spray test results conducted by a national testing laboratory.

Product tested was AerVOE Industries Rust Proofing Water-based DTM Paint (panel A), and two other nationally-recognized brands (panel C = Brand H), and (panel B = Brand D). Results shown are after 96 hours of salt spray testing.

Salt spray testing according to ASTM B117 Test Method of Salt Spray (Fog) Testing.

ROOF ACCESSORY & TRIM PAINT

This specialty coating is formulated for exterior use on roofing accessories. Provides long term protection against rust, corrosion and discoloration on roofing accessory materials.

- Excellent adhesion to galvanized steel
- Provides a professional coating on surfaces where brush application may be difficult
- Excellent adhesion to all metal, plastic, vinyl, wood and masonry surfaces
- Resistant to water, snow, UV exposure and other harsh outdoor conditions
- Superior durability, color fastness, high-hide coverage
- Matched to O.E.M. color standards

Uses: Specifically designed for roof vents, flashing, valleys and other metal or plastic roofing accessories. Apply to metal, plastic, vinyl, wood, concrete and masonry.

CAN SIZE (NET)	WEIGHT	CASE PACK
16-ounce Aerosol (12 oz.)	14 lbs.	12 Cans

COLOR SELECTION

Composition Shingles

1601 Cedar	1607 Smoke
1603 Rustic Brown	1608 Slate Gray
1604 Driftwood	1609 Rustic Black
1606 Birchwood	1612 Dark Brown

Ceramic Tile

1613 Terra Cotta
1616 Adobe

Metal Roof

1625 Bone White
1626 Sierra Tan

ANODIZED METAL & TRIM PAINT

Anodized Metal & Trim Paint is a fast drying, specialty pigmented coating that is used for the touch up and installation of anodized and painted building components. This product is available in 4 of the most commonly used OEM colors. Durable color fastness, good hide and coverage. This product provides long-term protection against rust, corrosion, and discoloration of aluminum and metal materials.

- Excellent adhesion to all metal, wood, and masonry surfaces
- Exceptional resistance to water, sun (UV rays), snow, and other harsh environmental conditions
- Superior durability, while extending the life of all materials coated

Uses: Window and door frames, railings, gutters and other metal trim. Also excellent for the touch up and installation of storefronts, fascia, and curtain walls.

CAN SIZE (NET)	WEIGHT	CASE PACK
16-ounce Aerosol (12 oz.)	13 lbs.	12 Cans

COLOR SELECTION

1850 California Black Bronze
1852 Dark Bronze
1857 Bronze

RUBBERIZED LEAK REPAIR

A flexible rubber coating that dries quick to seal water leaks and cracks. It penetrates deep into the surface to assure a firm, tough bond. It has excellent adhesion to concrete, wood, felt, gypsum, plastic, glass and metal.

- Rust and corrosion inhibiting formula
- Fills surface pores
- Withstands normal hydrostatic pressure

Uses: Use on metal edging and flashing (including galvanized), gutters (PVC, metal or galvanized), roofing (composition and metal), windows, planters, and other metal, wood, concrete, masonry or gypsum surfaces.

CAN SIZE (NET)	WEIGHT	CASE PACK
See color selection	18 lbs.	12 Cans

COLOR SELECTION

1801 White (15 oz.)	1805 Black (17 oz.)
1802 Clear (15 oz.)	1806 Aluminum (17 oz.)



1690 BLACK ASPHALT ROOF PRIMER

Asphalt Roof Primer is a quick drying, asphalt-based material designed for priming surfaces prior to application of hot-mopped or cold-applied asphalt coatings, roof cements, and asphalt-based roof and flooring adhesives. High penetrating qualities help assure a firm, tough bond.

- Excellent adhesion to concrete, wood, felt, gypsum, plastic, glass, and metal
- Forms a tough waterproof seal that will trap and encapsulate dust and other loose particles
- Creeps into cracks and crevices, then sets up and bonds to surfaces
- Provides rust proofing while filling surface pores
- Each application provides a smooth, even, protective film

Uses: Specially designed for metal edging and flashings, weathered (composition) roofing, concrete and masonry surfaces, and gypsum surfaces.

CAN SIZE (NET)	WEIGHT	CASE PACK
20-ounce Aerosol (15 oz.)	17 lbs.	12 Cans



MILITARY VEHICLE & RECREATION CAMO PAINT

A durable, high-hide acrylic enamel that offers the unique visual characteristics of true camouflage cover if blended in U.S. military color patterns.

- Dries to tough, hard finish, resists corrosion & abrasion
- Will not chip or peel under harsh conditions
- Performs at temperatures up to 300°F (149°C)
- Designed to U.S. Military Designated Field Coloring standards and 595 Federal Color Specifications
- Not recommended for immersion services

Uses: Ideal for military vehicle restoration, and duck blinds. Apply to metal or wood surfaces as top or final coat where an earth-toned finish is desired.

CAN SIZE (NET)	WEIGHT	CASE PACK
16-ounce Aerosol (12 oz.)	7 lbs.	6 Cans

COLOR SELECTION

951 Light Green (34151)	988 Black (37038)
952 Dark Green (34102)	990 Woodland Green (34094)
957 Earth Yellow (30257)	992 Marine Corps Green (34052)
968 Field Drab (30118)	997A Olive Drab Semi-gloss (24087)
977 Sand (30277)	999 Earth Brown (30099)
979 Forest Green (34079)	1076 Coyote (476/498)
987A Olive Drab (34087)	1082 Desert Sand (500/503)
987B Olive Drab (34088)	1084 Foliage Green (502/504)



156 REBAR GREEN EPOXY COATING

A high performance, single system epoxy coating specifically designed to protect rebar from corrosion and other damage. Use to touch up and repair the original factory coating or bare rebar. May also be used on other approved steel surfaces.

- Meets ASTM D3963 and D3963M-01 specifications
- Prevents rust, corrosion, and the resulting stains when applied to rebar before setting in concrete
- Fast drying, durable finish
- Excellent color retention
- Adheres to all surfaces with very good resistance to corrosion, chemicals, gasoline, and abrasion
- Prevents oxidation with touch up of sheared ends, cuts and other exposed areas
- Performs at temperatures up to 300°F (149°C)

Uses: Rebar, metal, steel, and metal support reinforcement beams.

CAN SIZE (NET)	WEIGHT	CASE PACK
16-ounce Aerosol (12 oz.)	14 lbs.	12 Cans



MINE MARKING PAINT

Aervoe's upright marking paint is a highly pigmented, durable paint designed specifically for overhead marking.

- Sprays upright with or without cap on.
- May be applied by hand or in Aervoe's #244 Spot Marker or #245 Marking Stick
- Does not contain ozone depleting substances, lead, CFCs, chromates or chlorinated solvents
- Low flash, low odor
- Mark is water resistant after dry
- Non-clogging; contents empty completely
- Fast drying, highly visible colors

Uses: Overhead marking in mines, on bridges, building construction or any application requiring overhead marking.

CAN SIZE (NET)	WEIGHT	CASE PACK
20-ounce Aerosol (17 oz.)	18 lbs.	12 Can

COLOR SELECTION

195 Fl. Red-Orange	197 Fl. Orange
196 Fl. Red	



WET COAT® TREE MARKING PAINT

- For use in wet and/or during rainy conditions
- Mixes with the water from wet wood allowing paint to penetrate deep into pores of lumber
- Displaces moisture while the film is formed to penetrate and adhere to the surface
- Remaining mark is highly visible and will withstand subsequent and continued immersion in water
- Provides long lasting identification on natural bark or cut lumber
- Includes a red tip for wet conditions and a white tip for dry conditions

Uses: In either wet or dry conditions, apply directly to bark, trees, cut wood, railroad ties, logs, pulpwood and finished lumber for grade and select cut marking.

CAN SIZE (NET)	WEIGHT	CASE PACK
16-ounce Aerosol (12 oz.)	13 lbs.	12 Cans

COLOR SELECTION

694 White	697 Red
695 Blue	698 Orange

TREE MARKING PAINT

Specially formulated, long lasting, lead-free solvent-based paints that meet all marking requirements of the forestry industry. Tracer element available for government agencies on special order basis.

- Regular and fluorescent colors available
- Does not contain lead, Toluene, or Methylene Chloride
- Fast drying high solids formula
- Excellent for horizontal numbering, lettering or writing
- Excellent adhesion and visibility
- Ideal for inventory and lumber identification marking of cut wood, trees, logs, railroad ties, pulpwood, and finished lumber
- Heavily pigmented to provide bright visual identification at distances

Uses: Mark cut wood, trees, logs, railroad ties, pulpwood and finished lumber for grade and select cut marking.

CAN SIZE (NET)	WEIGHT	CASE PACK
16-ounce Aerosol (12 oz.)	13 lbs.	12 Cans

COLOR SELECTION

610 Red	650 Blue	690 Fl. Red
620 Orange	660 Black	691 Fl. Pink
630 Yellow	670 White	692 Fl. Orange-Red
645 Dark Green	688 Fl. Green	



6309 LOG END SEALER

Pliable wax sealer that will minimize moisture loss from cut log ends.

- Limits end checking and bark splitting on cut wood to reduce loss
- Helps prevent mold and mildew from forming inside wood
- Protection up to 3 years
- Stable non-toxic, non-hazardous wax and water emulsion

CAN SIZE (NET)	WEIGHT	CASE PACK
16-ounce Aerosol (12 oz.)	7 lbs.	6 Cans
Gallon Can	19 lbs.	2 Cans





PROFESSIONAL CHOICE FOREST BOUNDARY MARKING PAINT

Mark forest or property boundaries with this durable and long lasting tree marking paint. The wide fan spray deposits up to an 8"-wide band in either a vertical or horizontal mark.

- Adjustable fan spray produces up to an 8"-wide spray pattern
- Up to 8-year durability and visibility
- High yield – up to 30% more
- Adheres to wet surfaces
- Weatherproof
- Fast drying

Uses: Boundary marking of forest or other property lines.

CAN SIZE (NET)	WEIGHT	CASE PACK
20-ounce Aerosol (15 oz.)	16 lbs.	12 Cans
Quart Can	27 lbs.	12 Cans
Gallon Can	23 lbs.	2 Cans

COLOR SELECTION

5310 Red	5355 Dark Blue
5320 Orange	5380 Purple
5330 Yellow	

PROFESSIONAL CHOICE TREE MARKING PAINT

Superior coverage and adhesion when marking trees or cut wood. Has excellent wet surface adhesion, and sprays in any direction.

- 360° application
- High yield – up to 30% more
- Fast drying and weatherproof
- Excellent writing control

Uses: Marking on trees, cut wood, logs, railroad ties, pulpwood, and finished lumber.

CAN SIZE (NET)	WEIGHT	CASE PACK
20-ounce Aerosol (15 oz.)	16 lbs.	12 Cans

COLOR SELECTION

6310 Red	6355 Dark Blue	6493 Fl. Yellow
6320 Orange	6370 White	6495 Fl. Blue
6330 Yellow	6490 Fl. Red	6498 Fl. Green
6350 Light Blue	6492 Fl. Orange	

CAN SIZE (NET)	WEIGHT	CASE PACK
Quart Can	27 lbs.	12 Cans
Gallon Can	23 lbs.	2 Cans

COLOR SELECTION

Above colors, plus:		
6340 Green	6360 Black	6491 Fl. Pink
6345 Dark Green	6380 Purple	

6301 DUZ ALL SPRAY GUN

Metal spray gun that attaches to Professional Choice Tree Marking and Forest Boundary Paint quart cans.

WEIGHT	CASE PACK
2 lbs.	1

240 SPRAY CAN POUCH

Nylon pouch holds 1 20-oz. aerosol can. A belt slips through a nylon strap for easy access.

WEIGHT	CASE PACK
1 lb.	1



243 TREE MARKING PAINT QUART CAN POUCH

Nylon pouch holds 1 quart can with Duz-All Spray Gun attached. A belt slips through a nylon strap for easy access.

WEIGHT	CASE PACK
1 lb.	1



Shown with Duz All Spray Gun



Meet your customer's needs for custom color matching so they can do their job.



- **Farm Equipment Touch Up**
- **Automotive Finishes**
- **Public Works Maintenance**
- **Original Equipment Color Matches**
- **Metal Corrosion and Electrical Insulation**

Small batch aerosol fills start with 2400 cans or 100 gallons per color.

1. We color match to your specification and supply all materials and labor.

– OR –

2. You supply the concentrate and we provide the filling service and all packaging components.

AerVOE supplies a generic label imprinted with your name, color, and part number. Customer may provide custom film labels.



For full program details, contact Customer Service at 800-227-0196.

GALVANIZED AND STEEL COATINGS

Aerove galvanize coatings and stainless steel paints provide the ultimate in long term protection against rust and corrosion available today. They are acceptable as a coating in federally inspected meat and poultry plants for application to structural surfaces, or any surface where incidental food contact may occur. Crown galvanize coatings have been the industry benchmark for over 50 years... products that "sacrifice" the coating to chemically protect steel.

PREMIUM GALVANIZE COATINGS

7007 COLD GALVANIZE COATING 93% ZINC RICH

The leader in the industry in corrosion prevention. Can be easily sprayed, brushed, or dipped onto any metal surface. Its zinc-rich formula is designed for permanent protection.

- 93% pure zinc in dry film
- Meets performance requirements of MIL-P-46105(MR), MIL-P-21035B, and DOD-P-21035A
- Withstands 2000 hours of 5% salt spray testing (ASTM B-117)
- Light gray, matte finish
- Zinc sacrifices itself to protect the base metal surface
- Provides protection equal to or better than hot-dipped galvanizing
- Outstanding weld-through primer

Uses: Industrial type applications such as aviation, marine, manufacturing, etc.

CAN SIZE (NET)	WEIGHT	CASE PACK
16-oz. Aerosol (13 oz.)	14 lbs.	12 Cans
Quart Can	26 lbs.	4 Quarts
Gallon Can	25 lbs.	1 Gallon

7008 BRITE GALVANIZE COATING 65% ZINC RICH

A restorative coating fortified with zinc for preventing rust and corrosion on ferrous metal surfaces with one coat application.

- A glistening coating with 65% pure zinc in dry film
- Stops rust and corrosion on any iron or steel surface for protection equal to or better than hot-dipped galvanizing
- Restores galvanized surfaces to the bright look of hot-dipped galvanizing
- Meets performance requirements of ASTM A-780-93A
- Withstands 500 hours 5% salt spray (ASTM B-117)

Uses: Repair of welds, handrails, rims, guardrails, metal chain fences, pipes, corrugated metal buildings, or anywhere the bright look of hot-dipped surfaces is desired.

CAN SIZE (NET)	WEIGHT	CASE PACK
16-oz. Aerosol (13 oz.)	14 lbs.	12 Cans
Quart Can	13 lbs.	4 Quarts
Gallon Can	13 lbs.	1 Gallon



LOW VOC FORMULAS MEET CALIFORNIA, CONNECTICUT AND OTHER STATE REQUIREMENTS.

7007VG LOW VOC COLD GALVANIZE COATING 93% ZINC RICH

A low VOC version of our Cold Galvanize Coating with a VOC content of less than 100 g/l. An exceptionally smooth flowing, high-solids compound that provides a fast drying coating to protect ferrous metals in highly corrosive environments. Zinc fuses to metal substrates for protection equal to or better than hot-dipped galvanizing. The sacrificial anodization causes the zinc to sacrifice itself for the base metal's protection. Stops rust and corrosion on any steel or iron surface.

- Contains 97% pure zinc
- Yields 93% zinc in a dry film
- Meets multiple performance requirements of ASTM, MIL, and DOD specifications (see product data sheet for details)
- Performs at temperatures up to 150°F (65°C)
- Withstands up to 2,000 hours salt spray exposure

Uses: Use on damaged galvanized surfaces, structural steel, automobiles, guardrails, bridges, TV and radio towers, welded joints, storage tanks, signs and signposts, equipment, gutters, pipelines, transformers, and corrugated metal buildings.

CAN SIZE (NET)
Gallon Can

WEIGHT
20 lbs.

CASE PACK
1 Gallon

7008VG LOW VOC BRITE GALVANIZE 65% ZINC RICH

A low VOC version of our Brite Galvanize Coating with a VOC content of less than 250 g/l. Provides a restorative coating fortified with zinc for preventing rust and corrosion on ferrous metal surfaces.

- A glistening coating with 65% pure zinc in dry film
- Stops rust and corrosion on any iron or steel surface for protection equal to or better than hot-dipped galvanizing
- Restores galvanized surfaces to the bright look of hot-dipped galvanizing
- Meets performance requirements of ASTM A-780-93A
- Withstands 500 hours 5% salt spray (ASTM B-117)

Uses: Repair of welds, handrails, rims, guardrails, metal chain fences, pipes, corrugated metal buildings, or anywhere the bright look of hot-dipped surfaces is desired.

CAN SIZE (NET)
Gallon Can

WEIGHT
20 lbs.

CASE PACK
1 Gallon

For 30 years...

The industry standard for manufacturing quality and performance reliability.





MRO/INDUSTRIAL GALVANIZE COATINGS

187 MRO COLD GALVANIZE COATING

This MRO Cold Galvanize Coating is a cost effective zinc spray coating that imparts temporary zinc protection in the weld-through process from fabrication, to maintenance, and repair. Even at one coat, interim protection is provided if the surface is scratched or broken, an electrochemical reaction (sacrificial anodization) causes the zinc to sacrifice itself for the base metal's protection.

- 97% pure metallic zinc dust with 93% zinc in dry film
- Acts as metallic primer and can be final protective coating at 1 - 2 mil thickness
- If moisture is present, zinc will corrode but it will continue to protect the metal surface
- An economical coating for preventive maintenance on galvanized parts and with multiple coats for longer-term protection
- Meets multiple ASTM and MIL specifications (see product data sheet for details)
- Acceptable as a coating in federally inspected meat and poultry plants for application to structural surfaces where there is a possibility of incidental food contact

Uses: This hard coating acts as a metallic primer for iron, steel, and their welds to provide interim protection during the work process. Use on weld points, damaged galvanized surfaces, structural steel, automobiles, guard rails, bridges, TV and radio towers, storage tanks, signs and sign posts, equipment, gutters, pipelines, transformers, and corrugated metal buildings.

CAN SIZE (NET)

16-oz. Aerosol (12 oz.)

WEIGHT

13 lbs.

CASE PACK

12 Cans

188 MRO BRITE GALVANIZE COATING

Brite Galvanize Coating is an effective way to repair hot-dip galvanizing that has been damaged by abrasion, scratching, cutting or welding. Cosmetically repairs both ferrous and non-ferrous surfaces with one coat interim protection or multiple coats for longer-term protection.

- 97% pure zinc metallic flake with 65% zinc in dry film
- Zinc fuses to metal substrate
- Restores surfaces to the bright look of hot-dip
- Stops rust and corrosion on any iron or steel surface
- Will continue to protect against corrosion even if scratched
- Does not contain lead, chromates, methylene chloride or fluorocarbons
- Meets performance requirements of ASTM A780-01
- Acceptable as a coating in federally inspected meat and poultry plants for application to structural surfaces where there is a possibility of incidental food contact

Uses: Use on pipes, heavy equipment, highway guard rails, hand rails, welds, metal chain fences, bridges, storage tanks, corrugated metal buildings, transformers, television towers, signs and sign posts, railroad equipment, construction equipment, and anywhere the bright look of hot-dipped surfaces is desired.

CAN SIZE (NET)

16-oz. Aerosol (12 oz.)

WEIGHT

13 lbs.

CASE PACK

12 Cans



143 MRO CHROME GALVANIZE COATING

A reflective, chrome coating that provides the benefits of zinc flake and the properties of chrome.

- Convenient application when hot-dip repair is necessary
- Fast drying; dries to touch in 10 minutes
- Restores galvanized surfaces to a bright chrome finish
- For best corrosion protection use as top coat over 147 or 148, when chrome look is desired

Uses: On pipes, heavy equipment, highway guardrails, handrails, bridges, metal fences, storage tanks, metal buildings, transformers, television towers, signs and sign posts, railroad equipment, and over welds, or anywhere a chrome finish is desired.

CAN SIZE (NET)

16-ounce Aerosol (12 oz.)

WEIGHT

14 lbs.

CASE PACK

12 Cans

145 STEEL RENEW

Steel Renew Stainless Steel Coating provides optimum resistance to weather, abrasion and corrosion. Protects metal, chrome, ceramic and copper surfaces.

- Contains 100% 316L stainless steel pigment
- Performs at temperatures up to 350°F (177°C)
- USDA acceptable where incidental food contact may occur
- Creates a hard finish that is ideal for metal parts, equipment, and machinery
- Withstands high-pressure washdowns
- Resistant to UV, chemicals, oils, alkalis, food acids, and water

Uses: Structural steel, food processing and packaging equipment, metal parts, industrial equipment, tools, trailers, tanks, towers.

CAN SIZE (NET)

16-ounce Aerosol (13 oz.)

WEIGHT

14 lbs.

CASE PACK

12 Cans

AEROSOL PAINTS, GALVANIZING, AND STEEL COATINGS USER GUIDE

AEROSOL PAINT, GALVANIZING AND STEEL COATING USER GUIDE											
AERVOE PRODUCT	BASE MATERIALS	INTERIOR DURABILITY	EXTERIOR DURABILITY	RECOAT WINDOW	DRY TIME TO TOUCH	FULL CURE	CORROSION RESISTANCE	GLOSS	GASOLINE RESISTANCE	MOTOR OIL RESISTANCE	MIR CONTENT
Supreme Color Shield Paint	Acrylic Modified Alkyd	Excellent	Excellent	Before 2 hrs. or after 72 hrs.	15 min.	72 hrs.	Very good alone; excellent with primer	High	Poor	Good	*A
Speed E-Name	Acrylic VT Alkyd	Excellent	Excellent	Before 2 hrs. or after 72 hrs.	15 min.	72 hrs.	Very good alone; excellent with primer	High	Poor	Good	*A
Eagle Spray Paint	Acrylic VT Alkyd	Excellent	Excellent		15 min.	72 hrs.	Good alone; excellent with primer	High	Poor	Good	*A
Rust Proof Any-Way Spray Paint	Acrylic Alkyd Enamel	Excellent	Excellent	Before 2 hrs. or after 72 hrs.	15 min.	72 hrs.	Very good alone; excellent with primer	High	Poor	Good	*A
Engine Paint	Short Oil Alkyd	Excellent	Excellent	Before 3 hrs. or after 72 hrs.	15 min.	72 hrs.	Good alone; excellent with primer	High	Good	Very good	*A
Multipurpose Primer	Phenolic Alkyd Enamel	Excellent	Good	Anytime	10 min.	24 hrs.	Good	Low	Fair	Good	0.8
Sandable Spray Primer	Acrylic	Excellent	Excellent	Anytime	10 min.	24 hrs.	N/A	Flat	Fair	Good	0.8
Clear Acrylic Coatings Gloss / Kleer Kote / Matte	Acrylic	Excellent	Excellent	Anytime	5 min.	24 hrs.	Very good	High/Flat	Poor	Good	0.85
Fluorescent Coating	Acrylic Modified VT Alkyd	Excellent	Good	Before 2 hrs. or after 72 hrs.	15 min.	24 hrs.	Very good alone; excellent with primer	High	Good	Very good	1.3
Hi-Temp Paint	Acrylic Silicone	Excellent	Excellent	Anytime	30 min.	After firing	Excellent alone	Low	Excellent	Excellent	1.85
Super Metal Paint	Polyterpene	Good	Fair	After 24 hrs.	15 min.	24 hrs.	Good	Metallic	Poor	Poor	1.25
Roof Accessory & Trim Paint	Acrylic	Excellent	Excellent	Anytime	5 min.	24 hrs.	Unknown	Flat	Poor	Excellent	0.8
Asphalt Roof Primer	Petroleum	N/A	Excellent	Anytime	3-4 hrs.	24 hrs.	N/A	N/A	N/A	N/A	0.7
Anodized Metal & Trim Paint	Short Oil Alkyd	Excellent	Excellent	Anytime	15 min.	72 hrs.	Very good	Flat	Good	Excellent	0.8
Mine Marking Paint	Acrylic VT Alkyd	Good	Fair	N/A	30 min.	8 hrs.	N/A	Flat	Poor	Fair	1.3
Rebar Green Coating	Epoxy/Acrylic Modified Alkyd	Excellent	Excellent	Before 2 hrs. or after 72 hrs.	15 min.	72 hrs.	Excellent	Medium	Good	Very good	0.95
Camouflage Paint	Uralkyd	Excellent	Excellent	Before 1 hr. or after 72 hrs.	15 min.	72 hrs.	Excellent alone	High/Flat	Excellent	Excellent	0.8
Tree Marking Paint	Regular (Fluorescent) Medium Alkyd	Excellent (Good)	Excellent (Fair)	N/A (N/A)	30 min. (30 min.)	24 hrs. (24 hrs.)	Not applicable (Not applicable)	Flat (Flat)	Excellent (Poor)	Excellent (Very good)	0.8 (1.3)
Wet Coat Tree Marking Paint	Acrylic	Excellent	Excellent	Anytime	10 min.	10 min.	Not applicable	Flat	Fair	Excellent	0.8
Professional Choice Tree Marking Paint (non-fluorescent)	Acrylic	Excellent	Excellent	Anytime	10 min.	20 hrs.	N/A	Flat	N/A	N/A	0.8
Professional Choice Tree Marking Paint (fluorescent)	Acrylic	Good	Fair	Anytime	10 min.	20 hrs.	N/A	Flat	N/A	N/A	1.3
Professional Choice Forest Boundary Marking Paint (non-fluorescent)	Acrylic	Excellent	Excellent	Anytime	10 min.	20 hrs.	N/A	Flat	N/A	N/A	0.8
Log End Sealer	Wax Emulsion	N/A	N/A	15-30 min.	90 min.	24 hrs.	N/A	Flat	N/A	N/A	0.8
143 MRO Chrome Galvanize Coating	Polyterpene	Good	Fair	Before 1 hr. or after 72 hrs.	10 min.	24 hrs.	Best over 187/188	Metallic	Poor	Good	1.25
187 MRO Cold Galvanize Coating	Acrylic	Excellent	Excellent	Before 1 hr. or after 72 hrs.	15 min.	24 hrs.	Good alone	Flat metallic	Poor	Good	1.25
188 MRO Brite Galvanize Coating	Acrylic	Excellent	Excellent	After 24 hrs.	10 min.	24 hrs.	Good alone	Metallic	Poor	Very good	1.25
7007 Cold Galvanize Coating	Acrylic	Excellent	Excellent	Before 1 hr. or after 72 hrs.	15 min.	24 hrs.	Excellent alone	Flat Metallic	Poor	Good	1.25
7008 Bright Galvanize Coating	Acrylic	Excellent	Excellent	After 24 hrs.	15 min.	24 hrs.	Excellent alone	Metallic	Poor	Very good	1.25
Steel Renew	Urethane Modified Alkyd	Excellent	Good	Before 2 hrs. or after 120 hrs.	15 min.	7 days	Excellent alone	Metallic	Excellent	Excellent	1.25

*A = Flat 0.8, Metallic 1.25, Non-Flat 0.95

MARKING PRODUCTS

INVERTED MARKING PAINTS

Aervoe Industries Incorporated offers the most complete line of inverted marking paints and marking coatings in the world. Choose from the wide range of application-specific aerosol and bulk marking products, including paints, chalk, and specialty marking products such as our patented Fade-Out Marker. The higher paint solids level that is an Aervoe standard means a more durable mark, and more linear feet per 3/4" mark with one-coat coverage. All inverted aerosol cans are activated by hand with the patented Spray-Thru Cap, or can be used with cap on or off in Aervoe #244 Spot Marker or #245 Marking Stick applicators.

SURVEY MARKING PAINT

Survey Marking Paint is a superior upside-down marking paint that is designed for survey marking. It provides the best quality paint in terms of color visibility, color retention, durability, and a lasting mark of up to six months.



CAN SIZE (NET)	WEIGHT	CASE PACK
20-oz. Aerosol (17 oz.)	18 lbs.	12 cans

COLOR SELECTION

Regular	
201 Red	208 Hi-Vis Yellow
202 Yellow	209 Light Blue
203 Blue	210 Silver (15 oz.)
204 Green	212 Purple
205 Orange	280 Concrete Gray
206 Black	281 H.D. Red
207 White	
Fluorescent	
220 Fl. Red	227 Fl. Blue
222 Fl. Orange	229 Fl. Pink
224 Fl. Green	230 Fl. Red-Orange
226 Fl. Yellow	288 H.D. Fl. Orange

H.D. = (High Delivery) 30% greater than other colors.

Note: Survey Marking Paint contains a non-freezing formula; operational to 14°F (-10°C).



CONSTRUCTION MARKING PAINT

Construction Marking Paint is the flagship of the line, offering a high quality paint that is priced competitively to meet a variety of marking applications while providing good color visibility and durability. Why pay for the added quality of Survey Marking Paint if the mark does not need to last as long? Great color durability up to three months.



CAN SIZE (NET)	WEIGHT	CASE PACK
20-oz. Aerosol (17 oz.)	18 lbs.	12 cans

COLOR SELECTION

Regular	
251 Black	257 Orange
252 Yellow	258 Hi-Vis Yellow
254 Blue	259 Green
255 White	260 Purple
256 Red	
Fluorescent	
246 Fl. Red	250 Fl. Blue
247 Fl. Orange	253 Fl. Yellow
248 Fl. Green	283 Fl. Red-Orange
249 Fl. Pink	

ALL PURPOSE MARKING PAINT

This all purpose paint is an economically priced marking paint that is designed to provide a very cost-effective approach to marking and still provide good visibility in the two-month range.

CAN SIZE (NET)	WEIGHT	CASE PACK
20-oz. Aerosol (15 oz.)	16 lbs.	12 cans

COLOR SELECTION

Regular	
1380 Black	1384 Green
1381 Red	1385 Orange
1382 Yellow	1387 White
1383 Blue	
Fluorescent	
1390 Fl. Red	1394 Fl. Blue
1391 Fl. Green	1395 Fl. Red-Orange
1392 Fl. Orange	1399 Fl. Pink
1393 Fl. Yellow	





WATER-BASED MARKING PAINT

This patented (#5,158,609), water-based formulation is made specifically for marking on turf surfaces. It will not damage or burn grass roots. Provides a mark that will last up to two months, but can be cut off after the grass has grown out.

CAN SIZE (NET)	WEIGHT	CASE PACK
20-oz. Aerosol (15 oz.)	17 lbs.	12 cans

COLOR SELECTION

- 290 Blue
- 291 White
- 292 Red
- 293 Yellow



INVERT-A-CAP®

The ultimate writing tool in inverted marking paint. Use where controlled applications (letters and numbers) are needed, in addition to lines. Best positive delivery cut-off and non-clogging performance with the least possible tip paint build-up.

CAN SIZE (NET)	WEIGHT	CASE PACK
16-oz. Aerosol (12 oz.)	14 lbs.	12 cans

COLOR SELECTION

- | | |
|------------|--------------------|
| 261 Red | 270 Fl. Red |
| 262 Yellow | 272 Fl. Orange |
| 263 Blue | 274 Fl. Green |
| 265 Orange | 275 Fl. Red-Orange |
| 267 White | 279 Fl. Pink |

LOCATOR'S CHOICE MARKING PAINT

This inverted marking paint is designed for the professional locators to create readable numbers and letters with a 3/4" width on a variety of hard surfaces. Not recommended for repeat applications on turf.

CAN SIZE (NET)	WEIGHT	CASE PACK
20-oz. Aerosol (15 oz.)	16 lbs.	12 cans

COLOR SELECTION

- 1451 Red
- 1452 Blue
- 1453 White
- 1454 Yellow
- 1455 Fl. Orange
- 1456 Fl. Pink



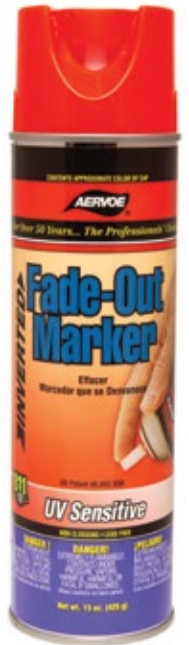
FADE-OUT MARKER

With another first in the industry, AerVOE brings a revolutionary, patented (#6,652,638) coating that is specially formulated to disappear with UV exposure. It is ideal for use in visually sensitive areas with the mark progressively fading from a vivid fluorescent to a clear film in 30 to 35 days.

CAN SIZE (NET)	WEIGHT	CASE PACK
20-oz. Aerosol (15 oz.)	16 lbs.	12 cans

COLOR SELECTION

- 1420 Fl. Red
- 1422 Fl. Orange



INVERTED SPECIALTY MARKING PAINTS / COATINGS



MARKING CHALK

Aervoe chalks are a special blend of raw materials that are safe on all surfaces, and are designed specifically for temporary marking. Mark disappears in 10 – 20 days when exposed to water, traffic, and other abrasions. It can also be washed off with a pressure washer if desired. 100% biodegradable.

CAN SIZE (NET)	WEIGHT	CASE PACK
20-oz. Aerosol (15 oz.)	16 lbs.	12 cans

COLOR SELECTION

214 Blue	217 Orange
215 White	218 Yellow
216 Red	219 Green

200 CLEAR COAT

This upside-down clear coating is used to seal and protect construction chalk lines and other temporary marks from wind, moisture, and traffic.

CAN SIZE (NET)	WEIGHT	CASE PACK
20-oz. Aerosol (15 oz.)	16 lbs.	12 cans



MARKING APPLICATORS

Patent Pending.



Shown with marking flags and can installed



New ergonomic grip and trigger.

PROD #	WEIGHT	CASE PACK
1244 Spot Marker	1 lb.	1 ea.
1245 Marking Stick	2 lbs.	1 ea.

APWA/ONE-CALL COLORS



Know what's below.
Call before you dig.

The American Public Works Association (APWA) requires public agencies, utilities, and contractors that excavate underground to use this color standard to identify the location and type of sub-surface utilities. Aervoe Industries was the first marking paint manufacturer to provide the uniform standard for these colors, and our products still proudly carry the One-Call Systems International trademark.

APPLICATION	AERVOE PRODUCT	ALL PURPOSE	CONSTRUCTION	SURVEY
Electric	Red	1381	256	201, 281
Gas-Oil	Yellow	1382	252	202, 282
Water	Blue	1383	254	203
Sewer	Green	1384	259	204
Communication/CATV	Orange	1385	257	205
Proposed Excavation	White	1387	255	207
Reclaimed Water	Purple	—	260	212
Temporary Survey Marking	Pink	1399	249	229

Fluorescent colors may be utilized in place of organic colors if acceptable by local standard.

STAKE DIP

A highly pigmented, solvent-based paint for marking, and designed for use as a stake dip. Adheres to most wood surfaces. Visible for 3–6 months depending on exposure.

CAN SIZE (NET)
Gallon Can

WEIGHT
22 lbs.

CASE PACK
2

COLOR SELECTION

- 220G Fl. Red
- 222G Fl. Orange



MARKING PENS & INK

HEAVY DUTY MARKING PENS

Medium point, felt tip, valve action pens. Mark virtually any surface.

- Xylene-free
- Industrial strength, oil-based
- Heavy duty valve action tip
- Aluminum barrel
- Fast drying, permanent
- Airtight cap increases pen life
- Mark a variety of surfaces, including wood, glass, metal, or plastic

WEIGHT
5 lbs.

CASE PACK
48 Pens

COLOR SELECTION

1221 Red	1226 Black
1222 Yellow	1227 White



MARKING INK

A permanent marking ink specifically formulated for metalworking and color coding.

- Excellent for marking hot metal up to 500°F
- Waterproof, very good weather resistance
- Quick drying; no smears or smudging
- Outstanding adhesion and UV resistance

Uses: For use on most metals and non-porous surfaces including

sheet and cold rolled steel, iron pipe and girders, and metal coils, tube stock, and drums.

CAN SIZE (NET)
16-ounce Aerosol (12 oz.)

WEIGHT
13 lbs.

CASE PACK
12 Cans

COLOR SELECTION

7080 Black	7083 White
------------	------------



STRIPING PAINT AND APPLICATORS



STRIPING PAINT (Solvent-Based)

Aervoe Stripping Paint is designed to adhere to a variety of surfaces, especially asphalt and concrete. Asphalt black is available to correct mistakes, or cover existing lines.

- Fast drying; 5 minutes to touch, 30 minutes to handle
- Durable, long-lasting, high-visibility colors
- 780 Stripping Clear protects and seals stripes
- VOC compliant and lead-free
- Non-clogging spray tip
- Excellent resistance to traffic, oil, and gasoline
- One case of aerosols will yield a 2-inch stripe approximately 2,600 linear feet
- Apply aerosol with #745 Stripping Stick, #800 or #801 Vers-A-Striper

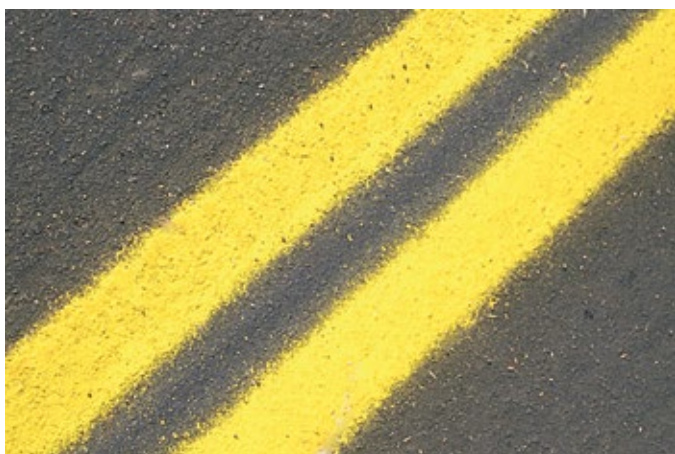
Uses: Parking lots, warehouse aisles, school yards, apartment complexes, road surfaces, tennis courts, fairgrounds, and factory safety aisles.

CAN SIZE (NET)	WEIGHT	CASE PACK
20-oz. Aerosol (18 oz.)	19 lbs.	12 cans
Gallon Can	24 lbs.	2 Gallons

COLOR SELECTION

710 Stripping White	740 Stripping Orange	770 Asphalt Black
720 Stripping Yellow	750 Stripping Blue	780 Stripping Clear
730 Stripping Red	760 Stripping Green	

All Aervoe aerosol stripping paints use a new tip design to produce the sharpest edges available.



SUPREME STRIPING PAINT (High Solids, Solvent-Based)

Our top-of-the-line solvent-based striping paint with the highest pigment, solids-to-weight ratio attainable with today's packaging technology.

- Fast drying; 15 minutes to touch
- VOC compliant and lead-free
- One case of aerosols will yield a 4-inch stripe approximately 800 linear feet
- Durable, long-lasting colors
- Non-clogging tip
- Apply with #745 Stripping Stick, #800 or #801 Vers-A-Striper
- Provides an opaque line that remains durable against ground traffic scuffing

Uses: Parking lots, warehouse aisles, school yards, apartment complexes, road surfaces, tennis courts, fairgrounds, factory safety aisles, and baseball and track fields.

CAN SIZE (NET)	WEIGHT	CASE PACK
20-oz. Aerosol (18 oz.)	19 lbs.	12 cans

COLOR SELECTION

701 Traffic White Supreme
702 Traffic Yellow Supreme

WATER-BASED STRIPING PAINT

A highly pigmented formulation that is safe for all surfaces. It will not cause leaf yellowing, root damage, or burn grass.

- Fast drying; 15 minutes to touch, 30 minutes to handle
- Non-clogging spray tip
- Will not crack tennis court sealant
- VOC compliant and lead-free
- Classified under NFPA 30B, Level I for warehouse storage
- One case of aerosols will yield a 2-inch stripe approximately 2,600 linear feet
- Apply aerosol with #745 Stripping Stick or #801 Vers-A-Striper

Uses: Grass, dirt, artificial turf, concrete, cement, and other surfaces for line striping playgrounds, athletic fields, roads, and warehouses.

CAN SIZE (NET)	WEIGHT	CASE PACK
20-oz. Aerosol (18 oz.)	19 lbs.	12 cans
Gallon Can	24 lbs.	2 Gallons

COLOR SELECTION

790 Stripping White
791 Stripping Yellow
792 Stripping Blue
793 Stripping Red
796 Stripping Fl. Orange



REDO-IT

Adheres to concrete and asphalt to cover mis-marked striping lines or prepare a surface for new striping in one easy step. #830 can be applied to walls to cover graffiti.

- Excellent resistance to traffic and oil
- Non-clogging spray tip
- Lead-free
- Apply with #745 Striping Stick, #800 or #801 Vers-A-Striper

Uses: Parking lots, warehouse aisles, school yards, apartment complexes, road surfaces, tennis courts, fairgrounds, and factory safety aisles.

CAN SIZE (NET)	WEIGHT	CASE PACK
20-oz. Aerosol (17 oz.)	17 lbs.	12 cans

COLOR SELECTION

- 830 Concrete
- 831 Asphalt

AEROSOL STRIPING APPLICATORS

800 VERS-A-STRIPER® - Pavement

A lightweight, heavy-duty applicator for Aervoe aerosol Striping Paint. Stripe widths up to 4 inches. For use on hard surfaces such as asphalt and concrete. Includes a striping alignment guide.

WEIGHT	CASE PACK
26 lbs.	1 ea.

1745 STRIPING STICK

For stenciling and touch up. Approximately 36" long with comfort-grip handle and trigger. Use with Aervoe Striping Paint only.

WEIGHT	CASE PACK
2 lbs.	1 ea.

801 VERS-A-STRIPER® - Turf and Dirt

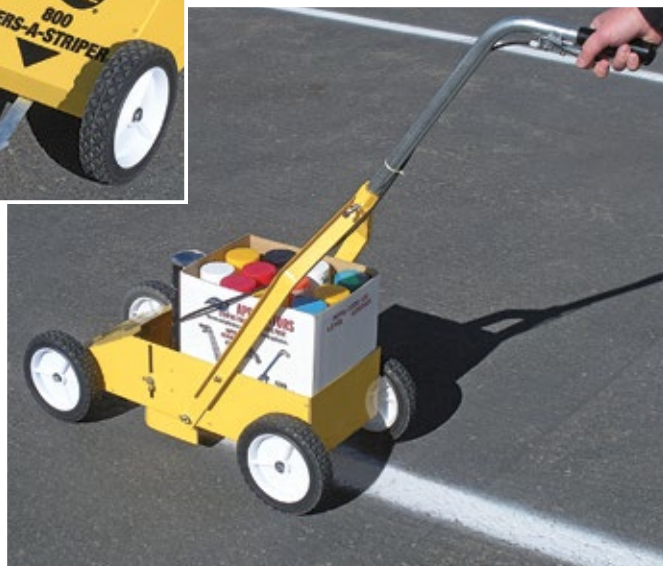
Specially designed for striping athletic fields and other turf and dirt surfaces. For use with Aervoe aerosol Striping Paint. Same model as #800, with 10-inch diameter wheels. Includes a striping alignment guide.

WEIGHT	CASE PACK
21 lbs.	1 ea.

Patent Pending.



1745



M.R.O. PRODUCTS

Professionals turn to Aervoe for the hallmark of specialty cleaners, lubricants, and protective coatings for manufacturing, industrial, and commercial use. Formulated to hold up and ensure continued performance, prevent downtime, and increase operating efficiencies. Choose from a wide variety of Aervoe® and Crown® brand lubricants, cleaners, penetrants, cutting fluids and specialty formulations to provide a specific solution to your problem. Aervoe is your one source shop for all the basics in MRO products. Most products available in gallons may also be obtained in 5 and 50-Gallon containers.

WET LUBRICANTS

ALL-4®

Clean, penetrate, lubricate, protect—does All-4.

- Silicone free
- Displace moisture
- Cleans away dirt and grease
- No gummy residue
- Fills microscopic irregularities on surfaces
- Meets Military Spec. #MIL-C-16173D, Group III
- Spray-Any-Way valve allows product to be applied in either an upright or upside down position
- Includes an extension tube for hard to reach areas

Uses: For use on machinery, spare parts, nuts, bolts, lawn mowers, guns, wheels, aircraft parts, taps and dies, marine and mining equipment, office machines, sliding doors, and hinges.

CAN SIZE (NET)

16-ounce Aerosol (11 oz.)
Gallon Can
5-Gallon Pail
55-Gallon Drum (50 gal.)

WEIGHT

12 lbs.
8 lbs.
39 lbs.
387 lbs.

CASE PACK

12 Cans
1 Gallon
1 Pail
1 Drum



937 TEF-LUBE™

Tef-Lube™ is a superior lubricant that combines the advantages of high-grade petroleum oils and solvents with micron-sized PTFE to provide the finest multi-component penetrating lubricant system available.

- Protects against corrosion; displaces moisture
- Keeps equipment running longer
- Reduces friction and increases part life
- Reduces costly breakdowns caused by worn and dirty parts
- Penetrate inaccessible areas with extension tube
- Spray-Any-Way valve allows aerosol to be applied in either an upright or upside down position
- Includes an extension tube for hard to reach areas
- Performs at temperatures from -60°F to 475°F (-51°C to 246°C)
- Meets MIL-C-372B (Small arms bore cleaner), MIL-C-23411/A (Corrosion preventive compound), VV-P-216B (Penetrating oil), VV-L-820C (General purpose lubricating oil), and VV-L-751C (Chain, wire rope lubricating oil)

Uses: Chains, bearings, gears, sprockets, conveyors, electric motors and switches, locks, air tools, firearms, fishing reels, sporting equipment, office machines, appliances, and in aircraft maintenance and automotive assemblies.

CAN SIZE (NET)

16-ounce Aerosol (12 oz.)

WEIGHT

14 lbs.

CASE PACK

12 Cans

7043 WIRE ROPE, CHAIN, & CABLE LUBE

A high grade lubricating oil that is fortified with molybdenum disulfide to penetrate inaccessible areas and provide superior lubrication where temperature and stress will break down ordinary lubricants.

- Excellent water displacing characteristics provide corrosion protection
- Provides excellent metal penetration
- Travels deep into wire ropes and exposed gearboxes, and along cabling
- Dark gray color allows easy visibility of application
- Will not wash away or rub off
- Reduces wear and increases chain life
- Performs at temperatures between -20°F and 300°F (-29°C and 149°C)
- FALEX E.P. Test Fallen Load to 4,500 lbs.

Uses: Chain drives and pins, open gearing, sprockets, wire ropes, bushings, rollers, clippers, cables, hoists, gearboxes, chain saws, conveyors, motorcycle and bicycle chains, and other metal surfaces.

CAN SIZE (NET)

16-ounce Aerosol (12 oz.)

WEIGHT

14 lbs.

CASE PACK

12 Cans

932 FOOD GRADE LUBE OIL

Aervoe's Food Grade Lube Oil is an economical, non-silicone lubricating oil.

- NSF H-1 - clear mineral oil
- Penetrates the surface to loosen rust, corrosion, scale, and dirt
- Leaves a clear, stainless film that prevents machinery parts from sticking
- Resists moisture and does not leave a residue
- Excellent in areas where silicone over spray might interfere with carton sealing or capping operations
- Separates from water even under acid/alkali conditions
- Dielectric strength of 30kV/mm

Uses: Equipment in food processing plants, dairies, bakeries, soft drink plants, supermarkets, breweries, and grain elevators. Apply to chains, chain drive belts, bearings, belts, machinery valves, pistons, rollers, stainless steel pumps, bottle filling machinery, and slicing machines.

CAN SIZE (NET)
16-ounce Aerosol (11 oz.)

WEIGHT
13 lbs.

CASE PACK
12 Cans



7045 HEAVY DUTY OPEN GEAR & WIRE ROPE LUBE

This high-grade asphaltic grease won't become brittle, is not affected by weather, and has outstanding adhesion properties.

- Minimizes internal friction
- Displaces water to provide excellent rust and corrosion protection
- Prevents metal bearing surfaces from becoming crazed and brittle
- Withstands extreme pressures with maximum adhesion
- Withstands wash downs; migrates on metal surfaces to the core of wire rope and spring windings
- Performs at temperatures between 0°F and 250°F (-18°C and 121°C)

Uses: Wire rope, exposed gears, winches, roller chains, elevator cables, conveyor rolls, fifth wheels on tractor trucks, draglines, construction machinery, and anywhere else that lubrication and superior mastic properties are desired.

CAN SIZE (NET)
16-ounce Aerosol (12 oz.)

WEIGHT
14 lbs.

CASE PACK
12 Cans

8036 FOOD GRADE SILICONE LUBE

A low viscosity silicone lubricant that eliminates squeaks, insulates and waterproofs electrical parts.

- NSF H-1
- 4% silicone formula
- Odorless, colorless, non-staining, dry residual film
- Prevents sticking and won't transfer to end parts
- Will not interfere with carton sealing, bottle capping, or other food preparation applications
- Will not harm paint, metal, wood surfaces, and most plastics
- Reduces noise and wear where friction may occur
- Separates from water even under acid/alkali conditions
- Waterproofs ignition systems
- Dielectric strength of 35kV/mm

Uses: Metal hinges, plastic rollers, guide rails, slides, or anything that sticks. Can also be used on air tables and on food preparation equipment such as dough mixers, guards, food racks, knives, saws, and slicing machines.

CAN SIZE (NET)
16-ounce Aerosol (10.5 oz.)
Gallon Can

WEIGHT
12 lbs.
15 lbs.

CASE PACK
12 Cans
2 Gallons



8034 SILICONE LUBE

This multi-purpose lubricant leaves a clear residual film that helps prevent sticking without transferring to the surface. Slower dry allows full penetration into rubber surfaces.

- 5% silicone formula
- Insulates, stops squeaks and sticking, prevents freezing
- Brings life back to old rubber and weather-stripping keeping it soft and flexible
- Will not harm most plastics
- Repels water; waterproofs ignition systems

Uses: Metal hinges, plastic rollers, rubber mountings, O-rings, electrical insulation, slides, guides, conveyors, dough mixers, saws, grinders, doors, locks, trunk lids, and any sliding surface.

CAN SIZE (NET)
16-ounce Aerosol (10.5 oz.)
Gallon Can
5-Gallon Pail
55-Gallon Drum (50 gal.)

WEIGHT
12 lbs.
18 lbs.
34 lbs.
340 lbs.

CASE PACK
12 Cans
2 Gallons
1 Pail
1 Drum

DRY FILM LUBRICANTS

6075 DRY FILM LUBRICANT

An industrial strength dry PTFE lubricant that is ideal whenever silicone products are not acceptable, and higher temperatures or pressure performance is required.

- Durable up to 500°F (260°C) for extended periods
- Won't interfere with post-finishing operations
- Reduces clean-up labor time
- Safe for rubber, wood, and metals
- Unique, dry lubricating qualities; will not collect dust

Uses: Recommended for use in any situation where reduced friction and drag is desired on plastic, glass, rubber, metal, or wood. Ideal in textiles industry, on instruments, tools, drawers, windows, conveyor belts, cord, wire, and machine parts.

CAN SIZE (NET)
16-ounce Aerosol (11 oz.)

WEIGHT
13 lbs.

CASE PACK
12 Cans



6080 DRY MOLY LUBRICANT

This quick drying lubricant leaves a thin film that provides extreme pressure lubrication.

- Provides lubrication at temperatures between -100°F to 700°F (-73° to 371°C)
- Withstands pressures up to 100,000 psi
- Quick drying
- Ideal for assembly and break-in lubrication
- Resists corrosion
- Bonds to metal surfaces without attracting dirt or dust
- Prevents sliding or threaded parts from seizing
- Does not contain oil or dilutants

Uses: Automotive and industrial gaskets, grinding belts, threaded connections, metal belts, rubber components, sliding surfaces and gears, shafts, hinges, cams, bearings, chain drives and pulleys, chutes and bins, vending machines, and conveyor belts where heat is present. Works well in assembly and break-in of motors, machinery, pumps, compressors, and valves.

CAN SIZE (NET)
16-ounce Aerosol (11.6 oz.)

WEIGHT
13 lbs.

CASE PACK
12 Cans

8078 DRY GRAPHITE LUBRICANT

Specifically designed for engine or mechanical parts prior to their assembly. Made of natural colloidal graphite and is an ideal lubricant when petroleum products must be avoided.

- Provides lubrication at temperatures of -100° to 1000°F (-73° to 538°C)
- Excellent choice for extreme temperature lubrication
- Dry, oil-free coating that won't attract dirt or dust
- Does not contain oil or moisture-based dilutants
- Stops squeaks and sticking on contact with excellent conductivity
- Uniform coat bond prevents scoring and seizing
- Unique protective film gives "new finish" appearance

Uses: Ideal on automotive and industrial gaskets, conveyors, bearings, sliding windows and doors, locks, springs, chains, sprockets, plating non-conductors, mating surfaces on machines, and pre-assembly lubrication of moving parts.

CAN SIZE (NET)
16-ounce Aerosol (12 oz.)

WEIGHT
13 lbs.

CASE PACK
12 Cans

SPRAY GREASE

7037 LITHIUM GREASE

This all weather grease and lubricant is recommended for general metal-to-metal applications. It is compatible with plastics and rubber. Heavy conical spray doesn't drip or run on vertical surfaces.

- Resists corrosion and oxidation on unpainted metal surfaces
- Provides all-weather lubrication for moving parts
- Effective from -70°F to 360°F (-57°C to 182°C)
- Reduces friction and eliminates squeaks and squeals
- Excellent compatibility with exotic metals, plastics, and rubber
- Case includes 12 alternate tips with extension tubes for precision application in hard to reach areas

Uses: Chains, gears, drives, hinges, intricate metal catches, fine gear cases, bolts, and other vertical or overhead surfaces. Can also be used on knockout pins on mold equipment.

CAN SIZE (NET)
16-ounce Aerosol (11 oz.)

WEIGHT
13 lbs.

CASE PACK
12 Cans



7038 RED GREASE

This all-weather red grease and lubricant is recommended for general metal-to-metal applications. It is compatible with plastics and rubber. Heavy conical spray doesn't drip or run on vertical surfaces. The red color provides easy visual inspection.

- Resists corrosion and oxidation on unpainted metal surfaces
- Provides all-weather lubrication on moving parts
- Effective from 0°F to 450°F (-18°C and 232°C)
- Reduces friction and eliminates squeaks and squeals
- Excellent compatibility with exotic metals, plastics, and rubber
- Case includes 12 alternate tips and extensions for precision application in hard to reach areas

Uses: For Use in manufacturing facilities. Metal, plastic, rubber, chains, gears, drives, hinges, bolts, and other vertical or overhead surfaces. Do not use on electrical equipment or machinery while in operation.

CAN SIZE (NET) **WEIGHT** **CASE PACK**
16-ounce Aerosol (11 oz.) 13 lbs. 12 Cans

933 FOOD GRADE LUBE GREASE

Multi-service, non-melting, fortified waterproof spray grease forms a durable film that withstands high temperature and daily equipment washdowns.

- NSF H-1
- PTFE fortified
- N.L.G.I. Grade 2
- Grease forms a tough, durable film that prevents metal-to-metal contact
- Lubricates, seals out water and resists chemical attack
- Performs at temperatures up to 475° F
- Compatible with most plastics
- 35 lbs. load-carrying capacity based on Timken OK load tests
- Dielectric strength of 30kV/mm

Uses: Use as a general purpose lubricant on slides, guides, chains, conveyors, and other transfer equipment found in food, beverage, meat, dairy, and marine processing plants. Best when used on unpainted surfaces.

CAN SIZE (NET)
16-ounce Aerosol (11 oz.)

WEIGHT
13 lbs.

CASE PACK
12 Cans



7041 MOLY GREASE

This high-grade molybdenum disulfide lubricant waterproofs and rustproofs while under heavy stress and vibration.

- Prevents seizing and galling
- Stays in place under extreme pressure loads; will not leak out
- Performs at temperatures up to 450°F (232°C)

Uses: Electric motor bearings, open or exposed gears, fan bearings, pump bearings, conveyor bearings, power take-off, wire rope, fifth wheels on tractor trucks, machine tools, metal forming presses, threads, sprockets, hoists, and anywhere heat is generated from metal-to-metal contact. Ideal for forklift maintenance of cables and chains as well as flexible couplings.

CAN SIZE (NET) **WEIGHT** **CASE PACK**
16-ounce Aerosol (11 oz.) 13 lbs. 12 Cans

PENETRANTS & CORROSION PREVENTION

6007 RUST INHIBITOR

Prevents rust on tools, steel stock, and parts. Provides temporary or extended protection of machinery. Great for long term indoor storage.

- Absorbs moisture
- Fortified with lanolin
- Neutralizes acid formed by corrosive atmosphere

Uses: Prevents rust on tools, steel stock, parts, and temporary or extended protection of machinery.

CAN SIZE (NET)	WEIGHT	CASE PACK
16-ounce Aerosol (11 oz.)	13 lbs.	12 Cans
Gallon Can	16 lbs.	2 Gallons
5-Gallon Pail	35 lbs.	1 Pail
55-Gallon Drum (50 gal.)	354 lbs.	1 Drum

6030 PENETRATING OIL

Loosens rust and corrosion formed by alkali, fruit acids, water, and electrolysis.

- Formulated with low surface tension for fast penetrating action
- Makes disassembly of parts possible with savings in time and material; attacks rust and corrosion
- Displaces moisture; free frozen parts
- Bulk flash point >160°F (71°C); dielectric strength 35kV/mm

Uses: Metals, alloys, rubber, and most painted surfaces. Release rusted and corroded nuts, pipes, pumps, hinges, valves, screws, pulleys, shafting, mufflers, stud bolts, heat risers, battery cables, roller conveyors, and wheel lug nut release.

CAN SIZE (NET)	WEIGHT	CASE PACK
16-ounce Aerosol (11 oz.)	13 lbs.	12 Cans

6013 CORROSION SUPPRESSANT 101

Provides excellent rust protection for metal parts that must be stored, indoors or outdoors, for long periods of time. Excellent for outdoor metal shipments and outdoor storage.

- Non-sticky, film provides excellent corrosion protection
- Seals out acid, moisture, air, salt water and other corrosive elements
- Neutralizes acid formed by corrosive atmosphere
- Prevents corrosion caused by fingerprints
- Penetrates cracks, assuring complete protection
- Easily removed with a mild solvent
- Does not contain silicone
- Does not contain CFCs, HCFCs, or chlorinated solvents
- Meets MIL-C-16173E, Grade 4

Uses: All metal surfaces, marine equipment, farm machinery, construction equipment, electric motors, engines, storage tanks, pipes, dies, molds, parts, tools, vehicle and machinery bodies and frames, containers, cables, industrial parts, electrical equipment, threads, locks, gears, railroad equipment, and sporting equipment.

CAN SIZE (NET)	WEIGHT	CASE PACK
16-ounce Aerosol (10.5 oz.)	12 lbs.	12 Cans
Gallon Can	18 lbs.	2 Gallons
5-Gallon Pail	41 lbs.	1 Pail
55-Gallon Drum (50 gal.)	430 lbs.	1 Drum



LUBRICANT, GREASE, PENETRANT USER GUIDE

AERVOE PRODUCT	BASE MATERIALS ACTIVE INGREDIENTS	TEMP RANGE	NSF CATEGORY	LUBRICITY FALEX FLC TEST	AEROSOL FLASH POINT	DIELECTRIC STRENGTH	PENETRATING ABILITY	CORROSION PROTECTION
932 Food Grade Lube Oil	Mineral Oil	Up to 475°F	H-1	35 ft. lbs.	<0°F	30kV/mm	Excellent	Good
933 Food Grade Lube Grease	Synthetic Oil, PTFE	Up to 500°F	H-1	>150 ft. lbs.	<0°F	30kV/mm	Good	Excellent
937 Tef-Lube™	Petroleum Oil, PTFE	-60°F to 475°F	—	>100 ft. lbs.	>160°F	19kV/mm	Excellent	Excellent
6030 Penetrating Oil	Petroleum Distillate/Aliphatic Solvents	-50°F to 350°F	—	30 ft. lbs.	>160°F	35kV/mm	Excellent	Good
6075 Dry Film Lubricant	PTFE, Hexane, Acetone	Up to 500°F	—	60 ft. lbs.	<0°F	600V/mm	Good	Good
6080 Dry Moly Lubricant	Molybdenum Disulfide, Liquid Thermoset Resin	Up to 750°F	—	>100 ft. lbs.	<0°F	N/A	Excellent	Good
7037 Lithium Grease	Neutral Lithium Grease, Aliphatic Solvents	-70°F to 350°F	—	>60 ft. lbs.	<0°F	>20kV/mm	Good	Good
7038 Red Grease	NLGI Grade Z Aluminum Complex Based	0°F to 450°F	—	>200 ft. lbs.	<20°F	TBD	Good	Good
7041 Moly Grease	Molybdenum Disulfide, Naphthionic & Paraffinic Oils	Up to 500°F	—	>100 ft. lbs.	<0°F	N/A	Good	Excellent
7043 Wire Rope, Chain & Cable Lube	Petroleum Base Oils, Molybdenum Disulfide	-20°F to 300°F	—	>100 ft. lbs.	0°F	N/A	Excellent	Good
7045 H.D. Open Gear & Wire Rope Lube	Molybdenum Disulfide, Poly Butane	0°F to 250°F	—	>150 ft. lbs.	<0°F	>20kV/mm	Good	Excellent
7340 All-4	White Oil, Mineral Spirits	-50°F to 350°F	—	40 ft. lbs.	155°F	33kV/mm	Excellent	Excellent
8034 Silicone Lube	Silicone Fluid, Petroleum Naphtha	-50°F to 500°F	—	>30 ft. lbs.	<0°F	35kV/mm	Excellent	Good
8036 Food Grade Silicone Lube	Silicone Fluid, Hexane	-50°F to 500°F	H-1	30 ft. lbs.	<0°F	35kV/mm	Excellent	Good
8078 Dry Graphite Lubricant	Carbon Graphite, Gum Resin	Up to 850°F	—	75 ft. lbs.	<0°F	N/A	Excellent	Excellent

ANTI-SEIZE

COPPER ANTI-SEIZE COMPOUNDS

This copper-based anti-seize is designed to lubricate and protect most metals from corrosion and seizure.

- Will not harden, separate, or evaporate
- Protects parts under extreme heat, cold, pressure, steam, and salt water exposure
- Cannot be burned off and will not melt or run out after application
- Provides excellent lubricity and better make-up and breakout torque
- Durable, long-lasting film
- Does not contain clay or soap base thickeners
- Eliminates parts wear and breakage
- Contains the maximum blend of metallic boundary lubricants homogenized into a specially designed semi-synthetic lubricating grease
- Food grade anti-seize is available
- Meets MIL-A-907E
- Does not contain CFCs, HCFCs, or chlorinated solvents
- Brush top bottle has angled applicator brush so entire contents can be removed
- Protects against corrosion, seizing, rust, galling, galvanic pitting, and carbon fusing

PROD #	CAN SIZE (NET)	WEIGHT	CASE PACK
9120	16-ounce Aerosol (12 oz.)	14 lbs.	12 Cans
9123	1-lb. B/T Bottle	15 lbs.	12 Bottles



9105 ANTI-SEIZE COMPOUND

Provides an aerosol delivery of graphite in a thin black film for stud assemblies, flange bolts, cylinder heads, high temperature connections, and manhole lugs. Operating temperature range up to 2000°F (1093°C).

CAN SIZE (NET)	WEIGHT	CASE PACK
16-ounce Aerosol (11 oz.)	13 lbs.	12 Cans



ANTI-SEIZE USER GUIDE

TECHNICAL DATA	COPPER ANTI-SEIZE	ANTI-SEIZE COMPOUND
COLOR	Copper	Black
BOILING POINT (Aerosol) (Bulk)	-44°F to 500°F 500°F	500°F —
FLASH POINT (Aerosol) (Bulk)	-50°F T.C.C. 325°F	<0° —
SPECIFIC GRAVITY (Aerosol) (Bulk)	0.78 1.24	— —
OPERATIONAL TEMPERATURE RANGE	-40°F to 2000°F	40°F to 2000°F
APPLICATIONS	Threaded connections, valves, bushings, sleeves, flanges, machinery, pumps, manifolds, and compressors	Stud assemblies, flange bolts, cylinder heads, high temperature connections, manhole lugs

CLEANERS / DEGREASERS

399 Lfp CLEANER/DEGREASER

This fast-drying, industrial strength solvent is inexpensive and ideal for cleaning and degreasing. Removes grease, oil, wax, adhesives, and other contaminants without leaving a residue. Has a low flash point (Lfp). Flammable.

- Fast evaporation
- Non-chlorinated
- High-pressure spray action and unique wetting action, penetrates and degreases
- Reduces failures and helps to increase equipment life by eliminating faulty operation of dirty moving parts
- Can be applied while mechanical parts are operating
- Non-corrosive, non-conductive formula displaces moisture
- High dielectric strength of 33kV/mm
- Does not contain CFCs or HCFCs
- Includes extension tube for precision application in hard to reach cracks and crevices

Uses: Motors, tools, machinery, metal parts, mechanical equipment, air conditioners, aircraft parts, automotive parts, bearings, chains, packaging machinery, compressors, generators, portable tools, office machinery, pumps, mechanical brakes and clutches, relays, gears, cables, locks, sporting equipment, solenoids, and more.

CAN SIZE (NET)	WEIGHT	CASE PACK
20-ounce Aerosol (15 oz.)	16 lbs.	12 Cans
Gallon Can	16 lbs.	2 Gallons
5-Gallon Pail	37 lbs.	1 Pail
55-Gallon Drum (50 gal.)	366 lbs.	1 Drum



GLASS CLEANER

An industrial grade cleaner that leaves glass shining with little effort. Will cut through tough factory film and grime to leave a streak-free finish, while retarding fogging.

- Cleans any glass surface
- Wipes off for a sparkling finish
- Fast acting

Uses: All glass surfaces including mirrors and windows.

CAN SIZE (NET)	WEIGHT	CASE PACK
20-ounce Aerosol (19 oz.)	19 lbs.	12 Cans
Gallon Bottle	19 lbs.	2 Gallons
5-Gallon Pail	43 lbs.	1 Pail
55-Gallon Drum (50 gal.)	435 lbs.	1 Drum



5075 BIODEGRADABLE CLEANER/DEGREASER

This biodegradable, non-flammable cleaner and degreaser is concentrated and can be diluted with water to make gallons of cleaner for all washable surfaces. From a full-strength degreaser to an all-purpose cleaner.

- 100% Biodegradable
- NSF A-1
- Non-flammable and non-toxic
- Fast-acting, industrial strength
- Does not contain chlorinated solvents

Uses: Engines, outdoor machinery, wheels, tires, windows, appliances, counter tops, and as a spot remover on fabrics and carpets. Safe for use around children and animals.

CAN SIZE (NET)	WEIGHT	CASE PACK
20-ounce Aerosol (17 oz.)	18 lbs.	12 Cans
Quart Bottle	25 lbs.	12 Quarts
Gallon Bottle	35 lbs.	4 Gallons
5-Gallon Pail	47 lbs.	1 Pail
55-Gallon Drum (50 gal.)	485 lbs.	1 Drum



5055 ALL PURPOSE CLEANER

This water and ammonia based cleaner provides a low foaming action cleaner for breaking up grime.

- Cuts through grease
- Cleans and polishes
- USDA C-1
- Excellent on granite surfaces

Uses: For hard to clean spots on wood, metal, tile, porcelain, plastic, chrome, etc.

CAN SIZE (NET)	WEIGHT	CASE PACK
16-ounce Aerosol (15 oz.)	15 lbs.	12 Cans



CLEANER / DEGREASER USER GUIDE

AERVOE PRODUCT	BASE MATERIALS	FLASH POINT	KB VALUE	EVAPORATION RATE	DIELECTRIC STRENGTH	APPEARANCE	ODOR
399 LFP Cleaner Degreaser	Petroleum Naphtha, Glycol Ether	<20°F	80	4	33kV/mm	Thin, non-foaming	Mild
415 Off Line Contact Cleaner H.D.	Hexane, Ethanol	<0°F	31	8.1	Not applicable	Thin, non-foaming	Mild
860 Glass Cleaner	Water, Blended Alcohols	None	Not applicable	0.9	Not applicable	Clear, foaming	Floral
5021/5025 Hand-y Towels	No reportable quantities	None	Not applicable	<1	Not applicable	Clear	Slight Citrus
5055 All Purpose Cleaner	Ammonia, Water	None	Not applicable	<1	Not applicable	Clear, light yellow	Pine
5075 Biodegradable Cleaner/Degreaser	Water, Surfactants	>200°F	Not applicable	Not applicable	Not applicable	Transparent violet	Citrus
8260 Heavy Duty Citrus Cleaner & Degreaser	Aliphatic Hydrocarbons, DiLimonene	115°F	44	<1	>20kV/mm	Clear	Citrus
8276 Off Line Contact Cleaner	Hexane, Isopropyl Alcohol	<0°F	29	6	Not applicable	Clear, colorless	Hydrocarbon
8377 Elect. Component Cleaner (NF)	Dichlorethylene	None	66	8.1	38kV/mm	Clear, colorless	Mild

HAND-Y CLEANING TOWELS

These waterless cleaning towels are lint-free, and packaged in a convenient tub with a dispenser lid for easy access. The Hand-Y Pro Towel is smooth on one side and rough on the other for scrubbing grit action.

- ▶ Replaces many light hand cleaners
- ▶ Cleans hands, tools, equipment, and more
- ▶ Pre-moistened, no need for water
- ▶ Fresh citrus scent
- ▶ VOC compliant in all 50 states
- ▶ Bracket available to mount on any wall

Uses: Ideal for removing adhesives, paint, grease, grime, ink, lubricants, tar, and other industrial stains and soils.



DON'T FORGET THE WALL BRACKET!
Mounts to wall and holds 1 tub.



PROD # / PACKAGE SIZE (NET)	WEIGHT	CASE PACK
5021 Hand-Y Cleaning Towels (75-Towel Tub)	17 lbs.	6 Tubs
5025 Hand-Y Pro Towels (75-Towel Tub)	17 lbs.	6 Tubs
5027 Hand-Y Towel Wall Bracket	1 lb.	1 Bracket

ELECTRICAL CLEANING

415 OFF-LINE CONTACT CLEANER H.D.

This fast evaporating cleaner is highly refined and designed for use on high-tech electronic hardware and PCBs and PWBs. It is safe for use on metal, plastics, rubber, and glass surfaces.

- Flammable, not to be used on energized equipment or in operation
- Quick, penetrating action, leaves no residue
- Plastic-safe
- Effectively removes grease, oil, dirt, and other contaminants, displaces water and moisture
- Includes extension tube for precision application
- High-delivery spray action assures complete saturation
- Unique wetting action cleans the finest of instruments, contacts, relays, precision mechanical or electrical solenoids, and other delicate hardware

Uses: Electrical components, connectors, contacts, magnetic tape heads, semiconductor assemblies, precision instruments, printed circuits, computer components, relays and controls.

CAN SIZE (NET)	WEIGHT	CASE PACK
20-ounce Aerosol (15 oz.)	17 lbs.	12 Cans
Gallon Can	14 lbs.	2 Gallons
5-Gallon Pail	38 lbs.	1 Pail
55-Gallon Drum (50 gal.)	375 lbs.	1 Drum



8276 OFF-LINE CONTACT CLEANER

A fast-evaporating, low-odor cleaner for off-line electrical equipment maintenance.

- Flammable, not to be used on energized equipment or in operation
- Effectively removes grease, oil, dirt, and other contaminants, displaces water and moisture
- Does not leave a film or residue
- Safe on most plastics and metals
- Does not contain CFCs, HCFCs, or chlorinated solvents

Uses: To be used on out-of-service electronic components. For relays, terminals, switches, etc.

CAN SIZE (NET)	WEIGHT	CASE PACK
16-ounce Aerosol (10.9 oz.)	13 lbs.	12 Cans

8260 OFF-LINE CITRUS CLEANER

A heavy duty and safe on most plastics.



- Citrus based cleaner
- Wipes off without rinsing
- Does not leave a residue
- Does not contain CFCs, HCFCs, or chlorinated solvents

Uses: To be used on out-of-service electronic components. For relays, terminals, switches, etc.

CAN SIZE (NET)	WEIGHT	CASE PACK
20-ounce Aerosol (15 oz.)	16 lbs.	12 Cans
Gallon Can	16 lbs.	2 Gallons
5-Gallon Pail	37 lbs.	1 Pail
55-Gallon Drum (50 gal.)	375 lbs.	1 Drum



8377 ELECT. COMPONENT CLEANER

This no-flash, fast penetrating, high pressure cleaner is designed for precision cleaning on electronic hardware and printed circuit boards.

- Non-flammable
- Effectively removes grease, oil, dirt, and other contaminants
- No flash cleaner
- Dielectric strength 26kV
- Evaporates quickly without leaving a film or residue
- Safe on most plastics, coatings, or paints
- Includes extension tube for precision application
- Low surface tension allows for easy penetration and eliminates the need for disassembly of component parts
- Restores and maintains original electronic values and constants

Uses: Electrical contacts and terminals, semiconductor assemblies, precision instruments, circuit breakers, printed circuits, switches, relays and controls, mechanical or electrical solenoids, telephone equipment, motors, sensors, and televisions.

CAN SIZE (NET)	WEIGHT	CASE PACK
16-ounce Aerosol (14 oz.)	15 lbs.	12 Cans

CUTTING & FABRICATING

887 WELDING ANTI-SPATTER

This vegetable based formulation provides a protective film coating to aid in removal of weld spatter, and keeps welding tips and nozzles clean.

- Light yellow, tacky film visually confirms coverage
- Prevents spatter from adhering to surrounding metal surfaces
- Eliminates grinding and chiseling
- Quick and easy clean up
- Does not contain silicones

Uses: Welding and torch cutting devices, including MIG and TIG nozzles and tips, weldments, electrode holders, fixtures, resistant welding tips, and in all types of maintenance/production welding applications.

CAN SIZE (NET)	WEIGHT	CASE PACK
16-ounce Aerosol (12 oz.)	14 lbs.	12 Cans



890 CUTTING OIL (water-based)

Thinnable water-based cutting oil improves metal cutting operations and increases efficiencies in machining operations.

- Reinforced with high-viscosity oils and sulfur-free, extreme pressure additives
- Prolongs tool life, reduces tool sharpening and down time
- Lubricates and cools at the cutting point
- Liquid bulk formula is non-flammable.

Uses: Sawing, tapping, grinding, machining, threading, and drilling. Recommended for use on all metals including stainless steel and soft metals such as aluminum, brass, and copper. Use on turret lathes, gear cutters, broaches, and automatic screw machines.

CAN SIZE (NET)	WEIGHT	CASE PACK
16-ounce Aerosol (13 oz.)	14 lbs.	12 Cans
Gallon Can	19 lbs.	2 Gallons
5-Gallon Pail	46 lbs.	1 Pail
55-Gallon Drum (50 gal.)	459 lbs.	1 Drum

7020 CUTTING OIL (solvent-based)

A solvent-based lubricant and coolant for industrial cutting operations.

- Reduces wear
- Great for soft or hard metals
- Make clean cuts

Uses: Turret lathes, gear cutters, grinders, automatic screw machines, and pipe threaders.

CAN SIZE (NET)	WEIGHT	CASE PACK
16-ounce Aerosol (10.5 oz.)	12 lbs.	12 Cans
Gallon Can	18 lbs.	2 Gallons
5-Gallon Pail	42 lbs.	1 Pail
55-Gallon Drum (50 gal.)	417 lbs.	1 Drum

BUTTERCUTT CUTTING/TAPPING COMPOUND

This high temperature, high pressure film provides dependable tool point lubrication.

- USDA certified 98% biobased product
- All natural ingredients
- Flash point of 550°F (288°C)
- No etch or staining

Uses: For boring, drilling, planing, milling, sawing, tapping, and many other close-tolerance operations. On stainless steel, nickel and copper alloys, die and tool steels, and other metals and alloys that are difficult to cut or tap.

CAN SIZE (NET)	WEIGHT	CASE PACK
5040 Pint Can	17 lbs.	12 Pints
5041 Gallon Bottle	18 lbs.	2 Gallons



6001 TOOLMAKER'S INK BLUE

This specially formulated blue layout fluid is for use in tool and die making, pattern-making, machining and other related applications.

- Dries instantly; will not peel, flake or rub off
- Ultimate coverage for accurate scribing without glare
- Excellent adhesion to all metals, aluminum and glass
- Easily removed with Crown #6095 Toolmaker's Ink Remover
- Heat resistant, non-corrosive formula

Uses: Tool and die making, pattern making, machining, templates, machined parts and maintenance mechanicals.

CAN SIZE (NET)	WEIGHT	CASE PACK
16-ounce Aerosol (12 oz.)	13 lbs.	12 Cans
Gallon Can	17 lbs.	2 Gallons
5-Gallon Pail	40 lbs.	1 Pail
55-Gallon Drum (50 gal.)	403 lbs.	1 Drum



6095 LAYOUT FLUID REMOVER

Use to remove #6001 Toolmaker's Ink Blue and #6090 Prussian Blue High Spot Indicator.

CAN SIZE (NET)	WEIGHT	CASE PACK
16-ounce Aerosol (10.5 oz.)	12 lbs.	12 Cans
Gallon Can	17 lbs.	2 Gallons
5-Gallon Pail	39 lbs.	1 Pail
55-Gallon Drum (50 gal.)	392 lbs.	1 Drum

6090 PRUSSIAN BLUE HIGH SPOT INDICATOR

Prussian Blue High Spot Indicator is for determining high spots on surfaces and for mating components in assembly operations.

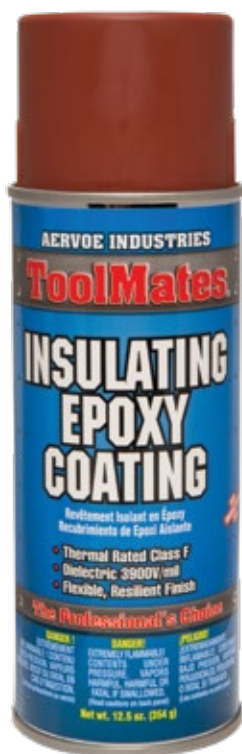
- Quick identification of high spots
- Significantly reduces timely level checks
- Identify points of interference that cause heat and wear
- Easily removed with #6095 Toolmaker's Ink Remover

Uses: For locating high spots when scraping bearing surfaces, etc.

CAN SIZE (NET)	WEIGHT	CASE PACK
6-ounce Aerosol (4.5 oz.)	7 lbs.	12 Cans

CUTTING & FABRICATING USER GUIDE						
AERVOE PRODUCT	BASE MATERIALS ACTIVE INGREDIENTS	TEMP RANGE	LUBRICITY FALEX FLC TEST	AEROSOL FLASH POINT	PENETRATING ABILITY	CORROSION PROTECTION
887 Welding Anti-Spatter	Lecithin, Water	0° to 312°F	N/A	>100°F	N/A	Good
890 Cutting Oil	Emulsified Oil, Water	0° to 312°F	>100 ft. lbs.	N/A	Good	Good
5040/5041 Buttermutt Cutting/Tapping Comp.	Animal Fat	Up to 650°F	N/A	>650°F	Poor	Good
6001 Toolmaker's Ink Blue	Methyl Ethyl Ketone, Toluene	0°F to 350°F	N/A	<0°F	N/A	N/A
6090 Prussian Blue High Spot Indicator	Lanolin, Trichloroethylene	0°F to 350°F	N/A	<0°F	Poor	Good
6095 Layout Fluid Remover	Heptane, Methyl Ethyl Ketone	0°F to 200°F	N/A	0°F	Excellent	Poor
7020 Cutting Oil Light Oil, Solvent-based	Petroleum Lubricating Oil	0°F to 390°F	90 ft. lbs.	<0°F	Excellent	Good

ELECTRICAL INSULATING



INSULATING EPOXY COATING

A tough, flexible coating that protects and insulates exposed wires and electrical windings. Ideal for insulating coils, transformers and other electrical components.

- Air dries in 15 minutes, hardens in 1 hour
- Dielectric strength – up to 2,270 V/mil
- Excellent adhesion and high arc resistance
- Superior to lacquers and acrylics
- Class F thermal resistance
- Allows for motor heat expansion and contraction
- Resists abrasion and wear; will not chip, peel, or become brittle
- Resists oil, water, acids, and alkalis
- Penetrates, coats, and seals in one step

Uses: Field coils, motor windings, taped coils, exposed metal, frayed insulation, pitted motor windings, bus bars and switchboard parts, transformers, commutator ends, sealing electrical and electronic components, collector rings, transformers, armatures, and inside walls of control boxes.

CAN SIZE (NET)

16-ounce Aerosol (12.5 oz.)

WEIGHT

14 lbs.

CASE PACK

12 Cans

COLOR SELECTION

- 401 Red
- 402 Black
- 403 Clear

6084 RED INSULATING VARNISH

Flexible, tough, oil-proof film. This insulating varnish is a Class F epoxy ester with a dielectric strength of 1200V/mil wet and 2100 V/mil dry.

- Cures completely in 24 hours
- Darkness of color indicates coating thickness
- Penetrates, coats, and seals in one step
- Class F thermal resistance

Uses: For armature and stator windings, high voltage circuits, coating frayed insulation, and to restore dielectric properties lost as a result of wear or damage.

CAN SIZE (NET)

16-ounce Aerosol (13 oz.)

WEIGHT

15 lbs.

CASE PACK

12 Cans



MOLD SPECIALTIES



Aervoe's high-quality mold specialties and release agents provide a variety of choices for every imaginable molding operation.

3095 MOLD CLEANER

A solvent-based spray cleaner for general cleaning of metal molds.

- For in-place cleaning of all metal molds, or for superior clean-up prior to storage
- Removes all grease, oil, and other soils that cause molding imperfections
- Does not leave a residue, and won't interfere with molding operations

Uses: On metal molds, dies, pins, jigs, machinery, and mechanical equipment.

CAN SIZE (NET)
16-ounce Aerosol (10.5 oz.)

WEIGHT
13 lbs.

CASE PACK
12 Cans

3090 TOOL AND DIE SAVER

Protect stored tools and dies from moisture during storage. Ideal for long-term indoor storage.

- Absorbs moisture and neutralizes acid formed by corrosive atmosphere
- Easy to remove
- Delivers a greasy, elastic film that won't harden or crack with age
- Provides protection for indoor or outdoor storage

Uses: Good for chucks, set-up jigs, tools, stored metal molds and dies, and seldom-used parts.

CAN SIZE (NET)
16-ounce Aerosol (11 oz.)

WEIGHT
13 lbs.

CASE PACK
12 Cans



MOLD RELEASE

A high quality line of aerosol, silicone, non-silicone, food-grade, and paintable mold releases that are FLAMMABLE and NON-CHLORINATED. All are packaged with the Spray-Any-Way valve to accommodate application in any position.

SILICONE MOLD RELEASES

Industrial strength release agents that are economically priced and help resist costly breakdowns.

- Silicone formulas
- Heat stable at temperatures up to 500°F (260°C)
- Increases molding efficiencies
- Allows for multiple parts releases per application
- Ideal for hot or cold molding processes
- Non-staining, non-corrosive formulas
- Low toxicity

Uses: Plastic injection molders, compression molders, extruders, and foundries, blow molders, investment castings, and candle molders. Recommended for use on A.B.S. resins, acrylics, wax, rubber, polyesters, cellulose and polystyrenes.

PROD #	CAN SIZE (NET)	WEIGHT	CASE PACK
3423 Industrial Silicone 5%	20-ounce Aerosol (13 oz.)	15 lbs.	12 Cans
3445 Heavy Duty Silicone	20-ounce Aerosol (13 oz.)	15 lbs.	12 Cans

2011 FOOD GRADE SILICONE MOLD RELEASE

Food grade silicone release that is ideal for all polypropylene and polyurethane moldings, including toys, food containers, closures, etc.

- Non-staining, non-corrosive formula
- Ideal for hot or cold molds

Uses: Plastic injection molders, compression molders, extruders, and foundries, blow molders, investment castings, and candle molders. Provides excellent lubricating properties for guides, saws, conveyors, and rollers on packaging equipment.

CAN SIZE (NET)	WEIGHT	CASE PACK
16-ounce Aerosol (12 oz.)	13 lbs.	12 Cans

MOLD RELEASE COMPARISON RESULTS

Test results shown represent independent tests of mold releases by Plastics Product Review. The numbers reflect an average number of shots before part sticking occurs.

BRAND	PRODUCT	ABS	TPE	PP	ALL MATERIALS
Aerove	#3445 Heavy Duty	7.8	7.0	11.4	8.73
Brand K	Heavy Duty	7.2	6.8	11.4	8.47
Brand D	Frekote	4.4	10.0	11.8	8.73



3452 LECITHIN MOLD RELEASE

Designed for quick, clean releases on thermosets and thermoplastics.

- Will not interfere with post-finishing operations; parts can be painted, stenciled, hot stamped, glued, plated, or otherwise decorated
- Resists crazing and stress cracking
- Will not mar clear polyethylene, polystyrene, or other plastics
- Heat stable up to 500°F (260°C)

Uses: Plastic wrap cutting equipment, compression molding, gaskets and seals for tank closures, toy and furniture manufacturing, urethanes, epoxy resins, polyesters and polystyrenes.

CAN SIZE (NET)

20-ounce Aerosol (13 oz.)
Gallon Can

WEIGHT

15 lbs.
14 lbs.

CASE PACK

12 Cans
2 Gallons

3460 PAINTABLE MOLD RELEASE

Specially formulated paintable silicone fluids provide excellent release properties that are ideal for all types of plastics where decorating is required after molding.

- Odorless, non-staining, non-corrosive formula
- Heat stable up to 500°F (260°C)
- Long lasting, anti-stick film
- Allows for multiple part releases per application
- Parts can be readily decorated with all types of solvent-based paints, enamels, and lacquers
- Increases molding efficiency
- Ideal for injection molding and hot or cold molding processes
- Compatible with most moldable resins, elastomer compounds, rubber, wax, and plastic

Uses: Hot or cold molding processes for rubber, polystyrenes, polyurethane foams, plastic, metal castings and elastomeric materials.

CAN SIZE (NET)

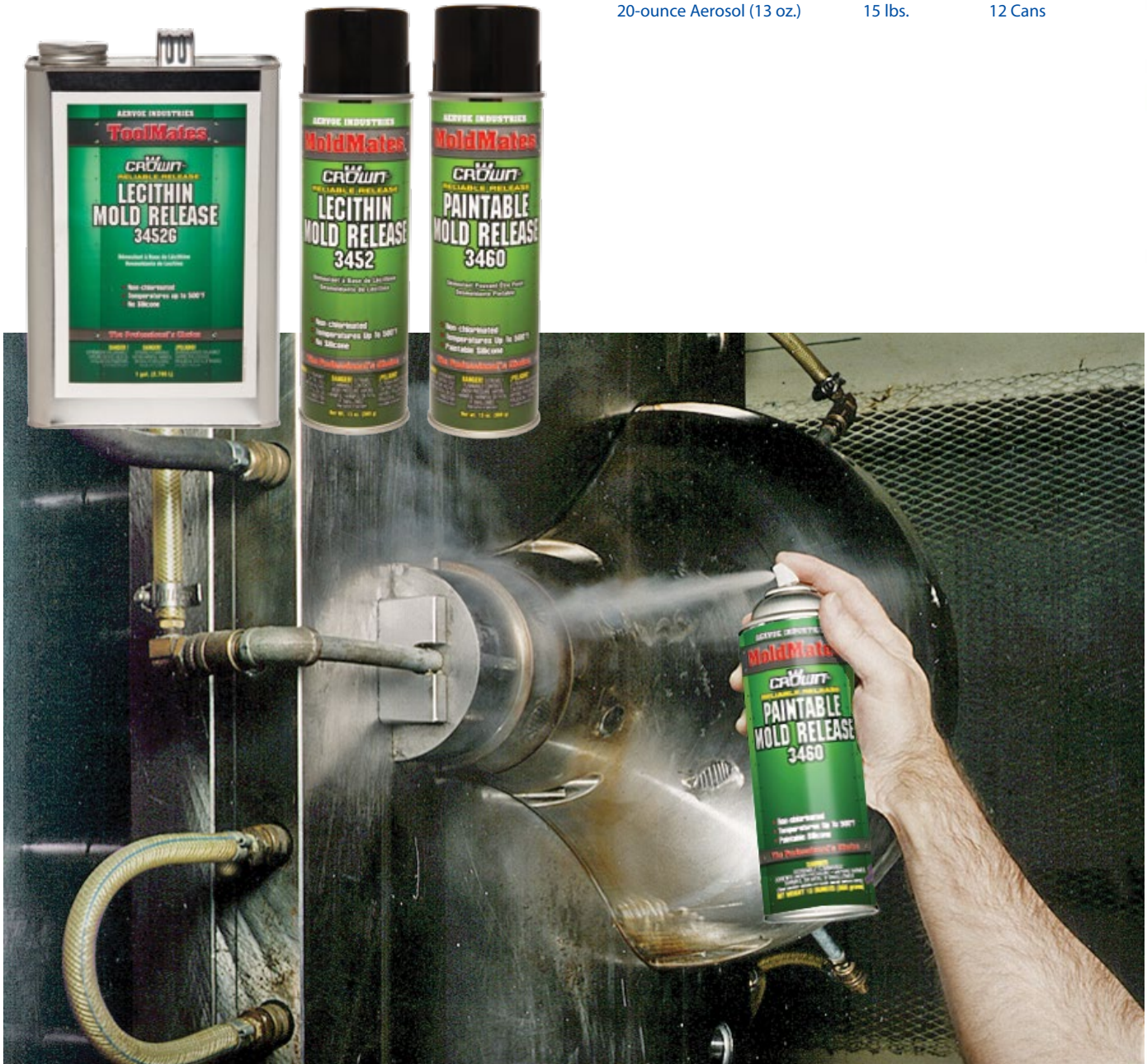
20-ounce Aerosol (13 oz.)

WEIGHT

15 lbs.

CASE PACK

12 Cans



3470 MOLD RELEASE & PROTECTOR

Wax-based mold release that eliminates part imperfections. Perfect for overnight protection - helps to eliminate flash rust caused from condensation after shut-down. Then at startup no need to remove, just shoot mold clean.

- Ideal for epoxy molding
- Ideal for manufacturers of flexible and rigid polyurethane
- Wax-based
- Overnight protection
- No silicones

Uses: Epoxy molding, polyurethane, and phenolics.

CAN SIZE (NET)

20-ounce Aerosol (13 oz.)

WEIGHT

15 lbs.

CASE PACK

12 Cans



MOLD RELEASE USER GUIDE

MOLDING MATERIALS	SILICONE 3% - 5%	DRY FILM LUBRICANT	PAINTABLE	TFE	LECITHIN	MOLD RELEASE & PROTECTOR
ABS	●		●		●	
Acetals	●	●	●		●	
Acrylic	●	●	●		●	
Epoxy				●		●
Lexan	●	●	●		●	
Melamine		●	●	●	●	
Nylon	●	●	●		●	
Nurene	●				●	
Phenolics	●	●	●	●	●	●
Polyamide	●	●	●			
Polycarbonate	●	●	●		●	
Polyester	●	●	●		●	
Polyethylene	●	●	●		●	
Polypropylene	●	●	●	●	●	
Polystyrene	●	●	●	●	●	
Polyurethane	●			●	●	●
Polyvinyl Chloride	●	●	●		●	
Post Decorating	●	●	●	●	●	
Rubber	●	●	●	●		

FLEET / UTILITY SERVICE

590 CARB & CHOKE CLEANER

Aervoe's Carb & Choke Cleaner is a fast-acting blend of solvents that maximizes carburetor performance.

- Eliminates rough idling, stalling, engine run-on, and starting hesitation
- Quick and easy to use
- Removes varnish build-up; does not leave a film or residue
- Will not harm catalytic converters or oxygen sensors
- Cleans heat risers by dissolving buildup around shaft
- Does not contain CFC's, HCFC's, or chlorinated solvents
- Includes extension tube for precision application in hard to reach areas
- Meets VOC requirements in all 50 states, including CARB

Uses: PVC valves, automatic chokes, carburetor components, crankcase breather elements, exhaust gas recycling valves (ERGs) and intake parts. Can be used in any carburetor or fuel injected gasoline engine.



CAN SIZE (NET)
16-ounce Aerosol (12 oz.)

WEIGHT
14 lbs.

CASE PACK
12 Cans



591 LOW VOC BRAKE & PARTS CLEANER <10% VOC

592 BRAKE & PARTS CLEANER <20% VOC

This non-corrosive degreaser is effective in removing oil, grease, wax, dirt, and moisture from brake drums, linings, and pads. Low VOC version meets the stringent California VOC and SCAQMD Requirements (592 is not available in California).

- Non-chlorinated
- Dries in less than 2 minutes
- High-pressure action and unique wetting properties degreases and penetrates inaccessible areas
- Includes extension tube for precision application
- Stops annoying brake squeal
- Reduces airborne asbestos dust
- Keeps brake shoe pads at top level of performance
- Does not contain CFCs, HCFCs, or chlorinated solvents

Uses: Drum and disk-type brakes. Can also be used for cleaning chains, gears, bearings, clutches, U-joints, and other areas where grease and oil have accumulated.

CAN SIZE (NET)
20-ounce Aerosol (14 oz.)
Gallon Can
5-Gallon Pail
55-Gallon Drum (50 gal.)

WEIGHT
16 lbs.
16 lbs.
66 lbs.
611 lbs.

CASE PACK
12 Cans
2 Gallons
1 Pail
1 Drum



8079 DRIVE BELT DRESSING

Prevents belt slippage and glazing for better motor efficiency and longer belt life.

- Restores suppleness and flexibility to belts
- Increases pulling power up to 50%
- Reduces squeaks and slippage by aiding in traction
- Effective on all types of belts, new and used; rubber, canvas, leather, and fabric
- Will not glaze or collect dirt or dust

Uses: Industrial belt drives including generators and fans; flat, round, or V-style belts, auto fans, water pumps, transmission, power steering, farm machinery, appliances, air conditioners, equipment, and power tool belts.

CAN SIZE (NET)	WEIGHT	CASE PACK
16-ounce Aerosol (12 oz.)	13 lbs.	12 Cans
Quart Can	37 lbs.	12 Quarts



595 UNDERCOATING AND SOUND INSULATOR

Aerove's Undercoating & Sound Insulator is a quick-drying, rubberized film designed to offer maximum coverage and superior insulation properties against road and chassis noise.

- Tough, flexible coating
- Superior protection against rust, road salt, mild alkali and acids, dust, fumes, and moisture
- Deadens sound
- Coating remains flexible; will not flake or chip off under vibration
- Not available for sale in the state of California

Uses: Auto underbodies, trunks, fender and body seams, rust holes, weld joints, gas tanks, fenders, rocker panels, door panels. Can also be used to seal rain gutters, coat tree wounds, for minor roof repairs, driveway cracks, and swamp and tower cooler coatings.

CAN SIZE (NET)	WEIGHT	CASE PACK
20-ounce Aerosol (15 oz.)	16 lbs.	12 Cans

FLEET / UTILITY USER GUIDE

AERVOE PRODUCT	BASE MATERIALS	FLASH POINT	KB VALUE	EVAPORATION RATE	APPEARANCE	ODOR
590 Carb and Choke Cleaner	Acetone, Heptanes	<0°F	Not evaluated	Not evaluated	Thin, non-foaming	Moderate
591 Low VOC Brake and Parts Cleaner	Petroleum Naphtha, Acetone	-4°F	Not evaluated	Not evaluated	Thin, non-foaming	Mild
592 Brake and Parts Cleaner	Petroleum Naphtha, Acetone	-4°F	95	6.5	Clear, non-foaming	Mild

NON-DESTRUCTIVE TEST INSPECTION SYSTEMS

Crown die penetrant inspection system quickly locates cracks and defects in metals, glass, and plastics. Ideal for NDT testing in the fields of welding, automotive (manufacturing and repair), aircraft, airlines, railroads, government, oil drilling, foundry, fastener, construction machinery, etc.

3-STEP CLEANER, PENETRANT, AND DEVELOPER PROCESS. SOLD INDIVIDUALLY OR AS A KIT.

#1070 FAULT-FINDER KIT (GROUP 1)

1. Cleaner #1071 (contains 4)
2. Penetrant #1072 (contains 2)
3. Developer #1073 (contains 2)

Does not contain chlorine or sulfur-bearing solvents. Group 1 was developed specifically for test materials where halogenated safety solvents are not permitted.

This system meets RDT F-3-6T standard as established by the Atomic Energy Commission. Conforms to MIL-I-25135. Active ingredients meet chlorine and sulfur requirements of RDT F-3-6T Standard, NAVSHIPS 250-1500 and MIL STD 271.

PROD # / CAN SIZE (NET)	WEIGHT	CASE PACK
1070 Fault-Finder Kit	9 lbs.	1 Kit (8 Cans)
1071 Cleaner 12-oz Aerosol (7.5 oz.)	10 lbs.	12 Cans
1072 Penetrant 12-oz Aerosol (8.5 oz.)	11 lbs.	12 Cans
1073 Developer 12-oz Aerosol (7.5 oz.)	10 lbs.	12 Cans



Fault Finder Kit (Group 1) - #1070



1. Spray on Cleaner and wipe off

2. Spray on Penetrant and allow time to set.

3. Wipe excess Penetrant from surface with Cleaner.

4. Spray on thin layer of white Developer.

5. Visual inspection. Red cracks and other faults will appear in white developer area.

ADHESIVES

8177 INDUSTRIAL ADHESIVE

Provides holding power on most surfaces, rough or smooth.

- Fast drying, just spray and stick
- California VOC-compliant
- Repositionable - flexible
- Best for non-porous surfaces
- Conical mist spray pattern
- Colorless
- Ideal replacement for 3M™ Super 77™ Adhesive

Uses: Ideal for light production work, especially the temporary pinning alignment of parts for final assembly. Adheres to paper, cardboard, wood, or metals.

CAN SIZE (NET)
20-ounce Aerosol (14 oz.)

WEIGHT
15 lbs.

CASE PACK
12 Cans



8190 HI-STRENGTH ADHESIVE

This high-strength, industrial grade adhesive is ideal for extra-strong bonding of materials to a variety of surfaces.

- California VOC-compliant
- Low soak-in
- Best for porous surfaces
- Extremely fast dry time: 1-minute to tack
- Web fan spray
- Withstands temperatures up to 130°F (54°C)
- Flexible and waterproof
- High shear and peel strength
- Ideal replacement for 3M™ Hi-Strength 90 Adhesive

Uses: For bonding insulation, hard plastic, wood, metal, fabric, and paper.

CAN SIZE (NET)
20-ounce Aerosol (12 oz.)

WEIGHT
14 lbs.

CASE PACK
12 Cans

8178 EPS FOAM/CONCRETE ADHESIVE

Aervoe's unique pressure sensitive, upside down spray adhesive provides fast tacking and extra-strong bonding or laminating of expanded polystyrene (EPS).

- Product is flexible for adhesion to smooth or rough substrates
- Quick set up allows for faster construction times
- Binds both porous and nonporous surfaces
- Will not damage EPS
- Provides temporary light-duty performance or permanent bonds in heavy-duty applications
- Resistant to UV, heat, and water damage
- Stain free, mild odor formulation
- Ideal replacement for 3M™ Insulation & Polystyrene Adhesive

Uses: Can be used throughout general industry and construction for bonding EPS to concrete and other surfaces.

CAN SIZE (NET)
20-ounce Aerosol (14 oz.)

WEIGHT
15 lbs.

CASE PACK
12 Cans



SHIPPING ESSENTIALS

AerVOE Shipping Essentials® were designed for ease of use in small and medium size shipping/receiving operations. Fast-drying, highly opaque Stencil and Cover-Up Inks and two industrial grade adhesives meet the requirements of the most demanding users.

STENCIL INKS AND COVER-UP INKS

AerVOE Stencil and Cover-Up Inks are fast-drying, highly opaque coatings for use where product coding, stenciling, color coding, applying instructional information or covering over old markings is required.

- Dry to touch in 3 minutes; allows for fast handling in production lines
- Complete coverage in one application
- Will not smear or smudge
- Hot or cold applications
- Waterproof and weather resistant
- Provides excellent outdoor color retention
- Can be applied to virtually any porous or non-porous surface
- Matched to Fed Std. 595 colors
- Meets MIL-A-A-208A

Uses: Corrugated boxes, cartons, paper, fabrics, wood, plastics, stone, concrete, asphalt, metals, glass, masonry, wood crates, steel coils, fiber or steel drums, and lumber.

CAN SIZE (NET)

16-ounce Aerosol (12 oz.)

WEIGHT

14 lbs.

CASE PACK

12 Cans

COLOR SELECTION

Stencil Inks

- 2801 Red
- 2802 Yellow
- 2805 Orange
- 2806 Black
- 2807 White

Cover-Up Ink

- 2811 Tan



MISCELLANEOUS

863 JET FORCE WASP AND HORNET KILLER

Use this fast-acting, powerful aerosol spray to saturate nests instantly and eliminate hornets, wasps, and yellow jackets from inside (attics and other areas where nests are built) and outdoors.

- Sprays up to 20 feet; pinpoint stream reaches dense and hard to reach cracks and crevices
- High-delivery valve for complete saturation
- High percentage of active ingredient ensures the best knockdown and kill rate
- High dielectric strength of 41kV/mm
- EPA Reg.No. 706-109-27417
- Lasting residual deposit prevents reinfestation for weeks
- Not available for sale in Canada
- Approved for sale in California

Uses: Ideal on utility meters and boxes, outside surfaces of screens, doors and window frames, nesting areas in shrubs and bushes, telephone poles and eaves. Also for use at golf courses, picnic grounds, beaches, warehouses, and storage areas where food is not exposed.

CAN SIZE (NET)

20-oz Aerosol (14 oz.)

WEIGHT

15 lbs.

CASE PACK

12 Cans



HAND SANITIZER

Fast-acting instant hand sanitizer for use when hand washing is not possible. Two formulas to choose from: Isopropyl Alcohol or Ethyl Alcohol fortified with Aloe and Vitamin E. Both leave hands soft, even with all day application.

- 75% Active ingredient
- Kills 99% of illness-causing germs
- Non-sticky formula
- Does not contain methanol or 1-propanol

Uses: Office, home, or on a job site.

CAN SIZE (NET)

5030 16-oz Bottle

5031 2-oz Bottle

5032 8-oz Bottle

WEIGHT

7 lbs.

3 lbs.

8 lbs.

CASE PACK

6 Bottles

12 Bottle

12 Bottles

5062 ANTI-VANDAL SPRAY

A clear spray blend of solvents that removes lipstick, pencil, ink, crayon, and spray paint from a variety of hard surfaces.

- Ideal for public areas prone to graffiti abuse
- Removes stubborn marks from road signs, washrooms, buildings, sidewalks, underpasses, and a variety of other surfaces
- Safe for use on most hard, unpainted surfaces, including concrete, brick, wood, fiberglass, ceramic tile, Formica, and some plastics
- Eliminates the need to sandblast and grind marks off concrete and brick surfaces

Uses: For use on tile, brick, aluminum, steel, granite, marble, Formica, and dozens of other hard surfaces. Ideal for removing unwanted marks from road signs, metal panels, washrooms, public buildings, sidewalks, underpasses, school locker rooms, transit system buildings and vehicles, and rail cars.

CAN SIZE (NET) 16-ounce Aerosol (14 oz.)	WEIGHT 15 lbs.	CASE PACK 12 Cans
--	--------------------------	-----------------------------



5205 WATER-WORKS! COATINGS REMOVER

Crown Waterworks Coatings Remover has a unique ability to utilize the physical energy released by chemical reactions to break the bond between the coating and the substrate, which lifts the paint off in large pieces and allows it to be washed away with water, scraper or stiff bristle brush.

- Water-based paint and varnish remover
- Easy clean-up
- Works on most paints
- Easy on the environment

Uses: Effectively removes paint from steel, aluminum, and other alloys, wood, masonry, and a variety of other substrates. Performs effectively on polyurethane, urethane, epoxy, lacquer, varnish, alkyds, and latex paints.

CAN SIZE (NET) 20-ounce Aerosol (14 oz.)	WEIGHT 16 lbs.	CASE PACK 12 Cans
--	--------------------------	-----------------------------



Sprā-tool® SPRAYTOOL

Provides fast, professional results. The Sprā-tool® operates on the same principle as commercial spray guns without the bulky equipment. Its unique design will atomize nearly any liquid, including latex paint. Fast action trigger maintains constant pressure for a smooth, professional-looking finish.

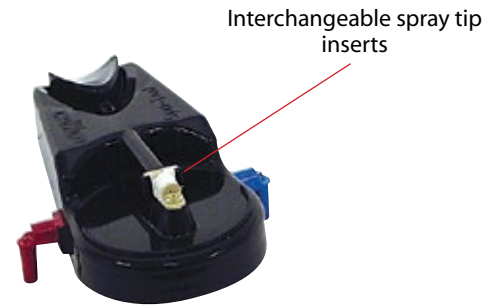
APPLICATIONS

- Homeowners can purchase any color latex paint and use the Sprā-tool® at home
- Contractors and maintenance workers needing the perfect touch up tool can purchase custom colors and use on the job site
- Perfect for stain or varnish projects



TIP CHOICES

- Red - high delivery
- White - regular delivery
- Blue - fine mist



Sprā-tool® Snap-on Head #8213
(extra insert spray tips n/c)

- No wires, hoses, batteries, or bulky compressors
- Interchangeable spray tip inserts
- Sprays most liquids, including higher-viscosity paints such as latex (thin 50% for proper operation)
- Ideal for fast drying, short-life epoxies
- Controlled spray pattern provides even coverage
- Convenient size with resealable poly jar
- Safe to transport
- Fast clean-up, no brushes, rollers, or pans

Uses: Cover scratches and paint blemishes on pickups, forklifts, antique cars, buses, bikes, boats, walls, trim, doors, etc. A quick and easy way to refinish shutters, decks, outdoor furniture, flag poles, craft items, etc. Can also be used to apply insecticides to protect plants from insects and diseases.



Fill with desired liquid



Sprā-tool® Power Pack #8211



Sprā-tool® Jar with cap #8212

PROD #	DESCRIPTION	WEIGHT	CASE PACK
8209	Sprā-tool® Kit	7 lbs.	6 Sets
8211	Sprā-tool® Power Pack 12-oz. (6.5-oz. net)	9 lbs.	12 Cans
8212	Sprā-tool® Jar with Cap	2 lbs.	12 Sets
8213	Sprā-tool® Snap-on Head and Tips	1 lb.	1 Head

2350 POWER CAULK & ADHESIVE GUN

Eliminates hand and forearm fatigue! No need to manually squeeze a caulking applicator when using this rechargeable gun. Uses any standard 10 oz. caulk, sealant or adhesive tube.

- 1000 lbs. of push force to move different viscosity materials
- Auto reverse relieves pressure to eliminate drips
- Variable speed trigger
- Adjustable flow rate
- Dispenses 100 tubes on a full battery
- 360 rotating collar
- Trigger lock
- LED light
- Wrist strap
- Rechargeable 7.2V li-ion battery

Includes: Plastic carrying case, 7.2V li-ion battery pack, 120V AC charging adapter and applicator.

Uses: adhesives, silicone, latex, all purpose caulk, roofing sealant, asphalt, concrete, butyl rubber, etc.



PROD # / DESCRIPTION	WEIGHT	CASE PACK
2350 Power Caulk & Adhesive Gun	12 lbs.	1
2351 Replacement Battery Pack	1	1
2352 Replacement Charger	1	1



241 TRIGGER SPRAY GUN

Easily transform your aerosol cans into a spray gun by sliding the Aervoe Trigger Spray Gun onto the can rim.

- Ergonomic
- Easy to use with gloves
- Eliminates finger fatigue
- Easy to clean, and reusable

Uses: With any standard can of spray paint, varnish, primers, cleaners, lubricants, and insecticides.

WEIGHT	CASE PACK
2 lbs.	12 Handles



2310 ADJUSTABLE HAND SPRAYER

- Easy trigger spray
- Sprays in any direction
- Graduated 22-ounce bottle
- For non-paint sprayable products

WEIGHT	CASE PACK
2 lbs.	6 Bottles

OTHER AERVOE PRODUCT MARKETS

Look for other Aervoe catalogs featuring Safety, Traffic Control, Outdoor Products, and Portable Appliances.

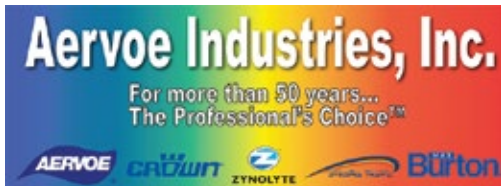
- Portable gourmet and gas appliances under the Max Burton® name
- Emergency/safety related products for business and industry under the Aervoe name
- Many made in the USA!



All products may be purchased on one purchase order, and shipped and billed together on one Aervoe order.



MERCHANDISING



An array of merchandising aids are available to assist in selling all AerVOE products — headers, color charts, shelf displays, counter and floor racks. Contact Customer Service for literature, point of sale materials, our free rack program, and other promotional items.

HEADERS

Colorful headers are available to use on free-standing displays, Lozier shelving, and gondolas. Compact and versatile, these eye-catching signs become instant traffic boosters.

PROD #	DESCRIPTION	SIZE	CASE PACK
1792AR	Counter Footer Card	17.125" x 2.75"	1 Footer
1794AR	Plastic Display Header Card	22.437" x 9"	1 Header

PLASTIC DISPLAY RACK

A 4-shelf plastic display rack holds 48 aerosol cans per shelf. Accommodates 16 or 20 oz. cans, quarts or gallon-sized products. Includes header assembly, header graphic sold separately. Dimensions 21.125" x 25.845" x 70"

PROD #	DESCRIPTION	WEIGHT	CASE PACK
8703	Plastic Display Rack	24 lbs.	1 Rack

COLOR CARDS

AerVOE Industries color cards are printed using the latest in computer color matching technology that provides the most accurate color match available with current printing processes.

COUNTER RACK

Convenient 3-shelf rack holds 18 cans of aerosol products. Dimensions: 17.25" x 9.75" x 14"

PROD #	DESCRIPTION	WEIGHT	CASE PACK
8702	Counter Rack	6 lbs.	1 Rack

ACCESSORIES

RAIL FRONTS & RAIL DIVIDERS

Use to keep cans in a straight line on any standard shelf. The 12" long rail dividers clip onto the 47.25" long rail front.

PROD #	DESCRIPTION	WEIGHT	CASE PACK
8705	47.25" Rail Fronts	5 lbs.	25 Pack
8706	12" Rail Dividers	3 lbs.	100 Pack

TRADE REFERENCES

TRADE & TECHNICAL REFERENCES

This reference section is provided to assist in choosing the correct color for your job site application; and, to define industry standards that will assist in product selection and regulatory understanding.

A.S.A. — American Standards Association. Of particular interest in setting the color standard reference for electrical industry equipment.

ANSI — American National Standards Institute - A published guide for product color matching standards for O.S.H.A., APWA, traffic, and striping paint products.

Aromatic Solvents — Solvents with strong evaporation odor and whose main chemical structure is the benzene ring. Toluene, xylene, ethyl benzene, and others are of this type. While they do not have the extreme adverse health affects of benzene, there are more and more studies showing them to pose significant health risks. They are also in a group of the most reactive air pollutant organic compounds.

Atomize — To divide a liquid into extremely minute particles, either by impact with a jet stream of compressed gas, or by passage through a mechanical device (spraytip).

Biodegradable — Capable of being decomposed by bacteria or other living organisms.

California Proposition 65 — A California State Act: "Safe Drinking Water and Toxic Enforcement Act" effective in 1987 that requires special labeling of products deemed by that state to cause cancer or reproductive toxicity. Not consistent with any Federal Hazardous Substance labeling requirements, sets no action levels for any ingredients, but refers to trace elements.

CARB — California Air Resources Board

Category A-1 — NSF-A1 For use as a general cleaner on all surfaces in and around food processing areas, where its use is not intended for direct food contact.

Category H-1 — Acceptable as a lubricant with incidental food contact for use in official establishments operating under the Federal Meat and Poultry Products Inspection Program. Such products may be used on food processing equipment as a protective anti-rust film, as a release agent on gaskets or seals of tank closures, and as a lubricant for machine parts and equipment in locations in which there is potential exposure of the lubricated part to food.

C.A.S. Number — Chemical Abstract Service number is used to identify a chemical ingredient. The service is an organization which indexes information published in Chemical Abstracts by the American Chemical Society, and provides index guides by which information about a particular substance may be located.

CFCs — Chlorofluorocarbons are a family of inert, non-toxic, and easily liquefied chemicals used in refrigeration, air-conditioning, or prior to 1976, as a solvent and aerosol propellant. Because CFCs are inert and not destroyed in the lower atmosphere, they drift into the upper atmosphere where their chlorine components destroy ozone. Aervoe products contain no CFCs.

Chlorinated Solvents — Volatile liquids containing one or more chlorine atoms in their structure. Widely used in cleaning applications where non-flammability and rapid

evaporation rate is required. Exempt for many years from VOC regulations, and widely used because they are non-flammable.

Corrosive — A chemical agent that reacts with the surface of a material, causing it to deteriorate or wear away.

CPSC — Consumer Product Safety Commission

Dielectric Properties — The measurement of a material's ability to insulate (or not conduct) electricity; in other words, a measure of the ability of the material to maintain a difference in electrical charge over a specific distance.

Evaporation — The process of a solvent or liquefied gas dissipating in a vapor or invisible minute particles.

FDA — Food and Drug Administration

Federal 595 Color Standards — A wide range of color chips for a matching reference system in world-wide uniform color matching.

Flame Propagation (F.P.) Flammability Test — Test method used to determine flammability rating as expressed on the front panel of an aerosol can label. The test involves spraying product through a candle flame and measuring the distance of the flame extension and observing for flash-back to the sprayhead.

Flammability — How easily something will burn or ignite, causing fire or combustion. OSHA defines flammable liquids as having a flashpoint below 100°F. Extremely Flammable is defined by a flash point below 20°F.

Flash Point — The minimum temperature at which a liquid gives off sufficient vapors to form, with air, an ignitable mixture.

FTC — Federal Trade Commission

GHS - Global Harmonized System — Includes criteria for the classification of health, physical, and environmental hazards, as well as specifying what information should be included on labels of hazardous chemicals as well as Safety Data Sheets.

Greenhouse Effect — The warming of the earth's atmosphere caused by a build-up of carbon dioxide or other trace gases. This allows the sun's rays to heat the earth, but prevent a counter-balancing loss of heat.

IATA — International Air Transport Association provides procedures for the shipper and the operator by which articles and substances with hazardous properties can be safely transported by air on a commercial air transport.

IMDG Code — International Maritime Dangerous Goods Code is a detailed international regulation for shipments of marine pollutants as ocean cargo. Their classification and storage location requirements are designed to prevent harm to the marine environment.

KB Value — A measure of the solvent power for a hydrocarbon solvent, and is governed by an ASTM standardized test, ASTM D1133.

Lead Content — Many orange, yellow, and red paint products today still use inorganic pigments which contain heavy metals such as lead, chromium and cadmium. Organic replacement pigments can be used to provide the identical colors, but require more pigment, resulting in higher cost. Aervoe products contain no lead.



Liquefied Propellants vs. Compressed Gases — Most common liquefied propellants are dimethyl ether, butane, isobutane, and propane (hydrocarbons), or blends of the four.


They have very low boiling points, and exit as a gas at ambient temperatures and atmospheric pressure. Under pressure as in an aerosol container, they are liquids, and are intimately mixed with the other ingredients of the formulation. As the product is dispensed from the container, the pressure drops and the liquefied propellant boils, causing atomization of the product. In contrast, compressed gases such as carbon dioxide, nitrogen, air, and nitrous oxide do not liquefy at the pressure inside the container. They mix only very slightly with the other components of the formula. Compressed gases deliver product by acting as a piston to push product to the aerosol sprayhead.

MIR — Maximum Incremental Reactivity. Developed for use by the California Air Resources Board (CARB) for various regulatory applications. Currently used in conjunction with VOC (Volatile Organic Compounds).

NFPA-30B — National Fire Prevention Association 1991 standard. NFPA 30B is a standard for the manufacture and storage of aerosol products. The standard establishes classification for levels of aerosols. The levels are I, II, and III, each classified by the percentage of flammable material in them, Level I having the least amount and Level III having the greatest amount.

Net Weight vs. Fluid Ounces — Net weight expressed in ounces or grams is the weight of the contents of the package. Fluid ounces is the volume of liquid content of the package. By example, a gallon of water weighs more than a gallon of gasoline, but fills the same volume of space. For aerosol cans, the required measurement of the ingredients is by net weight.

Non-Ferrous Metal — Metals that contain no iron.

 **NSF Authorized** — National Sanitation Foundation. When noted, Aervoe coatings, lubricants, cleaners and corrosion protection products have been formulated to be accepted for use under the Federal Meat and Poultry Inspection Program by the NSF. The final granting of authorization for the proposed use of any such compound is the responsibility of the inspector in charge of the official facility.


ORM-D — A material such as a Consumer Commodity which, although otherwise subject to the regulations of 49 CFR 172.101, presents a limited hazard during transportation due to its form, quantity, and packaging. For a product to meet the ORM-D classification it must meet the Consumer Commodity and limited quantity definitions. Aerosol containers under twenty-eight fluid ounces are classified as ORM-D.

OTC States — Ozone Transport Commission. A multi-state organization created under the Clean Air Act (CAA). Responsible for advising EPA on transport issues and for developing and implementing regional solutions to the ground-level ozone problem in the Northeast and Mid-Atlantic regions.

Ozone Depleting Substance (ODS) — Identified Class I and II chemicals per the Clean Air Act Amendments of 1990 which must contain warning notices on the product label as of May, 1993. These are volatile chemicals containing chlorine atoms in their structure and must be stated “to be harmful to public health and the environment.”

pH — A measure of the acidity or alkalinity of a solution.

PSI — Pounds per square inch.

Steel Can Recycling Logo — Can recycling symbol to encourage the recycling of all containers made from steel, including aerosols. Aervoe Industries Incorporated  has actively supported steel can recycling for more than 20 years.

REACH — Registration, Evaluation, Authorization and Restriction of Chemicals. Adopted by the European union on December 18, 2006 to improve the protection of human health and the environment while maintaining the competitiveness and enhancing the innovative capability of the EU chemicals industry. The Consumer Products Safety and Quality (CPS&Q), formerly known as the European Chemicals Bureau (ECB) was responsible for developing methodologies, tools and technical guidance needed for implementation.

SCAQMD — South Coast Air Quality Management District.

S.D.S. — Safety Data Sheets required by O.S.H.A. for worker right-to-know regulations describing the product's hazardous ingredients, and safety precautions associated with its use.

TAC — Toxic Air Contaminants

Tag Closed Cup (TCC) Flammability Standard — Also known as Tag Closed Test (TCT), is one of several types of apparatus for determining flash points. This test is intended for use with liquids having a viscosity less than 45 SUS (Saybolt Universal Seconds) at 100°F (38°C), and a flash point below 200°F (93°C).

Viscosity — A measure of the resistance of a fluid, which is being deformed by either shear stress or tensile stress.

VOC — Volatile Organic Compounds are organic chemical compounds whose composition makes it possible for them to evaporate under normal indoor atmospheric conditions of temperature and pressure.

Water-based vs. Water-added — True water-based aerosols are propelled with dimethyl ether, and contain water, which is working as a vital component of the solvent system. Water-added products are solvent-based products to which a surfactant and water has been added. The presence of added water has only a slight effect

CUSTOMER SUPPORT SERVICES

CONTACT INFORMATION

Toll Free Voice: 1-800-227-0196
Toll Free Fax: 1-800-921-0065
Phone: 1-775-783-3100
Fax: 1-775-782-5687
E-mail: mailbox@aervoe.com
Website: www.aervoe.com

PRODUCT DATA SHEETS

Industrial technical data sheets are available to help answer product questions. They list specific product information about usage, features, and compliance, and assist in explaining the Aervoe Advantage. Copies available online at www.aervoe.com, or by calling Customer Service toll free at 1-800-227-0196.

SAFETY DATA SHEETS

SDS are included in **every case** of Aervoe Industries product that's shipped out. Copies are also available online at www.aervoe.com in both U.S. and Canadian format.

ELECTRONIC DATA INTERCHANGE (EDI)

Aervoe is set up for direct electronic exchange of orders, shipping information, and invoicing. To find out more about our EDI capabilities, contact Customer Service at the toll free voice number listed above.

WAREHOUSE

Orders are shipped from our distribution center in Gardnerville, Nevada.

FIELD SALES ASSISTANCE

Aervoe employs factory-direct Field Sales Associates to assist in the selling effort.

QUALITY CONTROL

We are committed to continuous improvement of our Quality Management System which reflects our start in this industry

50 years ago as the major G.S.A. aerosol contractor for military specification lacquers and enamels.

E-COMMERCE

Aervoe is online with a fully operational storefront. Visit our web site 24 hours a day, 7 days a week to download important product information, see new product introductions and promotions, or place your orders at www.aervoe.com.

INTERNATIONAL CONSIDERATIONS

It is a corporate goal to increase our presence in Mexico and Latin America, as well as Eastern Canada, and to that end Aervoe is working hard to provide SDS in Canadian English and French. We are also adding French and Spanish labeling to all products. This effort will continue to expand as our international influence expands.

TECHNICAL ASSISTANCE

Technical assistance or specific product questions are handled by our Product Managers who specialize in both paint and non-paint products. Special requests can be faxed to our toll-free fax number at 1-800-921-0065. Orders can be called in to Customer Service at 1-800-227-0196, faxed to 1-800-921-0065, or placed online at www.aervoe.com.

AERVOE PRODUCT CATEGORIES

See Aervoe's other product catalogs for Safety, Traffic Control, Outdoor Products, and Portable Appliances.

www.aervoe.com



Construction/Industrial Supply Distribution Network





AerVOE Industries, Inc.

1100 Mark Circle, Gardnerville, NV 89410
(775) 783-3100 • Fax (775) 782-5687
Customer Service (800) 227-0196 • Fax (800) 921-0065
www.aerVOE.com • mailbox@aerVOE.com

Represented by: Williams Industrial Sales Company

For More Than 50 Years... The Professional's Choice

Distributed By: